

Diseases of bladder and prostate

Price inquiry: +48 605999769, kontakt@openmedis.pl

Product code: MA01088



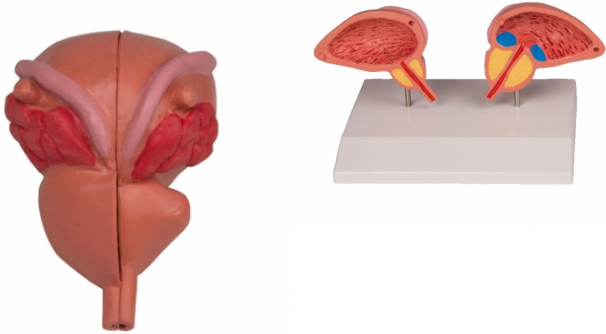
This life-size model is sectioned along the frontal plane and shows, five different pathologies of the male urinary bladder in the typical location: cystitis, bladder stones, benign prostatic hypertrophy (BPH), diverticulum, as well as bladder tumour at three different stages. Mounted on stand.

Size: 12 x 10 x 16 cm, weight: 0.2 kg

Prostate Model, 2-part

Price inquiry: +48 605999769, kontakt@openmedis.pl

Product code: MA01089



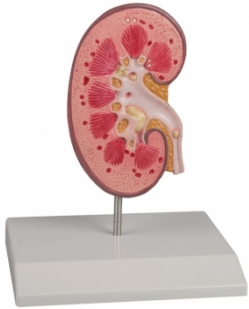
This model shows very impressively the changes of the prostate caused by BPH. One side of the model shows a healthy prostate with bladder and the other half has a diseased prostate with narrowing of the urethra and residual urine. On removable stand.

Size: 20 x 9 x 13 cm

Kidney Stone Model

Price inquiry: +48 605999769, kontakt@openmedis.pl

Product code: MA01085



This model is designed to inform patients about urinary stones (urolithiasis) and kidney stones (nephrolithiasis). A right kidney in natural size is opened to show the internal structures. The renal pelvis, the renal calices and the ureter are opened to show concretions and stones in the following locations which are typical:

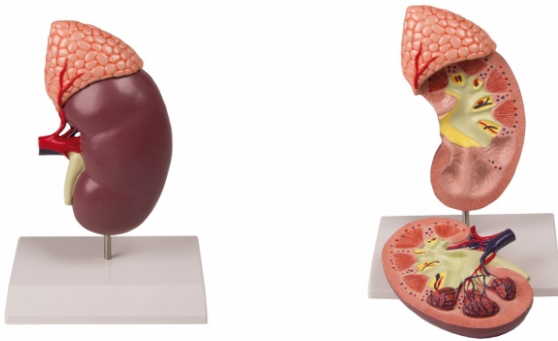
- origin of the upper calix group
- connecting tubule of the lower calyx group, resulting in congestion of the minor calices
- renal cortex
- ureter
- renal pyramids

Mounted on base.

Kidney with Adrenal Gland, 2 times enlarged, 2-part

Price inquiry: +48 605999769, kontakt@openmedis.pl

Product code: MA00933



This 2-part model shows the human kidney in about double life size. It shows internal structures including cortex, medulla, pyramids, calyces, renal pelvis, ureter and origins of the renal artery and vein. The front of the model is removable for inner examination. Mounted on stand.

Size: 19 x 12 x 7 cm, weight: 0.4 kg

Kidney model

Price inquiry: +48 605999769, kontakt@openmedis.pl

Product code: MA00932



This model of a human kidney in almost life size shows hand painted details of renal pelvis, renal medulla, renal calyx, renal cortex, renal artery and vein, ureter and adrenal gland. With educational card and stand.

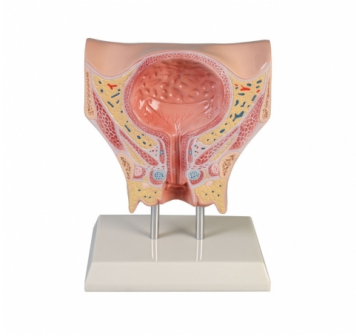
Size: 10 x 6 x 4 cm

Weight: 0.2 kg

Female bladder

Price inquiry: +48 605999769, kontakt@openmedis.pl

Product code: MA01087

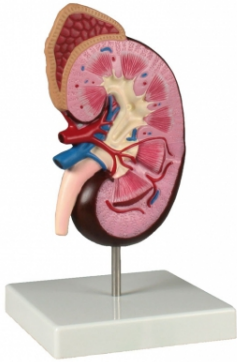


This model of a female bladder in about life size shows all anatomical structures as cross section. Bladder, urethra and sphincter are clearly visible. Perfect as patient education tool for pelvic floor training. Size: 16 x 15 x 4 cm, weight: 0.6 kg

Kidney model, 2 times life size

Price inquiry: +48 605999769, kontakt@openmedis.pl

Product code: MA01546

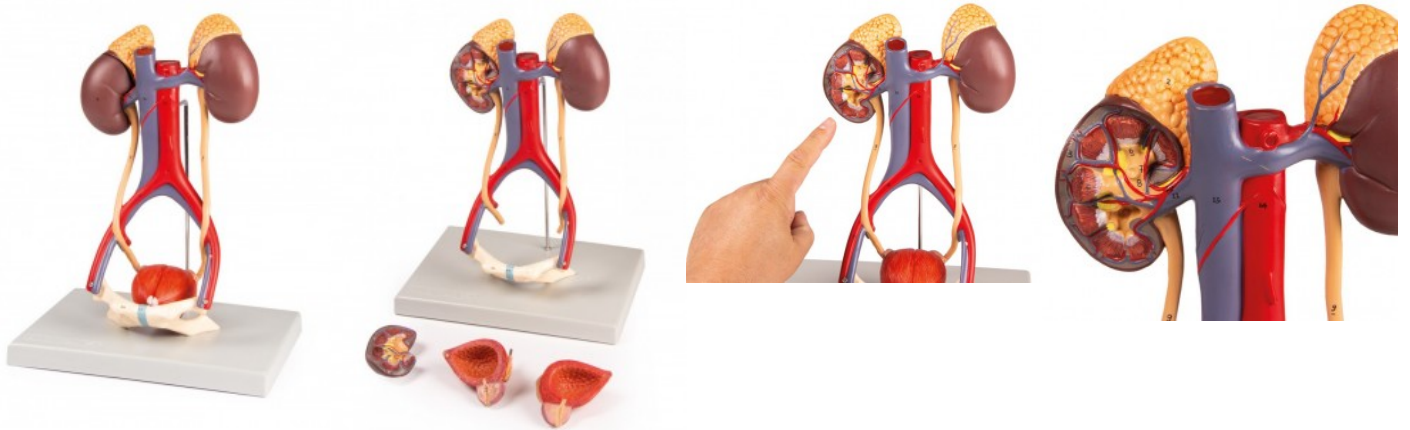


This model of a human kidney in about 2 times life size shows hand painted details of renal pelvis, renal medulla, renal calyx, renal cortex, renal artery and vein, ureter and adrenal gland. With educational card and stand.
Size: 16 x 10 x 5 cm, weight: 0.3 kg

Model of the urinary system

Price inquiry: +48 605999769, kontakt@openmedis.pl

Product code: MA02589



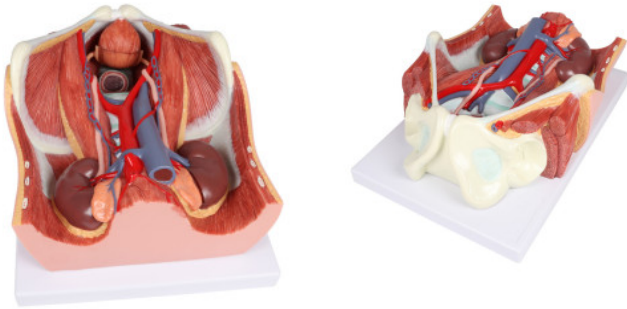
This 5 piece life-size model shows the most important components of the urinary tract, as well as the vena cava and abdominal aorta. The right kidney is open and shows the renal cortex, the renal medulla, the pyramids, the calyces, the renal pelvis, and the accesses of the renal vessels. The bladder can be opened. In the center are the mucosa, bladder triangle, urethra, seminal vesicles, ejaculation duct and vas deferens.

Dimensions: 24.5 x 18 x 36 cm, **weight:** 0.7 kg

Urinary system, dual sex, 6-part

Price: 343.17 EUR + shipping cost

Product code: MA04007



This dual-sex Urinary System all-in-one model provides a comprehensive view of the urinary system, highlighting the structures of the retroperitoneal cavity, the large and small pelvis with bones and muscles, the inferior vena cava, the aorta with its branches, including the iliac vessels, the upper urinary tract, the rectum, and the kidney with the adrenal gland. Notably, one front half of a kidney is removable for detailed examination. With interchangeable male and female inserts (bladder and prostate for males, bladder, womb, and ovaries for females), this anatomical model serves as an invaluable teaching tool, making it an ideal resource for educational purposes. The model is conveniently mounted on a baseboard for easy display and study.

Kidney, Nephron and Glomerulus

Price inquiry: +48 605999769, kontakt@openmedis.pl

Product code: MA08012



This 3 models set shows the basic structure of the kidney. We can find as a first model a frontal section of the kidney, enlarged 3 times, illustrates adrenal gland, cortex, medulla, pyramids with papillae, renal pelvis and blood vessels. The second model, representing a nephron enlarged 120 times, shows renal tubules, a collecting tube system and Henle's loop. The third one illustrates Malpighian corpuscle with the Bowman's capsule, 700 times life size. All these models are a great instrument to understand the kidney anatomy in all the inner details. The three models are mounted on board.

Size: 70 x 29 x 12 cm

Weight: 4.1 kg