

Eyeball with Orbit and eyelid

Price inquiry: +48 605999769, kontakt@openmedis.pl

Product code: AM07947



This 13-part model, enlarged approximately 2,5x life-size, shows the anatomy of the human eye.

The orbit can be opened into 3 parts to reveal the internal structures:

- eyelid with lacrimal gland and duct
- muscles (4 parts)
- eyeball dissected in 2 removable halves
- cornea, iris, lens and vitreous body (3 parts)

Specyfification:

- mounted on base
- size: 19.5x17x21.5 cm
- weight: 800 g

Eyeball with Functional Lens, 6-times full-size, 5-part

Price inquiry: +48 605999769, kontakt@openmedis.pl

Product code: MA00658



Featured on the exterior of the cornea are the large lacrimal gland, muscle attachments, optic nerve and blood vessels. To study interior features, the iris/cornea unit can be removed as can the functional lucite lens which magnifies and forms inverted images. Removing the transparent vitreous body exposes the choroid coat and retina complete with the blind spot and yellow spot containing the fovea. Rods, cones, and other retinal microstructures are detailed in a highly magnified diagrammatic cross section. Mounted on a wooden base.
Size: 15 x 15 x 15 cm

Eye, 4 times life size, 6 parts

Price inquiry: +48 605999769, kontakt@openmedis.pl

Product code: MA01073

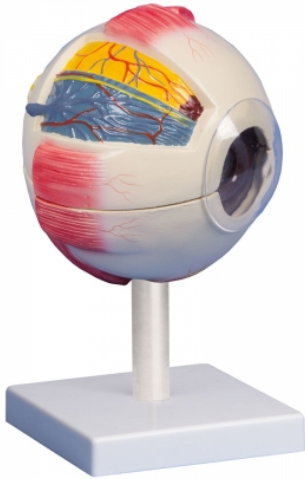


Model can be divided horizontally to show internal details. Cornea, iris, lens and vitreous body can be removed. Muscular attachments on the sclera and part of the choroid are also represented. Mounted on stand. Diameter of eyeball: 15 cm, weight: approx. 0.6 kg.

Eye, 6 times life size, 6 parts

Price inquiry: +48 605999769, kontakt@openmedis.pl

Product code: MA01211

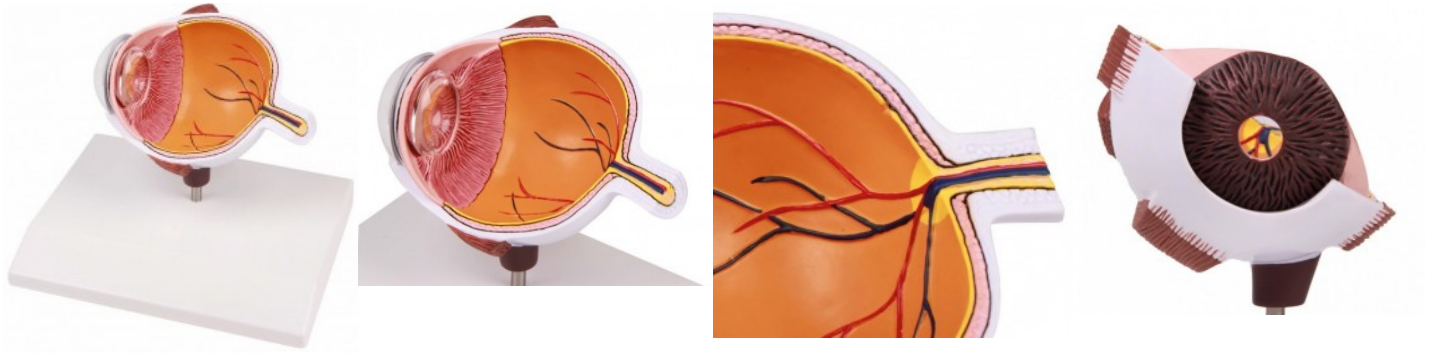


Model can be divided horizontally to show internal details. Cornea, iris, lens and vitreous body can be removed. Muscular attachments on the sclera and part of the choroid are also represented. Mounted on stand. Diameter of eyeball: 15 cm, weight: approx. 0.6 kg.

Eye half, enlarged

Price inquiry: +48 605999769, kontakt@openmedis.pl

Product code: MA02263



Cross section through the eyeball. The following anatomy is shown:

- choroid
- retina
- macula
- optic disc
- optic nerve
- central retinal artery and vein
- retinal blood vessels
- superior and inferior rectus muscle
- ora serrata
- lens
- iris
- cornea
- sclera