



## **Flexible female pelvis model with two lumbar vertebrae**

**Price inquiry:** +48 605999769, [kontakt@openmedis.pl](mailto:kontakt@openmedis.pl)

Product code: MA02594

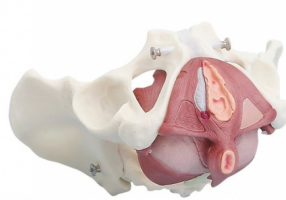


The model shows a natural cast of an adult woman's pelvis. The sacrum can be removed and movements in the sacroiliac joint can be demonstrated.

## Female pelvis with pelvic floor musculature

**Price inquiry:** +48 605999769, [kontakt@openmedis.pl](mailto:kontakt@openmedis.pl)

Product code: MA01625



This pelvis is eminently suited to explanation of the female pelvic floor. The model consists of 2 hip bones, sacrum with coccyx and the pelvic floor. The pelvic floor consists of 4 components and is made of flexible synthetic material on which the structures are painted. The model is life-size.

Size: 27 x 18 x 19 cm

## Male pelvis with pelvic floor musculature

**Price inquiry:** +48 605999769, [kontakt@openmedis.pl](mailto:kontakt@openmedis.pl)

Product code: MA00484

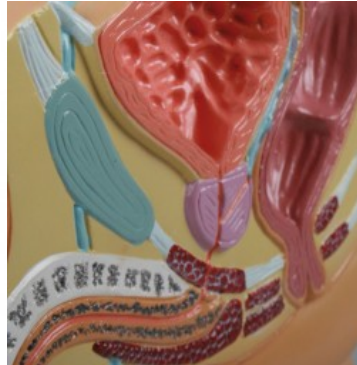


This pelvis is eminently suited to explanation of the male pelvic floor. The model consists of 2 hip bones, sacrum with coccyx and the pelvic floor. The pelvic floor is made of flexible synthetic material on which the structures are painted. It has a removable bladder with prostate and seminal vesicle. The muscle layers are in two parts. The model is life size.

## Male pelvis model in cross section: reduced 2 times

**Price inquiry:** +48 605999769, [kontakt@openmedis.pl](mailto:kontakt@openmedis.pl)

Product code: MA02264



The male pelvis model, reduced twice, shows:

- male reproductive system
- bladder
- prostate
- urethra
- rectum

## Pelvis of a 5 year old child

**Price inquiry:** +48 605999769, [kontakt@openmedis.pl](mailto:kontakt@openmedis.pl)

Product code: MA01024



- Actual cast of a real human bony child pelvis.
- 

This model is particularly suitable for explanation of the pelvis development during growth.

- The one-part model is not movable.

## Pelvis for demonstration of birth canal

**Price inquiry:** +48 605999769, [kontakt@openmedis.pl](mailto:kontakt@openmedis.pl)

Product code: MA01207



- With this model birth canal and the passage of the fetal head through the female pelvis during labour can be clearly demonstrated.
- 

The pelvic skeleton consists of flexible hip bones with movably mounted symphysis, sacrum with flexible coccyx and 2 lumbar vertebrae.

- The foetal skull is mounted with a flexible spiral rod on the base and can be moved freely.

## **Female pelvis with sacrum, 2 lumbar vertebrae and femoral stumps**

**Price inquiry:** +48 605999769, [kontakt@openmedis.pl](mailto:kontakt@openmedis.pl)

Product code: MA00487



- Natural casting of an adult female pelvis.
- 

The sacrum is removable and the movements in the iliosacral joint can be demonstrated.

- The vertebrae are mobile mounted and the femoral stumps are moveable and removable.

## Male pelvis with sacrum, 2 lumbar vertebrae and femoral stumps

**Price inquiry:** +48 605999769, [kontakt@openmedis.pl](mailto:kontakt@openmedis.pl)

Product code: MA00488



- Natural casting of an adult male pelvis.
- 

The sacrum is removable and the movements in the iliosacral joint can be demonstrated.

- The vertebrae are mobile mounted and the femoral stumps are removable and removable.



## Male pelvis model with sacrum

**Price inquiry:** +48 605999769, [kontakt@openmedis.pl](mailto:kontakt@openmedis.pl)

Product code: MA01023



A Life-size male pelvis model with sacral bone showing bone anatomy. The Examples of structures shown in the model are, for example, anterior superior iliac spines, anterior lower iliac spines, sciatic foramina, ischial spines, iliac crests, hip sockets, sacrum, coccyx, sacroiliac joints.

### Purpose:

- Learning the anatomy of the male pelvis
- Teaching the anatomy and biomechanics of sacroiliac joints
- comparative anatomy

### Additional information:

- 1: 1 scale

## Male pelvis with sacrum and 2 lumbar vertebrae

**Price inquiry:** +48 605999769, [kontakt@openmedis.pl](mailto:kontakt@openmedis.pl)

Product code: MA01155

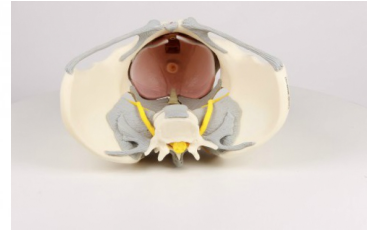
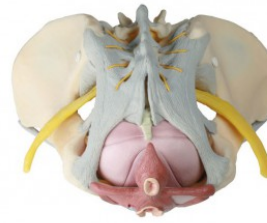
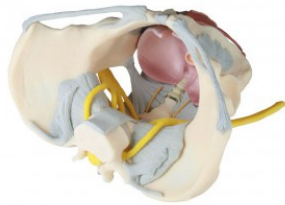
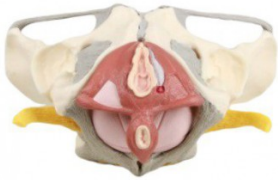


- Natural casting of an adult male pelvis.
- Wings of ilium, sacrum and flexibly mounted L1 and L2.
- The sacrum is removable and the movements in the iliosacral joint can be demonstrated.

## Female pelvis with Ligaments, Nerves and Pelvic Floor

**Price inquiry:** +48 605999769, [kontakt@openmedis.pl](mailto:kontakt@openmedis.pl)

Product code: MA00482



This pelvis is eminently suited to explanation of the female pelvic floor. The model consists of 2 hip bones, sacrum with coccyx and the pelvic floor. The pelvic floor is made of flexible synthetic material on which the structures are painted. The model is life-size. Female pelvis shows ligaments, nerves and removable 2-part pelvic floor muscles. Size: 27 x 18 x 19 cm

## Female pelvis with sacrum, 2 lumbar vertebrae and femoral stumps, flexible

**Price inquiry:** +48 605999769, [kontakt@openmedis.pl](mailto:kontakt@openmedis.pl)

Product code: MA01516



A life-size cast of the female pelvis. It has the ability to disassemble the sacrum and demonstrate mobility in the sacroiliac joint. The model also has two lower lumbar vertebrae. Fragments of the femurs move flexibly and are connected to the panicle of the hip joint. Thanks to this, it is possible to present traction in the axis of the femoral neck and traction in the long axis of the femur.

### Advantages:

- accurate bone anatomy of the female pelvis
- characteristic anatomical points of the pelvis such as: iliac spines, sciatic spines, sciatic tumors
- the possibility to present anatomical and translational mobility of the hip joint
- the possibility of disassembling fragments of the femurs

### Purpose:

- learning the pelvic anatomy of a woman
- ideally suited for childbirth preparation courses, birthing schools and for midwifery students
- manual therapy courses
- educational aid for demonstrations for patients in office conditions

### Additional information:

- natural size

## Female pelvis with sacrum

**Price inquiry:** +48 605999769, [kontakt@openmedis.pl](mailto:kontakt@openmedis.pl)

Product code: MA02538



Natural casting of an adult female pelvis. The sacrum is removable and the movements in the iliosacral joint can be demonstrated.

## Female pelvis with sacrum and 2 lumbar vertebrae

**Price inquiry:** +48 605999769, [kontakt@openmedis.pl](mailto:kontakt@openmedis.pl)

Product code: MA01022



- Natural casting of an adult female pelvis. wings of ilium, sacrum and flexibly mounted L5 and L4.
- 

The sacrum is removable and the movements in the iliosacral joint can be demonstrated.

## Human Female Pelvis, 6-parts

**Price inquiry:** +48 605999769, [kontakt@openmedis.pl](mailto:kontakt@openmedis.pl)

Product code: MA00668



This life size six part model of a female pelvis represents detailed information about the topography of bones, ligaments, vessels, nerves, pelvic floor muscles and female genital organs. It presents the whole pelvic floor with partially removable midsagittally sectioned external anal sphincter, external urethral sphincter, deep and superficial transverse perineal and bulbospongiosus.

The rectum, uterus with fallopian tubes, ovaries and vagina are also removable and can be disassembled into both halves by midsagittal section. The right pelvic half demonstrates the divisions and topographical anatomy of the common iliac artery, the external and internal artery and also of the common iliac vein and the external iliac vein. The right sacral plexus, right sciatic nerve and right pudendal nerve are also shown.

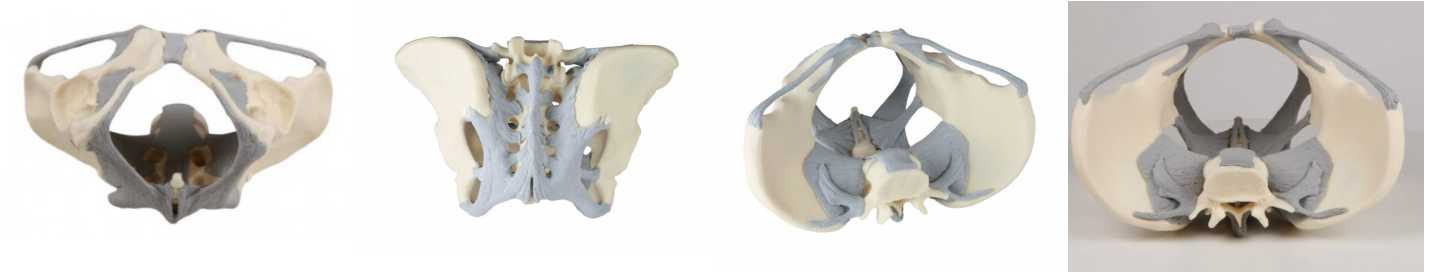
Bones and ligaments presented: Two hip bones, the pubic symphysis, the sacrum and the coccyx, the fifth lumbar vertebra with intervertebral disc. A midsagittal section through the fifth lumbar vertebra, sacrum and coccyx, allow both halves of the pelvis to be disassembled revealing a part of the cauda equina in the vertebral canal. The left half of the fifth lumbar vertebral body is removable. The right half of the model shows the following pelvic ligaments: inguinal ligament, sacrotuberous ligament, sacrospinous ligament, anterior sacroiliac ligaments, iliolumbar ligament, anterior longitudinal ligament, interosseous sacroiliac ligament, posterior sacroiliac ligament and obturator.

This model is great for detailed study of the female genital and pelvic anatomy.

## Ligamented female pelvis

**Price inquiry:** +48 605999769, [kontakt@openmedis.pl](mailto:kontakt@openmedis.pl)

Product code: MA00485



Female pelvis model with ligaments. This model is not dissectible and shows the position and function of the ligaments in the female pelvis. Life size.



## Female pelvis, flexible

**Price inquiry:** +48 605999769, [kontakt@openmedis.pl](mailto:kontakt@openmedis.pl)

Product code: MA02322



A natural cast of an adult woman's pelvis. The sacrum is removable, movement in the sacroiliac joint is natural.

## Female pelvic floor model, 12 parts

**Price inquiry:** +48 605999769, [kontakt@openmedis.pl](mailto:kontakt@openmedis.pl)

Product code: MA00626



A life-size model of the pelvic floor muscles. Individual muscles can be easily removed. The model also shows the bone anatomy of the female pelvis. The model presents the following structures:

- Obturatorius internus muscle (left and right)
- Piriformis muscle (left and right)
- Coccygeus muscle (left and right)
- Pelvic diaphragm (levator ani muscle consisting of puborectalis muscle, pubococcygeus muscle and iliococcygeus muscle)
- Urogenital diaphragm (consisting of the deep transverse muscle of perineum, the superficial transverse muscle of the perineum and the ischiocavernosus muscle)
- Sphincters of the urogenital and digestive tract (consisting of external anal sphincter, urethral sphincter and bulbospongiosus muscle)
- Anatomy bone structure of the female pelvis

### Advantages:

- 

The model consists of a total of 12 parts.

- 

It is possible to present individual layers.

- Ideally suited for childbirth preparation courses, birthing schools and for midwifery students.
- detailed pelvic bone anatomy showing characteristic anatomical points the exact anatomy of the pelvic floor muscles

### Additional information:

- 

Size: 27 x 18 x 17 cm

- Weight: 1 kg



## Half pelvis

**Price inquiry:** +48 605999769, [kontakt@openmedis.pl](mailto:kontakt@openmedis.pl)

Product code: MA02316



Excellent casting of the bones of an adult male.

## Sectional model of the female pelvis, reduced - Augmented Anatomy

**Price inquiry:** +48 605999769, [kontakt@openmedis.pl](mailto:kontakt@openmedis.pl)

Product code: MA02660



The model shows the female genitalia, bladder with ureter and anus. **Extended anatomy app:** Learning is now even easier and more efficient with the new Augmented Anatomy app in conjunction with this high-quality anatomical model! This application automatically recognizes our anatomical models and displays the nomenclature in augmented reality. As an OpenMedis client, you can use it completely free of charge and for an unlimited period of time. - High-quality augmented reality learning app - Free and without registration - Nomenclature available anytime, anywhere - Additional online links in the educational encyclopedia Our extended anatomy app works on all popular smartphones and tablets.