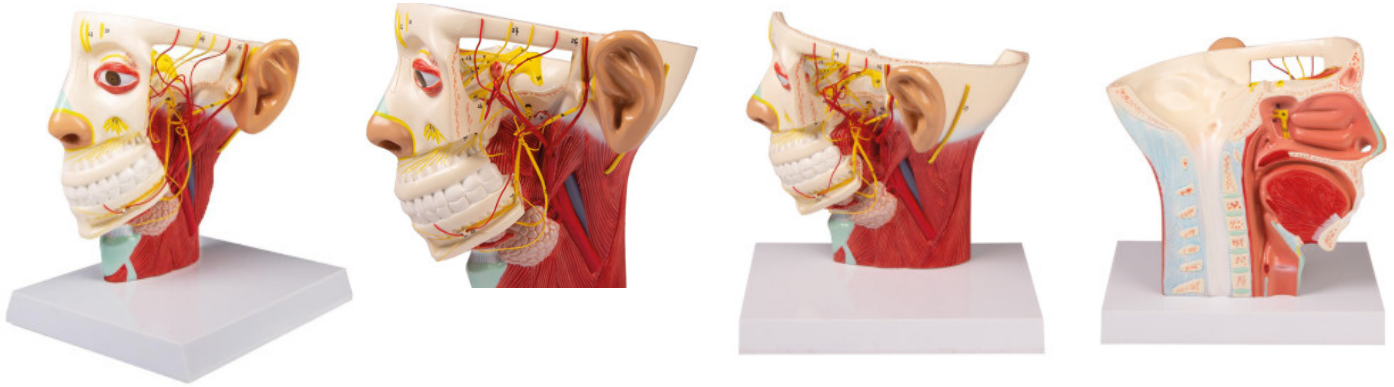


## Nerves of the head

**Price inquiry:** +48 605999769, [kontakt@openmedis.pl](mailto:kontakt@openmedis.pl)

Product code: MA04026



The **anatomical model** showing half of the head with the trigeminal nerve and its branches. The left side of the **anatomical model** also shows the muscles of the face and neck, e.g. sternocleidomastoid and trapezius muscle. The presented **anatomical model** of the head also shows blood vessels such as the carotid artery with its branches and the jugular vein. The model also presents the salivary glands and the external structure of the auricle. The right side of the **anatomical model** schematically shows the structure of the nasal cavity, sinuses, oral cavity, tongue, throat and the upper part of the esophagus. Model also shows the structure of the cervical spine.

## Neck Anatomy Model

**Price inquiry:** +48 605999769, [kontakt@openmedis.pl](mailto:kontakt@openmedis.pl)

Product code: MA02579



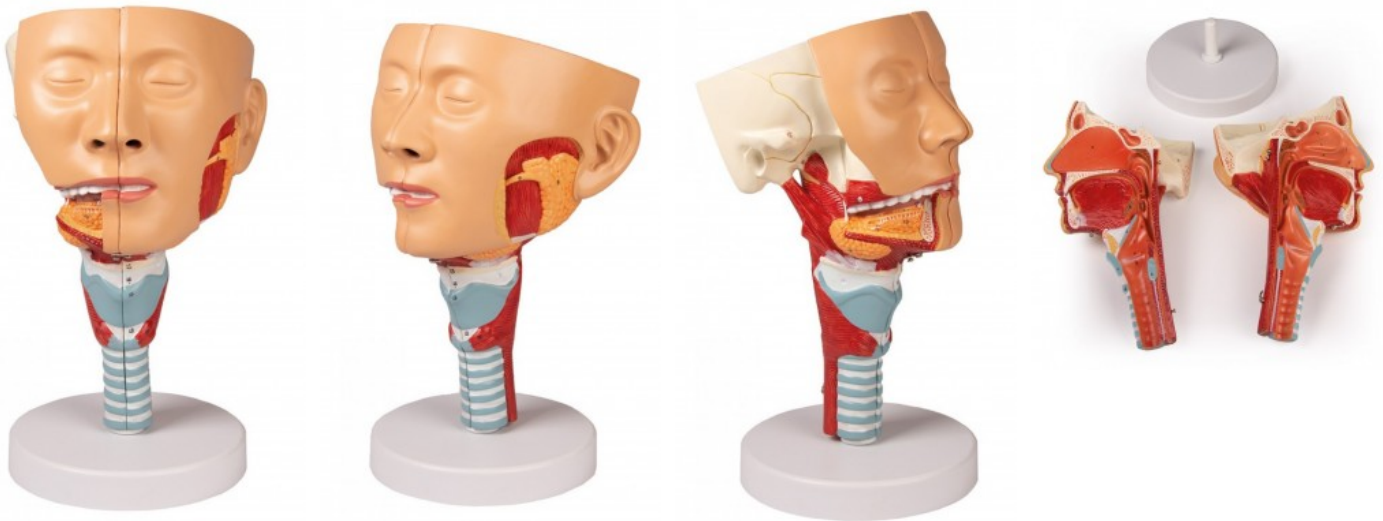
This life-size model shows the ventral view of the human neck with excellent detailed views of the most important muscles, vascular structures, nerves and glands. On base plate.

**Size:** 23 x 14 x 32 cm **Weight:** 1 kg

## Head model with throat and larynx

**Price inquiry:** +48 605999769, [kontakt@openmedis.pl](mailto:kontakt@openmedis.pl)

Product code: MA02497



This life size head model is dissected along the sagittal plane into 2 halves. Details of the oronasal cavity and larynx as well as musculature of the pharynx are exceptionally well represented. Mounted on base with stand.  
Size: 15 x 15 x 30 cm, Weight: approx. 0.8 kg

## Base of head with 7-part brain

**Price inquiry:** +48 605999769, [kontakt@openmedis.pl](mailto:kontakt@openmedis.pl)

Product code: MA00914



The presented model was made in such a way as to present the life-size human head with the brain, the position of the arterial and venous vessels of the head, Willis arterial circle, cranial nerves and brainstem. The whole brain can be pulled out of the skull and divided into 7 parts. The right cerebral hemisphere of the brain is divided along the corpus callosum, while the left one can be separated in such a way as to visualize the posterior horn of the lateral ventricle and the hippocampus. The model also presents the position of the eyeball in the orbit, tear gland, optic nerve, middle and inner ear. It also presents 107 hand-numbered elements.

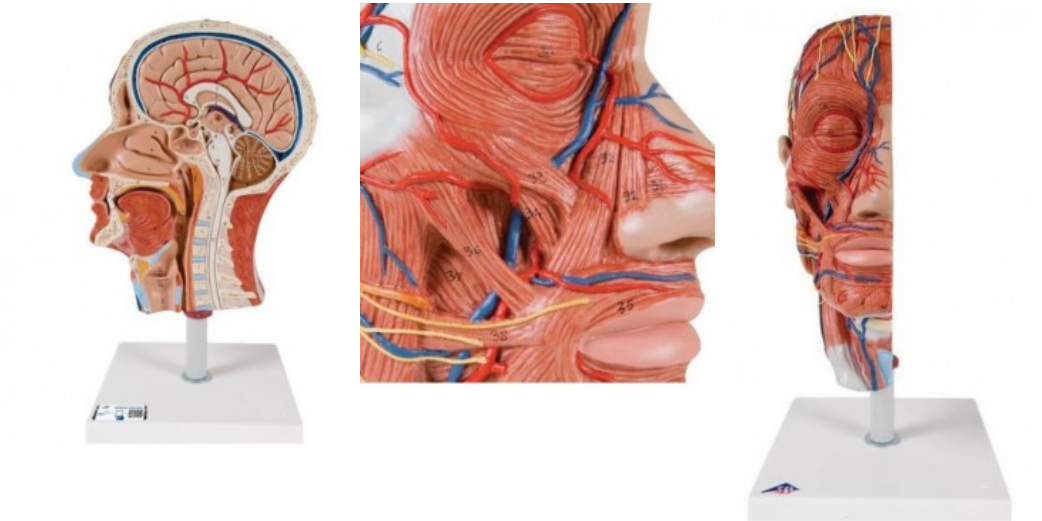
### Additional information:

- It is supplied with an educational card.
- Size: 17 x 22 x 15 cm
- Structure numbered

## Head model with muscles, blood vessels and nerves

Price: 407.13 EUR + shipping cost

Product code: MA01930



This high quality model represents the outer, superficial and the internal (median section) structures of head and neck. The half head with musculature is delivered on removable stand for easy display in a classroom or doctor's office. Important anatomical structures are present.

Every original 3B Scientific® Anatomy Model gives you direct access to its digital twin on your smartphone, tablet or desktop device.

Enjoy using the exclusive virtual anatomy content with the following features:

- Freely rotate your digital model and zoom in and out
- Display hotspots and their anatomical structures
- Augmented Reality (AR) feature starts your virtual anatomy model
- Anatomy Quiz function to test and improve your anatomical knowledge with instant results and final score evaluation
- Drawing function that allows image customization with save and share function
- Useful Notes function to help you with your personal learning
- Possibility to learn both male and female anatomy
- Easy access to 3D content both online and offline
- Available in 11 languages

### Specyfification:

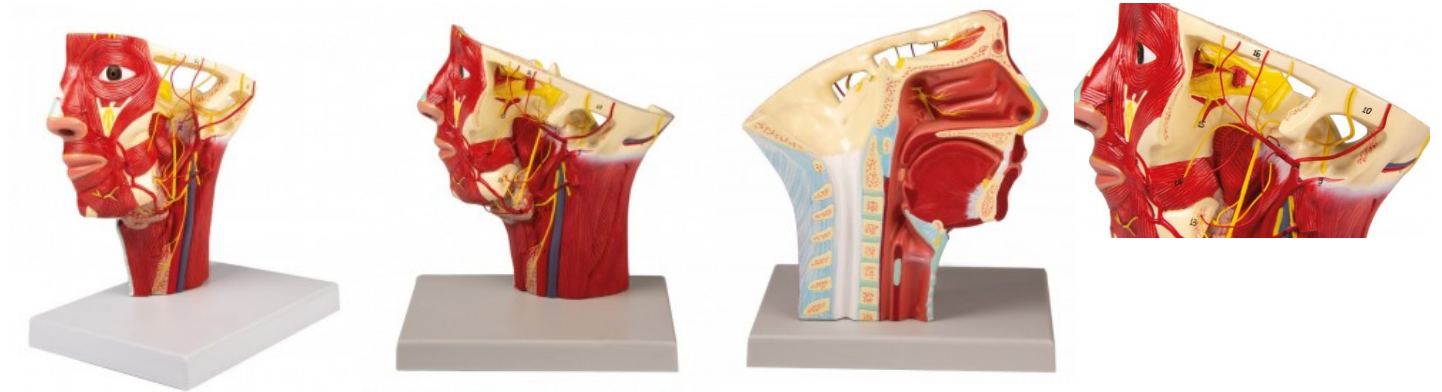
- dimensions: 22 x 18 x 46cm
- model on a base
- scale 1:1



## Head model with pathway of arteries

**Price inquiry:** +48 605999769, [kontakt@openmedis.pl](mailto:kontakt@openmedis.pl)

Product code: MA07971



This model shows the pathway of the left external carotid artery, including collateral and terminal branches. Mounted on base.

Size: 20 x 15 x 23 cm, Weight: approx. 0.6 kg

## Head and Neck, 5-part

**Price inquiry:** +48 605999769, [kontakt@openmedis.pl](mailto:kontakt@openmedis.pl)

Product code: MA00704



The presented model shows the head and neck divided in the middle section. Individual elements of the anatomical structure have been numbered. The skin and facial muscles on the right side of the face of the model are removed to represent deeper midwifery structures. The eyeball, bone covering the maxillary sinus and right half of the tongue are removed.

### **Additional information:**

- Size: 38 x 40 x 28 cm
- weight: 3kg



## Head model, 4 part

**Price inquiry:** +48 605999769, [kontakt@openmedis.pl](mailto:kontakt@openmedis.pl)

Product code: MA00833



A life-size human head model that can be part into 4 parts. The left side of the face is depicted in the sagittal and horizontal cross-section, showing numerous elements of the skull and brain, as well as: paranasal sinuses.

### You can spread the model into the following parts:

- Half of the brain and arteries
- Half cerebellum
- Eyeball with optic nerve

### Additional information:

- Model on base
- Size: 21 x 15 x 16 cm,
- weight: approx. 1 kg

## Head model

**Price inquiry:** +48 605999769, [kontakt@openmedis.pl](mailto:kontakt@openmedis.pl)

Product code: AM03910



This life-size head model is sliced horizontally into 12 pieces, giving an idea of how computer tomography and magnetic resonance work. Each slice can be rotated and removed for closer examination of its anatomical detail, which is reproduced with great accuracy. All structures including muscles, nerves, brain gyri and sulci are numbered and identified on the accompanying key card.

Size: 25x18x24cm, Weight: 3kg

## Half Head with Vessels

**Price inquiry:** +48 605999769, [kontakt@openmedis.pl](mailto:kontakt@openmedis.pl)

Product code: MA07981



Life size model shows the right half of the human head and neck, sectioned along the sagittal plane. A superficial dissection exposes the facial muscles, the superficial blood vessels and nerve branches of the face and scalp, and the parotid and submandibular glands. A median dissection exposes the brain with its internal structure; the pharynx and upper respiratory tract; and a section of the cervical vertebrae. Mounted on base.

Size: 20 x 15 x 29 cm, Weight: approx. 1.2 kg

## Median section of the head (relief model)

**Price inquiry:** +48 605999769, [kontakt@openmedis.pl](mailto:kontakt@openmedis.pl)

Product code: MA00693



A Life-size anatomical model of the head cross-section. It shows the superficial and internal structures, including:

- nervous system (brain, cerebellum, spinal cord),
- upper respiratory tract (mouth, pharynx, larynx),
- elements of the digestive system (mouth, throat, esophagus, tongue)
- cervical spine
- sinuses

### **Additional information:**

- Delivered on the basis.
- Size without base: 24 x 20 x 2 cm,
- weight 1.1 kg

### **Application:**

- Anatomical models of the head are ideal equipment for anatomy laboratories, biological laboratories and medical offices
- Perfect for studying the anatomy and topography of head structures

## Veins of the head

**Price inquiry:** +48 605999769, [kontakt@openmedis.pl](mailto:kontakt@openmedis.pl)

Product code: MA02577



The model shows the course of the left internal jugular vein in the head and neck region with its supplying venous vessels. With base.

**Size:** 20 x 15 x 26 cm, **weight:** approx. 0.6 kg

## Frontal and median section of the head (relief model)

**Price inquiry:** +48 605999769, [kontakt@openmedis.pl](mailto:kontakt@openmedis.pl)

Product code: MA02177



The life-size model presents cross-sections of the human head in two planes.

### **specifications:**

- dimensions: 55cm x 35cm x 3cm
- weight: approx. 2 kg
- advanced painting
- delivered based on