

Child skull, 12 year old

Price inquiry: +48 605999769, kontakt@openmedis.pl

Product code: MA00464



First class actual cast of a female human 12 year old child in extraordinary high detail. Due to the very special production technology even smallest details are reproduced and the model looks and feels almost like a real human skull.

Size: 18 x 10 x 15 cm, weight: 0.3 kg

Human Skull, 13 year old

Price inquiry: +48 605999769, kontakt@openmedis.pl

Product code: MA01038



This skull offers an excellent example of an adolescent. With the exception of the wisdom teeth, all permanent teeth are fully erupted, and no deciduous dentition remains. The apices of the canines, premolars, and second molars are approximately one half to two-thirds closed radiographically; this is consistent with 13.5 - 14 years. The crowns of the three remaining third molars are in an early stage of calcification.

Child Skull, 5 year old

Price inquiry: +48 605999769, kontakt@openmedis.pl

Product code: MA00463



Skull model of a 5-year-old child. Extraordinary detail of anatomical details. Thanks to the special production technology, all major age-appropriate structures are reflected.

Additional information:

- Size: 18 x 12 x 13cm,
- Weight: 1 kg

Child Skull, 9 year old

Price inquiry: +48 605999769, kontakt@openmedis.pl

Product code: MA00470



Skull model of a 9-year-old child. Thanks to the special production technology, the smallest anatomical details are reflected, thanks to which this model looks like a real skull.

Additional information:

- Size: 19 x 13 x 14cm,
- Weight: 1 kg
- High detail

Child skull, 1,5 year old

Price inquiry: +48 605999769, kontakt@openmedis.pl

Product code: MA02294



First class actual cast of a 1 ½ year old child in extraordinary high detail. Due to the very special production technology even smallest details are reproduced and the model looks and feels almost like a real human skull.

Specifications:

- Size: 16 x 12 x 13 cm

Luxury demonstration Children's skull; 14 pieces; for advanced studies

Price inquiry: +48 605999769, kontakt@openmedis.pl

Product code: MA02611



This skull model is a cast of a real human children's skull specimen and shows all anatomical structures in great detail. It was developed for students of anatomy, medicine, surgery, ENT medicine, ophthalmology and dentistry. The skull is complexly cut and joined together with metal and magnetic connections.

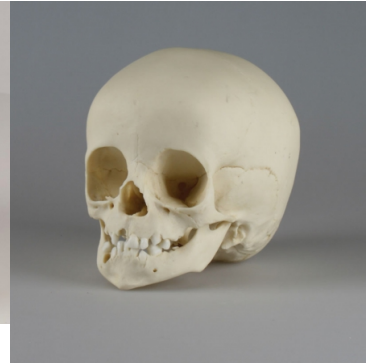
The top of the skull is open and removable. Bony impressions of the sinus sagittalis, the sinus transversus and the sinus sigmoideus as well as the meninges are painted. The base of the skull is cut sagittally in such a way that the cut runs through a sieve plate on one side and another cut with the same plane through the other sieve plate of the ethmoid bone, which leaves the Christa galli and the perpendicular plate as well as the entire nasal septum intact. The structures of the anterior, middle and posterior fossa are easily accessible. One can see the nasal cavity, the turbinate, the septum and the bony and nasopharynx directly. The nasal septum can be removed from the surrounding bone structures. The removable temporal bone shows a complete external auditory canal.

The upper jaw and the lower jaw show the structures of the teeth, the roots, the bony edge of the alveolar process as well as dental nerves and vessels. The maxillary sinus can be opened by removing a flap. The teeth, including the permanent teeth still embedded in the bone, can be made accessible by removing a bone flap.

Child skull, 14 months old

Price inquiry: +48 605999769, kontakt@openmedis.pl

Product code: MA00471



First class actual cast of a 14 months old child in extraordinary high detail. Due to the very special production technology even smallest details are reproduced and the model looks and feels almost like a real human skull.

Size: 15 x 11 x 13 cm

Child skull, 15 months old

Price inquiry: +48 605999769, kontakt@openmedis.pl

Product code: MA01039



- First class actual cast of a 15 months old child in extraordinary high detail.
- Due to the very special production technology even smallest details are reproduced and the model looks and feels almost like a real human skull.
- Size: 15 x 11 x 14.5 cm

Child skull, 3 year old

Price inquiry: +48 605999769, kontakt@openmedis.pl

Product code: MA00468



- First class actual cast of a 3 year old child in extraordinary high detail.
- This skull also shows numerous Wormian (sutural) bones found along the lambdoid suture.
- The epipteric bone, which is a Wormian bone found at the anatomical landmark known as the pterion is also shown.
- Size: 16.5 x 12 x 13 cm

Child Skull, 4 year old

Price inquiry: +48 605999769, kontakt@openmedis.pl

Product code: MA00469



First class actual cast of a 4 year old child in extraordinary high detail. Due to the very special production technology even smallest details are reproduced and the model looks and feels almost like a real human skull. Size: 18 x 12 x 13 cm

Child Skull, 1 year old

Price inquiry: +48 605999769, kontakt@openmedis.pl

Product code: MA00465



First class actual cast of a 1 year old child in extraordinary high detail and calvarian cut. Due to the very special production technology even smallest details are reproduced and the model looks and feels almost like a real human skull. Size: 15.3 x 12 x 12 cm

Skull, 5 year old, open jaw

Price inquiry: +48 605999769, kontakt@openmedis.pl

Product code: MA02328



First class actual cast of a 5 year old child in extraordinary high detail. The upper and lower jaw are opened to show teeth eruption.