

Child skull, 12 year old

Price inquiry: +48 605999769, kontakt@openmedis.pl

Product code: MA00464



First class actual cast of a female human 12 year old child in extraordinary high detail. Due to the very special production technology even smallest details are reproduced and the model looks and feels almost like a real human skull.

Size: 18 x 10 x 15 cm, weight: 0.3 kg

Human Skull, 13 year old

Price inquiry: +48 605999769, kontakt@openmedis.pl

Product code: MA01038



This skull offers an excellent example of an adolescent. With the exception of the wisdom teeth, all permanent teeth are fully erupted, and no deciduous dentition remains. The apices of the canines, premolars, and second molars are approximately one half to two-thirds closed radiographically; this is consistent with 13.5 - 14 years. The crowns of the three remaining third molars are in an early stage of calcification.

Child Skull, 5 year old

Price inquiry: +48 605999769, kontakt@openmedis.pl

Product code: MA00463



Skull model of a 5-year-old child. Extraordinary detail of anatomical details. Thanks to the special production technology, all major age-appropriate structures are reflected.

Additional information:

- Size: 18 x 12 x 13cm,
- Weight: 1 kg

Child Skull, 9 year old

Price inquiry: +48 605999769, kontakt@openmedis.pl

Product code: MA00470



Skull model of a 9-year-old child. Thanks to the special production technology, the smallest anatomical details are reflected, thanks to which this model looks like a real skull.

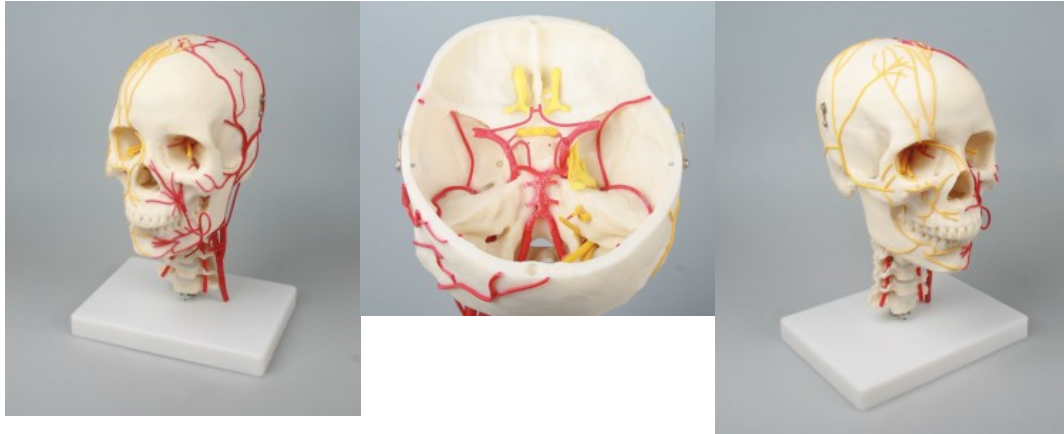
Additional information:

- Size: 19 x 13 x 14cm,
- Weight: 1 kg
- High detail

Neurovascular skull with brain

Price inquiry: +48 605999769, kontakt@openmedis.pl

Product code: MA00660



A life-size anatomical model of the human skull with vascularization. It presents the vascularization and innervation of the skull. Has 7 cervical vertebrae. On one side of the model arteries were presented, while on the other nerves. It is possible to detach the cranial vault so that you can observe the course of the main nerves and vessels inside the skull.

Additional information:

- Weight: 1.5 kg
- 1:1 scale

Dental skull, 4-part

Price inquiry: +48 605999769, kontakt@openmedis.pl

Product code: MA01034



The teeth in the upper and lower jaw can be extracted and reinserted. The mandible is open and shows roots, spongiosa, nerve canal and an impacted wisdom tooth. The mandible is removable.

Size: 22 x 13 x 17 cm, weight: 0.7 kg

Skull model, 3-part, numbered

Price inquiry: +48 605999769, kontakt@openmedis.pl

Product code: MA02565



In the presented skull model, individual bone elements were numbered. Anatomical models made in such a way facilitate the learning of anatomy significantly. Ideally suited as teaching equipment for anatomical and natural laboratories. Teeth correspond to real, natural teeth regarding their position. Thanks to the movable and removable mandible, it is possible to present the rolls in the temporomandibular joints. The skull cover is well suited to the base using metal pins and strong, discreetly placed magnets. Thanks to this solution, the impractical and unsightly pins and hooks have been abandoned, which have been used so far in this type of models. This is a feature that distinguishes this model from other products available on the fish.

This model is built of 3 parts: base of the skull, skull cover, jaw

Additional features:

- Size: 18 x 19 x 12 cm,
- weight: 0.7 kg
- Provided with an educational card
- The model contains additionally numbered individual elements.

Adult skull, male

Price inquiry: +48 605999769, kontakt@openmedis.pl

Product code: MA00466



First class actual cast of a male human adult in extraordinary high detail. Due to the very special production technology even smallest details are reproduced and the model looks and feels almost like a real human skull. The structures are carefully painted to improve the visibility and make the model look like a real skull. Because of its high quality this skull is difficult to identify as a plastic replica.

Size: 21.5 x 14 x 21.5 cm, weight: 0.8 kg

Adolescent skull, female

Price inquiry: +48 605999769, kontakt@openmedis.pl

Product code: MA01037



First class actual cast of a female human adolescent in extraordinary high detail. Due to the very special production technology even smallest details are reproduced and the model looks and feels almost like a real human skull. The structures are carefully painted to improve the visibility and make the model look like a real skull. Because of its high quality this skull is difficult to identify as a plastic replica. Two part model.

Size: 16.5 x 11 x 16 cm, weight: 0.4 kg

Child skull, 1,5 year old

Price inquiry: +48 605999769, kontakt@openmedis.pl

Product code: MA02294



First class actual cast of a 1 ½ year old child in extraordinary high detail. Due to the very special production technology even smallest details are reproduced and the model looks and feels almost like a real human skull.

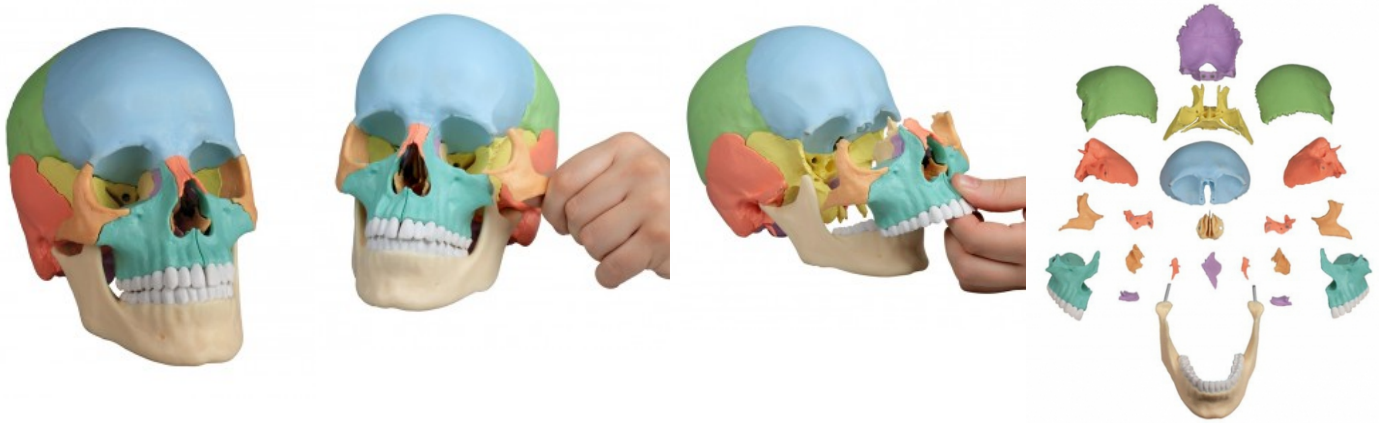
Specifications:

- Size: 16 x 12 x 13 cm

Osteopathic Skull Model, 22 part, didactical version

Price inquiry: +48 605999769, kontakt@openmedis.pl

Product code: MA00033



This fascinating **anatomical model** of an average European adult skull can be disassembled into 22 single bones. During development of this model one of the main targets was to make the model easy to assemble and dismantle. Stable parts with convenient magnet connections make handling of the product a child's play. The detailed bones do not need any complicated pins to be stuck into holes, they almost slide into position, guided by realistic bone sutures and held by strong magnets. The perfect tool for Osteopaths.

The following bones are represented:

- Parietal bone left and right
- Occipital bone
- Temporal bone left and right
- Sphenoid bone
- Frontal bone
- Ethmoid bone
- Vomer
- Palatine bone, left and right
- Inferior nasal concha left and right
- Maxilla with teeth, left and right
- Lacrimal bone left and right
- Nasal bone left and right
- Zygomatic bone left and right
- Mandible with teeth

Supplied with users guide in English and German as well as a CD with Key card document in Latin, German, English, French, Spanish, Portuguese, Italian, Polish, Russian, Arabic, Korean and Japanese.

Fetal skull, 13 weeks old

Price inquiry: +48 605999769, kontakt@openmedis.pl

Product code: MA02295



Perfect reproduction of the fetal skull. At first glance, this model is hard to distinguish from the real skull and gives an impressive overview of the development of the skull in the womb.

Specification:

- dimensions: 5.9 x 4.2 x 4.6 cm

Fetal skull, 30 weeks

Price inquiry: +48 605999769, kontakt@openmedis.pl

Product code: MA02323



This model shows a human fetal skull at 30 weeks gestation.

Specification:

- size: 12 x 12 x 27 cm
- weight: 0.4 kg

Fetal Human Skull 40 weeks with Calvarium Cut

Price inquiry: +48 605999769, kontakt@openmedis.pl

Product code: MA02327



We are excited to offer what is, perhaps, the only fetal skull with the calvarium cut. The detail present in this skull, including the ossicles, all calvarial sutures, and fontanelles, will guarantee its value as a teaching tool both for the educator and practitioner. By removing the calvarium, osteologists are able to learn the complex anatomy of the endocranium, especially including the pathways of the foramina of the skull base and the orbit.

Scaphocephalic skull

Price inquiry: +48 605999769, kontakt@openmedis.pl

Product code: MA01452



An excellent example of a condition in which the skull is abnormally long and narrow, as a result of premature closure of the sagittal suture, with heavy centers of ossification in the line of the suture.

Size: 20 x 20 x 11.5 cm

Skull model for dentistry with TMD syndrome, 8 parts

Price inquiry: +48 605999769, kontakt@openmedis.pl

Product code: MA03477



In addition to the detailed reproduction of the skull structures, this first-class model of a human skull focuses specifically on teeth and jaws and is therefore the perfect teaching and demonstration tool for the field of dentistry and oral surgery.

The front half of the upper and lower jaw can be removed to reveal teeth with roots, unilateral nerves and blood vessels as well as the maxillary sinuses. The skull is not only suitable as a perfect aid for learning anatomy, but also as an explanatory aid for oral surgery and implantology.

This special design serves to illustrate the TMD syndrome. In temporomandibular dysfunction, there is a dysfunction in the interaction between temporomandibular joints, masticatory muscles and teeth. The wear of the tooth enamel due to grinding, wear of the discus as well as relevant masticatory muscles M. masseter, pars superficialis, pars profundus as well as the relatively newly discovered pars coronoidea are shown. All three muscles are detachable.

Skull model, 3-part, didactical painted

Price inquiry: +48 605999769, kontakt@openmedis.pl

Product code: MA02566



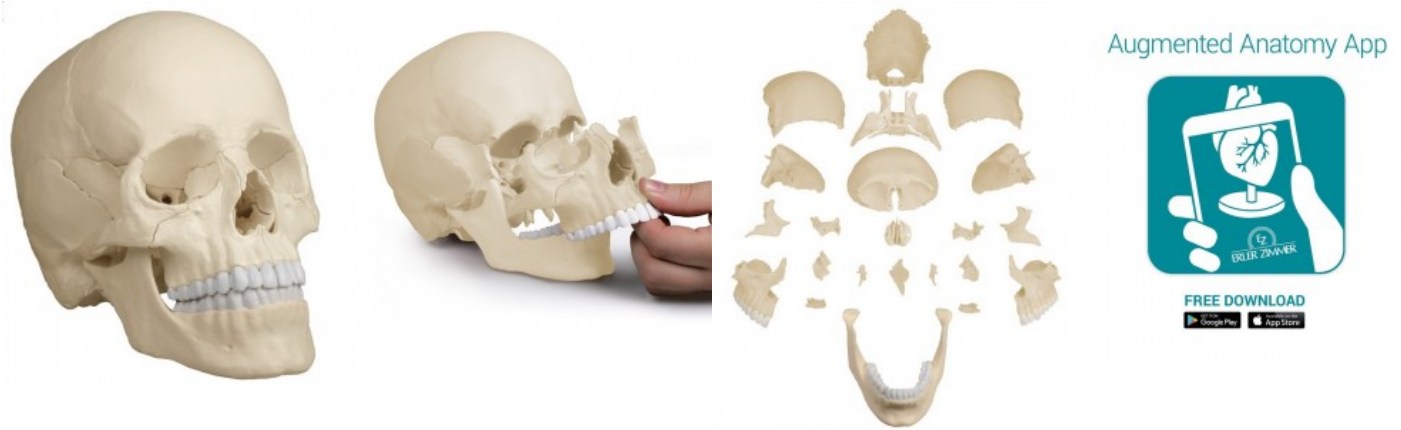
Skull with didactical painting of individual bones on one side of the skull. The bones are numbered referring to the included nomenclature.

Size: 18 x 19 x 12 cm, weight: 0.7 kg

Osteopathic Skull Model, 22 part, anatomical version

Price inquiry: +48 605999769, kontakt@openmedis.pl

Product code: MA00460



- This fascinating model of an average European adult skull can be disassembled into 22 single bones.
- During development of this model one of the main targets was to make the model easy to assemble and dismantle.
- Stable parts with convenient magnet connections make handling of the product a child's play.
- The detailed bones do not need any complicated pins to be stuck into holes, they almost slide into position, guided by realistic bone sutures and held by strong magnets.
- The perfect tool for Osteopaths.

The following bones are represented:

- Parietal bone left and right
- Occipital bone
- Temporal bone left and right
- Sphenoid bone- Frontal bone
- Ethmoid bone
- Vomer
- Palatine bone, left and right
- Inferior nasal concha left and right
- Maxilla with teeth, left and right
- Lacrimal bone left and right
- Nasal bone left and right
- Zygomatic bone left and right
- Mandible with teeth

Supplied with users guide in English and German as well as a CD with Key card document in Latin, German, English, French, Spanish, Portuguese, Italian, Polish, Russian, Arabic, Korean and Japanese.

Model in natural bone colour.

Luxury demonstration skull; 14 parts; for advanced studies

Price inquiry: +48 605999769, kontakt@openmedis.pl

Product code: MA02393



This skull model is an actual cast of a real human specimen and shows all anatomical structures in highest detail. It is made for students in anatomy, medicine, surgery, otolaryngology, ophthalmology and dentistry. The Skull is intricately sectioned and reassembled with metal and magnet connections.

The calvarium is sectioned horizontally leaving the temporal bone and its sutures intact. Bony impressions of the superior sagittal sinus, transverse sinus and sigmoid sinus as well as the meningeal vessels have been painted. The base portion of the skull has been sagittally sectioned in the way that it passes through the one cribriform plate on one side and another section in the same plane passes through the other cribriform plate of the ethmoid leaving the crista galli perpendicular plate of the ethmoid intact as also the whole nasal septum. The structures of anterior, middle and posterior cranial fossae are easily accessible. One can directly visualize the nasal cavity, the concha, the nasal septum, the bony pharyngeal and naso-pharyngeal spaces. The nasal septum is separable from surrounding bones. The frontal sinuses have been dissected on one side to show the sinus as whole and on the other side chiselled out for full access to the sinus. The relation of this sinus to the nasal cavity is clearly shown and is especially valuable for otolaryngologists. On one side of the skull the temporal bone has been left in situ. The other temporal bone is removable from the skull. A portion of the mastoid and squama can be removed along with the tympanic antrum, baring internal ear in full view. All three semicircular canals are visible along with the course of the facial nerve coursing backwards and then downwards emerging finally through the stylo-mastoid foramen. The removable temporal bone has the external auditory meatus intact. An almost vertical section through the squama mastoid process and carried inwards along the petro-squamosal junction has been made and when apart, one sees the position of tympanic membrane. The carotid canal has been opened as also the cochlea, showing the internal canal, and the course of the facial nerve has been depicted. Oval window, the semi-circular canals, and aditus of the tympanic antrum are visible. The maxilla and mandible expose the structures of dentition, the roots, the bony margin of the alveolar process, dental vessels and nerves are visible. The maxillary sinus can be opened by removing a bone flap. Teeth of the right mandible are sectioned to show the inner tooth structure.

Luxury demonstration Children's skull; 14 pieces; for advanced studies

Price inquiry: +48 605999769, kontakt@openmedis.pl

Product code: MA02611



This skull model is a cast of a real human children's skull specimen and shows all anatomical structures in great detail. It was developed for students of anatomy, medicine, surgery, ENT medicine, ophthalmology and dentistry. The skull is complexly cut and joined together with metal and magnetic connections.

The top of the skull is open and removable. Bony impressions of the sinus sagittalis, the sinus transversus and the sinus sigmoideus as well as the meninges are painted. The base of the skull is cut sagittally in such a way that the cut runs through a sieve plate on one side and another cut with the same plane through the other sieve plate of the ethmoid bone, which leaves the Christa galli and the perpendicular plate as well as the entire nasal septum intact. The structures of the anterior, middle and posterior fossa are easily accessible. One can see the nasal cavity, the turbinate, the septum and the bony and nasopharynx directly. The nasal septum can be removed from the surrounding bone structures. The removable temporal bone shows a complete external auditory canal.

The upper jaw and the lower jaw show the structures of the teeth, the roots, the bony edge of the alveolar process as well as dental nerves and vessels. The maxillary sinus can be opened by removing a flap. The teeth, including the permanent teeth still embedded in the bone, can be made accessible by removing a bone flap.

Miniature skull, 3 parts

Price inquiry: +48 605999769, kontakt@openmedis.pl

Product code: MA02325



A miniature of a natural skull. With movable jaw and removable top.

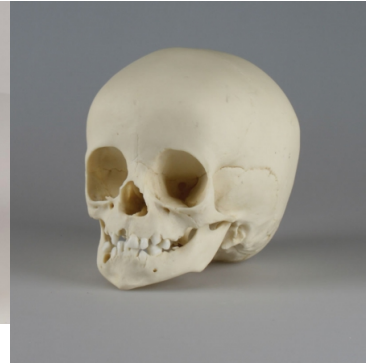
Specification:

- Without the stand
- Size: 7.5 x 6.5 x 10 cm

Child skull, 14 months old

Price inquiry: +48 605999769, kontakt@openmedis.pl

Product code: MA00471



First class actual cast of a 14 months old child in extraordinary high detail. Due to the very special production technology even smallest details are reproduced and the model looks and feels almost like a real human skull.

Size: 15 x 11 x 13 cm

Child skull, 15 months old

Price inquiry: +48 605999769, kontakt@openmedis.pl

Product code: MA01039



- First class actual cast of a 15 months old child in extraordinary high detail.
- Due to the very special production technology even smallest details are reproduced and the model looks and feels almost like a real human skull.
- Size: 15 x 11 x 14.5 cm

Child skull, 3 year old

Price inquiry: +48 605999769, kontakt@openmedis.pl

Product code: MA00468

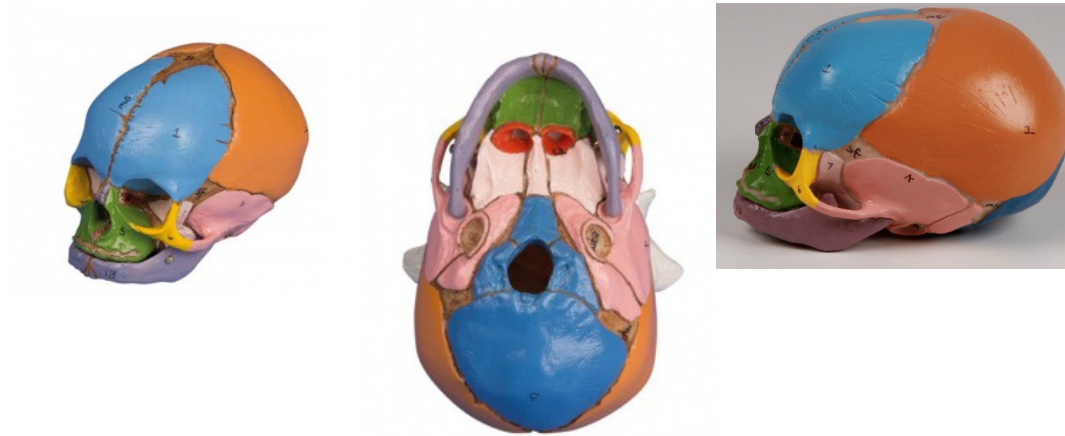


- First class actual cast of a 3 year old child in extraordinary high detail.
- This skull also shows numerous Wormian (sutural) bones found along the lambdoid suture.
- The epipteric bone, which is a Wormian bone found at the anatomical landmark known as the pterion is also shown.
- Size: 16.5 x 12 x 13 cm

Didactic Foetal Skull, 38. week

Price inquiry: +48 605999769, kontakt@openmedis.pl

Product code: MA01154



A very realistic model of a 38-week foetal skull manufactured from our unique bone-like material. The separate skull bones are clearly shown and meticulous moulding distinguishes such detail as sutures, fontanelles and the external auditory meatus. Supplied with key card.

Child Skull, 4 year old

Price inquiry: +48 605999769, kontakt@openmedis.pl

Product code: MA00469



First class actual cast of a 4 year old child in extraordinary high detail. Due to the very special production technology even smallest details are reproduced and the model looks and feels almost like a real human skull. Size: 18 x 12 x 13 cm

Anatomical skull model, 12 parts

Price inquiry: +48 605999769, kontakt@openmedis.pl

Product code: MA02000



12 partial anatomical model of human skull. High accuracy of performance, based on the analysis of radiological images, the structure of real skulls and literature.

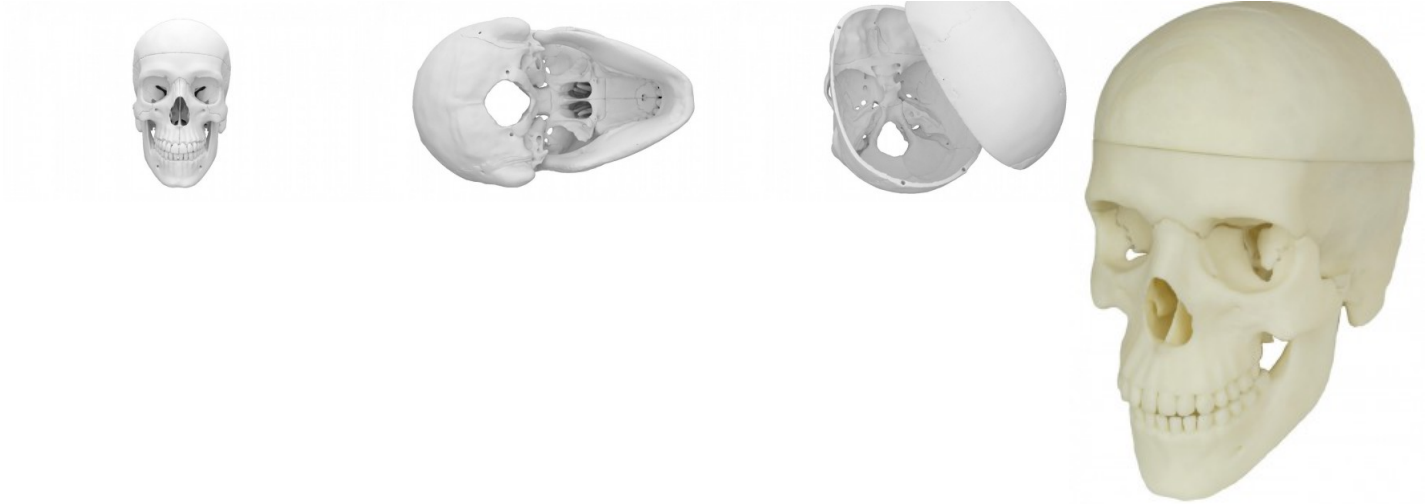
The model is divided into: frontal bone, 2 parietal bones, 2 temporal bones, occipital bone jaw, 4 partial foldable skullcap, blade, ethmoid bone, wedge bone.

It has patency of the cranial nerve channels. The maxillary sinuses were visualized. The skull has a correct bite, approved by a dentist. All parts are connected by strong, discreetly hidden magnets.

Detailed 3d skull model for learning anatomy, 4-parts

Price inquiry: +48 605999769, kontakt@openmedis.pl

Product code: MA01945



Detailed skull model for learning anatomy designed for medical and dental students as well as other medical care. Thanks to the use of 3D printing technology and radiological data, this product contains numerous anatomical details necessary for learning anatomy in medicine. The skull has the recommendation of anatomists conducting classes at medical universities.

The model has patent patches of cranial nerve passage.

The model consists of a total of **4 parts** that join together into one whole using discreetly located magnets.

Skull model, 3 parts

Price inquiry: +48 605999769, kontakt@openmedis.pl

Product code: MA00455



Developing this lifelike reproduction of a human skull we have used the latest technology to digitalize a real human skull and idealized it under the aspects of medical education. This means the skull was adjusted to be anatomically ideal, all anatomical details and structures are present and correspond to anatomical teaching. The three part model consists of skull base, skull cap and lower jaw. The teeth correspond with real dentition concerning position and embrasure. The lower jaw is movably mounted and can be removed. The skull cap is aligned with the skull base using metal pins and held by strong magnets. Due to this there is no need for disturbing hooks, no plastic pins that could break and no risk of having a gap between skull cap and skull base. This distinguishes the model from competitor's skulls with plastic pins and disturbing metal hooks. The model corresponds with an average European adult concerning size and proportions. Due to modern production technologies and high production volume this very successful model can be offered at a very reasonable price, so everyone can afford this extraordinary model.

Size: 18 x 19 x 12 cm, weight: 0.7 kg

Articulated Human Medical Study Skull

Price inquiry: +48 605999769, kontakt@openmedis.pl

Product code: MA02326



This premier anatomy skull is a composite of 22 separate cranial bones and 32 separate teeth. It is articulated bone by bone from the completely disarticulated version (Ref.no. 4706) and is cradled on a stand with both parietal bones separated, thereby giving access to the interior of the cranium. The 32 separate teeth may be removed individually. This skull of a probable young adult female is finely detailed, showing all the foramina, canals, sutures and minute details of a real skull. Please note that this skull does not disarticulate more than what is shown on the image except that the all teeth are removable. A report by Dr. Boaz titled „Osteological Tracing of Cranial Nerves“ is available and will be sent with the purchase of this skull. The report contains two charts and an 22 x 28 cm poster titled „Bristle through bone: An osteological model approach to teaching the cranial nerves and foramina,“ presented at the American Association of Anatomists/ Experimental Biology meeting in April 2006 by Noel Boaz and David Kronen. Case and stand included.

Skull model for dentistry and jaw surgery, 5 parts

Price inquiry: +48 605999769, kontakt@openmedis.pl

Product code: AM02637



In addition to the detailed reproduction of the skull structures, this first-class model of a human skull focuses specifically on teeth and jaws and is therefore the perfect teaching and demonstration tool for the field of dentistry and oral surgery. The front half of the upper and lower jaw can be removed, revealing teeth with roots, nerves and blood vessels on one side, and the maxillary sinuses. The skull is not only suitable as a perfect aid for learning anatomy, but also as an explanation aid for jaw surgery and implantology.

Adult skull, female

Price inquiry: +48 605999769, kontakt@openmedis.pl

Product code: MA00462



First class actual cast of a female human adult in extraordinary high detail. Due to the very special production technology even smallest details are reproduced and the model looks and feels almost like a real human skull. The structures are carefully painted to improve the visibility and make the model look like a real skull. Because of its high quality this skull is difficult to identify as a plastic replica.

Size: 19 x 12 x 16 cm, weight: 0.8 kg

Adult skull model - bones disassembled in a suitcase

Price inquiry: +48 605999769, kontakt@openmedis.pl

Product code: MA02513



High-quality, detailed model of an adult human skull showing anatomical details of its individual bones placed individually in a suitcase. It is an ideal model for learning osteology. It allows the student / student to evaluate individual bones, the seams between the bones and the openings of the skull. All the holes are precisely made, which enables students to understand the course of the branches of the cranial nerves and blood vessels. For students of medicine or dentistry, the presented skull model is an excellent educational tool. Its preparation has a number of advantages over other skull models. Museum-quality casting procedures preserve the finest surface details with the appearance and texture of real bone.

Features:

- model divided into individual bones placed in smaller showcases
- everything is in a protective case in the shape of a suitcase for storage and transport
- the set is delivered with a "poster" containing a description of individual elements

Fetal skull model, 17 weeks

Price inquiry: +48 605999769, kontakt@openmedis.pl

Product code: MA02609



This model shows a perfect cast of the fetal skull. At first glance, this model is difficult to distinguish from the real skull and gives an impressive overview of the development of the skull in the uterus.

Size: 3.9 x 3.4 x 3.3 cm

Fetal skull model, 20 weeks

Price inquiry: +48 605999769, kontakt@openmedis.pl

Product code: MA02608



This model shows a perfect cast of the fetal skull. At first glance, this model is difficult to distinguish from the real skull and gives an impressive overview of the development of the skull in the uterus.

Size: 4.7 x 3.5 x 3.8 cm

Fetal skull model, 21 ½ weeks

Price inquiry: +48 605999769, kontakt@openmedis.pl

Product code: MA02607



This model shows a perfect cast of the fetal skull. At first glance, this model is difficult to distinguish from the real skull and gives an impressive overview of the development of the skull in the uterus.

Size: 5.9 x 4.2 x 4.6 cm

Fetal skull model, 29 weeks

Price inquiry: +48 605999769, kontakt@openmedis.pl

Product code: MA02606



This model shows a perfect cast of the fetal skull. At first glance, this model is difficult to distinguish from the real skull and gives an impressive overview of the development of the skull in the uterus.

Size: 7.5 x 5.7 x 5.9 cm

Fetal skull model, 31 weeks

Price inquiry: +48 605999769, kontakt@openmedis.pl

Product code: MA02605



This model shows a perfect cast of the fetal skull. At first glance, this model is difficult to distinguish from the real skull and gives an impressive overview of the development of the skull in the uterus.

Size: 8 x 6.5 x 6.5 cm

Fetal skull model, 32 weeks

Price inquiry: +48 605999769, kontakt@openmedis.pl

Product code: MA02604



This model shows a perfect cast of the fetal skull. At first glance, this model is difficult to distinguish from the real skull and gives an impressive overview of the development of the skull in the uterus.

Size: 9.7 x 7.5 x 7.5 cm

Fetal skull model, 34 weeks

Price inquiry: +48 605999769, kontakt@openmedis.pl

Product code: MA02603



Product information: Fetal skull model, 34 weeks This model shows a perfect cast of the fetal skull. At first glance, this model is difficult to distinguish from the real skull and gives an impressive overview of the development of the skull in the uterus. **Size:** 8.7 x 7.4 x 6.7 cm

Fetal skull model, 40 ½ weeks

Price inquiry: +48 605999769, kontakt@openmedis.pl

Product code: AM02601



This model shows a perfect cast of the fetal skull. At first glance, this model is difficult to distinguish from the real skull and gives an impressive overview of the development of the skull in the uterus.

Size: 11.9 x 9.1 x 8.5 cm

Fetal skull model, 40 weeks

Price inquiry: +48 605999769, kontakt@openmedis.pl

Product code: MA02602



This model shows a perfect cast of the fetal skull. At first glance, this model is difficult to distinguish from the real skull and gives an impressive overview of the development of the skull in the uterus.

Size: 11.4 x 8.7 x 8.6 cm

Child Skull, 1 year old

Price inquiry: +48 605999769, kontakt@openmedis.pl

Product code: MA00465



First class actual cast of a 1 year old child in extraordinary high detail and calvarian cut. Due to the very special production technology even smallest details are reproduced and the model looks and feels almost like a real human skull. Size: 15.3 x 12 x 12 cm

Skull model, 3 parts with skull stand cervical spine

Price inquiry: +48 605999769, kontakt@openmedis.pl

Product code: MA01849



Developing this lifelike reproduction of a human skull we have used the latest technology to digitalize a real human skull and idealized it under the aspects of medical education. This means the skull was adjusted to be anatomically ideal, all anatomical details and structures are present and correspond to anatomical teaching. The skull consists of skull base, skull cap and lower jaw. The teeth correspond with real dentition concerning position and embrasure. The lower jaw is movably mounted and can be removed. The skull cap is aligned with the skull base using metal pins and held by strong magnets. Due to this there is no need for disturbing hooks, no plastic pins that could break and no risk of having a gap between skull cap and skull base. This distinguishes the model from competitor's skulls with plastic pins and disturbing metal hooks. The model corresponds with an average European adult concerning size and proportions. Due to modern production technologies and high production volume this very successful model can be offered at a very reasonable price, so everyone can afford this extraordinary model.

A cervical spine skull stand is included.

Skull with musculature

Price inquiry: +48 605999769, kontakt@openmedis.pl

Product code: MA01035



This fascinating model shows a human skull with the most important head muscles on one half. the mandible is unmovable. The skull cap can be opened and removed.

Size: 18 x 19 x 12 cm, weight: 0.8 kg

Demonstration skull, 14 parts

Price inquiry: +48 605999769, kontakt@openmedis.pl

Product code: MA00461



- A selected quality human skull was chosen for this model, dissectible into 14 parts: A horizontal section of the skull exposes the cranial cavity in which the course of the meningeal vessels, the venous sinuses and the internal carotid artery are indicated in color.
- A sagittal section exposes the structure of the nasal cavity including frontal and sphenoidal sinuses.
- The frontal sinus is further dissected on one side by a bony section, on the other side it is resected in its outline.
- The temporal bone is removable and sectioned into two parts presenting internal ear in full view.
- The mandible is movable and can be taken off.
- The mandible and the maxillae are opened on one side presenting the roots of teeth with dental vessels and nerves reinstated in colour.
- On the other side the maxillae can be opened.
- Size: 20 x 14 x 16 cm,
- weight: 0.7 kg

Skull model, 3-part, with muscle marking

Price inquiry: +48 605999769, kontakt@openmedis.pl

Product code: MA00034



The human skull with marking of muscle insertions and origins. With nomenclature.

Size: 18 x 19 x 12 cm, weight: 0.7 kg

Skull, 5 year old, open jaw

Price inquiry: +48 605999769, kontakt@openmedis.pl

Product code: MA02328



First class actual cast of a 5 year old child in extraordinary high detail. The upper and lower jaw are opened to show teeth eruption.

Model of the middle of the left jaw, 4x enlarged

Price inquiry: +48 605999769, kontakt@openmedis.pl

Product code: MA260722



Didactic anatomical model of the middle of the left jaw made with a 4x magnification. The bones of the left craniofacial side are shown in different colors to facilitate the education process. The model has the possibility of detaching the turbinate to visualize the ethmoid bone. The model is placed on the base.

TMJ model with masticatory muscles, 3-part

Price inquiry: +48 605999769, kontakt@openmedis.pl

Product code: MA01831



The masticatory muscles (masseter muscle, temporal muscle, pterygoideus medialis and lateralis muscles) are represented in the form of elastic bands. Using this model, it is possible to demonstrate the function of the masticatory muscles with closure of the mandible, induction of opening of the mandible and lateral and forward displacement of the mandible. The the skull cap is removable, the mandible is moveable.

Size: 23 x 16.5 x 17 cm, Weight: 0.8 kg

Disarticulated Human Fetal Skull, Full Term

Price inquiry: +48 605999769, kontakt@openmedis.pl

Product code: MA02329



This disarticulated skull is from a full term (10 lunar months) fetus. It was part of a medical examiner's comparative pathology collection before going to the Maxwell Museum and is remarkable in its completeness. It was possible to reproduce every bone, small and large, in precise detail. A perfect specimen for study in forensic anthropology, physical anthropology and anatomy.

Skull stand cervical spine.

Price inquiry: +48 605999769, kontakt@openmedis.pl

Product code: MA01036



- This cervical spine skull stand can be ordered as option for all skulls.
- Since the skull has to be adjusted to the stand it may not be used to equip your existing skull.
- Skull not included, please order separately.