

4-Piece Diabetes Model

Price inquiry: +48 605999769, kontakt@openmedis.pl

Product code: MA01414



Four piece model indicating structures and organs with vascular effects due to diabetes.

Includes sectioned model of Bowman's capsule (kidney), artery, nerve, eye (posterior section).

Full model size without handle: 8.9 x 5.1 x 5.4 cm,

Handle size: 12.55 x 4.6 cm

Demonstration figure correct and wrong lifting

Price inquiry: +48 605999769, kontakt@openmedis.pl

Product code: MA01413



The model simulates the correct and incorrect way of lifting weights for the spine. Ideally suited for demonstration purposes in cabinet conditions.

Size: 23 x 15 x 15 cm

DNA double helix

Price: 126.69 EUR + shipping cost

Product code: MA03999

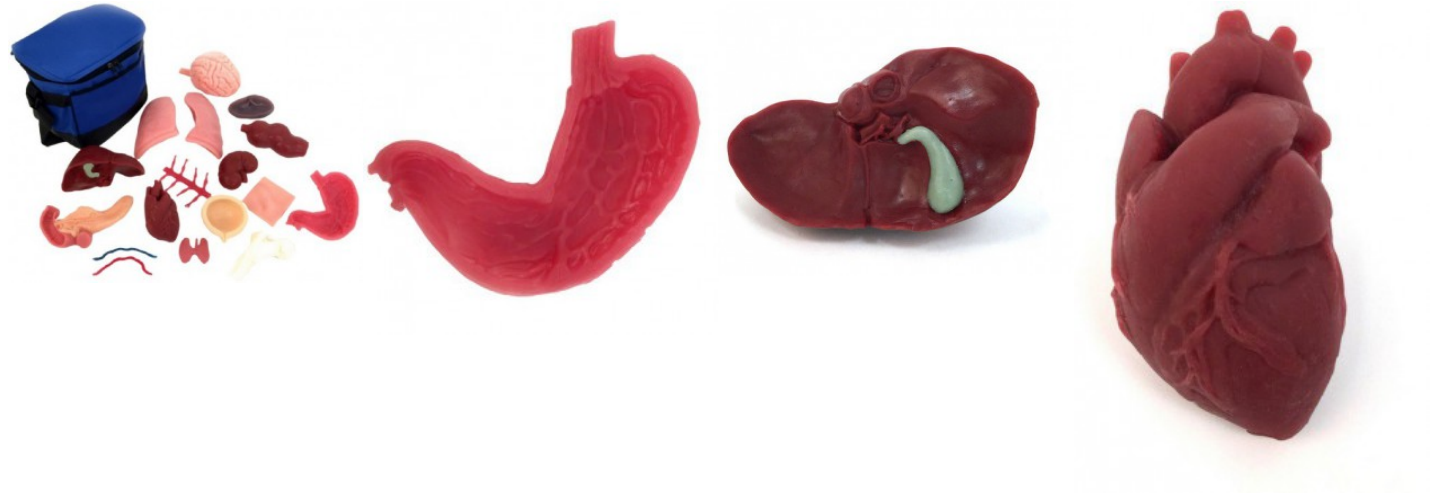


This self assembly kit contains all the blocks needed (stand included) to build a 12 base pairs right handed double helix DNA (B-DNA). Parts are colour coded and have characteristic shapes, with deoxyribose being pentagonal, phosphates cylindrical and nitrogenous bases showing their peculiar pyrimidine or purine structure. Two different central connecting parts depict the 2 and 3 H-bond between Thymine/Adenine and Cytosine/Guanine. The assembled model is important in demonstrating the most peculiar features of double stranded DNA structure and topology.

Anatomical model set, 16 parts

Price inquiry: +48 605999769, kontakt@openmedis.pl

Product code: MA02019



A set of 16 realistic, minimized anatomical models of human organs.

The kit includes the following models:

- Lungs
- Liver / gallbladder
- Thyroid
- Spinal cord
- Artery
- Vein
- Spleen
- Skin
- Brain
- Pancreas / Duodenum
- Stomach
- Heart
- Kidney
- Bladder
- Colon / rectum
- Bone (proximal part of femur).

The kit comes with a protective case.