

SEXLESS TORSO, 12 PARTS

Price inquiry: +48 605999769, kontakt@openmedis.pl

Product code: MA02517



This sexless life-size torso is composed of 12 parts. Accurate in all of its detailing, this model is a useful tool to show the human anatomy

in any classroom. Structures are numbered and identified on the accompanying key-card. The head is removable and divided into two parts, exposing the inner structure of the brain. The neck is dissected through the ventral surface to show muscular, glandular, vascular and neural structures. The thorax and abdomen are completely open, affording an unrestricted view of the internal organs and structures.

Removable components include the following:

- Head, divided into 2 parts, showing a section of the brain and the upper respiratory tract
- Half of the brain, divided along the longitudinal fissure to expose internal structures and vessels
- Right and left lungs, showing the bronchial tree and vasculature
- Heart
- Liver with gallbladder
- Stomach
- Pancreas, duodenum and spleen with vessels and ducts
- Small and large intestine with removable window in caecal region

Mounted on base.

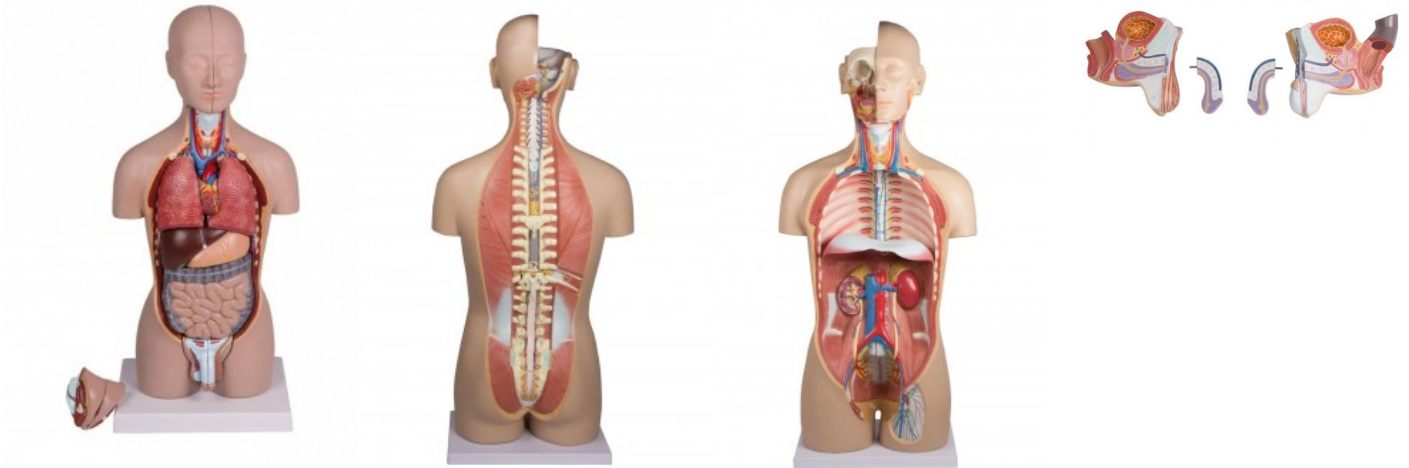
Size: 90 x 33 x 23 cm

Weight: approx. 9.3 kg

Torso with open back, 17-part, dual sex, mini

Price inquiry: +48 605999769, kontakt@openmedis.pl

Product code: MA00727



Reproduction of a human torso in about half life size. Perfect for use as desktop model or for studying the basic anatomy.

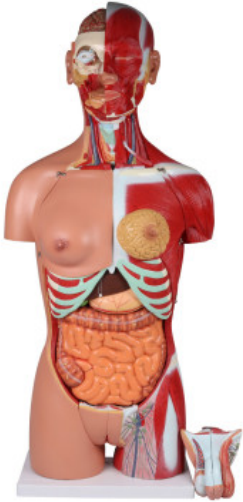
The model consists of the following parts: Basic body, two head halves, one with removable brain, two lung halves, Heart, dissectible in two parts, Stomach, Liver, Intestines with removable caecum cover, Female genital organs, two part, Male genital organs, two part

The model is supplied on base with manual. Size: 19 x 14 x 43 cm

Torso with open back, 28-part, dual sex

Price: 1888.05 EUR + shipping cost

Product code: MA04004



This life size torso with open back is composed of 28 parts and provides an exceptionally realistic reproduction of anatomical structures in their finest detail. All the body systems are represented with full accessibility. The left side exposes all significant superficial and deeper muscles with vessels and bones. The open back shows muscular layers as well as the vertebral column and associated nerve branches. A thoracic vertebra, including a section of spinal cord, is removable for close examination of its anatomical details. The head is open, and the brain is fully exposed on one side. The neck is dissected to expose muscular, neural, vascular, and glandular structures.

Crucial features are numbered and referenced on the accompanying key card. The dissectible male and female urogenital systems are interchangeable. Removable structures include the following:

- eye with optic nerve and extraocular muscles
- half of the brain, divided along the longitudinal fissure, showing internal structures and blood vessels
- trachea
- descending thoracic aorta and esophagus
- right and left lungs (2 parts each), showing the bronchial tree and vasculature
- chest cover
- mammary gland
- liver with gallbladder
- half of one kidney sectioned along the frontal plane, showing the internal structure and vessels
- 2-part heart with clear depiction of atria, ventricles, valves and section of heart wall
- stomach dissected in 2 parts
- pancreas, duodenum and spleen with vessels and ducts
- small and large intestines with removable cover over portion of caecum
- male urogenital systems (4 parts)
- female urogenital system (3 parts) including embryo
- thoracic vertebra (T12) with spinal cord

NG & Tracheostomy Torso

Price: 531.36 EUR + shipping cost

Product code: MA04005

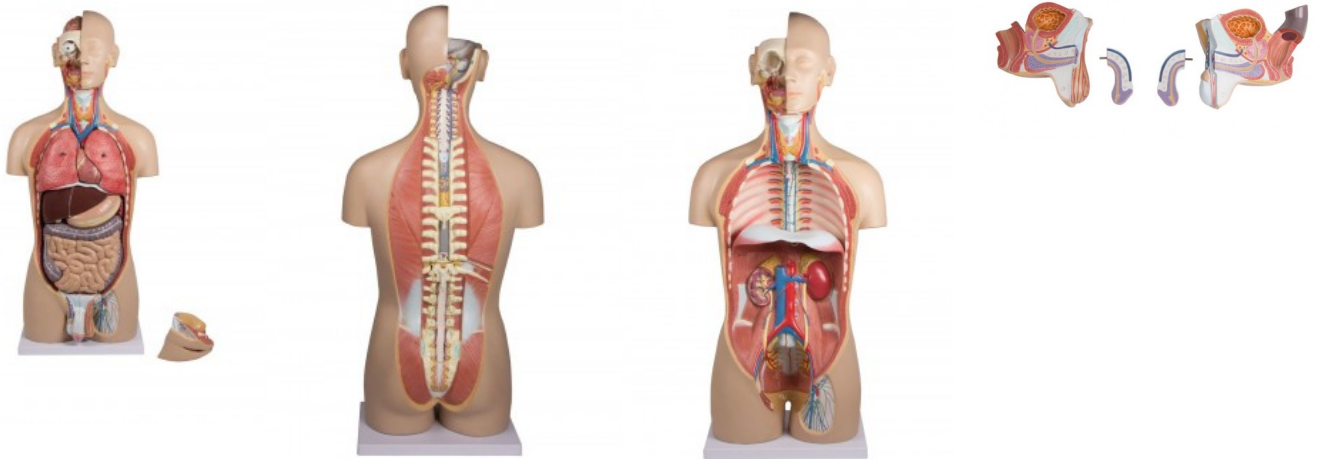


This model shows a cross-section in the sagittal plane. The cross-section runs through the nose, mouth, throat, trachea, esophagus, and stomach. A feeding tube or catheters can be inserted through the nose or mouth into the esophagus and stomach. A tracheostomy is added for the demonstration of endotracheal suctioning.

Torso with organs, 27-part, dual sex

Price inquiry: +48 605999769, kontakt@openmedis.pl

Product code: MA01153



A complete life size torso with open back, composed of 27 parts that provide the most important organs and anatomical structures in the human body. The head is sectioned to expose the skull, brain, mouth and throat region as well as the eye. In addition, the neck is dissected to expose larynx, thyroid and cervical vessels. The thorax and abdomen are completely open; all internal organs can be removed and are partly dismantable. Separate male and female urogenital systems fit interchangeably into the main portion of the torso. The open back exposes muscular layers and the vertebral column, the spinal nerves as well as a removable vertebrae with spinal cord.

The model is dissectable in the following parts:

- torso
- half of the brain
- eye
- left lung, two parts
- right lung, two parts
- heart, two parts
- trachea
- esophagus
- liver
- stomach, two parts
- pancreas, duodenum and spleen
- half of one kidney
- intestines
- ilio-cecal valve
- female urogenital systems, 4 parts
- male urogenital systems, 4 parts
- thoracic vertebrae

Mounted on base.

Size: 88 x 40 x 23 cm, Weight: approx. 10.4 kg

Torso divided into 24 horizontal parts, natural size.

Price inquiry: +48 605999769, kontakt@openmedis.pl

Product code: MA02651



This life-size torso model gives an idea of how computed tomography and magnetic resonance work. Each part can be rotated and removed to take a closer look at the anatomical details shown. All structures such as muscles and nerves are numbered and described in the accompanying instructions.

Size: 90x50x40cm, weight: 12kg