

Dissection model of a pregnant cat

Price inquiry: +48 605999769, kontakt@openmedis.pl

Product code: MZ03783

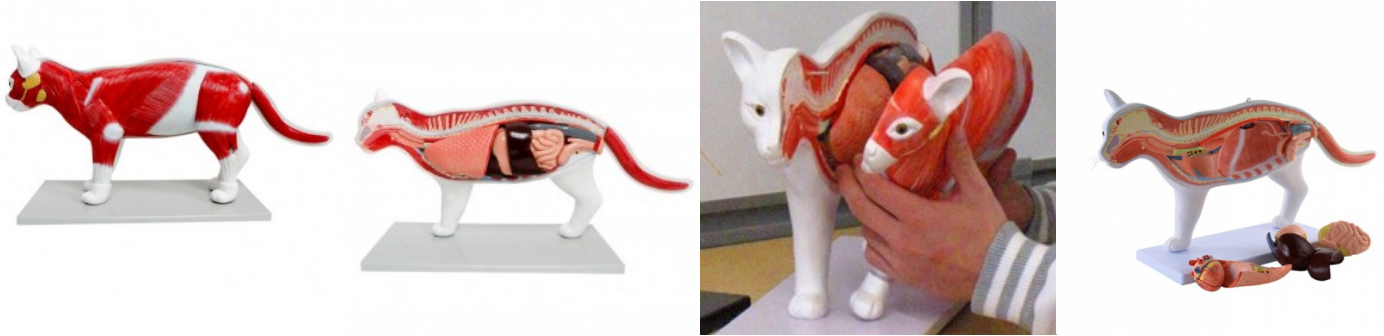


This model of a skinned cat is an excellent addition to the practical preparation and provides a simple visualization of the superficial muscles. This 9-piece model contains removable internal organs such as liver, heart, lungs and stomach. In the right uterine horn, a fetus is depicted. Numbered key included. On basis. Size: 39 x 53 x 17.8 cm, i.e. approximately life-size.

Disassemblable Anatomical Cat Model, 11 parts

Price inquiry: +48 605999769, kontakt@openmedis.pl

Product code: M01674



This anatomical model visualises the muscular and some skeletal structures as well as the internal organs of a cat. It can be removed and partially disassembled in order to provide a malleable representation and excellent assessment of the individual organs.

The Following Organs can be Removed:

- Lungs
- Liver
- Heart (disassemblable)
- Stomach (disassemblable)
- Colon with pancreas
- Rectum with bladder (disassemblable)

More details:

- Disassemblable model of a cat (life-size)
- Some organs can be removed and taken apart
- With removable tail
- Cat dimensions (L x W x H): **approx. 62 x 13 x 29 cm** (mounted)
- Base dimensions (L x W x H): **approx. 43 x 19.5 x 1.5 cm**

Cow model - OpenMedis, 15 parts, 1/3 life size.

Price inquiry: +48 605999769, kontakt@openmedis.pl

Product code: M01723



Anatomical **Model of a cow** with removable organs. This high quality anatomical model shows a female cattle on a stand in 1/3 life size. One side of our **anatomical cow model** presents the external anatomy of the animal, while the other presents the muscular system. Our **bovine model** is divided into two parts in the sagittal plane, which allows to present the internal anatomy of gastrointestinal, reproductive and excretory systems and udder.

The bovine model can be disassembled into 15 pieces, including:

- one limb,
- heart (2 pcs),
- lung, small and large intestines,
- stomach (3 pcs),
- kidney,
- uterus with an ovary (2 pcs),
- liver,
- tail,
- the half with the muscular system,
- the half with the external anatomy.

When the internal organs are taken out, the **cow model** presents the muscular system of the thorax and the abdomen.

Specifications:

- weight: ca. 12 kg
- width: 28 cm
- length: 93 cm
- height: 49 cm
- 1/3 life size
- 15 parts removable

Application of the cow model

The **educational cow model** is an ideal equipment for veterinary laboratories and clinical skills laboratories. Perfect for learning the anatomy and topography of the organs of female breeding cattle. **The bovine model** is dedicated to Universities of Life Sciences, Agricultural Universities, Veterinary Technicians and Agricultural Education Centers. All veterinary models in our offer are designed to make the veterinary education process more attractive and to help achieve the expected educational outcomes.

Additional information:

- The product is available only on request
- delivery time: ca. 4 - 6 weeks



- The model can be produced in different scales/sizes

Horse (mare) model, 16 parts, 1/3 life size

Price inquiry: +48 605999769, kontakt@openmedis.pl

Product code: MZ02519



The model shows a mare 1/3 of its life size. It is intended for teaching purposes and is mounted on a base with wheels. The model can be divided into two parts in the sagittal plane: one side shows the external anatomy and the other side shows the muscles. The left interior shows the chest and abdominal cavity with interchangeable organs. The right side shows the main blood vessels. Half of the head can be separated from the muscle half.

The model can be disassembled into 16 parts:

- right side of the head (outside)
- left side of the head (muscles)
- right side of the hull (outside)
- left side of the torso (muscles)
- left front leg
- right gluteus muscle
- Heart (2 parts)
- Left lung
- Stomach (2 parts)
- Small intestine
- Colon
- liver
- Left kidney
- spleen

*You can order a model in any size

Domestic Hen on base, 8 parts, life size

Price inquiry: +48 605999769, kontakt@openmedis.pl

Product code: MZ01896



Didactic model of a house hen on the basis, made in 1: 1 scale. Intended for educational purposes for students. It has the ability to divide into 8 separate parts of the body and organs. The model presents the muscular structure of the house hen on one side, while the other shows the external structure. It is possible to divide the whole model in the middle section, thanks to which it presents the internal structure, including the digestive and genital system.

Specification:

- Weight: approx. 2.5kg

Sheep model, 12 parts, 2/3 life size

Price inquiry: +48 605999769, kontakt@openmedis.pl

Product code: MZ02301



A model of a sheep on the base, approx. 2/3 natural size. The model is installed on a base with wheels, and can be divided in two parts along its sagittal plane. The right part shows the outer part of the animal, and the left part presents body and limb muscles.

When two halves are separated, the left side shows the chest and the abdominal cavity with detachable organs (a lung, a kidney), and the right side of the model shows main blood vessels, the heart, the abdominal cavity wall with detachable organs, including: a stomach, a liver, a spleen, a small intestine and a uterus. The model can be divided into 12 parts.

Removable parts:

- 2 body halves, divisible in the sagittal section
- stomach (2 pieces),
- small and large intestine
- heart (2 parts)
- liver with spleen
- one limb
- lung,
- 2-part uterus (reproductive system),
- rectum, bladder, excretory system

Specification:

- Size: approx. 85x36x69 cm,
- Weight: approx. 15 kg,
- Fully colorful,
- Model on the base with wheels.

German Shepherd (female) model, 2/3 life size

Price inquiry: +48 605999769, kontakt@openmedis.pl

Product code: MZ02532



A model of a female German Shepherd Dog made on a scale of about 2/3 of its natural dimensions. The model can be divided in the sagittal plane into two halves. One side of the model shows the animal's muscles in detail, while the other shows the hair. The whole is assembled on a base with wheels. The model can be divided into a total of 11 parts: lung, stomach (2 parts), heart (2 parts), left forelimb, tail, liver, intestines, 1 half (muscle), 1 half (outer part / hair)

Didactical Pig Model, 20 parts, 1/2 life size

Price inquiry: +48 605999769, kontakt@openmedis.pl

Product code: MZ02302



A model of a breeding pig (sow), 1/2 natural size. Intended for teaching purposes, for pupils and students. The model is installed on a base with wheels, and can be divided in two parts along its sagittal plane. The right part shows the outer skin of the animal, and the left part presents body and limb muscles.

When two halves are separated, the left side shows the chest and the abdominal cavity with detachable organs (a lung, a kidney, and a large intestine), and the right side of the model shows main blood vessels, the heart, the abdominal cavity wall with detachable organs, including: a stomach, a liver, a spleen, a kidney with an adrenal gland, a small intestine and a uterus. A half of the model's head can also be detached from the half showing muscles. The model can be divided into 20 parts.

Removable parts:

- right half of the body
- left half of the body
- half of the head
- ear cartilage
- large intestine
- small intestine
- left front leg
- liver (2-parts)
- heart (2-parts)
- kidney
- adrenal gland
- spleen
- lung (2 parts)
- tail
- stomach (2 parts)
- parotid gland
- half of the uterus

Dimensions: approx. 28x 102 x 50 cm, weight approx. 19kg