

Interlocking Porcine Model

Price inquiry: +48 605999769, kontakt@openmedis.pl

Product code: MZ02661



It is a robust model for students to learn procedures such as injection and insemination. This trainer allows you to attach additional modules. Thanks to the specific structure of interlocking wooden parts, it will be possible in the future to add new, newer modules.

Small intestine of the pig

Price inquiry: +48 605999769, kontakt@openmedis.pl

Product code: MZ02379



The two-part model of the small intestine of a pig. It shows all the important anatomical structures.

* possible model realization in any scale

Large intestine of the pig

Price inquiry: +48 605999769, kontakt@openmedis.pl

Product code: MZ02380



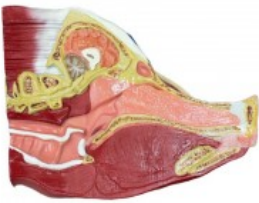
A three-fold enlarged, one-piece model of the pig colon. It shows all the important anatomical structure.

* possible model realization in any scale

Half of the pig head

Price inquiry: +48 605999769, kontakt@openmedis.pl

Product code: MZ02387



A model of the left side of a pig's head, reduced to three times. It shows all the important anatomical structures.

* possible model realization in any scale

Pig uterus

Price inquiry: +48 605999769, kontakt@openmedis.pl

Product code: MZ02378



A three-fold enlarged, two-part model of a pig uterus. It shows all the important anatomical structures.

* possible model realization in any scale

Pig skull, replica

Price inquiry: +48 605999769, kontakt@openmedis.pl

Product code: MZ02007



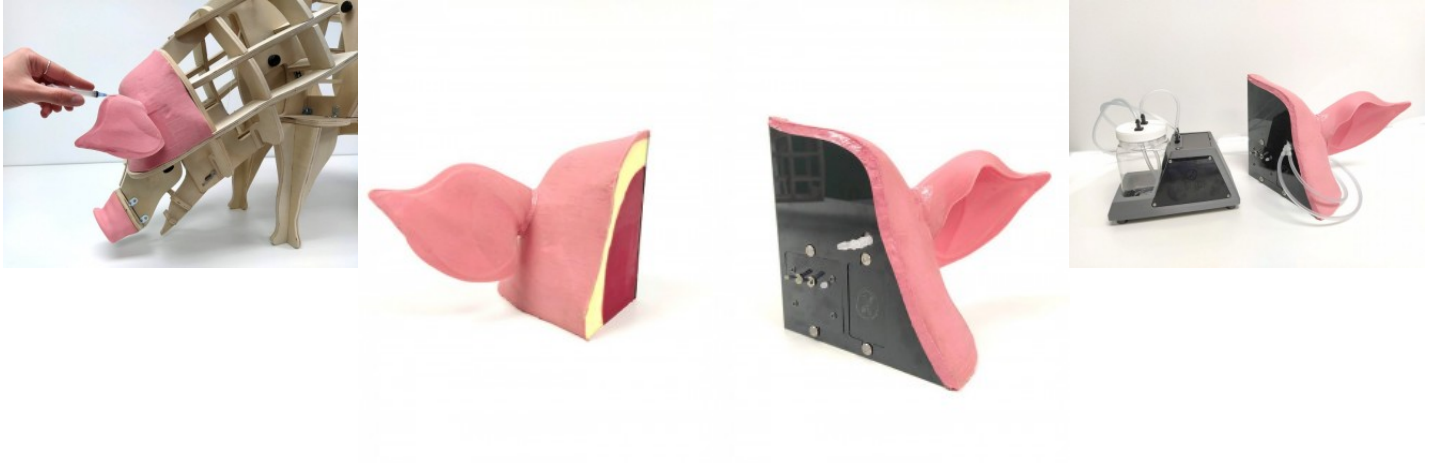
Detailed skull model of a domestic pig made of synthetic material similar to bone.

- 1: 1 scale.
- The model consists of two parts.
- Length 36cm.

Model for learning intramuscular injections and collecting samples from the ear veins of a pig

Price inquiry: +48 605999769, kontakt@openmedis.pl

Product code: MZ02663



When the correct puncture point is reached, the buzzer sounds and the LED turns green. There is also an option to turn off the buzzer during training, when the student feels they are in the right injection site, they can turn it on to see if they are right.

This anatomically correct pig ear model has a tactile silicone lateral ear vein that runs through the ear and connects to the blood pump. The ear can be folded back to expose the vein for insertion of the needle. The model can be used as one of the modules for the overall model (MZ02661)

A model for learning pig ear tagging and harnessing

Price inquiry: +48 605999769, kontakt@openmedis.pl

Product code: MZ02666



It is one of the modules for the overall pig model (MZ02661). It is used to learn how to pierce and tame a pig. It is intended for students.

The mouth is made of silicone. This model can be purchased separately.



Model for learning to collect blood from the ear of a pig

Price inquiry: +48 605999769, kontakt@openmedis.pl

Product code: MZ02664



This anatomically correct pig ear model has a tactile silicone lateral ear vein that runs through the ear and connects to the blood pump. The ear can be folded back to expose the vein for insertion of the needle.

Pig Uterus Model

Price inquiry: +48 605999769, kontakt@openmedis.pl

Product code: MZ01892



Life-size model of the pig uterus on the base.

Additional information:

- dimensions: approx. 35x54x6,5cm
- Weight: approx. 4.1kg

Pig kidney model

Price inquiry: +48 605999769, kontakt@openmedis.pl

Product code: MZ02411



Domestic pig kidney model. It shows the internal structures and main vessels

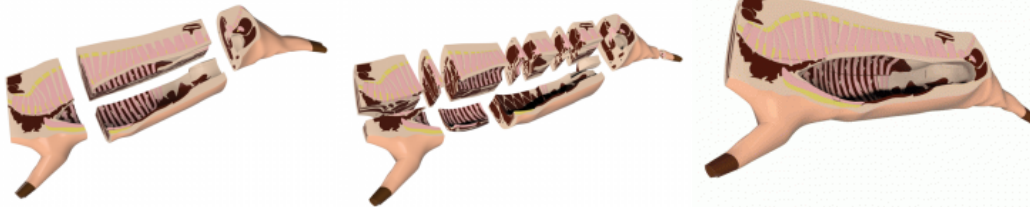
Specification:

- dimensions: 27x19x10cm
- weights: approx. 1kg

Butcher Pork Cut Models

Price inquiry: +48 605999769, kontakt@openmedis.pl

Product code: MZ03097



Our **Butcher Pork Cut Models** include 13 life-like magnetic models of pork cuts to help students learn to identify, locate, and prepare each piece. This pork carcass model, which is about half the size of a real pig, features realistic bone, muscle and tendon definition.

Contents:

- 13 individual pork cuts,
- Shoulder (2 pieces),
- Loin (6 pieces),
- Belly/Side (3 pieces),
- Leg (2 pieces),
- Quick start guide,
- Downloadable curriculum, presentation slides, and poster,
- 1-year limited warranty.

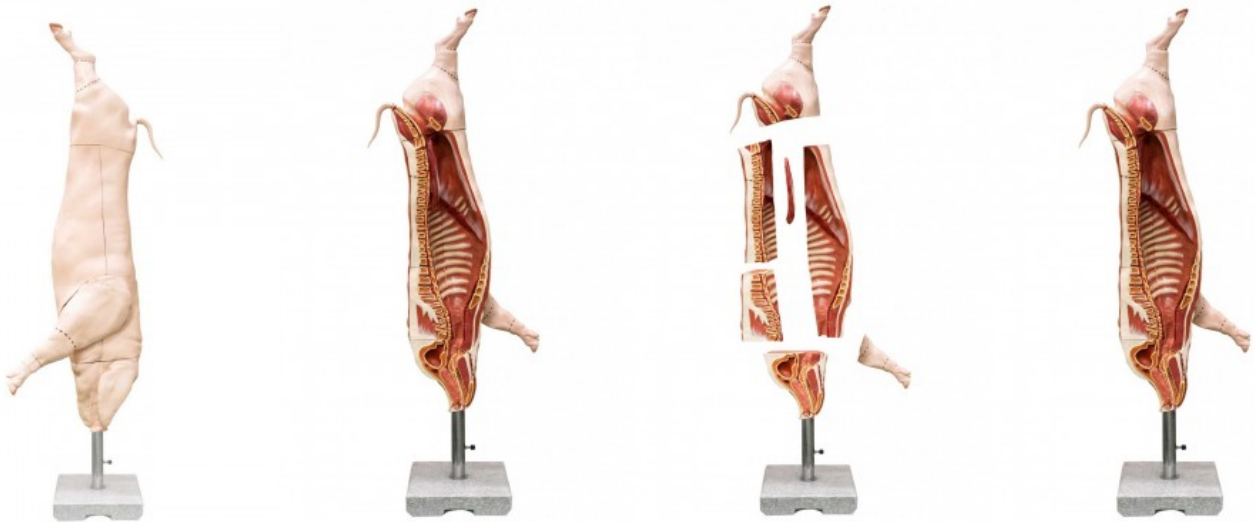
Specifications:

- Dimensions: 65 x 66 x 25 cm
- Weight: 11 kg

Pork (pig) carcass model, natural size

Price inquiry: +48 605999769, kontakt@openmedis.pl

Product code: MZ02408



A natural size model showing a pork half-car carcass on a base that ensures the stabilization of the model. The individual parts of the model are divided according to the DLG classification - "simplified DLG cutting method". The model is divided into 7 parts such as:

- head
- shoulder with shank and foot
- chine
- tenderloin
- ham with shank and foot
- loin with champ and fatback
- porkbelly with ribs and brisket

Additional information:

- It is possible to make the model in various scales (individual valuation): scale 1: 1, 1: 2, 1: 3 etc.
- It is possible to adjust the model specification to the needs of a given project.

Specification:

- height approx. 150 cm
- Weight: approx. 10 kg (+ -10%)
- Connections of individual parts of the model by means of magnets, latches and other methods ensuring the stabilization of the model and its stable folding.

Dissected Fetal Pig

Price inquiry: +48 605999769, kontakt@openmedis.pl

Product code: MZ03099



The model shows a dissectional pig fetus.

Contents:

- Dissected Fetal Pig Model on base
- 9 removable parts
- Curriculum
- 1-year limited warranty

Specifications:

- Product Dimensions: 48 x 34 x 14 cm
- Product Weight: 3.5 kg

Pig heart model

Price inquiry: +48 605999769, kontakt@openmedis.pl

Product code: MZ02381



A three times smaller model of a pig's heart. It is divided into two parts. It shows all the important anatomical structures.

* possible model realization in any scale

Domestic Pig model, 18 parts

Price inquiry: +48 605999769, kontakt@openmedis.pl

Product code: MZ01868



A domestic pig model on the base. The scale is approximately 1/2 of the natural size. It has the possibility of spreading into two halves in the middle line, thanks to which it is possible to present the internal structure. It has 17 detachable parts of the body and organs. In total, the model will spread into 18 body parts and organs. The model is fully colored. One side of the model shows the animal's (skin's) external appearance while the other superficial muscles and the internal structure, including the digestive and reproductive system. The whole is placed on the base. Additionally, disconnecting the organs enables the presentation of the chest structure and the abdominal wall.

The model has detachable parts, among others: liver, half lung, heart, one limb, tail, half of the head, small intestine, large intestine, half of the body, spleen.

Additional information:

- **Dimensions:** approx. 30x112x54cm,
- **Weight:** approx. 23.5 kg,
- Instruction

Pig model for learning insemination

Price inquiry: +48 605999769, kontakt@openmedis.pl

Product code: MZ02665



It is one of the modules for the overall pig model (MZ02661). It is used to teach sow insemination. It is intended for students.

When you hit the right place with the gear, you hear a "clang", indicating that you have successfully completed the exercise. The model is completely anatomically correct.

Pig model for learning to collect blood from the neck

Price inquiry: +48 605999769, kontakt@openmedis.pl

Product code: MZ02667



It is one of the modules for the overall pig model (MZ02661). It is used to teach how to draw blood from a pig's neck. It is intended for students. This model is completely anatomically correct, and the materials from which it was made are to ensure the most realistic feeling during testing. The model works with a blood pump, which is designed to maintain its continuous, pulsating flow.

Didactical Pig Model, 20 parts, 1/2 life size

Price inquiry: +48 605999769, kontakt@openmedis.pl

Product code: MZ02302



A model of a breeding pig (sow), 1/2 natural size. Intended for teaching purposes, for pupils and students. The model is installed on a base with wheels, and can be divided in two parts along its sagittal plane. The right part shows the outer skin of the animal, and the left part presents body and limb muscles.

When two halves are separated, the left side shows the chest and the abdominal cavity with detachable organs (a lung, a kidney, and a large intestine), and the right side of the model shows main blood vessels, the heart, the abdominal cavity wall with detachable organs, including: a stomach, a liver, a spleen, a kidney with an adrenal gland, a small intestine and a uterus. A half of the model's head can also be detached from the half showing muscles. The model can be divided into 20 parts.

Removable parts:

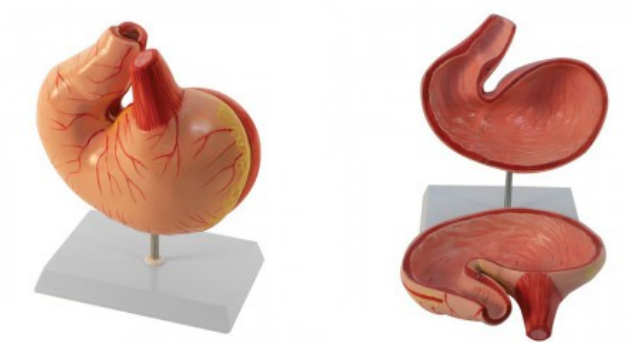
- right half of the body
- left half of the body
- half of the head
- ear cartilage
- large intestine
- small intestine
- left front leg
- liver (2-parts)
- heart (2-parts)
- kidney
- adrenal gland
- spleen
- lung (2 parts)
- tail
- stomach (2 parts)
- parotid gland
- half of the uterus

Dimensions: approx. 28x 102 x 50 cm, weight approx. 19kg

Pig stomach model, 2 parts

Price inquiry: +48 605999769, kontakt@openmedis.pl

Product code: MZ01890



A realistic model of a pig's stomach. It is divided into two parts, each of which represents the internal and external structures of the pig's stomach structure.

Specification:

- Dimensions: approx. 28x18x38cm
- Weight: approx. 1,1-1,5kg

Pig stomach model, 2 parts, 1/3 natural size

Price inquiry: +48 605999769, kontakt@openmedis.pl

Product code: MZ02384



A three times smaller, two-piece model of a cow stomach. It shows all the important anatomical structures. It can be separated in the middle to show the internal structure.

Application:

- Learning the anatomical structure of a pig's stomach veterinary teaching veterinary medicine
- Additional information: Possibility to make a model in 1: 1 scale
- The possibility of making and adapting the model to a specific specification

Front leg of the pig

Price inquiry: +48 605999769, kontakt@openmedis.pl

Product code: MZ02386



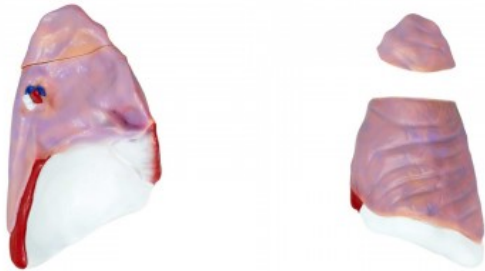
A three times smaller model of the pig's front leg It shows all the important anatomical structures.

* possible model realization in any scale

Lung of the pig

Price inquiry: +48 605999769, kontakt@openmedis.pl

Product code: MZ02383



A three times smaller, two-piece model of a cow's lung. It shows all the important anatomical structures.

* possible model realization in any scale

Pig's saliva

Price inquiry: +48 605999769, kontakt@openmedis.pl

Product code: MZ02382



A three times smaller, one-piece model of a cow's salivary gland. It shows all the important anatomical structures.

* possible model realization in any scale

Pig artificial insemination simulator / Swine Breeder

Price inquiry: +48 605999769, kontakt@openmedis.pl

Product code: MZ01999



Artificial Insemination (AI) is already a common procedure on pig farms, therefore the presented trainer is a practical scientific aid for future breeders, zootechnicians, veterinarians and veterinary technicians.

Product description:

- a life-size simulator for learning and training artificial insemination of sows
- anatomically correct model with reproductive system
- enables learning of proper techniques of artificial insemination
- solid, compact, lightweight design with easy portability
- it is possible to sit on the simulator in order to carry out a test of mounting a sow to check the tolerance reflex or standing heat detection
- in addition, the trainer can be used to simulate farrowing piglets and train on normal and abnormal delivery positions

Set contains:

- Pig insemination simulator
- AI catheter / insemination gun
- Spiral reproductive tract (removeable)
- Transparent reproductive tract (removeable)
- Farrowing reproductive tract (removeable)
- 2 piglets

Castration piglet

Price inquiry: +48 605999769, kontakt@openmedis.pl

Product code: MZ03894



With its exchangeable training modules, enables the practical simulation of all invasive procedures in the first week of a piglet's life. Not only visually but also haptically, it conveys the impression of a lifelike piglet with its skin-like surface and a weight of 2.5 kg. Thanks to the integrated hip and shoulder joints, can be fixed in a wide variety of positions and handling can be simulated flexibly. Surgical castration can be performed lifelike on the integrated castration module. After a surgical incision through the outer skin, the testicles can be moved forward, the spermatic cords can be cut and the wound can be treated. In addition to castration, the testicle module also enables controlled training of tail docking. After successful training, the module can be exchanged with only one hand movement and is ready for the next application. The training of injections, for example in the context of iron injection, can be simulated on the integrated module. After repeated use, the module can also be easily replaced. dimensions: ca. 23 x 40 x 10 cm weight: ca. 2.5 kg Includes:

- Piglet simulator
- 1 x module
- 3 x Castration module



Pig skeleton (*Sus scrofa domesticus*), f, disarticulated

Price inquiry: +48 605999769, kontakt@openmedis.pl

Product code: M01712

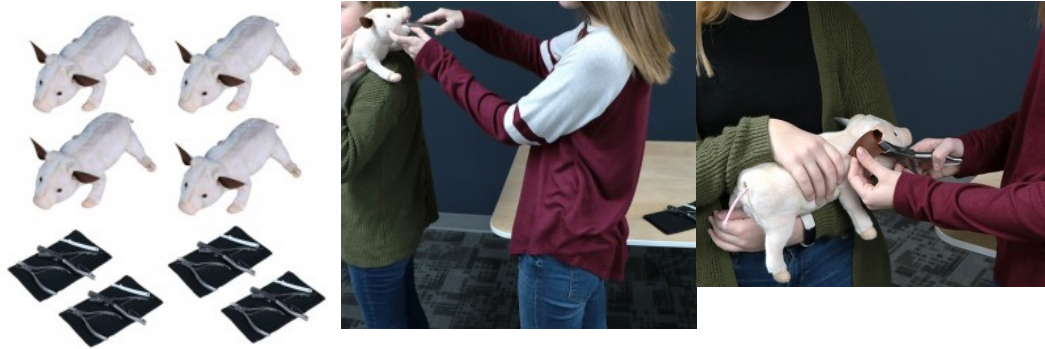


Complete and non-assembled skeleton bones without pre-drilling. Ideal for demonstrating the typical bone structure and anatomy. Small bones can be loose. Does not include building instructions.

Piglet litter simulator

Price inquiry: +48 605999769, kontakt@openmedis.pl

Product code: MZ02396



The kit allows you to acquire practical skills and techniques for dealing with a litter of piglets. These include tooth clipping, castration, tail clipping, and ear clipping. Included are four sets of processing tools and consumables.

Features:

- Four realistic piglet simulators
- Hands-on practice clipping teeth, castrating, docking tails and notching ears
- Up to 500 practice sessions/kit
- Additional replacement parts available

Contents:

Each kit includes:

- 4 piglet simulators
- 4 teeth and tail snippers
- 4 ear notching tools
- 4 plastic scalpels
- Supplies for practicing clipping teeth, castrating, docking tails and notching ears
- 1-year limited warranty

Liver of the pig

Price inquiry: +48 605999769, kontakt@openmedis.pl

Product code: MZ02385



A three-fold, two-piece model of a pig liver. It shows all the important anatomical structures.

* possible model realization in any scale

Advanced piglet simulator

Price inquiry: +48 605999769, kontakt@openmedis.pl

Product code: MZ02659



The advanced piglet simulator allows the training of many different invasive procedures - from blood collection from the vena cava to intracardiac injections.

With its interchangeable training modules, our piglet enables practical simulation of basic invasive procedures on the runner pig. With its skin-like surface and a weight of 9 kg, it conveys the impression of a lifelike pig not only visually but also haptically. The integrated hip and shoulder joints allow to be fixed in different positions and simulate handling during various procedures.

Blood sampling and intracardiac injection can be trained lifelike with the exchangeable modules. Blood sampling from the vena cava can be performed with conventional cannula as well as with vacuum systems on the i.v. module in the choke channel. The i.c. module has, in addition to a puncturable ventricle, palpable ribs so that the correct puncture site can be localized via anatomical points. An integrated tubing system connects the i.v. module and the i.c. module to the blood reservoir and allows aspiration of blood when the cannula is placed correctly.

Training of an i.m. injection into the neck muscles can be simulated on the integrated i.m. module.

Surgical castration can be performed step by step at the integrated castration module. After incision through the external skin, the testes can be located, advanced and castrated covered or uncovered. Testicles, epididymis and spermatic cords are represented in detail.

After successful application, the modules can be exchanged in just a few steps.

Includes:

- Weaner simulator
- 1 x i.m. module
- 1 x castration module
- 1 x i.c. module
- 1 x i.v. module (V. cava)
- Blood bag
- dimensions: ca. 71 x 42 x 13 cm L x H x W
- weight: ca. 9kg
- Article no. #007-020-00