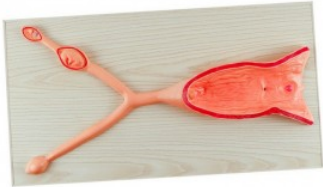


Dog Uterus Model

Price inquiry: +48 605999769, kontakt@openmedis.pl

Product code: MZ02618

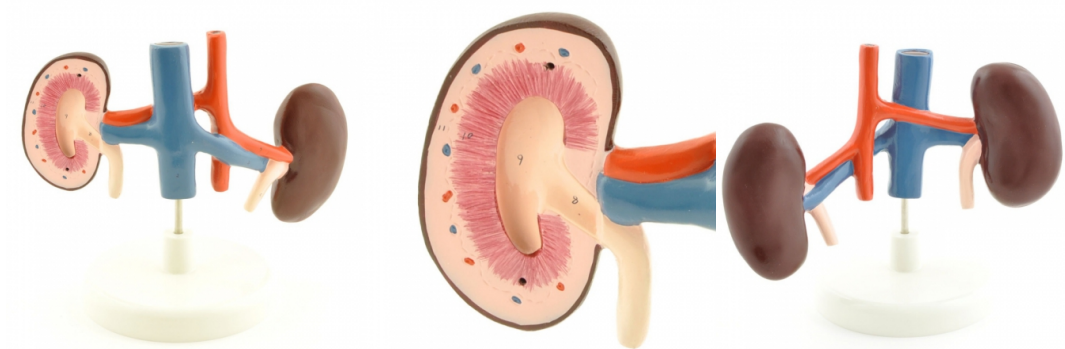


The Dog Uterus Model is an enlarged relief model, showing the structures of the dog uterus with full-color details. It comes mounted on a white base and includes a teacher guide and student worksheet. Dimensions: 64x35x3cm, weight: 4,5kg

Dog Kidney Model with blood vessels

Price inquiry: +48 605999769, kontakt@openmedis.pl

Product code: M01669



This detailed and **partially disassemblable** model of a dog's kidneys also shows segments of the blood vessels such as the **renal artery** (Arteria renalis), the **renal vein** (Vena renalis) and the **ureter**. It can be disassembled to allow for the study of the organ's internal structure.

- Detailed model of two dog kidneys (1 kidney can be opened)
- Shows sections of the renal artery and vein and the ureter
- Mounted on a base
- Dimensions (L x H x W): **22 x 22 x 15 cm**
- **Weight: 0,7 kg**

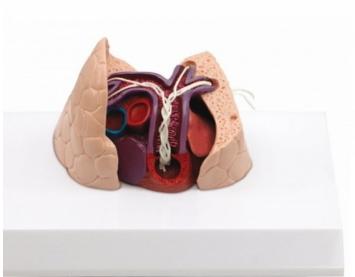
Some visible structures on the Dog Kidney Model include:

- Renal pelvis
- Ureter
- Renal capsule
- Renal medulla
- Renal poles
- Renal artery
- Renal vein

Canine heart and lung with heartworm

Price inquiry: +48 605999769, kontakt@openmedis.pl

Product code: M01291

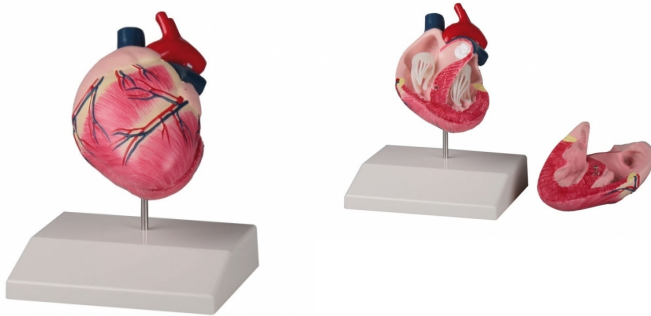


Average canine (dog) heart and lungs infested with heart worms (*dirofilaria immitis*). Cut away view demonstrates structures in the heart (right ventricle, pulmonary trunk, pulmonary arteries and lungs) where adult-stage heart worms are normally found. With educational card.

Canine heart, life size

Price inquiry: +48 605999769, kontakt@openmedis.pl

Product code: M01362

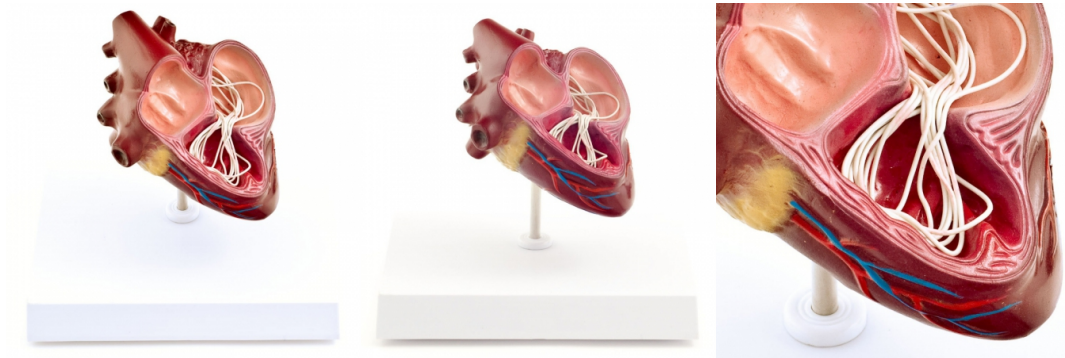


This model of the heart of an average size dog can be dissected into two parts. After removing the front heart wall the model shows ventricles, valves and atriums. On stand.

Canine Heartworm Model

Price inquiry: +48 605999769, kontakt@openmedis.pl

Product code: M01672



This anatomical model depicts an average-sized dog's heart that is infected with *Dirofilaria immitis*. The cut-away model shows the structures of the heart where adult heartworms can usually be found in the event of severe infestations.

The heart model can be used as a topical decoration in a veterinary clinic and as an informational object for vulnerable or infected patients.

Illustrated Details:

- Blood vessels
- Fat
- 3 sections with heartworms

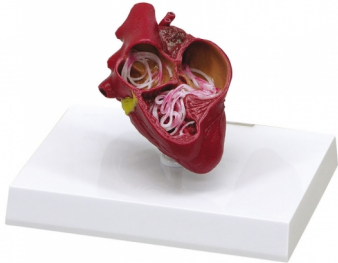
More details:

- Dimensions (L x H x W): **16,5 x 13 x 20 cm**
- **Weight: 0,43 kg**
- Mounted with a stand on a white plastic base
- Can be used to explain dirofilariosis

Canine Heart with Heartworm

Price inquiry: +48 605999769, kontakt@openmedis.pl

Product code: M01341



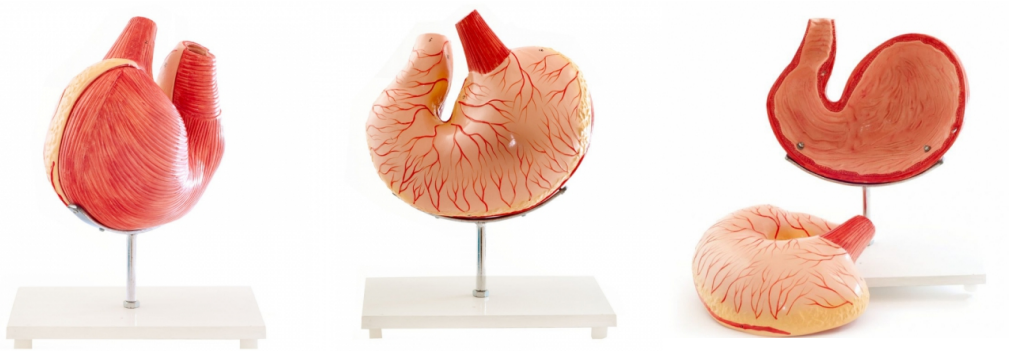
Cut-away view of an average size dog heart with improved decoration of arteries, fat and 3 sections of heartworm parasites.

Size: 7.5 x 9 x 11 cm

Canine stomach model

Price inquiry: +48 605999769, kontakt@openmedis.pl

Product code: M01670



This anatomical model of a dog's stomach can be disassembled into two parts, and clearly illustrates the anatomy and inner composition of a dog's stomach. The canine stomach model is mounted on a white wooden base.

Veterinarians often use the canine stomach model to explain the disorders of a dog's stomach to pet owners and to clarify anatomical relationships.

- 2 parts, can be disassembled
- Shows the cross section of an average size dog stomach
- Mounted on a white wooden base
- Size (L x H x W): **20 x 30 x 15 cm**
- **Weight: 1,00 kg**