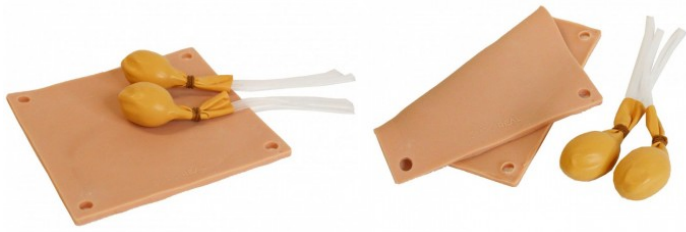


Canine Neuter Simulator Replacement Parts

Price inquiry: +48 605999769, kontakt@openmedis.pl

Product code: MZ03770



Replacement Skin and Testicles for the Canine Neuter Simulator

Dental dog head model

Price inquiry: +48 605999769, kontakt@openmedis.pl

Product code: MZ02636



Anatomically correct training model for teaching dental techniques and intubation in medium-sized dogs.

Our dog dental training model includes a full set of resin replacement teeth with soft silicone gums. The teeth include all 42 teeth (incisors, canines, premolars and molars). Each section is easily replaced with a screwdriver.

The model has an open jaw and a flexible silicone tongue, epiglottis, tracheal and esophageal entrances for teaching intubation techniques.

Dog phantom for thoracentesis training

Price inquiry: +48 605999769, kontakt@openmedis.pl

Product code: M01398

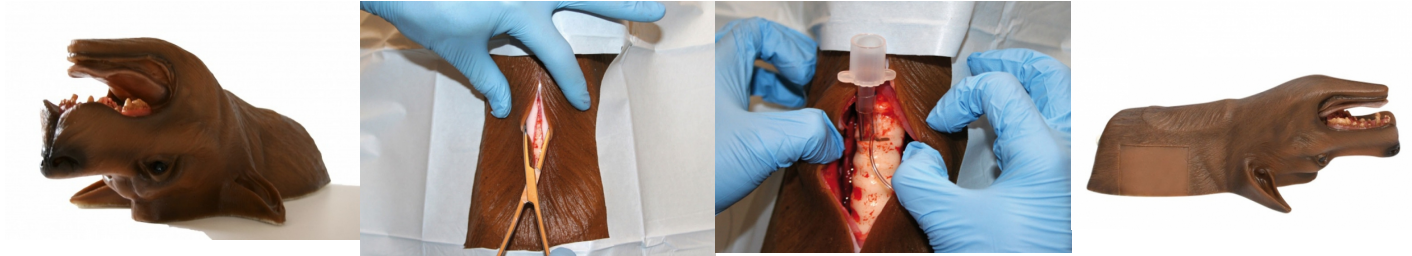


A realistic life-size mannequin dog. It allows you to improve the techniques of proper chest placement and drainage, as well as thoracocentesis, or pleural puncture. Benches to use, provides high quality and realism during education. The phantom has anatomical landmarks for easy learning and handling.

Canine Tracheostomy Model

Price inquiry: +48 605999769, kontakt@openmedis.pl

Product code: M01389



Trainer showing the head of a dog with neck, intended for learning tracheotomy and cricothyrotomy.

Notches can be made on skin coatings, tracheal rings ring-disc membrane. Phantom has three sets of exchangeable tracheas and skin and one artificial lung. The model has no artificial blood.

Canine Dental / Surgical Model

Price inquiry: +48 605999769, kontakt@openmedis.pl

Product code: M01682



Dental model of a dog's head for training of surgical and dental techniques. Has a wide range of training opportunities.

Main features:

- Model of real size
- Realism of performance
- Artificial teeth and bones surrounded by soft rubber, supplemented with periodontium ligaments and periosteum.
- It enables practical exercises in blocking nerves, undermining, lifting and removing each tooth, as well as the tongue, epiglottis, esophagus and trachea, through which it is possible to perform simulation of intubation
- The upper and lower jaws are adapted for easy removal, maneuvering and extraction
- X-ray imaging of the jaw model before and after extraction (tooth extraction)

Set contains:

- SURGICAL AND STOMATOLOGICAL SURGERY model of canine head in black or brown.
- Three removable X-ray extraction kits.
- Fitted foam case for carrying and storage.
- Holder and arm fixing the model to the table in the set.

Dogs castration - training model

Price inquiry: +48 605999769, kontakt@openmedis.pl

Product code: MZ03772



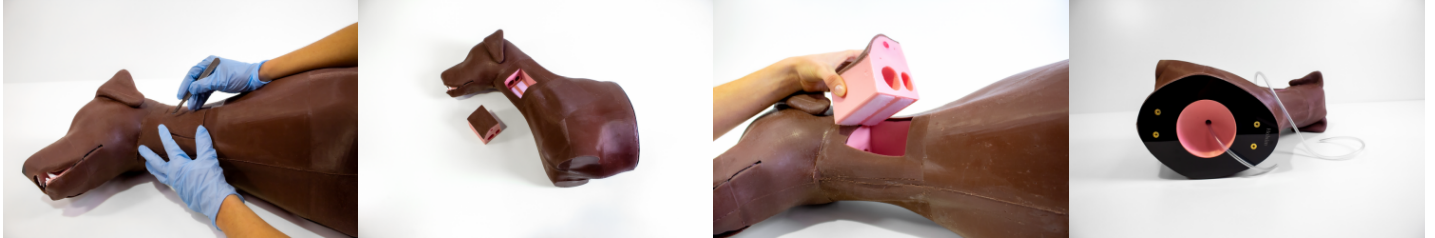
This is a simulation model for perfecting castration surgery in dogs. It is possible to simulate skin incision, fascia incision, ligation of spermatic cord and arteries and veins, removal of testicles and suturing. Both prescrotal and scrotal incision is possible. The weight is about 345g and the size is 11cm in length, 11cm in width and 8cm in height.

The model is based on a cartridge where only the contents can be replaced while the body remains the same, resulting in cost savings.

Dog dummy for learning to insert a food probe into the esophagus

Price inquiry: +48 605999769, kontakt@openmedis.pl

Product code: MZ02556



The trainer helps in learning the location of the incision site on the dog's neck and how to move the tools properly through the mouth and airways to properly apply the feeding tube. The model includes a functional jaw, precise anatomical features of the oropharynx (tongue, epiglottis, soft palate, etc.) and a surgical inlay with a jugular vein. The surgical insert is a replaceable part that can be cut and sewn repeatedly. It also allows the jugular vein to be palpated to improve operational skills. There is a hole for the abdomen on the back of the model, which indicates the correct placement of the tube. The model is equipped with connection points on the rear so that a mounting bracket can be attached if necessary.

Canine Positioning Manikin

Price inquiry: +48 605999769, kontakt@openmedis.pl

Product code: M01394



A life-size phantom of a large dog with mobile limbs with realistic resistance in the joints, a flexible tongue, a realistic jaw with teeth and a movable lower jaw. The phantom is designed to improve the skills of proper "positoning" of the animal depending on the type of treatment performed, e.g .:

abdominal surgery, X-rays, sterilization, castration, advanced spine stabilization position on the back and others.

Students learn how to position dogs for

- abdominal surgery,
- x-ray,
- spay and neuter,
- advanced spinal stabilization,
- spinal recumbency and more.

The phantom consists built-in internal skeleton with the ability to move limbs, which put realistic resistance when laying on the treatment table.

This product comes complete with **carrying case and brush**.

Canine ear model for learning otoscope examinations and ear cleaning techniques

Price inquiry: +48 605999769, kontakt@openmedis.pl

Product code: MZ02552



Training model for learning otoscope examination and cleaning techniques of canine ears. Ear problems in dogs are a common occurrence in veterinary clinics. The ear model includes an anatomically correct silicone pinna, similar to a Labrador's ear, and an ear canal (horizontal and vertical). The turbinate can be gently pulled from the dog's head up and back to open the channel. Students can learn how and where to properly touch the ear canal to remove any debris trapped in the ear. After use, the ear can be easily cleaned and rinsed with soap and water. Interchangeable colored eardrums with symbols allow the teacher to explain to students what to look for when using the otoscope in the ear canal. The model is delivered with a set of cylinders.

Puppy birthing simulator

Price inquiry: +48 605999769, kontakt@openmedis.pl

Product code: MZ02434



The birthing simulator offers a comprehensive kit for training obstetric interventions in bitches and first aid for puppies.

Canine Dental Technician Model

Price inquiry: +48 605999769, kontakt@openmedis.pl

Product code: M01681



This very true-to-life simulator was especially developed for dental technology. It has a wide variety on training possibilities.

- Simulated teeth and bone are surrounded with soft rubber gums
- Allows for practical simulation including manual and ultrasonic scaling, probing, nerve blocks, as well as tongue, epiglottis, esophagus, and trachea to allow for intubation training
- Maxilla and mandible are easily replaced
- Model comes with clamp and arm, and two jaw sets:
 - One set with calculus accumulation for scaling
 - One radiodense jaw set to practice positioning techniques for radiographs
- X-ray set has gums complete with periodontal ligament

Neuter Training Manikin of male dog

Price inquiry: +48 605999769, kontakt@openmedis.pl

Product code: MZ01952



Neuter training manikin simulates the surgical procedure of the male canine. The manikin allows the student to recreate a lifelike, step by step training, from incision to sutures.

The set includes:

- 1/2 Male Manikin
- 3 Male organ Inserts

Spay (sterilization) training simulator of the female canine

Price inquiry: +48 605999769, kontakt@openmedis.pl

Product code: MZ01951



This unique product is designed to simulate spay surgical procedure of the female canine. The manikin allows the student to recreate a lifelike, step by step training, from incision to sutures.

The set includes:

- 1/2 Female Manikin
- 3 Female organ Inserts

Canine Neuter Simulator

Price inquiry: +48 605999769, kontakt@openmedis.pl

Product code: MZ03769



This Canine Neuter Simulator allows students and instructors to practice the canine neuter procedure and, with a small replacement kit, reassemble and practice again!

This model includes a replaceable skin and replaceable testes. The Testes each have two simulated vessels to replicate the vas deferens and the vascular supply and are covered with a pouch layer to mimic the tunica albuginea. The reusable base has a raised ridge that represents the penis for palpation purposes and a tube that represents the urethra. When covered with lubricating gel, the testes can be advanced for a pre-scrotal approach. They can then be amputated through either a closed or an open technique. The skin incision can be closed after the procedure.

Gynecological canine simulator with birthing panel

Price inquiry: +48 605999769, kontakt@openmedis.pl

Product code: MZ02436



The simulator enables training from birth to endoscopic insemination in conditions close to life. The set is made with the highest fidelity to all elements. A gynecological examination with a speculum or endoscope can be performed on an integrated uterus. Artificial insemination can also be trained using a balloon catheter or endoscopic insemination. The uterus has a detailed mucosa with a secondary fold, a dorsal fold, and a cervix. Head vein blood collection to determine hormones for ovulation can be performed on an integrated venous pad. If necessary, organs can be removed and replaced.

The "Bella" kit includes:

- Uterus in heat with secondary folds and endoscopic cervix
- pelvis
- kidneys
- the cephalic vein
- blood reservoir
- Palpable belly (optional)
- Birthing panel with puppies

Canine Rectal Exam Task Trainer

Price inquiry: +48 605999769, kontakt@openmedis.pl

Product code: MZ03958



Providing veterinary medical students and technicians with a realistic animal tissue analogue to practice the common clinical skill of urogenital rectal exam.

A modular clinical physical exam skills model with quickly interchangeable prostate/urethra, rectal, and lymphatic units to accurately assess canine genitourinary rectal exam. Learners can improve their skills and validate competency on a realistic silicone model well before attempting these skills on a real patient, thus improving confidence in technique and reducing negative patient outcomes. 6 different urethra & prostate models • Normal female • Female urinary stone • Normal neutered male • Male urinary stone • Assymetric soft hypertrophic prostate • Asymetric rigid hypertrophic prostate Kit includes 2 Perineum & Rectum units

- 1 normal smooth rectum
- 1 with polyps

Canine Breath/Heart Sound Simulator

Price inquiry: +48 605999769, kontakt@openmedis.pl

Product code: M01399



The highlight of this breath/heart sound (BHS) simulator is to allow students to perform auscultation, offering them opportunities to hear the different sounds with a stethoscope. Instructors can choose various sound scenarios for the classroom. This product uses plug-in modules, with data collated from actual patients. Five speakers are installed directly in our Goldie canine BHS manikin. The BHS unit also has two lights that illuminate during expiration. It is powered by a 9V battery and comes with a limited warranty.

Each Goldie comes with a tutor MS, one Breath Sound module, one Heart Sound module, five installed custom speakers and a 9V battery.

Breath Sound module includes:

Tracheal, Vesicular, Bronchial-Vesicular, Wheezes, Monophonic Wheeze, Pleural Friction Rub, Stridor, Cavernous, Crackles, Pulmonary Edema and Puppy.

Heart Sound module includes:

Atrial Fib, Mitral Regurgitation, Mitral Valve Click, Normal Heartbeat, PDA, Pulmonic Stenosis, Respiratory Crackles and MR Murmurs, SAS, VPC and VSD.



High fidelity dog simulator, K9 DIESEL

Price inquiry: +48 605999769, kontakt@openmedis.pl

Product code: MZ03109



The Advanced Canine Medical Trainer (K9 Diesel) is a full-body simulator for Operational Canine First Responders, Military Working Dog (MWD) handlers, Veterinarians, and Veterinary Technicians. Designed in partnership with the Department of Defense (DoD), K9 Diesel is a state-of-the-art skills trainer that simulates active breathing, audio queues, and over 28 different features and medical intervention sites. Each training site is designed to replicate the look, feel, and function of actual medical procedures. Interchangeable limbs and injuries provide greater flexibility to vary wound patterns. K9 Diesel allows learners to perform a wide range of critical life-saving tasks with an incredibly realistic experience.

Key Features & Training Elements

- Breathing - adjustable from slow to panting
- Interchangeable limbs and injuries
- Bleeding junctional wounds
- Gastric Dilatation Volvulus (GDV)

- Intestinal evisceration
- Pulse
- Airway management
- Audio - barking, whimpering, stertor, and stridor
- Movable jaw
- Intubation
- Breathing response
- Tracheostomy
- Bilateral needle decompression
- CPR



-

IV insertion

-

Bilateral intraosseous infusion

-

Wireless remote control with real-time sensor data and programmable/customizable scenarios

Product Details:

-

Lifelike, full anatomical skeletal motion

-

Realistic airway with adjustable breathing - from slow (10 bpm) to panting (120 bpm)

-

Intubation with chest rise and fall (stomach rise and fall if incorrectly placed in esophagus)

-

Interchangeable front and rear limbs: includes front legs with adjustable carpal fractures, two uninjured rear legs, and an amputated left rear leg with pressure-responsive bleeding

-

Audio queues including barking, whimpering, growling, stertor, and stridor

- Cephalic IV training (bilateral) with flash cue
- Needle decompression/thoracocentesis with air release (bilateral)
- Femoral pulses (bilateral), strength and speed adjustable via remote control (60-170 bpm)
- Reusable lacerated paw for suture and bandage training
- Gastric Dilatation Volvulus decompression (GDV) site (bloat)
- CPR chest compressions with resistance
- Mouth-to-snout resuscitation
- Infusible (bilateral) Tibial and Humeral intraosseous (I/O) training with reusable bone plugs
- Intestinal evisceration
-



Packable bleeding junctional wounds (bilateral)

-

Moveable, simulated GSWs for chest seal training

-

Tracheostomy training site with multi-layered tissue

-

Realistic look and feel with a weight of ~60 lbs

-

Hydrophobic fur with washable leg socks

-

Easy care and maintenance

-

Optional limbs include lower amputation on front leg (left) and resettable compound fracture rear leg (right)

-

Optional mouth wound kit includes injured mouth with throat blockage and tongue with injury

-

Optional floppy ears

-

Wireless remote control with real-time sensor data and programmable/customizable scenario





High fidelity dog simulator, K9 HERO

Price inquiry: +48 605999769, kontakt@openmedis.pl

Product code: MZ03110



The TacMed Simulation Canine Medical Trainer (K9 HERO) is a full-body medical trainer for Operational Canine First Responders, Military Working Dog (WMD) handlers, Veterinarians, and veterinary technicians. Designed in partnership with the Department of Defense (DoD), K9 HERO is a state-of-the-art skills trainer for novices and experienced alike. All training sites are realistic to replicate the look, feel, and function of actual medical procedures. The exterior of the simulator has been hand-sculpted to mimic a Belgian Malinois and is covered in durable, non-staining synthetic fur. K9 HERO allows learners to perform critical life-saving tasks such as maintaining an airway, needle decompression/thoracocentesis, hemostasis, IV insertion, Intraosseous (I/O) infusion, Cardiopulmonary Resuscitation (CPR), tracheostomy, and bandaging.

Key Features:

- Packable wound
- Pulse
- Airway management
- Movable jaw
-



Intubation

-

Breathing response

-

Tracheostomy

-

Needle decompression (thoracocentesis)

-

CPR

-

IV insertion

-

Intraosseous infusion

Product Details:

-

The look and feel of a real dog with naturally flexing joints

-

Realistic weight of 50lbs

-

Easy to use remote control with real-time sensor feedback

-

Life-like airway accepts 10-12mm ET tubes

-

Bag ventilation will cause chest to rise and fall; stomach will rise and fall if ventilated into the esophagus

-

IV training site with flash feedback to show success

-

Intraosseous training site with reusable bone plug for use with EZ-IO catheter

-

Bleeding saphenous wound requiring direct pressure to correct

-

Tracheostomy simulator with multi-layered tissue insert

-

Needle decompression/thoracocentesis site that allows withdrawal of either air or fluid

-

CPR can be performed with full chest compressions

-

Adjustable femoral pulses – can be turned on/off and changed remotely



- Lacerated paw for bandage training
- Optional mouth wound kit (with burn sock) and floppy ears
- Customized wireless remote control
- Easy care and maintenance
- Rugged exterior for use in all training locations and situations
- Operated by a single Makita 12V Li-ion battery

Trainer for learning to catheterize a female dog

Price inquiry: +48 605999769, kontakt@openmedis.pl

Product code: MZ02553



Trainer for teaching catheterization of female dogs. The size of the organs is similar to that of a Labrador dog. All reproductive organs are placed in a realistic silicone mold. All reinforced with mesh for durability. A section of the pelvic bone and soft foam surrounds the silicone tube, giving the trainer a realistic feel. The bladder is filled with water. After successful catheter insertion, fluid drains freely from the trainer. The model can be used upright (as shown in the photo) or on its side. The model has a table handle that ensures stability.

Canine Vet Trainer

Price inquiry: +48 605999769, kontakt@openmedis.pl

Product code: MZ03096



This realistic **Canine Vet Trainer** provides consistent, hands-on practice of caring for a dog. The Canine Vet Trainer is about the size of a mid-sized male Labrador Retriever with moveable limbs to make restraint hold practice realistic. Additionally, students can practice venipuncture, catheterization, and bladder palpation as well as subcutaneous and intramuscular injections and lymph node palpation.

Features:

- Ideal for practicing proper restraint holds.
- Fits standard muzzles.
- Legs move naturally.
- Includes dog collar and tag.
- Use the three removeable bladders to practice palpating for different scenarios: Empty, full and bladder stones.
- Use the lymph node markers to test students' knowledge of canine lymph node locations.

Contents:

- Canine Vet Trainer,
- Quick start guide,
- IV stand and bag,
- 3 palpation bladders,
- Syringe with 22-gauge needle,
- 8 Fr catheter,
- 8 lymph node markers,
- Dog collar and tag,
- Downloadable curriculum and slide, presentations,
- 1-year limited warranty.

Canine Spay Simulator

Price inquiry: +48 605999769, kontakt@openmedis.pl

Product code: M01686



The simulator intended for learning and training dog sterilization.

Main features:

- Replaceable uterus with ovaries, broad ligament and suspensory ligaments
- Large and small intestine with mesentery and cecum
- Spleen, kidneys and bladder
- Upper and lower thermoformed ABS plastic shell with suction cups
- Canine multi layer suture pad that features nipples and umbilicus
- Attachment pins for suture pad

Części wymienne

- uterus
- suture pads