

Skull of Domestic dog (*Canis familiaris*), 2 parts

Price inquiry: +48 605999769, kontakt@openmedis.pl

Product code: MZ02013



High quality skull reproduction. 2part model, lower jaw removable. Skull length appr. 18cm.

Dog Skull, big size (Canis familiaris, replica)

Price inquiry: +48 605999769, kontakt@openmedis.pl

Product code: MZ03094



Replica of a dog skull, big size (Canis familiaris, crossbreed).

Length: ca. 21.5 cm.

Dog Skull, small size

Price inquiry: +48 605999769, kontakt@openmedis.pl

Product code: M01406



Our animal bone specimens are made by well-known taxidermists in Germany, following all animal protection and hygienic laws. We do not sell cheap and ethically dubious specimens from Eastern Europe or China

Canine Vertebral Column

Price inquiry: +48 605999769, kontakt@openmedis.pl

Product code: M01340



Vertebral column of average size dog features 5 lumbar vertebrae and discs, caudal (tail) vertebrae and sacrum.
Size: 20 x 5 x 5 cm

Canine Hip

Price inquiry: +48 605999769, kontakt@openmedis.pl

Product code: MZ03021



Average size dog pelvis features both normal and osteoarthritic bone, body of ilium, greater trochanter, head in acetabulum, herniated disc, neck of femur, nerve, sacrum, and third trochanter.

Size: 18 x 14 x 28 cm

Canine skull model of medium breed dog, 2 parts

Price inquiry: +48 605999769, kontakt@openmedis.pl

Product code: MZ02015



High quality skull reproduction of medium breed dog as German Shepherd. 2 - part model, lower jaw removable. Skull length appr. 25cm.

Canine Skull with moveable jaw

Price inquiry: +48 605999769, kontakt@openmedis.pl

Product code: M01666



This **canine skull** is an anatomical model and can be used by vets, alternative animal healthcare practitioners and animal physiotherapists for decoration or as an aid for patient owner clarification.

- The canine skull is a detailed plastic cast and is firmly mounted on a stable white base.
- The jaw is flexibly mounted for movement representation.
- The lower jaw is movable to identify the teeth and inner structures of the **canine skull**.
- Size: approximately that of a small dog, such as a Jack Russell Terrier
- Plastic casting
- Detailed
- Mobile jaw
- Mounted on white plastic base
- Dimensions (L x H x W): **12 x 10 x 12 cm**



Weight: 0,39 kg

Canine skull model of large breed dog, 2 parts

Price inquiry: +48 605999769, kontakt@openmedis.pl

Product code: MZ02014



High quality skull reproduction of large breed dog as great dane. 2 - part model, lower jaw removable. Skull length appr. 26cm.

Dog skull with didactic painting

Price inquiry: +48 605999769, kontakt@openmedis.pl

Product code: MZ02617



Life-size model of a dog's skull. It presents anatomical structures and is painted in a didactic way so that the individual bones of the skull and their mutual relations are clearly visible. The perfect tool for canine osteopaths and canine physiotherapists. It is also a practical teaching equipment for veterinary laboratories of schools and universities.

Advantages:

- The lower jaw can be moved and removed.
- Educational card in English and German included

Dimensions and weight:

- Size: 22x10x10 cm,
- weight 0.5 kg

Application:

- anatomical model for educational use for pupils and students
- equipment for a veterinary laboratory

Skull, Wolf (Canis lupus), Alaskan Wolf

Price inquiry: +48 605999769, kontakt@openmedis.pl

Product code: MZ03022



High quality skull reproduction. 2part model, lower jaw removable. Skull length appr. 28,5cm.

Canine Knee

Price inquiry: +48 605999769, kontakt@openmedis.pl

Product code: MZ03784



Average size dog knee with femur, fibula, patella and tibia bones; lateral and medial meniscus; anterior and posterior cruciate ligaments; plus more ligaments and tendons.

Articulated Canine Hind Leg Bones

Price inquiry: +48 605999769, kontakt@openmedis.pl

Product code: MZ03975



Anatomically precise 3D printed dog bones.

3D printed bones accurately show important osteological features of the hind limb, from the hip down to the digits, enabling students to learn and identify the name, position and function of the features. The bones come pre-drilled in exactly the right places (for threading together) to allow easy demonstration of how the joints fit together and the major ligaments of joints. Bones can be drawn on with water-based pens and then washed clean in soapy water. Holsim Dog Bones were 3D scanned from bones prepared from a single real dog, and then 3D printed from renewable bioplastic. Because the original scan data for the bones came from a single dog, all of the bones are in proportion and fit together snugly.

Articulated Canine Hind Leg Bones - assembled

Price inquiry: +48 605999769, kontakt@openmedis.pl

Product code: MZ03976



Anatomically precise 3D printed dog bones.

3D printed bones accurately show important osteological features of the hind limb, from the hip down to the digits, enabling students to learn and identify the name, position and function of the features. The bones come pre-drilled in exactly the right places (for threading together) to allow easy demonstration of how the joints fit together and the major ligaments of joints. Bones can be drawn on with water-based pens and then washed clean in soapy water. Holsim Dog Bones were 3D scanned from bones prepared from a single real dog, and then 3D printed from renewable bioplastic. Because the original scan data for the bones came from a single dog, all of the bones are in proportion and fit together snugly.

Canine spine model with sacrum

Price inquiry: +48 605999769, kontakt@openmedis.pl

Product code: M01662



This model presents of the lower spine of a medium-sized dog. The **Dog Spine model** is mounted with a stand on a white plastic base. It is ideal for providing patient owners with better advice.

The Canine Spine Model Represents:

- 5 lumbar vertebrae
- Intervertebral discs
- Caudal vertebrae
- Sacrum

Further information:

- Size (L x H x W): 22,5 x 16 x 16 cm
- **Weight: 0,45 kg**
- Mounted on a base

Real Dog Skeleton, assembled, big size dog

Price inquiry: +48 605999769, kontakt@openmedis.pl

Product code: M01335

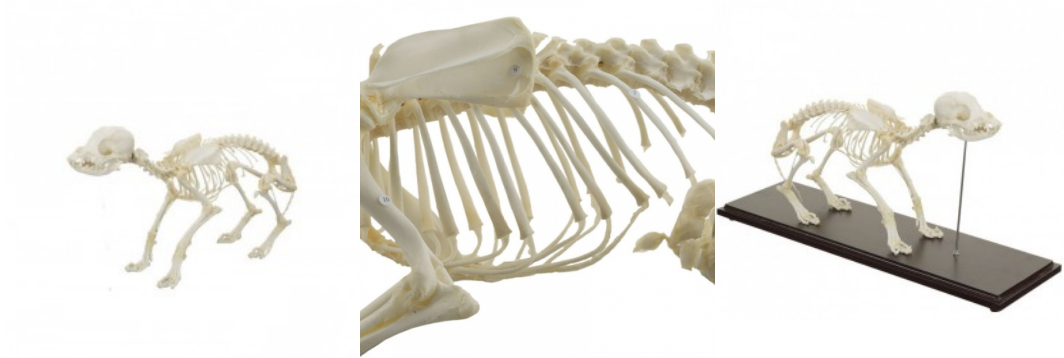


Our animal bone specimens are made by well-known taxidermists in Germany, following all animal protection and hygienic laws. We do not sell cheap and ethically dubious specimens from Eastern Europe or China

Canine Skeleton Specimen

Price inquiry: +48 605999769, kontakt@openmedis.pl

Product code: M01649



A skeleton model of a dog on a wooden base. It is an excellent didactic aid, it is used for demonstration purposes.

Additional features:

- dimensions: 45x12x25cm
- has individual bones numbered
- model supplied with a plastic protective cover

Dog Skeleton, unassembled, small size dog

Price inquiry: +48 605999769, kontakt@openmedis.pl

Product code: M01367



Our animal bone specimens are made by well-known taxidermists in Germany, following all animal protection and hygienic laws. We do not sell cheap and ethically dubious specimens from Eastern Europe or China

Dog skeleton, life size

Price inquiry: +48 605999769, kontakt@openmedis.pl

Product code: M01219



Actual cast of the skeleton of a medium-size crossbreed dog with about 45cm shoulder height. The spine is not moveable, tail and skull are removable. The legs can be moved and removed, perfect for use in courses and further education. The lower jaw is movable mounted, the teeth are represented naturally.

Model size without base: 90 x 16 x 65 cm

Dog skeleton model, unassembled (German Shorthaired Pointer - old male)

Price inquiry: +48 605999769, kontakt@openmedis.pl

Product code: MZ02590



The model shows a set of bones of an adult German Shorthaired Pointer. The model is made of real bones and is a great tool for learning the bone structures of dogs.

weight: approx. 4 kg

Dog Skeleton, unassembled, big size dog

Price inquiry: +48 605999769, kontakt@openmedis.pl

Product code: M01374



Our animal bone specimens are made by well-known taxidermists in Germany, following all animal protection and hygienic laws. We do not sell cheap and ethically dubious specimens from Eastern Europe or China

Dog Skeleton, unassembled, middle size dog

Price inquiry: +48 605999769, kontakt@openmedis.pl

Product code: M01368



Unmounted skeleton of a medium-sized dog.

Hundeknie

Price inquiry: +48 605999769, kontakt@openmedis.pl

Product code: M01336



Average size dog knee with femur, fibula, patella and tibia bones; lateral and medial meniscus; anterior and posterior cruciate ligaments; plus six more ligaments and tendons.
Size: 5 x 9 x 18 cm

Dog Skeleton, assembled, small size dog

Price inquiry: +48 605999769, kontakt@openmedis.pl

Product code: M01392



Our animal bone specimens are made by well-known taxidermists in Germany, following all animal protection and hygienic laws. We do not sell cheap and ethically dubious specimens from Eastern Europe or China

Beagle skeleton (adult male)

Price inquiry: +48 605999769, kontakt@openmedis.pl

Product code: MZ02626



Complete frame, ready for assembly

Approximate dimensions after folding:

- Height 60 cm
- Width 20 cm
- Length 70 cm
- Weight: 2 kg

Skeleton of a dog breed - Dalmatian (old female)

Price inquiry: +48 605999769, kontakt@openmedis.pl

Product code: MZ02628



Complete frame, ready for assembly

Approximate dimensions after folding:

- Height 60 cm
- Width 20 cm
- Length 90 cm
- Weight 3 kg

Skeleton of a Miniature Dachshund dog (old female)

Price inquiry: +48 605999769, kontakt@openmedis.pl

Product code: MZ02630



Complete frame, ready for assembly

Approximate dimensions after folding:

- Height 20 cm
- Width 15 cm
- Length 45 cm
- Weight 1 kg

Skeleton of a Rottweiler (old female) dog

Price inquiry: +48 605999769, kontakt@openmedis.pl

Product code: MZ02621



Complete frame, ready to be assembled.

Dimensions after folding:

- Height 60 cm
- Width 25 cm
- Length 90 cm
- Weight 4 kg

Siberian Husky dog skeleton (old male)

Price inquiry: +48 605999769, kontakt@openmedis.pl

Product code: MZ02623



Complete frame, ready for assembly.

Approximate dimensions after folding:

- Height 75 cm
- Width 25 cm
- Length 95 cm
- Weight 4 kg

Dog Skeleton, assembled, middle size dog

Price inquiry: +48 605999769, kontakt@openmedis.pl

Product code: M01405



Our animal bone specimens are made by well-known taxidermists in Germany, following all animal protection and hygienic laws. We do not sell cheap and ethically dubious specimens from Eastern Europe or China