



Spare parts for the Cystocentesis simulator

Price inquiry: +48 605999769, kontakt@openmedis.pl

Product code: MZ03795



Spare parts for the Cystocentesis simulator: skin coating.



Intramuscular and subcutaneous Injection Pad

Price inquiry: +48 605999769, kontakt@openmedis.pl

Product code: MZ01947



A professional injection pad that allows you to gain experience in making intramuscular and subcutaneous injections. Has realistic dog skin and muscle tissue. Additionally, it is delivered in a special protective case. Dimensions of the SQ / IM injection pad are approximately 7.5 x 12.7 x 3.2 cm

Im puncture pad small animal

Price inquiry: +48 605999769, kontakt@openmedis.pl

Product code: MZ03780



On this two-layer muscle pad, intramuscular injections on small animals can be practically trained. The lifelike skin surface simulates the soft skin of a dog or cat in texture and feel. Smaller amounts of injection volumes can be applied to the pad and different injection angles and depths can be trained. The skin-like surface closes after injection and allows multiple injections to be used.



Wearable IV Trainer, pediatric size

Price inquiry: +48 605999769, kontakt@openmedis.pl

Product code: MZ03777



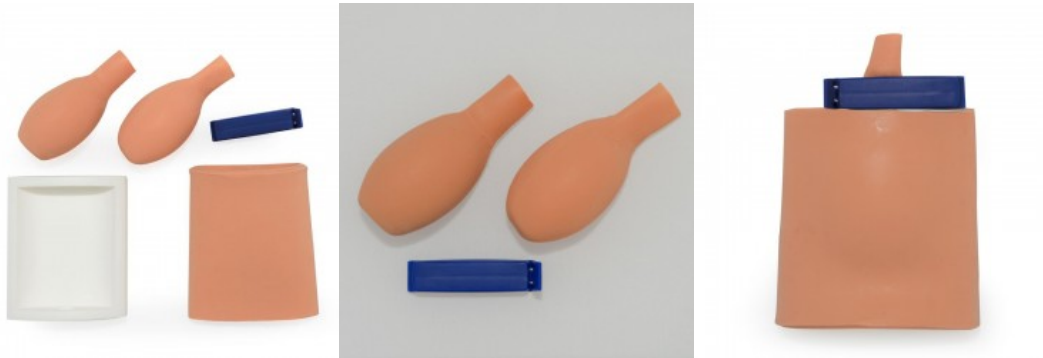
Patented ReaLifeSim IV Trainers are wearable, affordable, durable, and safe. They are available in three sizes (adult, pediatric, infant).

Features: - Life-like skin (*latex-free) with feel of „pop“ through the skin and the second „pop“ through the vessel followed by a realistic flashback. - Velcro straps for flexible fitting and positioning on the forearm. - Entire base of sleeve covered with protective puncture-proof material. - Soft, smooth, durable microfiber lining near the skin. - Different veins available for individual setting. Pediatric Size, or also suitable for veterinary simulations at a medium animal leg. Size: 10.1 x 3.8 cm

Cystocentesis Simulator

Price inquiry: +48 605999769, kontakt@openmedis.pl

Product code: MZ03789

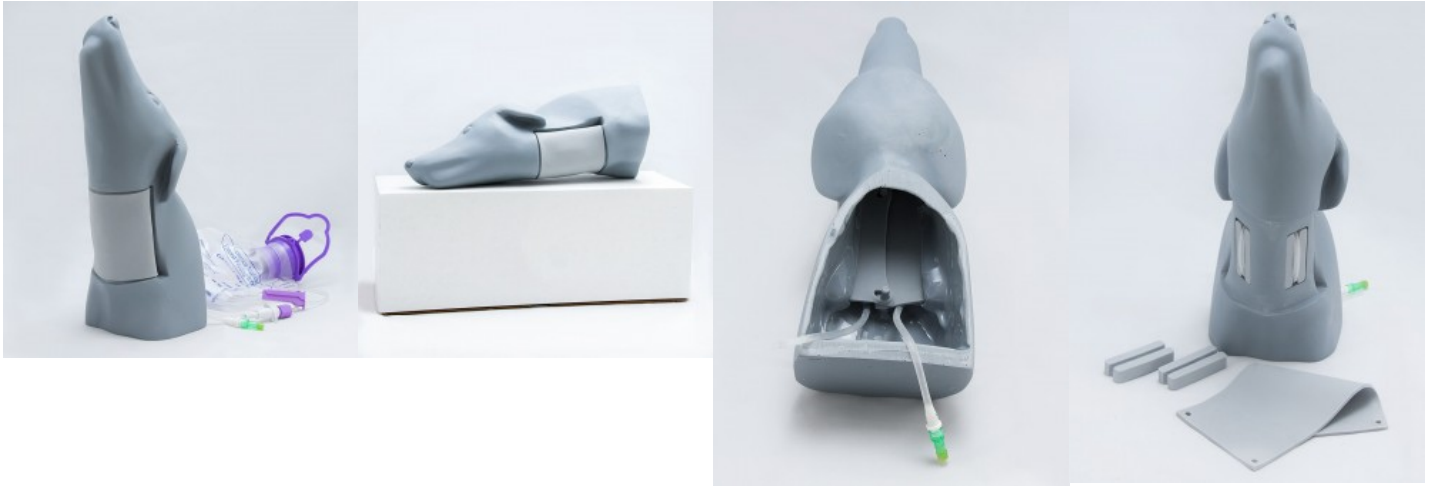


The Cystocentesis model simulates a small animal abdominal wall and bladder to provide a realistic platform to develop and refine skills without requiring a live animal. Able to be used in conjunction with an ultrasound, real-world practices can be fully implemented. Included in the package is one base, two bladders, and a skin “sleeve”. The skin is designed to envelope the base so that students can practice multiple times by rotating it further around the base to expose an unused skin surface.

Dog head - vascular access simulator

Price inquiry: +48 605999769, kontakt@openmedis.pl

Product code: MZ02392



The Dog Head Vascular Access Simulator was developed for practicing blood collection from the jugular vein and catheter insertion in small animals. This model is characterized by a correct head position for ideal training as well as simulated skin and veins, which are much more realistic compared to latex. Both the skin and the vein are available as replacement parts so that you can exercise as much as you need at low cost. Should it be even more demanding? The Dog Head Vascular Access Simulator comes with TWO vein pillows that hold the simulated jugular vein at different depths, allowing for additional challenges.

Canine Leg Vascular Access Simulator

Price inquiry: +48 605999769, kontakt@openmedis.pl

Product code: MZ01948



A realistically made model of a dog's limb for training skills in venipuncture and insertion of a 22 or smaller catheter.

Application Advantages:

- The use of special materials increases the realism and effectiveness of the exercises.
- The model encourages students to practice vascular access techniques without the need for a partner or live animal.

Set contains:

- 1000 ml bag
- powdered artificial blood
- imitation leather
- instructions for configuration, maintenance and use of the model

Replaceable consumables:

- black or brown leather
- replaceable cephalic vein
- A container with powdered artificial blood
- A bag with a capacity of 1000ml

Canine jugular venipuncture head

Price inquiry: +48 605999769, kontakt@openmedis.pl

Product code: MZ04014



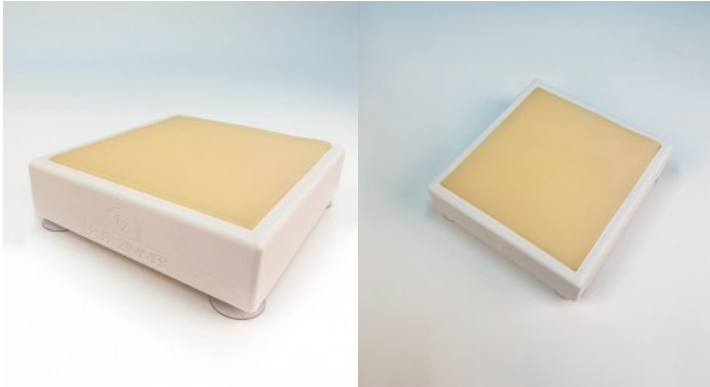
Accessing the jugular vein is a common procedure in veterinary medicine and is often used for various purposes such as administering medications, fluids, obtaining blood samples, or performing certain diagnostic tests.

The head shows an extended neck position. Training on two veins is possible. The head comes with two skin covers. Both veins and skin are available as replacement parts.

IM Puncture Trainer Small Animal

Price inquiry: +48 605999769, kontakt@openmedis.pl

Product code: MZ03773



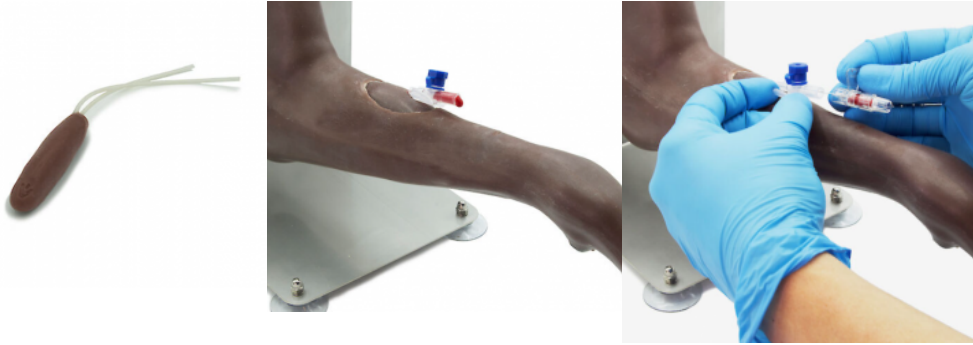
On this two-layer muscle pad, intramuscular injections on small animals can be trained in practice. The lifelike skin surface simulates the soft skin of dogs or cats in texture and haptics. Smaller amounts of injection volumes can be applied into the pad and different injection angles and depths can be trained. The skin-like surface closes after injection and allows the application of several injections.

The trainer has a holder, which ensures a secure hold on the table with suction cups.

V. cephalica - Mr. Vein

Price inquiry: +48 605999769, kontakt@openmedis.pl

Product code: MZ03950



This vein module has an integrated vein, which enables lifelike training of blood collection from the cephalic vein on the dog's foreleg. In addition to blood collection, the training of an intravenous injection or the application of a vein catheter is also possible.

The vein module can be connected to the blood reservoir in our Mr. Vein in just a few steps. Our vein modules can be used several times after a puncture, are tear-resistant and retain their shape and texture even after repeated use. Canine leg and accessories are not included. dimensions: ca. 2 x 9 x 2,5 cm

V. cephalica Set - Mr. Vein

Price inquiry: +48 605999769, kontakt@openmedis.pl

Product code: MZ03951



This vein module has an integrated vein, which enables lifelike training of blood collection from the cephalic vein on the dog's foreleg. In addition to blood collection, the training of an intravenous injection or the application of a vein catheter is also possible.

The vein module can be connected to the blood reservoir in our Mr. Vein in just a few steps. Our vein modules can be used several times after a puncture, are tear-resistant and retain their shape and texture even after repeated use. Canine leg and accessories are not included. dimensions: ca. 2 x 9 x 2,5 cm content: 3 modules

Canine IV and bandaging training le - Mr. Vein

Price inquiry: +48 605999769, kontakt@openmedis.pl

Product code: MZ03949



Our Mr. Vein allows for hands-on training of injection techniques and paw bandaging on the dog's leg. With the integrated elbow and carpal joint, handling and fixation of the foreleg can be simulated under realistic conditions.

Blood samples can be taken from the movable cephalic vein and venous catheters can be inserted in a lifelike manner. The detailed representation of the individual toes with pads and interdigital spaces also enables the application of paw bandages. With the solid stainless steel holder, Mr. Vein can be used in mobile applications and offers optimum grip on smooth surfaces with the integrated suction cups. If necessary, the vein module can be removed and replaced in a few simple steps. Mr. vein includes

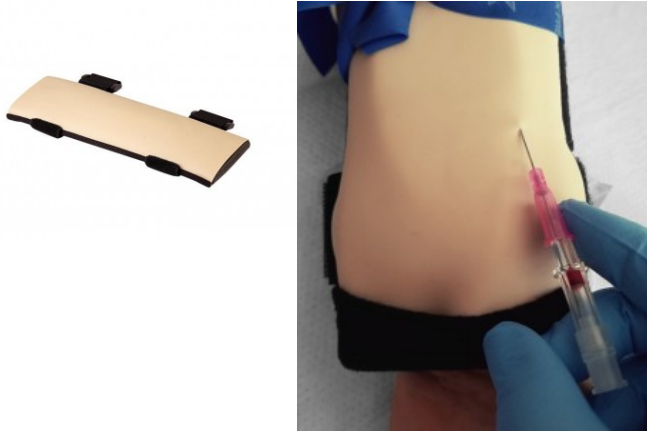
- dog leg
- stainless steel holder
- 3 x V. cephalica
- Blood reservoir

dimensions: ca. 20 x 35 x 14 cm (H x L x W) weight: ca. 1,1 kg

Strap-on IV trainer, large size

Price inquiry: +48 605999769, kontakt@openmedis.pl

Product code: MZ03776



These patented IV trainers are strap-on, inexpensive, robust and safe. They are available in different sizes.

Contain: - Lifelike skin (latex-free) with palpable penetration of the skin and penetration into the vein, as well as with reflux of blood with correct puncture. - Velcro straps for flexible attachment and positioning. - The entire bottom of the trainer is made of puncture-proof material. - Soft, even and robust microfibre coating towards the skin. - Different veins available for different applications. Adult size, or also suitable as a veterinary model for the neck of a large animal. Size: 25.4 x 7.6cm Vein not included, please order separately.

Strap-on IV trainer, neck middle animal

Price inquiry: +48 605999769, kontakt@openmedis.pl

Product code: MZ03779



Patented VetLifeSim IV trainers are strap-on, inexpensive, robust and safe. They are available in four sizes (neck large animal, neck medium animal, leg medium animal, leg small animal).

Features: - Lifelike skin (latex-free) with palpable penetration of the skin and penetration into the vein, as well as with reflux of blood with correct puncture. - Velcro straps for flexible attachment and positioning on the forearm. - The entire bottom of the trainer is made of puncture-proof material. - Soft, even and robust microfibre coating towards the skin. - Different veins available before different applications. Suitable for: Neck medium animal. Size: 15.2 x 7.6 cm Vein not included, please order separately.

Subcutaneous puncture trainer small animal

Price inquiry: +48 605999769, kontakt@openmedis.pl

Product code: MZ03774



On this multi-layer tissue pad, subcutaneous injections in dogs and cats can be trained in a realistic way. The skin-like surface can be palpatorily differentiated into cutis and subcutis and allows the lifting of a skin fold for the localization of the correct injection depth. Smaller amounts of injection volumes can be applied into the pad and different injection angles and depths can be trained. The soft surface closes after injection and allows the application of several injections.

The trainer includes a holder with suction cups for secure attachment to the table.

Small leg support with skin crack

Price inquiry: +48 605999769, kontakt@openmedis.pl

Product code: MZ03786



Train stitching lacerations and stitching on a living object. The leg mounts are suitable for most small animals and training dummies and are secured by the Velcro fasteners above and below SurgiReal's simulated RealLayer Tissue Pad. Possible applications include practicing superficial seams, ensuring knot safety and sinking seams. Since safety is our top priority, all skin crack holders are made of a stab-proof material, so that the needle cannot come into contact with your participant. Develop your skills in three stages: holder attached to a manikin, bracket attached to a stationary actor, bracket attached to an actor imitating the movement of a patient

Canine i.v. Leg

Price inquiry: +48 605999769, kontakt@openmedis.pl

Product code: M01366



We are proud to introduce this fully functional canine i.v. leg trainer at an affordable price! The trainer represents the left foreleg of a medium-sized dog in the sternal recumbent position, and features two interchangeable sleeves – normal fur for routine blood draws, and a “shaved” area for i.v. catheter insertion. The replaceable vein system demonstrates actual blood flashback. Great for bandaging and restraint/assistance practice as well. The stable, self-supporting design lets students practice alone or as a team. Perfect for veterinary schools and vet tech programs. Includes a portable storage box with built-in i.v. pole, blood powder, syringe, i.v. catheter, and two fluid supply bags.

Canine Venipuncture and Injection Trainer

Price inquiry: +48 605999769, kontakt@openmedis.pl

Product code: MZ02634



Canine Hindlimb Advanced Model for Phlebotomy.

The simulation model accurately represents a canine hindlimb in both appearance and functional anatomy.

The modular system allows to practice the following skills:

venipuncture procedures on the lateral saphenous vein in the lower leg as well as intramuscular and subcutaneous injections in the upper thigh.

Each complete model includes: a lower leg Venipuncture/ IV trainer, upper thigh Injection trainer, IV tubing and IV bag prefilled with our Sim Blood.



Holder for puncture cushion VET5050A or VET5055A

Price inquiry: +48 605999769, kontakt@openmedis.pl

Product code: MZ03781



Holder suitable for animal puncture pads VET5050A and VET5055A. With 4 suction cups for secure attachment to the table.

Vascular access leg mount, animal (dog)

Price inquiry: +48 605999769, kontakt@openmedis.pl

Product code: MZ03785



Practice venipuncture and vascular access with our vascular access dog leg mount. Made of high-quality and durable silicones, the vascular access dog leg mount is specially designed for blood collection and insertion of a 22 gauge or smaller catheter. Our simulated cephalic vein is softer than conventional latex tubes to further increase fidelity and effectiveness. This model allows learners to improve their ability to lay vascular access without the need for a partner or a live animal. Your vascular access dog leg holder includes a 1000 ml infusion bag, artificial blood powder and skin, as well as instructions for building, caring for and using the model.



Subcutaneous puncture pad small animal

Price inquiry: +48 605999769, kontakt@openmedis.pl

Product code: MZ03782



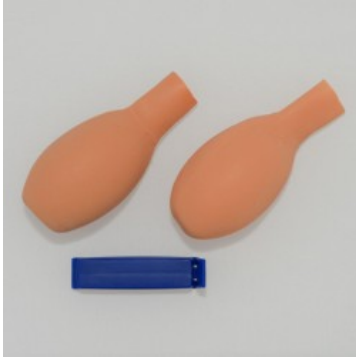
On this multi-layer tissue pad, subcutaneous injections in dogs and cats can be trained in a realistic way. The skin-like surface can be palpatorily differentiated into cutis and subcutis and allows the lifting of a skin fold for the localization of the correct injection depth. Smaller amounts of injection volumes can be applied into the pad and different injection angles and depths can be trained. The soft surface closes after injection and allows the application of several injections.



Replacement bubbles (2) and clip for the Cystocentesis simulator

Price inquiry: +48 605999769, kontakt@openmedis.pl

Product code: MZ03788



Spare parts for the Cystocentesis simulator: 2 bubbles with one clip

Canine IV Training Leg

Price inquiry: +48 605999769, kontakt@openmedis.pl

Product code: MZ01950



This product is designed to train students for IV blood draw or injection. IV training leg has been tested for up to 300 plus punctures. IV training leg is made from a rubber like material. This product can easily be cleaned without the sticky mess fur models can create.

The set includes:

- 1 IV Training Leg
- 1 quart Vet Effects blood
- 1 Funnel

K-9 IV Trainer

Price inquiry: +48 605999769, kontakt@openmedis.pl

Product code: M01390



Realistic front dog paw trainer. Intended for learning how to inject and draw blood. It has a cephalic vein. It has artificial fur that can be trimmed with a haircut. Multiple haircuts by turning the fur are possible. The cephalic vein can be easily felt and punctured repeatedly. The peripheral venous catheter (PVK) is easy to change. The paw comes with a replaceable hair and an additional venous line.