

Cow Hoof Model, 2 parts

Price inquiry: +48 605999769, kontakt@openmedis.pl

Product code: MZ01881



Two-piece model of a cow's hoof, depicting the external and internal structure. Model on the base.

Dimensions: approx. 31x21x18cm

Weight: approx. 2.25-2.5kg.

Half-Carcass beef (bull) model, natural size

Price inquiry: +48 605999769, kontakt@openmedis.pl

Product code: MZ02397



The life size model showing a beef half-car carcass on a base. The individual parts of the model were divided according to the DLG classification - "simplified DLG cutting method".

The model is divided into 12 parts in total, such as:

- - hind shank
 - round
 - loin
 - tenderloin
 - flank
 - plate
 - chuck
 - neck
 - brisket
 - shoulder
 - fore shank

Specification:

- Height approx. 220 cm
- Weight approx. 20 kg (+ -10%)

Additional information:

- Option: Additionally, the model may have a dashed line in order to present the essential elements according to division recommend in your country:
- It is possible to make a model in any dimensions (individual valuation)
- We can customize this model to your specification



Butcher Beef Cut Models, 1:2

Price inquiry: +48 605999769, kontakt@openmedis.pl

Product code: MZ03098



The life-like **Butcher Beef Cut Models** are a set of four separate, quartered section models. These include Round, Loin, Rib, and Chuck from half of a steer. This set of models are one-half the size of a steer and feature 21 magnetic models depicting the most popular cuts of beef. Use the butcher beef cut models to identify various cuts as well as learn how to prep and cook each.

Contents:

- 21 individual beef cuts,
- Chuck (5 pieces),
- Ribs (4 pieces),
- Loin (7 pieces),
- Round (5 pieces),
- Presentation slides,
- Quick Start Guide,
- Downloadable curriculum,
- 1-year limited warranty.

Specifications:

- Dimensions: 71 x 51 x 51 cm
- Weight: 23 kg

Bovine Fetal Development Models, 8 models

Price inquiry: +48 605999769, kontakt@openmedis.pl

Product code: MZ02395



The realistic models depict cattle fetuses at various stages of development. The stages include the corpus luteum and fetus at 1, 2, 3, 5, and 7 months of age. All eight models have realistic functions, dimensions and design.

Specifications:

- 7-8 Month Model Dimensions: 61 x 21x 33.cm
- 5-6 Month Model Dimensions: 36 x 12 x 23cm
- 3-4 Month Model Dimensions: 16 x 1 4,5 x 8cm
- 2 Month Model Dimensions: 6,5x 2,5 x 4cm
- 1 Month Model Dimensions: 1,25 x 1 x 1,3cm

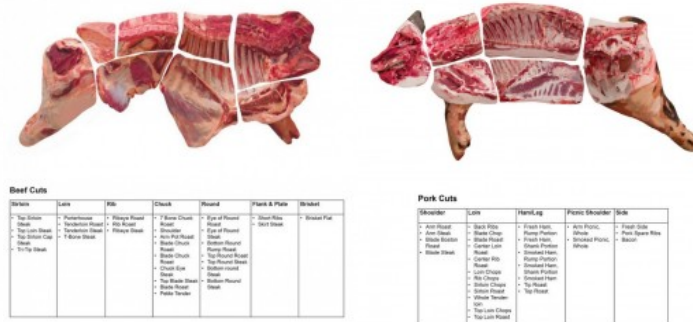
Package includes:

- 3 corpus luteum models
- 5 bovine fetal development models (1, 2, 3, 5 and 7 months)
- Online access to curriculum
- 1-year limited warranty

Beef and Pork 3D Meat Cuts Poster

Price inquiry: +48 605999769, kontakt@openmedis.pl

Product code: MZ02281



A convex board (3D) showing the division of beef and pork carcass into the main culinary elements. Includes realistic and full-color details.

Size: 74x99x4.5cm

3D Anatomy Chart - Cow Anatomy

Price inquiry: +48 605999769, kontakt@openmedis.pl

Product code: MZ01883



3D anatomical board, which separates and opens in the middle part, showing 3 separate anatomical illustrations of a cow:

- external structures,
- skeleton,
- internal organs and reproductive system.

The board presents a cow in 1/6 of the size of natural size.

Additional information:

- Dimensions: 46 x 102 x 82cm
- Weight: about 16kg
- The set includes a tripod on wheels

Cow front leg, 1/3 life size

Price inquiry: +48 605999769, kontakt@openmedis.pl

Product code: MZ02170



Three times reduced cow hind leg model. Shows all relevant anatomical structures.

* possible model realization on any scale

Milking Udder

Price inquiry: +48 605999769, kontakt@openmedis.pl

Product code: MZ03961



Model to teach milking, cupping and teat sealing techniques.

Students can practise the technique of pulling and producing milk from the teats in a controlled environment with a clear assessment from the tutor before advancing into the field. Students can also learn how to treat mastitis in the teats. The udder is made with moulded plastic, and each teat is removable for cleaning and maintenance. The udder can be filled with 'milk' for training. There are two types of teats: pink for use with milking training, and clear, for teaching teat sealing techniques. The clear silicone allows students to see how far up into the teat the syringe is inserted and antibiotics are applied. The udder is mounted on high-grade plywood stand for tabletop use.

Cow and Pig Ear Simulation

Price inquiry: +48 605999769, kontakt@openmedis.pl

Product code: MZ03966



Proper ear care and identification while providing safe, consistent ear tagging and notching practice with our Cow and Pig Ear Simulation. All ears are removable and replaceable, featuring a realistic look and feel.

Contents

- Cow head model
- Cow ears (50 pairs)
- Pig head model
- Pig ears (100 pairs)
- Storage box
- Downloadable curriculum

Note: Does NOT include ear tagging or notching tools and ear tags

Mastitis Udder Kit

Price inquiry: +48 605999769, kontakt@openmedis.pl

Product code: MZ03963



Designed to be used with the Bovine for teaching mastitis treatment techniques in cattle.

Mastitis Udder Kit Includes:

- Vacuum Formed Udder
- Clear Teats x 4
- Mounting Rings x 4
- Teat Fasteners
- Knurl Screws x 4

Milking Udder Kit

Price inquiry: +48 605999769, kontakt@openmedis.pl

Product code: MZ03962



Designed to be used with the Bovine for teaching milking techniques.

Mastitis Udder Kit Includes:

- Vacuum Formed Udder
- Pink Teats x 4
- Mounting Rings x 4
- Teat Fasteners
- Knurl Screws x 4

Metri-Treating Kit

Price inquiry: +48 605999769, kontakt@openmedis.pl

Product code: MZ03964



Designed to be used in conjunction with the simulator for simulating endometritis treatment techniques in cattle.
Metri-Treating Kit Includes:

- G-Tract A (Shroud, rump, etc.)
- Uterine Horns with Stretchy V
- Rectum Bag & Clamp
- Bungee & Carabiner Kit
- Knurl Screws x 3