

Bovine skull anatomy model, artificial

Price inquiry: +48 605999769, kontakt@openmedis.pl

Product code: MZ01970



A model of a bovine skull made on a 1:1 scale. It was developed on the basis of real bovine skulls together with veterinary teachers, in that it contains most of the major anatomical structures necessary to learn the anatomy of the skull of a cow. This **bovine skull** also has a detachable mandible with full teeth, which can be attached to the skull at any time using magnets placed in the model.

Additional information:

- short production time about 3-4 days
- life size
- anatomical detail
- detachable mandible

Cow model - OpenMedis, 15 parts, 1/3 life size.

Price inquiry: +48 605999769, kontakt@openmedis.pl

Product code: M01723



Anatomical **Model of a cow** with removable organs. This high quality anatomical model shows a female cattle on a stand in 1/3 life size. One side of our **anatomical cow model** presents the external anatomy of the animal, while the other presents the muscular system. Our **bovine model** is divided into two parts in the sagittal plane, which allows to present the internal anatomy of gastrointestinal, reproductive and excretory systems and udder.

The bovine model can be disassembled into 15 pieces, including:

- one limb,
- heart (2 pcs),
- lung, small and large intestines,
- stomach (3 pcs),
- kidney,
- uterus with an ovary (2 pcs),
- liver,
- tail,
- the half with the muscular system,
- the half with the external anatomy.

When the internal organs are taken out, the **cow model** presents the muscular system of the thorax and the abdomen.

Specifications:

- weight: ca. 12 kg
- width: 28 cm
- length: 93 cm
- height: 49 cm
- 1/3 life size
- 15 parts removable

Application of the cow model

The **educational cow model** is an ideal equipment for veterinary laboratories and clinical skills laboratories. Perfect for learning the anatomy and topography of the organs of female breeding cattle. **The bovine model** is dedicated to Universities of Life Sciences, Agricultural Universities, Veterinary Technicians and Agricultural Education Centers. All veterinary models in our offer are designed to make the veterinary education process more attractive and to help achieve the expected educational outcomes.

Additional information:

- The product is available only on request
- delivery time: ca. 4 - 6 weeks



- The model can be produced in different scales/sizes

Calf phantom

Price inquiry: +48 605999769, kontakt@openmedis.pl

Product code: MZ02159



A life-size phantom of a domestic cattle calf intended for educational purposes for future doctors and veterinary technicians. It allows you to acquire practical skills before starting working with a real animal.

Features:

- Pliable ears
- Moveable mouth
- Jugular pulse
- Navel swelling
- 2 removeable scrotums
- Curriculum that addresses animal husbandry and proper calf care

Use the Calf Simulator to practice:

- Tube feeding
- Ear tagging
- Hormone implantation
- Hormone injection
- Tail blood draws
- Castration

Contents:

- Calf Simulator
- Feeding tube and bag
- 10 pairs of replacement ears
- 2 removable scrotums
- Quick start guide
- Downloadable curriculum (including presentation slides)
- 1-year limited warranty

Specifications:

- Product Dimensions: 117 x 30 x 102 cm
- Product Weight: 14 kg

Dystocia Calf Model

Price inquiry: +48 605999769, kontakt@openmedis.pl

Product code: M01687



A realistic model of a dystocia calf.

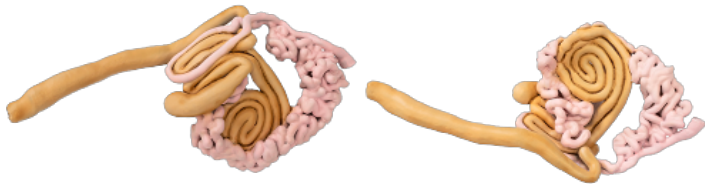
Main features:

- Fully articulated steel skeleton, with ribcage, vertebrae, pelvis and spine
- Realistic movement; durable and flexible skin and tail
- Skull with movable jaw, teeth, soft palate
- Esophagus and palpable anus
- Reinforced ears and forelegs with durable hooves for chaining
- Realistic 22.7kg weight
- Available in 4 breeds: Hereford, Holstein, Black and Red Angus
- Custom breeds available at an additional cost

Small and large intestine of cows, 1/3 life-size

Price inquiry: +48 605999769, kontakt@openmedis.pl

Product code: MZ02168



The one-piece model of small intestine and large intestine of a cow. Shows all relevant anatomical structures.

*possible model realization on any scale

Emma Cow - Advanced simulator for artificial insemination (AI) of the cow

Price inquiry: +48 605999769, kontakt@openmedis.pl

Product code: MZ02390



The Simulator in the form of a cow's rump (female breeding cattle), natural dimensions, supported on a base with wheels. It allows for training and observation of palpation manipulation performed by the exercising person during the insemination procedure and examination per rectum.

Advantages:

- The set includes a complete artificial reproductive system, one easy cervix and a handpiece.
- Replaceable panel of the reproductive system, natural dimensions, with characteristic anatomical structures, mounted in the correct anatomical position in the simulator structure, suspended in the pelvic cavity in a manner imitating natural suspension, made of flexible materials imitating and providing realistic treatment sensations of living tissue - applies to external elements (vulva) and internal (cervical)
- The function of heating internal organs to a natural temperature.
- It is possible to adjust the model specification to the needs of a specific project

Specification:

- Length: approx. 95 cm
- Height: approx. 145 cm
- Width: approx. 50 cm
- Base dimensions: 82x76cm
- Weight: approx. 50 kg.

Additional parts available (additionally payable):

- Additional cervix (easy AI procedure),
- Additional cervix (Difficult AI procedure),
- Insemination gel,
- Silicone uterus,
- Extra uterus at different times of pregnancy
- Silicone vagina tube,
- The posterior part of the reproductive system,
- Tail
- Rectum
- Ovary small vesicles,
- Ovary large vesicles,
- ovarian cyst,



- Corpus luteum

Uterus of the cow, 1/3 life-size

Price inquiry: +48 605999769, kontakt@openmedis.pl

Product code: MZ02169



Three-enlarged, two-part model of the uterus together with the ovary of the cow. Shows all relevant anatomical structures.

* possible model realization on any scale

Model of a cow's udder

Price inquiry: +48 605999769, kontakt@openmedis.pl

Product code: MZ02551



This model enables students to understand the anatomy of a cow's udder and teat. The udder can be removed from the cradle for further study and study in the classroom.

Cow anatomical model, 13 parts

Price inquiry: +48 605999769, kontakt@openmedis.pl

Product code: MZ01911



Reduced-size model of a cow on the base. Intended for educational purposes for students. It has the ability to divide into 14 separate parts of the body and organs. The model presents the muscular structure of a breeding cow on one side, while on the other the outer structure (muscular) is visible. It is possible to divide the whole model in the sagittal section, thanks to which it presents the internal structure, including the digestive system, reproductive system and udder structure.

Removable parts: muscle leg*

2, stomach*3, liver and intestine*1, lung*1, uterus*1, heart*2, breast*1, tail*1, body*2

Additional features:

- Size: approx.: 91x35x55cm
- Weight: 20,5kg
- User manual
- Fully colored
- model on base

Cow anatomical model, 13 parts,

Price inquiry: +48 605999769, kontakt@openmedis.pl

Product code: MZ01878



Product information: Cow anatomical model, 13 parts

Reduced-size model of a cow on the base. Intended for educational purposes for students. It has the ability to divide into 13 separate parts of the body and organs. The model presents the muscular structure of a breeding cow on one side, while on the other the outer structure (muscular) is visible. It is possible to divide the whole model in the sagittal section, thanks to which it presents the internal structure, including the digestive system, reproductive system and udder structure.

Additional features:

- Size: approx.: 91x35x55cm
- Weight: 20,5kg
- User manual
- Fully colored
- model on base

Calf Model (Fresian)

Price inquiry: +48 605999769, kontakt@openmedis.pl

Product code: MZ02559



The Calf Model is a portable training dummy that can be used with the **Calving Simulator** to teach calving techniques. Modeled on the actual anatomy of a bovine calf, it simulates how a calf can be placed in the uterus. This allows students to experience both easy and complex procedures. The calf has internal bones in its hips and legs for accurate movement and skeletal boundaries. This provides a realistic challenge for the student to manipulate the position of the calf and to apply force during the birthing procedure.

Birthing Calf - Jersey

Price inquiry: +48 605999769, kontakt@openmedis.pl

Product code: MZ02575



The Calf Model is a portable training dummy that can be used with the **Calving Simulator** to teach calving techniques in the classroom. Modeled on the actual anatomy of a bovine calf, it simulates how a calf can be placed in the uterus. This allows students to experience both easy and complex procedures. The calf has internal bones in its hips and legs for accurate movement and skeletal boundaries. This provides a realistic challenge for the student to manipulate the position of the calf and to apply force during the birthing procedure.

Model of mammal limbs

Price inquiry: +48 605999769, kontakt@openmedis.pl

Product code: MZ02158



The model presents mammalian limbs:

- horse
- cow
- pig
- dog
- cat
- hare

Specifications:

- models are real bones
- delivered based on

*** photos are for reference only**

Cow Hoof Model, 2 parts

Price inquiry: +48 605999769, kontakt@openmedis.pl

Product code: MZ01881



Two-piece model of a cow's hoof, depicting the external and internal structure. Model on the base.

Dimensions: approx. 31x21x18cm

Weight: approx. 2.25-2.5kg.

Coccygeal Vein Blood Sampling Kit

Price inquiry: +48 605999769, kontakt@openmedis.pl

Product code: MZ03978



Model of a cow tail with artificial blood pump and lifelike coccygeal vein for practicing blood taking techniques.

Anatomically Correct Vertebrae and vein positioning have been replicated from real bovine anatomy, allowing students to palpate for the correct position. Blood Pump Blood is circulated through the vein by a small electronic pump to simulate the heart pumping. Needle Resistance When inserting the needle, a realistic resistance is felt under the skin. Bulging Vein When pressure is applied, the vein bulges for students to see where to insert the needle. Universal Stand Supplied with a sturdy metal stand which is to be clamped to a bench top, allowing the tail to hang down in a natural position. KIT INCLUDES

- 1 x Blood Sampling Tail with Coccygeal Vein Insert
- 1 x Blood Pump
- 1 x Jar of Artificial Blood

Cow milking model

Price inquiry: +48 605999769, kontakt@openmedis.pl

Product code: MZ02388



Full-size model of a cow with a milking training system.

Specification:

- material: plastic
- tank for pouring liquid for simulating milking, min. 5l
- udders made of silicone
- dimensions: 148x210cm
- weight: 40kg

Metri-Treating Model

Price inquiry: +48 605999769, kontakt@openmedis.pl

Product code: MZ03813



A model to teach students to detect cows with endometritis and treat uterine infections.

Students can identify at-risk cows at calving time and treat any uterine infections with antibiotics. Students can learn to identify at-risk and infected cows and treat them to increase reproductive and economic performance. Students should be able to recognise each body part of the cow through feel and diagnose endometritis with the detecting device. Anatomically correct uterine and horns, vaginal tract, cervix, vulva and rectum of the cow. The Metri-Treating Model is a standalone tabletop setup for easy classroom learning and transportation. The Metri-Treating Model packs down into separate components for easy compact travelling and set-up is just as easy. Silicone components and Holsim Sim Poo create a lifelike tactile experience for the user. This product was developed in conjunction with Agri-Health NZ. Specifications **Anatomically Correct**

- Replicated the uterine and horns, vaginal tract, cervix, vulva and rectum of the cow.

Standalone Rig

- Easy table top rig for easy classroom learning and transportation.

Packs Down

- The Metri-Treating Model packs down into separate components for easy compact travelling and set up is just as easy.

Realistic Feel

- Silicone components and Holsim Sim Poo create a lifelike tactile experience for the user.

Cow uterus model

Price inquiry: +48 605999769, kontakt@openmedis.pl

Product code: MZ01886



Life-size model of the cow uterus on the base. It has one detachable part, the detachment of which reveals the internal structure.

Additional information:

- dimensions: approx. 80x31x23cm
- Weight: approx. 4.5kg

Cow Kidney

Price inquiry: +48 605999769, kontakt@openmedis.pl

Product code: MZ01887



Cow kidney model on the base. It has the ability to present internal structures to present the internal structure.

Dimensions: approx. 40x22x15,5cm, Weight: approx. 1.7-2 kg.

Half-Carcass beef (bull) model, natural size

Price inquiry: +48 605999769, kontakt@openmedis.pl

Product code: MZ02397



The life size model showing a beef half-car carcass on a base. The individual parts of the model were divided according to the DLG classification - "simplified DLG cutting method".

The model is divided into 12 parts in total, such as:

- - hind shank
 - round
 - loin
 - tenderloin
 - flank
 - plate
 - chuck
 - neck
 - brisket
 - shoulder
 - fore shank

Specification:

- Height approx. 220 cm
- Weight approx. 20 kg (+ -10%)

Additional information:

- Option: Additionally, the model may have a dashed line in order to present the essential elements according to division recommend in your country:
- It is possible to make a model in any dimensions (individual valuation)
- We can customize this model to your specification



Butcher Beef Cut Models, 1:2

Price inquiry: +48 605999769, kontakt@openmedis.pl

Product code: MZ03098



The life-like **Butcher Beef Cut Models** are a set of four separate, quartered section models. These include Round, Loin, Rib, and Chuck from half of a steer. This set of models are one-half the size of a steer and feature 21 magnetic models depicting the most popular cuts of beef. Use the butcher beef cut models to identify various cuts as well as learn how to prep and cook each.

Contents:

- 21 individual beef cuts,
- Chuck (5 pieces),
- Ribs (4 pieces),
- Loin (7 pieces),
- Round (5 pieces),
- Presentation slides,
- Quick Start Guide,
- Downloadable curriculum,
- 1-year limited warranty.

Specifications:

- Dimensions: 71 x 51 x 51 cm
- Weight: 23 kg

Cloven hoof model

Price inquiry: +48 605999769, kontakt@openmedis.pl

Product code: MZ03893



A life-size bone model of a cattle foot, made of natural (prepared) materials, similar to the average size of domestic cattle feet. Bones prepared by maceration of soft tissues with enzymes of proteolytic bacteria. The model should be anatomically correct, stiffened and stabilized on the base. The individual bones are rigidly connected with each other by means of screws and wires.

Cow skeleton model, artificial, 1:2 natural dimensions

Price inquiry: +48 605999769, kontakt@openmedis.pl

Product code: MZ03475

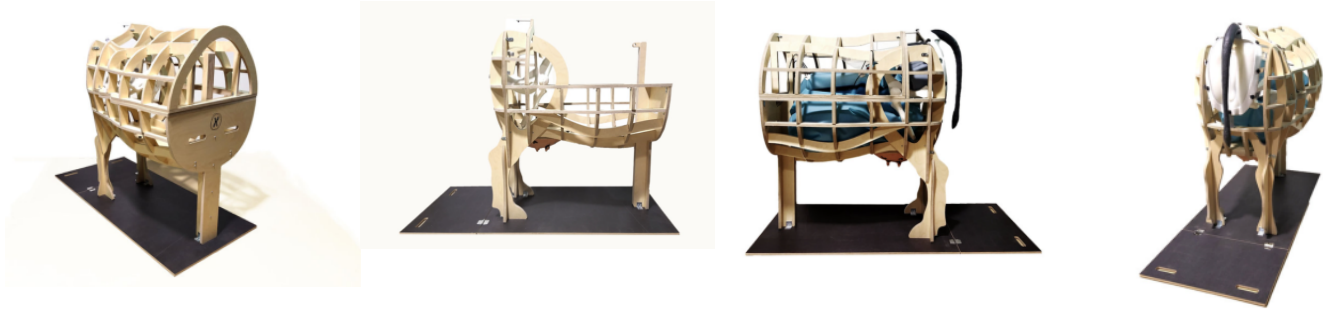


1:2 scale model of a breeding cattle skeleton. Made of artificial material. It has a length of approx. 80cm

Interlocking Bovine

Price inquiry: +48 605999769, kontakt@openmedis.pl

Product code: MZ03977



Holsim's Interlocking Bovine is a flat-pack, transportable training mannequin for classroom teaching of calving techniques. This interlocking birthing cow is made from premium grade plywood pieces that slot and bolt together for easy setup and pack down.

Veterinary students are provided with the opportunity to experience the calving process in a controlled environment with clear assessment and feedback from the tutor. Once the student has this initial training, they are well prepared to get the most out of live animal training and the experiences that follow. The top cage of the bovine is easily lifted off to set up and pack down the uterus bag, calf, etc. Both the Holsim Milking Udder and Cupping Udder are compatible with this model and can be bolted onto the underside of the bovine for practising milking, mastitis treatment applications and cupping. The interlocking bovine has carry handles on both the hinged base and the front of the bovine for moving it easily.

Cow Udder Model

Price inquiry: +48 605999769, kontakt@openmedis.pl

Product code: MZ01880



A fully colored, detailed model is mentioned on the basis. It presents the internal and external structure of the udder.

Additional information:

- Size: approx. 51x44 x 26cm
- Weight: approx. 7 kg
- Teacher's guide

Udder of the Cow, natural size

Price inquiry: +48 605999769, kontakt@openmedis.pl

Product code: M01731



The cow udder model separates into 4 parts in sagittal and vertical section, showing the arteries, veins and milk passages and the four glandular regions. Removable. On a stand with wooden base.

Dimension: 33x24x29cm

Weight : apporx. 4kg

The stomach model of the Cow, 1/3 natural size, 3 parts

Price inquiry: +48 605999769, kontakt@openmedis.pl

Product code: M01732



Rumen and reticulum can be divided into two halves to show the relief of the mucous membrane of the stomach. Omasum and abomasum can be opened up. Separates into 3 parts.

Ruminant stomach model

Price inquiry: +48 605999769, kontakt@openmedis.pl

Product code: MZ01885



The not much reduced model provides a detailed and practical look at the four ruminant stomach compartments. It is slightly smaller than the real stomach of a ruminant. The model separates in the middle line, revealing internal structures. Includes 3 removable parts.

Main advantages:

- Presents the external and internal structure of the ruminant's stomach (including four compartments)
- Full-colored, textured details
- 2 fully detachable parts
- The cross-section begins in the centerline

Additional information:

- Dimensions: approx. 28x18x35cm
- Weight: approx. 1.13kg

Bovine Fetal Development Models, 8 models

Price inquiry: +48 605999769, kontakt@openmedis.pl

Product code: MZ02395



The realistic models depict cattle fetuses at various stages of development. The stages include the corpus luteum and fetus at 1, 2, 3, 5, and 7 months of age. All eight models have realistic functions, dimensions and design.

Specifications:

- 7-8 Month Model Dimensions: 61 x 21x 33.cm
- 5-6 Month Model Dimensions: 36 x 12 x 23cm
- 3-4 Month Model Dimensions: 16 x 1 4,5 x 8cm
- 2 Month Model Dimensions: 6,5x 2,5 x 4cm
- 1 Month Model Dimensions: 1,25 x 1 x 1,3cm

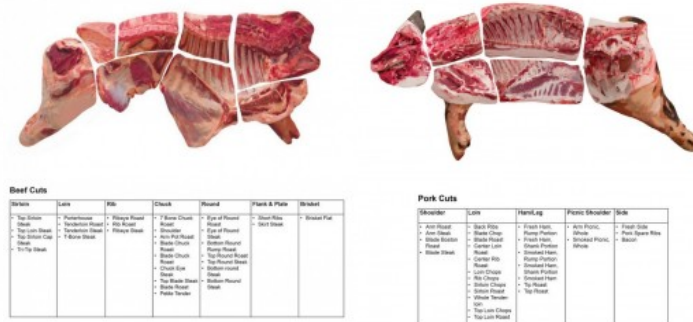
Package includes:

- 3 corpus luteum models
- 5 bovine fetal development models (1, 2, 3, 5 and 7 months)
- Online access to curriculum
- 1-year limited warranty

Beef and Pork 3D Meat Cuts Poster

Price inquiry: +48 605999769, kontakt@openmedis.pl

Product code: MZ02281



A convex board (3D) showing the division of beef and pork carcass into the main culinary elements. Includes realistic and full-color details.

Size: 74x99x4.5cm

3D Anatomy Chart - Cow Anatomy

Price inquiry: +48 605999769, kontakt@openmedis.pl

Product code: MZ01883



3D anatomical board, which separates and opens in the middle part, showing 3 separate anatomical illustrations of a cow:

- external structures,
- skeleton,
- internal organs and reproductive system.

The board presents a cow in 1/6 of the size of natural size.

Additional information:

- Dimensions: 46 x 102 x 82cm
- Weight: about 16kg
- The set includes a tripod on wheels

Cow front leg, 1/3 life size

Price inquiry: +48 605999769, kontakt@openmedis.pl

Product code: MZ02170



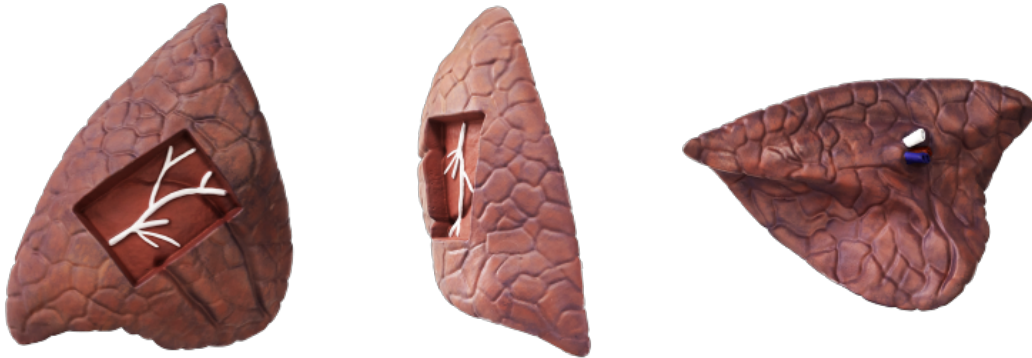
Three times reduced cow hind leg model. Shows all relevant anatomical structures.

* possible model realization on any scale

Cow lung, 1/3 life size

Price inquiry: +48 605999769, kontakt@openmedis.pl

Product code: MZ02167



Three-fold, one-piece cow lung model. Shows all relevant anatomical structures.

*possible model realization on any scale

Cow heart, 1/3 life size

Price inquiry: +48 605999769, kontakt@openmedis.pl

Product code: MZ02166



Three times reduced cow's heart model. It is divided into two parts. Shows all relevant anatomical structures.

*possible model realization on any scale

Bovine hoof bandage simulator

Price inquiry: +48 605999769, kontakt@openmedis.pl

Product code: MZ04013



The dressing simulator for cattle hoofs offers the opportunity to learn the correct application of dressing materials and techniques.

The cattle claw can be rotated on the tripod, allowing you to practice on a standing or lying cow. A table clamp is included and guarantees a secure attachment option.

Calf simulator

Price inquiry: +48 605999769, kontakt@openmedis.pl

Product code: AM02558



The Calf Model is a portable training dummy that can be used with the **Calving Simulator** to teach calving techniques in the classroom. Modeled on the actual anatomy of a bovine calf, it simulates how a calf can be placed in the uterus. This allows students to experience both easy and complex procedures. The calf has internal bones in its hips and legs for accurate movement and skeletal boundaries. This provides a realistic challenge for the student to manipulate the position of the calf and to apply force during the birthing procedure.

Cow artificial insemination simulator/Bovine Breeder

Price inquiry: +48 605999769, kontakt@openmedis.pl

Product code: MZ01884



Life-size simulator for bovine insemination is a unique scientific aid that helps in learning and improving:

- correct artificial insemination techniques,
- cervical manipulation,
- positioning with an insemination gun,
- recognition of anatomical landmarks of the reproductive system
- palpation of luteal development and pregnancy.

Product dimensions:

- approx. 81x46x71cm
- Product weight: approx. 11.5kg

Set contains:

- Realistic hindquarters (hindquarters) of cows and reproductive system for learning the right techniques of artificial insemination
- Removable cover (available in brown or black and white) for training with or without visual guidance.
- Simulator with removable cervix and the cover of the reproductive system
- Digestive tract
- Latex-free shoulder gloves (100 pieces)
- Insemination pistol
- Models of development of the corpus luteum
- Models of fetal development

Additional information:

- The simulator is compact, lightweight, has folding functions.
- Easy to carry



Milking Udder

Price inquiry: +48 605999769, kontakt@openmedis.pl

Product code: MZ03961



Model to teach milking, cupping and teat sealing techniques.

Students can practise the technique of pulling and producing milk from the teats in a controlled environment with a clear assessment from the tutor before advancing into the field. Students can also learn how to treat mastitis in the teats. The udder is made with moulded plastic, and each teat is removable for cleaning and maintenance. The udder can be filled with 'milk' for training. There are two types of teats: pink for use with milking training, and clear, for teaching teat sealing techniques. The clear silicone allows students to see how far up into the teat the syringe is inserted and antibiotics are applied. The udder is mounted on high-grade plywood stand for tabletop use.

Cow Milking trainer

Price inquiry: +48 605999769, kontakt@openmedis.pl

Product code: MZ01879



A realistic simulator imitating a cow's udder, intended for educational purposes.

Application:

- Learning how to properly milk cow's milk,
- Learning of udder care,
- Learning to treat and prevent infection
- Learning to do a mastitis test
- Learning udder anatomy
- Learning how to properly connect a milking machine

Additional information:

- The simulator is equipped with four separate chambers that can be filled with liquid.
- Foldable rear "legs" with stand
- Transport bag
- Instructions
- Dimensions: approx. 94 x 74 x 76cm
- Weight: approx. 18-23kg

Bovine Vascular Access Simulator

Price inquiry: +48 605999769, kontakt@openmedis.pl

Product code: MZ01882



A full-size trainer for cattle injection is a unique teaching tool with versatile and multitasking application. The vascular access simulator is engineered to provide the most anatomically correct and realistic simulated venipuncture training experience available. The vascular access simulator delivers excellence in veterinary training.

The simulator enables training, among others following procedures:

- cervical injections,
- intravenous injections,
- intramuscular injections,
- subcutaneous injections,
- piercing placement
- implant placement

Set contains:

- Cow head with neck - life size
- Removable training covers that map specific body orientations for the correct injection sites
- A drain system for liquids
- Stand with wheels
- Foot pump for pulse imitation
- Exchangeable ears - 10 pairs

Additional information:

- size: approx. 71x102x173cm
- Weight: approx. 18kg

Hereford Model Dystocia Simulator

Price inquiry: +48 605999769, kontakt@openmedis.pl

Product code: M01688



Dystocia simulator for the Hereford breed.

Main features:

- Steel reinforced epoxy/fiberglass construction, with water resistant components throughout for ease of cleaning.
- 1.36m at the shoulder and over 2.44m from nose to tail, and 0.8m at widest point
- Matching Hereford calf included
- Inflatable calf air bed support system
- Clear vinyl uterine bag
- Soft, durable perineum panel
- Soft removable tail
- Functional udder with milk tank; ability to simulate mastitic milk and can be introduced in any quadrant
- Replica polyurethane pelvis
- Padded fetal extractor, obstetric chain and head snare
- Landing mat provided to prevent damage to calf

Replaceable Parts:

- Birthing Perineum Panel
- Uterine Bag
- Tail
- Teats
- Calf

Holstein Model Dystocia Simulator

Price inquiry: +48 605999769, kontakt@openmedis.pl

Product code: M01689



Dystocia simulator for the Holstein breed

Main features:

- Steel reinforced epoxy/fiberglass construction, with water resistant components throughout for ease of cleaning.
- 1.57m at the shoulder and over 2.80m from nose to tail, and 1m at widest point
- Matching Holstein calf included
- Inflatable calf air bed support system
- Clear vinyl uterine bag
- Soft, durable perineum panel
- Soft removable tail
- Functional udder with milk tank; ability to simulate mastitic milk and can be introduced in any quadrant
- Replica polyurethane pelvis
- Padded fetal extractor, obstetric chain and head snare
- Landing mat provided to prevent damage to calf

Replaceable Parts:

- Birthing Perineum Panel
- Uterine Bag
- Tail
- Teats
- Calf

Compact Model Dystocia Simulator

Price inquiry: +48 605999769, kontakt@openmedis.pl

Product code: M01690



Realistic performed, modeled on the Hereford breed, a compact dystocia simulator.

Main features:

- Steel reinforced epoxy/fiberglass construction, with water resistant components throughout for ease of cleaning.
- 0,65m tall and over 1,3m long, and 0.8m at widest point
- Matching Hereford calf included
- Inflatable calf air bed support system
- Clear vinyl uterine bag
- Soft, durable perineum panel
- Soft removable tail
- Functional udder with milk tank; ability to simulate mastitic milk and can be introduced in any quadrant
- Replica polyurethane pelvis
- Padded fetal extractor, obstetric chain and head snare
- Landing mat provided to prevent damage to calf

Replaceable Parts:

- Birthing Perineum Panel
- Uterine Bag
- Tail
- Teats
- Calf

Cow and Pig Ear Simulation

Price inquiry: +48 605999769, kontakt@openmedis.pl

Product code: MZ03966



Proper ear care and identification while providing safe, consistent ear tagging and notching practice with our Cow and Pig Ear Simulation. All ears are removable and replaceable, featuring a realistic look and feel.

Contents

- Cow head model
- Cow ears (50 pairs)
- Pig head model
- Pig ears (100 pairs)
- Storage box
- Downloadable curriculum

Note: Does NOT include ear tagging or notching tools and ear tags

Calving simulator

Price inquiry: +48 605999769, kontakt@openmedis.pl

Product code: MZ02550



This model is intended for veterinary students to experience the calving process in a cow. Thanks to controlled conditions, students can make mistakes and finally be fully prepared to work with live animals.

Calving simulator / Bovine Birthing and Ultrasound Simulator

Price inquiry: +48 605999769, kontakt@openmedis.pl

Product code: MZ02394



The calving simulator is a practical tool for training a cow's delivery reception and carrying out ultrasound examinations. This compact trainer can be placed on a table at the correct height so that pupils / students can practice pulling the calf out of the birth canal with the help of straps. Flexible, realistic, close to the natural weight and dimensions, the calf model is made of material, which ensures durability and usability. The ultrasound simulator uses sensing technology to simulate more 14 ultrasound situations. It has the ability to diagnose pregnancy and common problems.

Set contains:

- A portable birthing simulator
- Removable reproductive tract
- Model of a birthing calf
- Delivery tools: straps and hand
- **Ultrasound simulator:** probe and tablet,
- storage bag

Simulation:

- Cow anatomy
- Basics of cattle breeding
- Proper techniques of ultrasound diagnosis
- Own your birthing techniques
- Abnormalities in childbirth

Advantages:

- Features of the calf simulator
- Realistic calf and birth panel of a pregnant cow
- Table model
- Removable cover
- Flexible, replaceable scabbard Flexible, realistic tail
- The legs of the calf and hooves are naturally mobile
- Realistic pelvic bones creating more accurate birth scenarios
- Spare parts available
- Functions of the simulator for ultrasound diagnostics
- It enables you to understand the stages of a bovine pregnancy, stages and birth scenarios



- Teaching the practical use of ultrasound diagnostics during pregnancy in domestic cattle
- Provides a visual representation of the corpus luteum and follicular cysts, as well as general pregnancy diagnostics
- It includes 14 simulated situations to find and practice ultrasound technique Includes exercise and scenario modes

Specification:

- Calf dimensions: 92x31x41cm
- Calf weight: approx. 12 kg
- Ultrasound trainer dimensions: 76x76x64cm
- Weight of the ultrasound trainer: approx. 23kg

Bovine theriogenology model

Price inquiry: +48 605999769, kontakt@openmedis.pl

Product code: MZ02288



A phantom in the form of a rear part (croup) for rectal examination containing organs of the reproductive system of female breeding cattle. Intended for practices and sciences in the field of theriogenology, that is dealing with reproduction, including the physiology and pathology of the female reproductive systems of animals and the clinical practice of veterinary obstetrics, gynecology and andrology.

Specification:

- fiberglass phantom construction
- includes pelvis and soft perineal palpation panel,
- inflatable vinyl rectum and flexible tail
- cervix, broad ligament, ovaries
- Different ovaries with different stages of follicles and corpus luteum
- The phantom enables: learning the anatomy of the reproductive system, studying the oestrus cycle stages (per rectum), testing the stage of 45, 60, 90-day pregnancy (per rectum), learning insemination
- Weight: approx. 25 kg
- Approximate dimensions: approx. 65 x 66 x 65 cm (L x W x H)

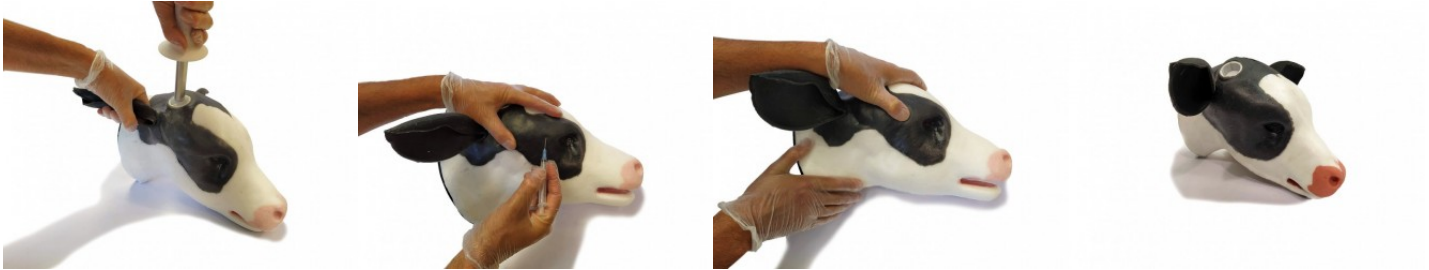
Spare parts (optional, additionally payable):

- perineal palpation panel
- tail
- uterus at 45, 60 and 90 days of pregnancy, respectively

Calf Disbudding Kit

Price inquiry: +48 605999769, kontakt@openmedis.pl

Product code: AM02574



The trainer allows you to learn how to perform disbudding, remove horn buds and learn local anesthesia during the above-mentioned procedures. It is possible to learn the correct position of the nerve and inject the drug at the right angle and to the right depth. When a nerve is touched with a needle, a buzzer sounds and the LED light changes color. Once you have mastered the blockades, you can practice decorating the calf. The head of the calf has a realistic look with a hard skull, soft neck and soft reinforced ears.

Bovine Venipuncture and Intramuscular Injection Simulator

Price inquiry: +48 605999769, kontakt@openmedis.pl

Product code: MZ04041



The practical **veterinary simulator** for learning and training intravenous and intramuscular injections performing in cattle. The training set includes:

- **the cow head model** made of realistic and durable materials
- the tripod on wheels with the possibility of adjusting the height of **the bovine head model**

The application of the bovine head simulator for venocentesis and intramuscular injections:

Due to its numerous and unquestionable advantages, a teaching aid in the form of a **bovine head model** is an ideal equipment for veterinary laboratories and labs for acquiring practical clinical skills. **The cattle injection trainer** allows to shape and develop the following skills:

- learning anatomy and locating characteristic landmarks
- learning the location of cervical vessels and their injection
- performing the intramuscular injections and ear tagging

The presented **model of a cattle head** allows to acquire practical skills before starting work on a living organism, which reduces the stress of future veterinarians and technicians, as well as the animals themselves

Technical specification:

- The metal Rolling Stand
- Durable Silicone with metal armature
- Removable head for ease of transportation, and replacement of components
- Removable/washable hide covering. Can be replaced when worn

-

Comes with 5 sets of replacement vein

Product features:

Jugular Venipuncture:

-

Using anatomical landmarks, students will learn to seclude and palpate veins

-

Endures multiple punctures and includes 5 sets of replacement veins

-

Pressurized blood bag included

-

Replaceable hide covering to conceal injection sites and blood draw site

Intramuscular Injection Site:

-

Well rendered anatomy illustrates injection landmarks

-

Accepts fluid injections and can endure multiple punctures

Soft Silicone Head:

-

Removable and replaceable ears for tagging

Rolling Stand:

-

Adjustable for height, rostral tilt, 90 degree rotation

Replaceable parts:

-

Veins

-

Intramuscular pads x2

-

Hide covering

-

Pressurized Blood bag

-

VSI Blood

-

Replacement Ears

The advanced **veterinary simulators** are the future of education. We also offer other teaching aids, such as: **animal anatomical models** (cow model, mare model, pig model, sheep model, etc.). Among the virtual solutions supporting learning, a new, **advanced platform for learning veterinary anatomy** should be mentioned, enabling detailed visualization of the cow anatomy from the external integuments to the skeleton. Our wide range includes various **cattle trainers and veterinary phantoms** from proven and recognized brands on the market. The most popular **veterinary trainers** include cattle theriogenological models that allow for teaching cows rectal contraction, palpation and recognition of pregnancy as well as ovarian pathology and insemination. Our offer also includes **bovine simulators** specifically intended for learning and training insemination (e.g. Emma Cow). The most advanced **cattle veterinary simulators** include teaching aids enabling calving simulation.

Mastitis Udder Kit

Price inquiry: +48 605999769, kontakt@openmedis.pl

Product code: MZ03963



Designed to be used with the Bovine for teaching mastitis treatment techniques in cattle.

Mastitis Udder Kit Includes:

- Vacuum Formed Udder
- Clear Teats x 4
- Mounting Rings x 4
- Teat Fasteners
- Knurl Screws x 4

Horn embro for disbudding

Price inquiry: +48 605999769, kontakt@openmedis.pl

Product code: AM02548



These disposable horn buds allow you to practice horn sensing and skin cutting. A soft silicone cover surrounds a 3D-printed horn and a foam support ring.

The standard package contains 10 the ovules of the horns.

Set of 9 different bovine cervicals to learn how to inseminate

Price inquiry: +48 605999769, kontakt@openmedis.pl

Product code: MZ02520



The Bovine AI Cervix Training Kit contains nine bovine cervixes that allow for hands-on training of artificial insemination. The cervixes range from young bovine first-time reproduction to larger cervixes which represent older bovine reproductive tracts. Additionally, these cervixes are compatible with the artificial insemination simulator MZ01884.

Milking Udder Kit

Price inquiry: +48 605999769, kontakt@openmedis.pl

Product code: MZ03962



Designed to be used with the Bovine for teaching milking techniques.

Mastitis Udder Kit Includes:

- Vacuum Formed Udder
- Pink Teats x 4
- Mounting Rings x 4
- Teat Fasteners
- Knurl Screws x 4

Metri-Treating Kit

Price inquiry: +48 605999769, kontakt@openmedis.pl

Product code: MZ03964



Designed to be used in conjunction with the simulator for simulating endometritis treatment techniques in cattle.
Metri-Treating Kit Includes:

- G-Tract A (Shroud, rump, etc.)
- Uterine Horns with Stretchy V
- Rectum Bag & Clamp
- Bungee & Carabiner Kit
- Knurl Screws x 3

Animal tooth model set

Price inquiry: +48 605999769, kontakt@openmedis.pl

Product code: MZ01983



A set of tooth models, dissected bones. It is possible to choose a set depending on the customer's needs: cattle, horse, pig, dog, cat, etc. Production time approx. 3 months.