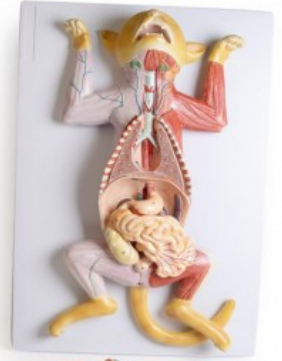


## Dissection model of a pregnant cat

**Price inquiry:** +48 605999769, [kontakt@openmedis.pl](mailto:kontakt@openmedis.pl)

Product code: MZ03783

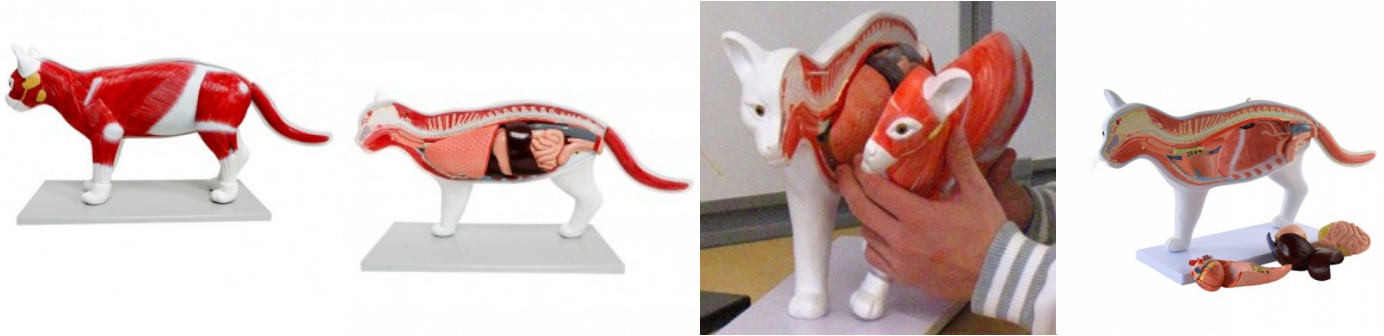


This model of a skinned cat is an excellent addition to the practical preparation and provides a simple visualization of the superficial muscles. This 9-piece model contains removable internal organs such as liver, heart, lungs and stomach. In the right uterine horn, a fetus is depicted. Numbered key included. On basis. Size: 39 x 53 x 17.8 cm, i.e. approximately life-size.

## Disassemblable Anatomical Cat Model, 11 parts

**Price inquiry:** +48 605999769, [kontakt@openmedis.pl](mailto:kontakt@openmedis.pl)

Product code: M01674



This anatomical model visualises the muscular and some skeletal structures as well as the internal organs of a cat. It can be removed and partially disassembled in order to provide a malleable representation and excellent assessment of the individual organs.

### The Following Organs can be Removed:

- Lungs
- Liver
- Heart (disassemblable)
- Stomach (disassemblable)
- Colon with pancreas
- Rectum with bladder (disassemblable)

### More details:

- Disassemblable model of a cat (life-size)
- Some organs can be removed and taken apart
- With removable tail
- Cat dimensions (L x W x H): **approx. 62 x 13 x 29 cm** (mounted)
- Base dimensions (L x W x H): **approx. 43 x 19.5 x 1.5 cm**