

Dissection model of a pregnant cat

Price inquiry: +48 605999769, kontakt@openmedis.pl

Product code: MZ03783



This model of a skinned cat is an excellent addition to the practical preparation and provides a simple visualization of the superficial muscles. This 9-piece model contains removable internal organs such as liver, heart, lungs and stomach. In the right uterine horn, a fetus is depicted. Numbered key included. On basis. Size: 39 x 53 x 17.8 cm, i.e. approximately life-size.

Cat skull in plastic block

Price inquiry: +48 605999769, kontakt@openmedis.pl

Product code: M01370



Real cat skull embedded in unbreakable plastic. Embedding the skull makes it hygienic and protected. Perfect as demonstration object.

Skull, wild cat (*Felis silvestris*)

Price inquiry: +48 605999769, kontakt@openmedis.pl

Product code: MZ03086



High quality skull reproduction.

The advantages:

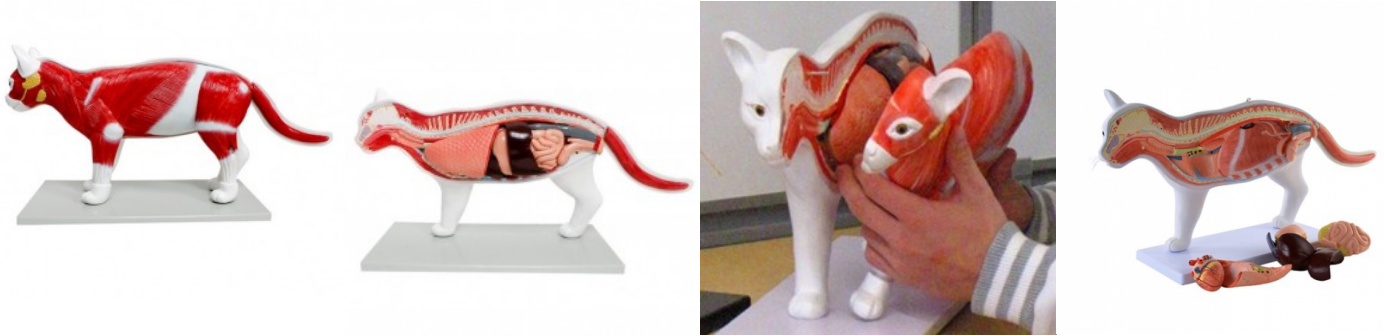
- 2 part model,
- lower jaw removable.

Skull length appr. 9,7cm.

Disassemblable Anatomical Cat Model, 11 parts

Price inquiry: +48 605999769, kontakt@openmedis.pl

Product code: M01674



This anatomical model visualises the muscular and some skeletal structures as well as the internal organs of a cat. It can be removed and partially disassembled in order to provide a malleable representation and excellent assessment of the individual organs.

The Following Organs can be Removed:

- Lungs
- Liver
- Heart (disassemblable)
- Stomach (disassemblable)
- Colon with pancreas
- Rectum with bladder (disassemblable)

More details:

- Disassemblable model of a cat (life-size)
- Some organs can be removed and taken apart
- With removable tail
- Cat dimensions (L x W x H): **approx. 62 x 13 x 29 cm** (mounted)
- Base dimensions (L x W x H): **approx. 43 x 19.5 x 1.5 cm**

House cat skull model, replica

Price inquiry: +48 605999769, kontakt@openmedis.pl

Product code: MZ02011



A detailed model of the cat's skull made in 1: 1 scale. Length approx. 10cm

Feline skull with movable jaw

Price inquiry: +48 605999769, kontakt@openmedis.pl

Product code: M01668



Detailed plastic casting of a cat skull. The jaw is flexibly mounted for excellent movement demonstration.

Size: 12 x 12 x 11cm

Cat Skull with removable mandible

Price inquiry: +48 605999769, kontakt@openmedis.pl

Product code: M01369



Replica of a cat skull (*Felis catus*), Length: ca. 9.7 cm.

Feline Pelvis

Price inquiry: +48 605999769, kontakt@openmedis.pl

Product code: MZ02818



This average sized feline skeleton shows: thighs, lumbar vertebrae L6, L7, caudal vertebrae and spinal cord. Osteophytes indicate degenerative osteoarthritis of the hip joint. Size: 18x11x6.5cm

Feline Heart/Lung

Price inquiry: +48 605999769, kontakt@openmedis.pl

Product code: MZ03024



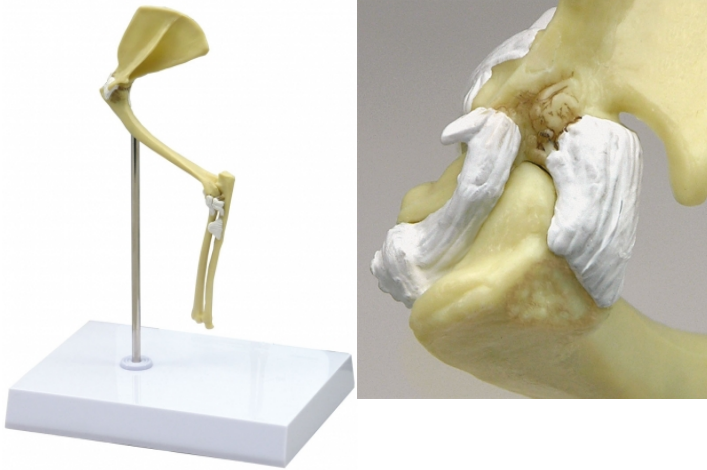
Average feline heart and lungs infested with a single heartworm (*dirolaria immitis*). Cutaway view demonstrates structures in the heart (right ventricle, pulmonary trunk, pulmonary arteries and lungs) where adultstage heartworms are normally found. The cut section of thee lung indicates patches of heartworm-induced irritation.

Size: 9.5 x 7 x 6 cm

Feline Elbow/Shoulder

Price inquiry: +48 605999769, kontakt@openmedis.pl

Product code: M01290



Average size elbow and shoulder features: normal bone and osteoarthritic changes to joints. Model includes the following bones: scapula, humerus, radius, ulna and ligaments and tendons as:

- annular ligament
- lateral collateral ligament
- interosseous ligament
- lateral glenohumeral ligament
- tendon of brachioradialis
- biceps tendon

Size: 20 x 10 x 2.5 cm

Feline Jaw Model

Price inquiry: +48 605999769, kontakt@openmedis.pl

Product code: M01678



Product information: Feline Jaw Model

This anatomical model shows the jaw of an average sized cat in healthy and diseased condition.

- Jaw can be opened and disassembled
- Shows: healthy teeth, broken canine tooth, periodontitis, calculus, plaque, gingivitis, worn down incisors, retained deciduous tooth, missing premolar
- Size (L x H x W): 6 x 5 x 5,5 cm
- Weight: 0,12 kg

The Feline Jaw Model shows the following:

- Healthy teeth (right half)
- Broken canine
- Periodontal disease
- Tartar
- Plaque
- Gingivitis
- Worn incisors
- Impacted milk teeth
- Missing premolars

Feline Jaw

Price inquiry: +48 605999769, kontakt@openmedis.pl

Product code: M01357



Average size feline jaw depicts healthy teeth on the right side and diseased/ damaged teeth on the left. The eight pathologies featured are: fractured canine, periodontal disease, tarter accumulation, plaque, gingivitis, worn incisors, retained deciduous tooth and missing premolar. The jaw may be opened, closed and separated for closer study.
Size: 7 x 5 x 3 cm

Feline Skeleton Specimen

Price inquiry: +48 605999769, kontakt@openmedis.pl

Product code: M01650



A skeleton model of a cat on a wooden base. It is an excellent didactic aid, it is used for demonstration purposes.

Additional features:

- dimensions: 33x9x16cm
- has individual bones numbered
- model supplied with a plastic protective cover

Feline CPR Manikin Fluffy

Price inquiry: +48 605999769, kontakt@openmedis.pl

Product code: M01643



The manikin has realistic working lungs and an artificial pulse. Students learn to perform feline compressions and mouth-to-snout resuscitation. It is also designed to splint and allow bandaging. Parts can be cleaned and are disposable.

Accessories include a carrying case and 5 disposable lungs. Face shields are sold separately.

Clear Feline Jaw

Price inquiry: +48 605999769, kontakt@openmedis.pl

Product code: M01288



Product information "Clear Feline Jaw" Healthy feline hinged jaw showing all teeth with roots (incisors, canine, premolars, molars). Jaws open, close and separate for closer study.

Size: appr. 6 x 2.5 x 3 cm

Cat Catheterization Simulator (Male)

Price inquiry: +48 605999769, kontakt@openmedis.pl

Product code: MZ02560



This cat model allows you to practice correctly inserting the urinary catheter.

Main Features:

- The cat has an inner sheath with a bladder, pelvic bone and penis surrounded by soft foam.
- There is a removable suture block on the back of the cat, with silicone mesh reinforcement, which allows the catheter to be sewn onto the skin.
- You can fill your bladder with water from the fill tube on the back of the stand.
- The foreskin can be folded back to expose the penis for catheter insertion.
- The model can be attached to a desk or table and has non-slip rubber feet to prevent shifting during the procedure.

Cat skeleton, unassembled

Price inquiry: +48 605999769, kontakt@openmedis.pl

Product code: MZ03093



Our animal bone specimens are made by well-known taxidermists following all animal protection and hygienic laws. We do not sell cheap and ethically dubious specimens from Eastern Europe or China.



Cat skeleton, assembled

Price inquiry: +48 605999769, kontakt@openmedis.pl

Product code: MZ03092

Our animal bone specimens are made by well-known taxidermists following all animal protection and hygienic laws. We do not sell cheap and ethically dubious specimens from Eastern Europe or China.

Detailed model of the feline jaw

Price inquiry: +48 605999769, kontakt@openmedis.pl

Product code: AM01677



Product information: Detailed model of the feline jaw

The **transparent feline jaw** provides a detailed visualisation of the healthy dentition of a cat.

The See-Through Cat Dentition Shows:

- Incisors
- Canines
- Premolars
- Molars
- Roots of each tooth

The cat jaw can be opened and closed for precise observation of the teeth and the upper and lower jaws can be taken apart for individual inspection. This jaw model is used in veterinary clinics and practices to explain the structure of the cat's jaw to the patient owners, as well as to clarify current problems and possible treatments.

More details:

- Transparent model of a cat's jaw
- Illustration of the incisors, canines, premolars and molars
- Individual roots are recognisable
- Model can be opened and closed
- Upper and lower jaws can be taken apart
- Dimensions (H x W x D): approx. **7 x 5.1 x 2.8 cm**
- The transparent cat jaw is made from high-quality plastic.

Replaceable block for cat catheterization simulator

Price inquiry: +48 605999769, kontakt@openmedis.pl

Product code: MZ02561



Suture block designed for use with the **Catheterization Simulator**.

- It snaps into place magnetically.
- It has a silicone mesh reinforcement, which enables sewing the catheter to the skin
- For more information or to purchase a feline male urinary catheter model please [click here](#).

Advanced Feline CPR Manikin / Critical Care Fluffy

Price inquiry: +48 605999769, kontakt@openmedis.pl

Product code: M01393



A full-sized, realistic, cat mannequin designed for learning CPR and anesthesia training and features mouth-to-snout rescue breathing, endotracheal tube placement, manual ventilation, and chest compressions. Has the following organs / structures:

- trachea
- esophagus
- epiglottis
- tongue
- articulated jaw
- working lungs

It enables learning to perform various CPR techniques. It also allows veterinarian learning to bandage and venipuncture.

Set contains:

- carrying case,
- artificial training blood,
- IV reservoir,
- IV holder,
- 5 disposable lungs,
- endotracheal tube
- syringe.



Abdominal organs replacement kit for Cat Surgical Simulator

Price inquiry: +48 605999769, kontakt@openmedis.pl

Product code: MZ02350



The kit includes:

- digestive system
- urinary tract
- liver