

## Ultrasound Vascular Access Trainer

**Price inquiry:** +48 605999769, [kontakt@openmedis.pl](mailto:kontakt@openmedis.pl)

Product code: SM03644



An echolucent and contoured slab with representation of the jugular vein for teaching needle insertion under ultrasound.

### SKILLS GAINED

- Use of ultrasound technology
- Handling ultrasound transducers
- Insertion of needles under ultrasound guidance
- Handling and management of guidelines and catheters under ultrasound
- Recognition of vessels using ultrasound

### OVERVIEW

- Vein is self sealing for repeated use and rechargeable with water via a one-way valve
- Designed to be used on the bench top

### REALISM

- Echolucent material provides realistic ultrasound image

### VERSATILITY

- Fluid volume and pressure can be changed in the vessel to represent variability in patient circulation, providing various levels of difficulty for needle insertion

### CLEANING

- Skin washable with soap and water

### SAFETY

- Contains latex

### CONTAINS

- Ultrasound Vascular Access Slab
- Base unit
- 10 ml syringe

## Injection Trainer

**Price inquiry:** +48 605999769, [kontakt@openmedis.pl](mailto:kontakt@openmedis.pl)

Product code: SM03640



Our soft tissue injection pad is designed for practicing intradermal, subcutaneous and intramuscular tissue injection techniques.

The Injection Trainer has multiple tissue layers representing the epidermis, dermis, fat and muscle layer, and can easily attach to an arm or thigh to help teach professional-to-patient communication.

### SKILLS GAINED

- Subcutaneous injection
- Intradermal and intramuscular injection
- Management of tissue
- Professional-to-patient communication

### OVERVIEW

- Epidermis layer peels back to quickly release subcuticular liquid

### REALISM

- Tissues are soft and warm to the touch

### VERSATILITY

- Strap for hybrid simulation

### CLEANING

- Durable replaceable epidermis

### SAFETY

- Latex free

### ANATOMY

- Epidermis,
- dermis,
- fat and muscle

### CONTAINS

- Skin Pad & Muscle Block for Injection Trainer
- Epidermis for Injection Trainer (x2)



- Strap-on base plate
- Soft tissue tray with liner

## Epidermis for Injection Trainer (x2)

**Price inquiry:** +48 605999769, [kontakt@openmedis.pl](mailto:kontakt@openmedis.pl)

Product code: SM03642



Replacement Epidermis for Injection Trainer (00310) Pack of 2

### OVERVIEW

- Epidermis layer peels back to quickly release subcuticular liquid

### SAFETY

- Latex free

### WORKS WITH

- Injection Trainer

## Cutdown Pad

**Price inquiry:** +48 605999769, [kontakt@openmedis.pl](mailto:kontakt@openmedis.pl)

Product code: SM03643



A multi-layered pad containing filled veins for practicing venous cutdown procedure.

### SKILLS GAINED

- Palpation to locate vein position
- Incising tissue layers
- Inserting a cannula
- Vein injection both distally and proximally
- Tying off veins

### OVERVIEW

- The pad can be connected to the Mock Blood Giving Set to simulate blood flow.
- Only use Mock Blood - Venous (250ml) Product Number 00223

### VERSATILITY

- The veins can be used by multiple trainees if tied off after each use

### SAFETY

- Latex free

### ANATOMY

- Layers simulate the epidermis and subdermal layers
- 3 straight veins (each 150mm long) filled with mock blood

### WORKS WITH

- Mock Blood - Venous (250ml)



## Skin Pad & Muscle Block for Injection Trainer

**Price inquiry:** +48 605999769, [kontakt@openmedis.pl](mailto:kontakt@openmedis.pl)

Product code: SM03641



Replacement Skin Pad & Muscle Block to be used with Limbs & Things Injection Trainer (00310)

### WORKS WITH

- Injection Trainer

## Arterial Puncture Arm

**Price inquiry:** +48 605999769, [kontakt@openmedis.pl](mailto:kontakt@openmedis.pl)

Product code: SM01315



This easy to use training aid is ideal for practice in and demonstration of drawing arterial blood samples and for monitoring blood gases. Puncture locations can be identified through palpation of the pulse of radial and brachial artery. Realistic arterial pressure produces a lifelike backflow of blood in the syringe, confirming proper needle location in the artery. Delivered with 3 syringes and tubules, artificial arterial blood, 2 replacement arterial sections and carrying case.

Size: 71 x 13 x 33 cm, weight: 7.3 kg



## Human Vascular Access Sleeve Dark Skin

**Price inquiry:** +48 605999769, [kontakt@openmedis.pl](mailto:kontakt@openmedis.pl)

Product code: SM02957



Train on venipuncture and vascular access skills in life-like scenarios with no harm to participants with the **Human Vascular Access Sleeve**. Designed to fit most people and manikins, the sleeve is secured by the hook and loop tabs above and below SurgiReal's simulated RealFlow tissue pad.

Keeping safety as our top priority, all Vascular Access Sleeves are designed with puncture resistant material to make sure the needle won't make contact with your participant.

Training applications include, but are not limited to:

- Needle Alignment and Vascular Access,
- Palpating the Vessel,
- IV Placement.

### **BUILD YOUR SKILLS IN THREE STEPS:**

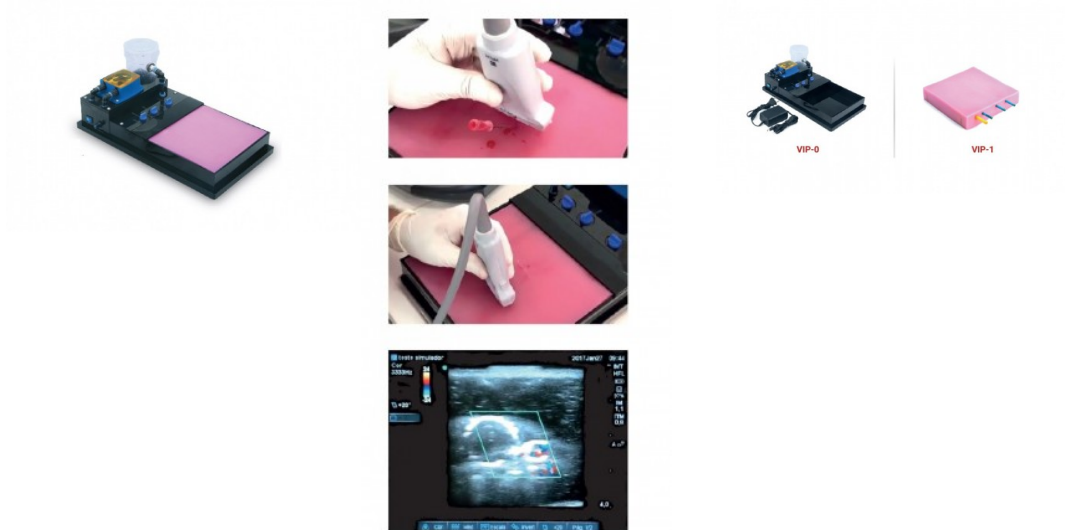
Sleeve attached to manikin,  
Sleeve attached to stationary person,  
Sleeve attached to a person mimicking real-life patient movement.

- 1 Sleeve,
- 1 Attachable Simulated Tissue Pad,
- 1 Package of Artificial Blood Powder,
- 1 IV Bag (1000 ml).

## SIMULATOR FOR ULTRASOUND-GUIDED VASCULAR INTERVENTIONS

**Price inquiry:** +48 605999769, [kontakt@openmedis.pl](mailto:kontakt@openmedis.pl)

Product code: SM03885



With the VIP (Vascular Injection Procedure) simulator for ultrasound guided vascular access procedures, it is possible to train hundreds of punctures with the insertion of guides and large-caliber catheters. The orifice closes after its removal, allowing further examination without persistent acoustic shadowing after 24 hours

The VIP allows the assessment of the arterial doppler, differentiating it from the venous vascular structure. The sensation of the depression of the vessel during puncture, the loss of resistance of the intraluminal needle, among other tactile perceptions, brings to the VIP characteristics similar only to those obtained in a real patient. The simulator consists of: **Surgical unit:** Made of Neoderma, it has superficial, medium and deep vascular structure. It is multifunctional, with 3 lines of mixed flow vessels (artery and vein) of approximately 20 cm with different calibers. The size of the vessels increases proportionally with depth. It allows several customization options such as atheroma plaques, shunts and more. **Base:** Composed by a structure in acrylic, a container for artificial blood, peristaltic pump with speed control, and pressostatic valve that interrupts the vascular flow under pressure, which provides an increase of the internal gauge in the vessel.

## Diabetic Injection model kit

**Price inquiry:** +48 605999769, [kontakt@openmedis.pl](mailto:kontakt@openmedis.pl)

Product code: SM01851



Made from realistic material, these teaching models facilitate technique practice on both an injection "skin" and a finger stick apparatus. The skin model may be strapped to the user's arm or leg to simulate a needle injection site, and the finger stick model may be held by the attached grip for lancet practice. Both can be punctured repeatedly. Replacement available. Comes with carrying case.

## Diabetic injection pad

**Price inquiry:** +48 605999769, [kontakt@openmedis.pl](mailto:kontakt@openmedis.pl)

Product code: SM01852



This pad that looks and feels like real human skin is ideal for diabetic instruction and injection practice. May be worn in specific body locations to allow patients to inject fluids into the pad to practice giving themselves injections. Pad is thick enough to accept all insulin needles. For safety purposes the oval pad has a hard plastic backing to prevent the needle from poking through.

## Pressurised cannulation pad

**Price inquiry:** +48 605999769, [kontakt@openmedis.pl](mailto:kontakt@openmedis.pl)

Product code: SM02978

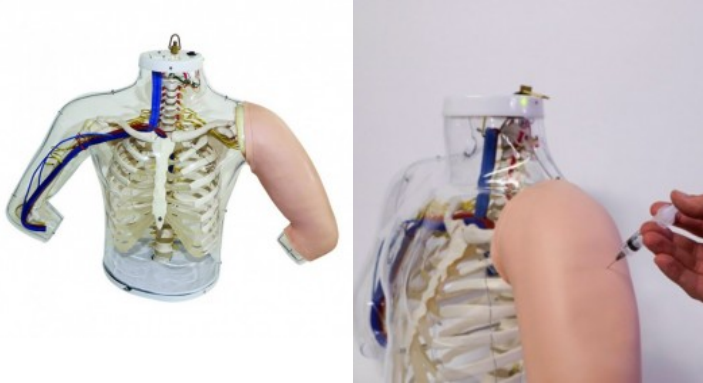


**The pressurised cannulation pad** has been introduced to provide a portable intravenous trainer and act as an alternative to using the traditional arm. These trainers are realistic and achieve relatively low running costs.

## Model of shoulder and arm anatomy / i.m. injection technique

**Price inquiry:** +48 605999769, [kontakt@openmedis.pl](mailto:kontakt@openmedis.pl)

Product code: SM01313



This model offers two functions in one model: on the right side it shows the anatomy of the upper arm and the shoulder including the bones and the muscles and nerves which are of importance for the injection. The student can transfer the anatomy visible on the right side to the left side and can then practice the technique of intramuscular injection there. The most important anatomical landmarks can be felt on the left side. The injection can be carried out with liquid. A green lamp lights up to confirm that the injection has been placed at the correct location. If it is placed at any other location, this is indicated by a red lamp and a buzzing sound.

Size: 50 x 75 x 30 cm