

## Phantom for intravenous injection with automatic blood flow

**Price inquiry:** +48 605999769, [kontakt@openmedis.pl](mailto:kontakt@openmedis.pl)

Product code: SM02009



A realistic arm phantom designed to learn intravenous injections with a motor that produces realistic blood flow. Veins and skin are one element. The insert consists of skin, epidermis, subcutaneous fat and veins. Thanks to the 3-layer tissue, the feelings during the injection are realistic. Possibility of injection into the elbow vein, radius vein and median vein. By placing veins and skin in one element, replacement is very easy. Blood flow is hybrid generated: thanks to the engine and gravity. The engine is easy to connect, it also makes it easy to flush the veins after finishing the exercises. Ability to work on battery or power supply.

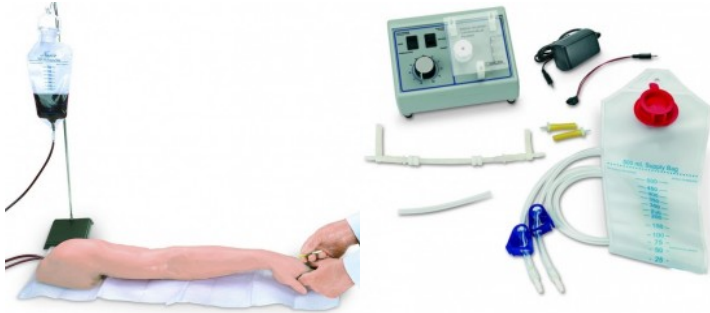
### Set contains:

- adult arm model,
- engine with pump,
- shoulder grip dedicated transport case,
- two inserts consisting of the epidermis,
- subcutaneous fat and veins,
- artificial blood concentrate (30 ml)

## Advanced arm for learning intravenous, intradermal and intramuscular injection with a pump

**Price inquiry:** +48 605999769, [kontakt@openmedis.pl](mailto:kontakt@openmedis.pl)

Product code: SM02420



Multifunctional, advanced phantom of the upper limb intended for learning intravenous, intradermal and intramuscular injections.

### Specyfification:

- Advanced 8-line venous system capable of injecting primary and secondary venous systems.
- All veins can be supplied with blood from one external reservoir.
- Different diameters of the veins
- Intramuscular injections into the deltoid muscle
- Realistic, soft leather made of leather-like materials
- Intradermal injections can be in the forearm and can be done with fluids.
- Correct injection causes a characteristic visual effect.
- Lifelike, soft, flexible fingers that act like natural
- Perceptible moment of puncture of the needle through the vein wall.
- Vein and skin that can be repeatedly punctured can be replaced.
- Hundreds of punctures possible before the skin is completely worn out.
- The included pump allows continuous, automatic, semi-closed circulation blood flow with the ability to vary the fluid / blood flow rate.
- Additionally, use of the pump reduces the time needed to set up and clean the trainer.
- The pump can be powered by batteries or by a power supply

### Set contains:

- upper limb model,
- syringe with needle, 3 ml
- syringe with needle, 12 ml
- 2 blood reservoirs
- cannula
- vice
- 2 small towels
- infusion needle
- soft carrying bag
- pump generating blood flow with accessories (adapters, power supply, battery power adapter)



## Paediatric Head Injection trainer

**Price inquiry:** +48 605999769, [kontakt@openmedis.pl](mailto:kontakt@openmedis.pl)

Product code: SM01316



An invaluable tool for demonstrating and practicing infusions and injections in the temporal and jugular veins of a newborn to a twelve-month-old infant. The neck is made of soft, flexible foam to provide a realistic feel of palpation and puncture.

The paediatric head includes the following:

- Head (to represent a six-month-old infant) with skin and veins
- Fluid supply bag
- 2 different gauge winged infusion needles
- Artificial blood

Supplied with hard carrying case.

## Venipuncture Arm Carry Case

**Price inquiry:** +48 605999769, [kontakt@openmedis.pl](mailto:kontakt@openmedis.pl)

Product code: SM03628



A padded carry case which keeps contents protected and upright, (reducing the risk of fluid spillage).

Includes additional storage space for venipuncture equipment.

This product is strongly recommended to all customers who regularly need to transport their skills training products.

### OVERVIEW

- Hard wearing
- Easy to transport
- Protects equipment

### WORKS WITH

- Advanced Venipuncture Arm (Light Skin Tone)
- Advanced Venipuncture Arm (Dark Skin Tone)
- Standard Venipuncture Arm (Light Skin Tone)
- Standard Venipuncture Arm (Dark Skin Tone)
- Basic Venipuncture Arm (Light Skin Tone)
- Basic Venipuncture Arm (Dark Skin Tone)

## Mock Blood - Arterial (250ml)

**Price inquiry:** +48 605999769, [kontakt@openmedis.pl](mailto:kontakt@openmedis.pl)

Product code: SM03637



250ml of synthetic solution made to the correct color and viscosity of arterial blood.

### REALISM

- Made with the correct color and viscosity of arterial blood

### CLEANING

- Washable

### WORKS WITH

- Mock Blood Giving Set
- Wide Common Bile Duct & Stones for Exploration
- Gall Bladder with Short Cystic Duct
- Vermiform Appendix - Normal Anatomy
- Vermiform Appendix - Post-ileal
- Vermiform Appendix - Retrocecal
- Gall Bladder with Normal Anatomy
- Gall Bladder with Bifurcated Cystic Artery

## I.v. Injection Hand

**Price inquiry:** +48 605999769, [kontakt@openmedis.pl](mailto:kontakt@openmedis.pl)

Product code: SM01454



The I.V. Injection Hand is the ideal simulator for advanced IV training! Now, for the first time, realism is available in an injectable hand simulator. The dorsal surface of the incredibly realistic hand includes injectable metacarpal, digital, and thumb veins. The soft, flexible fingers are molded separately with extreme attention to detail... right down to the fingerprints! Students have the opportunity to develop important manipulation skills provided by the flexion of the wrist. The skin rolls as you palpate the veins, and you'll feel the characteristic "pop" when the vein is entered. The simulated veins and skin are completely replaceable, allowing you to keep your Advanced IV Hand working and looking like new.

Under normal use, hundreds of injections may be performed before the veins or skin need to be replaced. Comes in storage box. Includes one pint simulated blood, 2 IV bags, butterfly set, 3 cc syringe, 12 cc syringe, and 22 gauge needle. Fluid supply stand not included. Five-year warranty.

This injection simulator is a great teaching and learning tool.

Supplied in storage box.

## Training arm intravenous injection with with a blood flow generating pump

**Price inquiry:** +48 605999769, [kontakt@openmedis.pl](mailto:kontakt@openmedis.pl)

Product code: SM02010



**This injection training model has the most injectable veins.**

The following veins can be punctured:

- Basilic V.
- Dorsal metacarpal V.
- Median basilic V.
- Cephalic V.
- Digital V.
- Median cephalic V.
- Accessory cephalic V.
- Thumb V.
- Median antebrachial V.
- Median cubital V.

Vein and skin can be replaced, the arm is moveable to enable the student to develop manipulation skills. I.m. and subcutaneous injection is also possible at this model. Supplied with storage case.

Comes with a blood-generating pump



## Training arm for intravenous injection

**Price inquiry:** +48 605999769, [kontakt@openmedis.pl](mailto:kontakt@openmedis.pl)

Product code: SM01460



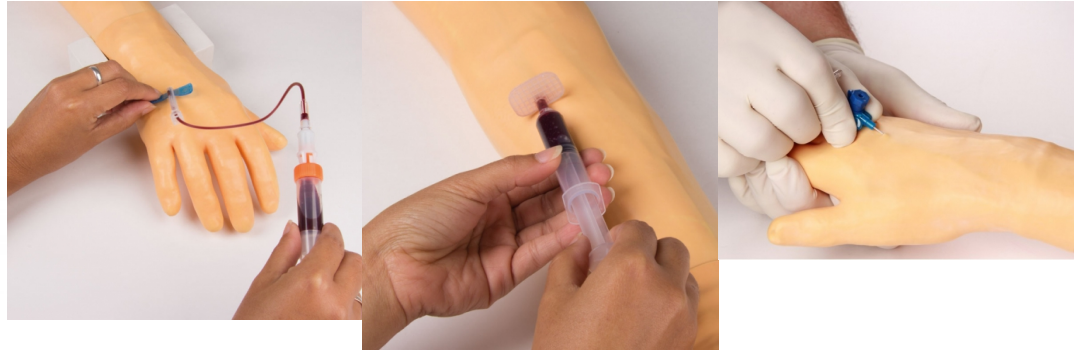
The injection model is intended to give the prospective physician and medical auxiliary staff the opportunity of practicing intravenous injection. The model consists of soft synthetic material with an exchangeable skin in addition to an exchangeable injection site on the elbow, in which the median elbow vein (median cubital vein) is represented by a tube. The vein is visible under the skin and can additionally be easily palpated. The tension of the skin and the characteristics of the occluded vein is imitated in an approximately true to life manner. The model is characterized particularly by the possibility of compressing the vein realistically and of simulating a roll vein via the application of lubricant. Tested in rigorous daily use in the German army. All individual components are available separately.



## Training arm for intravenous injection and infusion

**Price inquiry:** +48 605999769, [kontakt@openmedis.pl](mailto:kontakt@openmedis.pl)

Product code: SM01461



Specially developed for the Swiss army, this model offers the possibility of practicing blood sampling, injection and infusion. Two injection sites, one on the elbow and the other on the lower arm, allow palpation of the vein under the skin and realistic injection. Injection sites, vein and skin can be exchanged. Highly economically priced model, particularly suited to group training. All individual components are available separately.

## Hand skin for Injection arm

**Price inquiry:** +48 605999769, [kontakt@openmedis.pl](mailto:kontakt@openmedis.pl)

Product code: SM03985



**Hand** skin for Injection arm

Specially developed for the Swiss army, this model offers the possibility of practicing blood sampling, injection and infusion. Two injection sites, one on the elbow and the other on the lower arm, allow palpation of the vein under the skin and realistic injection. Injection sites, vein and skin can be exchanged. Highly economically priced model, particularly suited to group training. All individual components are available separately.

## Arm skin for Injection arm

**Price inquiry:** +48 605999769, [kontakt@openmedis.pl](mailto:kontakt@openmedis.pl)

Product code: SM03984



## Arm skin for Injection arm

Specially developed for the Swiss army, this model offers the possibility of practicing blood sampling, injection and infusion. Two injection sites, one on the elbow and the other on the lower arm, allow palpation of the vein under the skin and realistic injection. Injection sites, vein and skin can be exchanged. Highly economically priced model, particularly suited to group training. All individual components are available separately.

## ACF Vein Module

**Price inquiry:** +48 605999769, [kontakt@openmedis.pl](mailto:kontakt@openmedis.pl)

Product code: SM03619



Replacement ACF Vein Module for the Standard (70302 & 70303) and Advanced (70300 & 70301) Venipuncture Arms.

This product is not backwards compatible with the old Venipuncture Arm family. When purchased as a replacement part this product comes in a set of 2.

### OVERVIEW

- Veins can withstand up to 500 stabs from a 21g needle
- Cost-effective vein modules reduce waste and are easy to replace
- Realistic and palpable vein haptics promote accurate clinical use

### REALISM

- Realistic representation of the antecubital fossa (ACF) region

### CLEANING

- Veins are easy to replace, clean, service and maintain

### SAFETY

- This vein module contains latex

### WORKS WITH

- Standard Venipuncture Arm (Light Skin Tone)
- Standard Venipuncture Arm (Dark Skin Tone)
- Advanced Venipuncture Arm (Light Skin Tone)
- Advanced Venipuncture Arm (Dark Skin Tone)
- Metacarpal Vein Module
- Venipuncture Arm Skin - Light
- Venipuncture Arm Skin - Brown

## Metacarpal Vein Module

**Price inquiry:** +48 605999769, [kontakt@openmedis.pl](mailto:kontakt@openmedis.pl)

Product code: SM03621



Replacement ACF Vein Module for the Standard (70302 & 70303) and Advanced (70300 & 70301) Venipuncture Arms.

This product is not backwards compatible with the old Venipuncture Arm family. When purchased as a replacement part this product comes in a set of 2.

### OVERVIEW

- Veins can withstand up to 500 stabs from a 21g needle
- Cost-effective vein modules reduce waste and are easy to replace
- Realistic and palpable vein haptics promote accurate clinical use

### REALISM

- Realistic representation of the antecubital fossa (ACF) region

### CLEANING

- Veins are easy to replace, clean, service and maintain

### SAFETY

- This vein module contains latex

### WORKS WITH

- Standard Venipuncture Arm (Light Skin Tone)
- Standard Venipuncture Arm (Dark Skin Tone)
- Advanced Venipuncture Arm (Light Skin Tone)

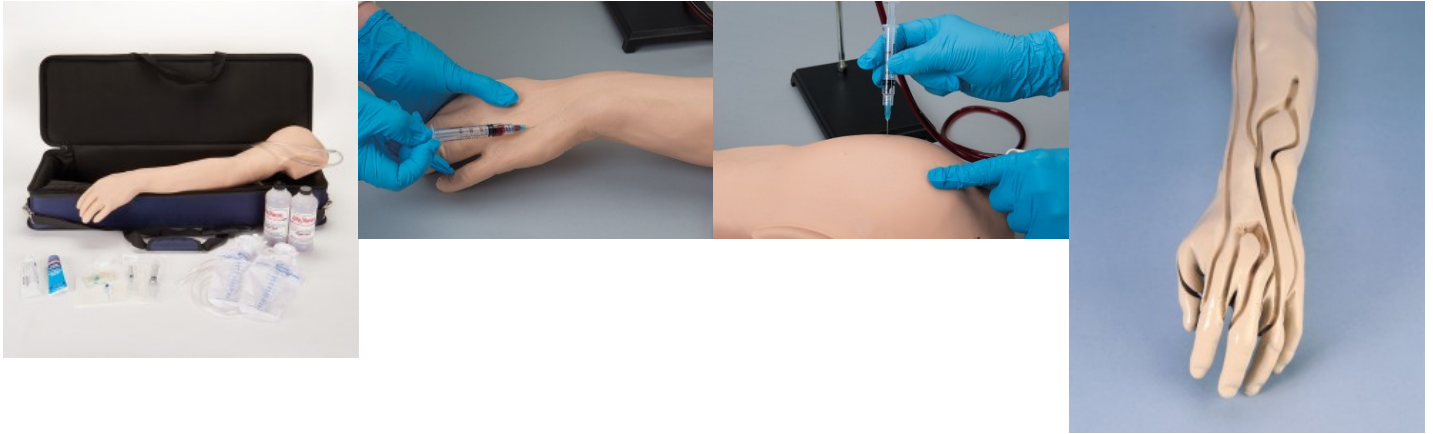


- Advanced Venipuncture Arm (Dark Skin Tone)

## Multi-venous IV & Injection arm, improved version

**Price inquiry:** +48 605999769, [kontakt@openmedis.pl](mailto:kontakt@openmedis.pl)

Product code: SM02419



This injection training model has the most injectable veins.

The following veins can be punctured:

- Basilic V.
- Dorsal metacarpal V.
- Median basilic V.
- Cephalic V.
- Digital V.
- Median cephalic V.
- Accessory cephalic V.
- Thumb V.
- Median antebrachial V.
- Median cubital V.

Now with new and improved vessel system, including non-visible/non-palpable veins, Rolling veins, disappearing and "difficult" veins. New improved skin for more realistic touch and feel. Changing the skin is much easier than before!

Vein and skin can be replaced, the arm is moveable to enable the student to develop manipulation skills. I.m. and subcutaneous injection is also possible at this model. Supplied with storage bag.



## Epidermis for ACF Pad

**Price inquiry:** +48 605999769, [kontakt@openmedis.pl](mailto:kontakt@openmedis.pl)

Product code: SM03635



1 Epidermis for the ACF Pad - Venepuncture (00140)

### SKILLS GAINED

- As part of the ACF Pad - Venepuncture training

### SAFETY

- This product is now latex free

### WORKS WITH

- ACF Pad - Venipuncture

## Child-Injection training arm

**Price inquiry:** +48 605999769, [kontakt@openmedis.pl](mailto:kontakt@openmedis.pl)

Product code: SM01463



This model provides realistic sensation and response. The lifelike vinyl skin actually rolls as you palpate to allow location of the vein. The synthetic rubber tubing for the veins was carefully selected to provide a lifelike simulation of vein size, and feeling of puncture and palpation for practicing venipuncture. A soft foam is used to simulate the deltoid muscle and allows the student to “get the feel” of administering intramuscular injections to children. Simulated bone in the shoulder defines and limits the injection area. Water may be used as an injection fluid in the shoulder area. Includes a Life/form® Arm with white skin, fluid supply bag, 3 cc syringe, one pint Life/form® blood, teaching guide, and hard carrying case.

- Practice venipuncture and intramuscular injection techniques and procedures used in young children
- Exact reproduction of the arm of a six-year-old child.

## Basic Venipuncture Arm

**Price inquiry:** +48 605999769, [kontakt@openmedis.pl](mailto:kontakt@openmedis.pl)

Product code: SM03616



An ideal trainer for early learning, the NEW Basic Venipuncture Arm uses a unique skin-locking system and simplistic vein structure to facilitate accurate venipuncture, IV cannulation, and IV infusion training on an anatomically correct male right arm.

The realistic arm skin and innovative vein gripping system simulate accurate training features, including blood flashback and the use of digital pressure to stem flow. Our skin locking mechanism (patent pending) ensures the model is easy to re-skin whilst maintaining the lifelike haptics of the underlying and fully palpable basilic, cephalic and dorsal metacarpal veins.

What features can you find on the new Basic Venipuncture Arm models?

Through feedback and research, Limbs & Things have improved key features across the venipuncture training range.

The new models are designed with increased realism. With the inclusion of a vein gripping system and more durable arm skin, vein haptics offer an increased life-like response in training simulations.

Extended tubing between the arm and blood system allows for easier set-up in training scenarios with simulated patients

An updated, robust, Gravity System Blood Supply reduces the risk of tipping during demonstrations, and allows for efficient learning in a classroom environment.

### SKILLS GAINED

- Intravenous Cannulation in dorsal metacarpal and ACF sites
- IV infusion
- Venipuncture
- Practice of aseptic techniques
- Communications skills when using a simulated patient

### OVERVIEW

- New and improved skin-locking system (patent pending) improves arm re-skinning after replacing a vein module
- New vein gripping system allows for easy re-fitting and positioning of veins
- Veins are palpable with realistic haptics for accurate clinical use
- Infusion tube allows for intravenous fluids to be administered
- Improved, gravity blood system

### REALISM

- Arm provides a realistic blood flashback upon insertion of needle
- Improved arm skin offers a more realistic look and feel



- Vein module is palpable through the arm skin
- Realistic representation of the antecubital fossa (SCF) and metacarpal regions
- Gripping systems secures veins in a true-to-life position

#### VERSATILITY

- Arm is compatible with vacuum blood collection systems, needles & syringe, and IV cannulas
- Extended tubing allows for extra maneuverability in the classroom for use with a simulated patient

#### CLEANING

- Flush liquid from the vein and fluid system before storing your product
- Clean the skin surface with a damp soft cloth, using warm water and mild detergent
- Allow skin to thoroughly dry before storing

#### SAFETY

- Only use Concentrated Venous Blood supplied with the arms, or product numbers 00020 & 00021, other fluids may weaken or damage the venipuncture simulator
- Use water-based lubricant to fit arm skin over the venipuncture arm base
- Veins contain latex, however, these are covered by the silicone arm skin during procedures

#### ANATOMY

- Suitable for use with a simulated patient to test communication skills
- Dorsal metacarpal vein in the hand
- Antecubital Fossa (ACF) vein in the arm
- Vein Module anatomy
- Basilic vein
- Cephalic vein
- Dorsal metacarpal veins
- Median cubital vein

#### CONTAINS

- Venipuncture Arm Skin (Light Skin Tone)
- Venipuncture Arm Rest
- Concentrated Venous Blood - Starter Pack
- Venipuncture Arm Infusion Tube
- Basic Venipuncture Vein
- Gravity System Blood Supply

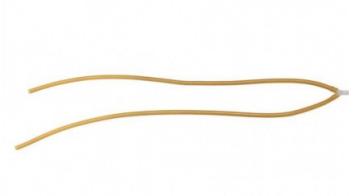
#### WORKS WITH

- Venipuncture Arm Skin (Light Skin Tone)
- Gravity System Blood Supply
- Basic Venipuncture Vein
- Venipuncture Arm Rest
- Concentrated Venous Blood - Starter Pack
- Venipuncture Arm Infusion Tube

## Basic Venipuncture Vein

**Price inquiry:** +48 605999769, [kontakt@openmedis.pl](mailto:kontakt@openmedis.pl)

Product code: SM03622



Replacement vein system for the Basic Venipuncture Arm (70304 & 70305). This product is not backwards compatible with the old Venipuncture Arm family

### OVERVIEW

- Veins can withstand up to 500 stabs from a 21g needle
- Realistic and palpable vein haptics promote accurate clinical use

### CLEANING

- Veins are easy to replace and are easy to clean, service, and maintain

### SAFETY

- Contains latex

### ANATOMY

- Represents the:
  - Basilic vein
  - Cephalic vein
  - Dorsal metacarpal veins

### WORKS WITH

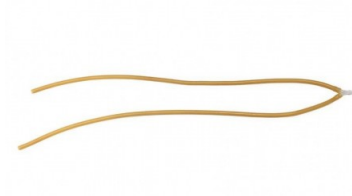
- Basic Venipuncture Arm (Light Skin Tone)
- Basic Venipuncture Arm (Dark Skin Tone)



## Basic Venipuncture Arm Vein - Latex Free

**Price inquiry:** +48 605999769, [kontakt@openmedis.pl](mailto:kontakt@openmedis.pl)

Product code: SM03623



Replacement vein system for the Basic Venipuncture Arm (70304 & 70305). This product is not backwards compatible with the old Venipuncture Arm family

### OVERVIEW

- Realistic and palpable vein haptics promote accurate clinical use

### CLEANING

- Veins are easy to replace and are easy to clean, service, and maintain

### SAFETY

- Latex free

### ANATOMY

- Represents the:
  - Basilic vein
  - Cephalic vein
  - Dorsal metacarpal veins

### WORKS WITH

- Basic Venipuncture Arm (Light Skin Tone)
- Basic Venipuncture Arm (Dark Skin Tone)

## ACF Pad - Venipuncture

**Price inquiry:** +48 605999769, [kontakt@openmedis.pl](mailto:kontakt@openmedis.pl)

Product code: SM03629



This soft tissue strap-on pad can be used to train in venipuncture and represents the antecubital fossa of the right arm.

### OVERVIEW

- Ideal for professional-to-patient communication and scenario based training using Simulated Patient
- Tough backing plate to prevent needlestick injuries
- Strap onto the antecubital fossa of the arm
- Veins are: self-sealing for repeated use, re-chargeable via a one-way valve, supplied with mock blood under pressure, and replaceable.

### VERSATILITY

- The pad can be connected to the Mock Blood Giving Set Product No. 60651

### CLEANING

- Replaceable epidermis is washable using soap and water when Limbs & Things mock blood is used

### SAFETY

- Contains latex
- Only use Mock Blood - Venous (250ml) Product No. 00223

### SKILLS GAINED

- Professional-to-patient communication
- Recognition of the vein pattern through palpation
- Insertion of a needle
- Insertion of cannula
- Management of blood flow

### CONTAINS

- Vein for ACF Pad
- Epidermis for ACF Pad
- Pad base with strap



#### WORKS WITH

- Mock Blood Giving Set
- Epidermis for ACF Pad
- Vein for ACF Pad



## Three Vein Pad - Venipuncture

**Price inquiry:** +48 605999769, [kontakt@openmedis.pl](mailto:kontakt@openmedis.pl)

Product code: SM03630



This soft tissue strap-on pad features 3 straight veins, one of which is pediatric size.

### OVERVIEW

- Veins are:
- Self-sealing for repeated use
- Replaceable
- Rechargeable via a one-way valve
- Supplied with mock blood under pressure

### VERSATILITY

- The pad can be connected to the Mock Blood Giving Set (Product No. 60651) to simulate blood flow. Only for use with Mock Blood - Venous (Product No. 00223)

### CLEANING

- Washable using soap and water
- Epidermis is replaceable

### SAFETY

- Tough backing plate to prevent needle stick injuries
- Veins contains latex

### ANATOMY

- Lumen sizes of veins (1 of each): 1mm, 4mm, 6mm

### SKILLS GAINED



- Professional-to-patient communication
- Insertion of a needle
- Insertion of cannula
- Management of blood flow

#### CONTAINS

- Epidermis for Three Vein Pad (Light Skin Tone)
- Vein for Three Vein Pad
- Pad base with strap

#### WORKS WITH

- Mock Blood Giving Set
- Vein for Three Vein Pad
- Epidermis for Three Vein Pad (Light Skin Tone)

## Mock Blood Giving Set

**Price inquiry:** +48 605999769, [kontakt@openmedis.pl](mailto:kontakt@openmedis.pl)

Product code: SM03639



A 1500 ml blood bag with luer-lock connector tube and stand, designed to provide a reservoir for Limbs & Things products requiring a mock blood supply.

### OVERVIEW

- Quick and easy to assemble
- Easy storage - collapsible stand
- Bag holds up to 1500ml
- Fluid flow shut-off clamp

### VERSATILITY

- This product can be used with Limbs & Things products requiring a mock blood supply including:
- Cutdown Pad
- ACF Pad & Extended ACF Pad
- Three Vein Pad
- Vermiform Appendix
- Gall Bladders

### CONTAINS

- Mock Blood/Fluid Bag
- Metal stand with base
- Luer lock tube adapter

### WORKS WITH

- ACF Pad - Venipuncture
- ACF Pad - Venipuncture (Dark Skin Tone)
- Three Vein Pad - Venipuncture
- Three Vein Pad - Venipuncture (Dark Skin Tone)
- Vermiform Appendix - Normal Anatomy
- Vermiform Appendix - Post-ileal
- Vermiform Appendix - Retrocecal
- Gall Bladder with Normal Anatomy
- Gall Bladder with Bifurcated Cystic Artery
- Gall Bladder with Short Cystic Duct
- Gall Bladder with Wide Common Bile Duct & Stones for Exploration





## Geriatric IV Training Arm

**Price inquiry:** +48 605999769, [kontakt@openmedis.pl](mailto:kontakt@openmedis.pl)

Product code: SM01467



Developed from a live cast, this arm is unique to the industry. Its properties include veins that roll away or disappear as you attempt to catheterize the vessel and a specially developed skin. Ideal for training anyone who works with the aged. Includes blood powder, IV bag, and carry bag.

## Extended ACF Pad - Venipuncture

**Price inquiry:** +48 605999769, [kontakt@openmedis.pl](mailto:kontakt@openmedis.pl)

Product code: SM03631



This soft tissue pad is supplied on a base for benchtop training in venipuncture and insertion of cannula. It represents the antecubital fossa of the right arm.

### SKILLS GAINED

- Recognition of the vein pattern through palpation
- Insertion of a needle
- Introduction of cannula and use of micropore
- Removal of cannula
- Management of blood flow

### SAFETY

- Contains latex

## Venipuncture Arm Skin

**Price inquiry:** +48 605999769, [kontakt@openmedis.pl](mailto:kontakt@openmedis.pl)

Product code: SM03624



Replacement hand and arm skin for the Light Venipuncture Arm Range. Works with the basic (70304), standard (70302), and advanced (70300) Venipuncture Arm models.

This product is not backwards compatible with the old Venipuncture Arm family.

### OVERVIEW

- Increased realism of the arm (look and feel)
- Durable skin

### CLEANING

- Skin surface washable using soap and water

### SAFETY

- This product is latex free

### WORKS WITH

- Basic Venipuncture Arm (Light Skin Tone)
- Standard Venipuncture Arm (Light Skin Tone)
- Advanced Venipuncture Arm (Light Skin Tone)
- Basic Venipuncture Arm (Dark Skin Tone)
- Standard Venipuncture Arm (Dark Skin Tone)
- Advanced Venipuncture Arm (Dark Skin Tone)

## Venipuncture Arm Skin

**Price inquiry:** +48 605999769, [kontakt@openmedis.pl](mailto:kontakt@openmedis.pl)

Product code: SM03626



Replacement Arm Skin for Standard and Advanced Venipuncture Arms

### OVERVIEW

- Skin is durable
- Soft and flexible

### CLEANING

- Skins are easy to clean and replace

### SAFETY

- Latex Free



## Concentrated Venous Blood - Refill

**Price inquiry:** +48 605999769, [kontakt@openmedis.pl](mailto:kontakt@openmedis.pl)

Product code: SM03625



The Concentrated Venous Blood has been formulated to greatly improve the leak resistance of veins.

### REALISM

- Solution dilutes to the correct colour and viscosity of venous blood

### VERSATILITY

- This concentrate can be diluted further for use in other vacuum collection systems
- Reuse your existing Venous Blood Starter Pack jug to dilute the refill bottle

### WORKS WITH

- Surgical Female Pelvic Trainer (SFPT) Mk 2
- Birthing Simulator PROMPT Flex - Standard (Light Skin Tone)
- Postpartum Hemorrhage Module - PROMPT Flex
- Compression Suture Uterus Module - PROMPT Flex
- Postpartum Hemorrhage Kit - PROMPT Flex



## Standard Venipuncture Arm

**Price inquiry:** +48 605999769, [kontakt@openmedis.pl](mailto:kontakt@openmedis.pl)

Product code: SM03617



The new and improved Standard Venipuncture Arm is an ideal trainer for basic and advanced learning. Incorporating a unique skin-locking system (patent pending) and modular vein systems to accurately simulate venipuncture, IV cannulation, and IV infusion training.

What are the benefits of these new model Venipuncture arms?

**Unique Skin Locking System** - ensures the model is easy to re-skin whilst maintaining the lifelike palpability and haptics of the underlying basilic, cephalic, dorsal metacarpal and median cubital veins.

**Vein Gripping** - new innovative vein gripping mechanism works in conjunction with the new arm skin to further enhance realistic and repeatable training.

**Modular Metacarpal & ACF Veins** - splitting the basic vein structure into two separate modules allows for better cost efficiency, ease of use, and replacing sections individually will reduce waste.

**Gravity System Blood Supply** - improvements to stability of the mock blood flow simulator, and extended tubing, allow for greater versatility during simulated patient training exercises.

### SKILLS GAINED

- Intravenous Cannulation in dorsal metacarpal and ACF sites
- IV infusion
- Venipuncture
- Practice of aseptic techniques
- Communications skills when using a simulated patient

### OVERVIEW

- New and improved skin-locking system (patent pending) improves arm re-skinning after replacing a vein module
- New vein gripping system allows for easy re-fitting and positioning of veins
- Veins are palpable with realistic haptics for accurate clinical use
- Infusion tube allows for intravenous fluids to be administered



- Improved, gravity blood system

#### REALISM

- Arm provides a realistic blood flashback upon insertion of needle
- Improved arm skin offers a more realistic look and feel
- Vein module is palpable through the arm skin
- Realistic representation of the antecubital fossa (SCF) and metacarpal regions
- Gripping systems secures veins in a true-to-life position

#### VERSATILITY

- Arm is compatible with vacuum blood collection systems, needles & syringe, and IV cannulas
- Extended tubing allows for extra maneuverability in the classroom for use with a simulated patient

#### CLEANING

- Flush liquid from the vein and fluid system before storing your product
- Clean the skin surface with a damp soft cloth, using warm water and mild detergent
- Allow skin to thoroughly dry before storing

#### SAFETY

- Only use Concentrated Venous Blood supplied with the arms, or product numbers 00020 & 00021, other fluids may weaken or damage the venipuncture simulator
- Use water-based lubricant to fit arm skin over the venipuncture arm base
- Veins contain latex, however, these are covered by the silicone arm skin during procedures

#### ANATOMY

- Sites for peripheral venous cannulation
- Dorsal metacarpal vein in the hand
- Antecubital Fossa (ACF) vein in the arm
- Metacarpal Vein Module anatomy?
- Basilic vein?
- Cephalic vein?



- Dorsal metacarpal veins?
- ACF Vein Module anatomy?
- Basilic vein?
- Cephalic vein?
- Median cubital vein?

#### CONTAINS

- Venipuncture Arm Skin (Light Skin Tone)
- Venipuncture Arm Rest
- Concentrated Venous Blood - Starter Pack
- Venipuncture Arm Infusion Tube
- ACF Vein Module
- Metacarpal Vein Module
- Gravity System Blood Supply

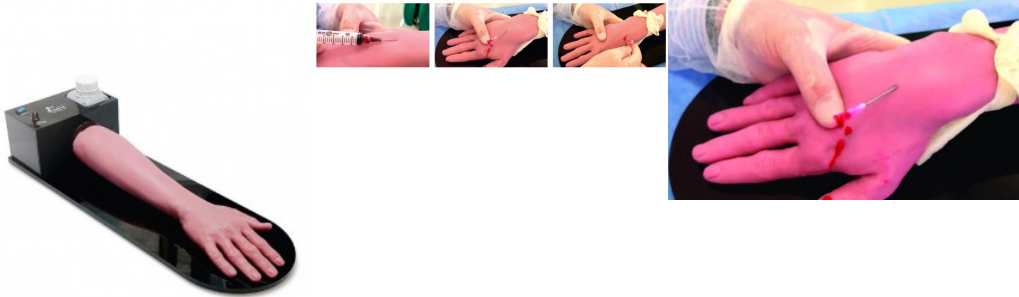
#### WORKS WITH

- Venipuncture Arm Skin (Light Skin Tone)
- Gravity System Blood Supply
- ACF Vein Module
- Metacarpal Vein Module

## Hand simulator with forearm for venous puncture training

**Price inquiry:** +48 605999769, [kontakt@openmedis.pl](mailto:kontakt@openmedis.pl)

Product code: SM03750



The most realistic venipuncture simulator of its kind in the world. Its design meets the needs of doctors, nurses and health professionals in teaching venipuncture procedures. Mounted on reusable acrylic support, the HOP is equipped with peristaltic pump, allowing speed control and vascular pulse. It has a container for artificial blood accommodation. Its vessels are anatomically integrated into the subcutaneous cell space, which deepens in its path allowing various complexity activities. If a sequential punctures schedule is obeyed, the HOP allows for hundreds of procedures without leaving marks of the needles. The surgical unit is molded into Neoderma. This model does not contain Silicone or Latex in its composition. With the HOP the learning curve will be reduced, allowing practical teaching with extreme reality. It has never been easier to simulate a venoclysis with such excellence and effectiveness. This product can be recycled after its exhaustive use.

Components and spare parts:

- Acrylic base
- Surgical unit

## Mock Blood/Fluid Bag

Price: 0 EUR (~~0 EUR~~) + shipping cost

Product code: SM03638



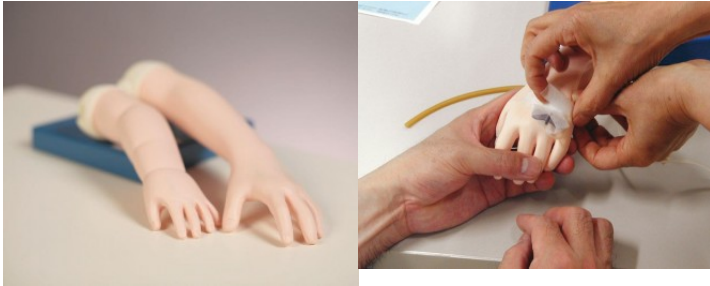
Mock blood/fluid bag, a replacement for the Mock Blood Giving Set (60651)

This bag can also be ordered as a replacement for the fluid bag supplied with our Urinary Catheterization Trainers. It is not suitable for use with our Bag & Stand Venipuncture Arm Mock Blood Supply.

## A 3-year-old child's arm simulator to learn injection

**Price inquiry:** +48 605999769, [kontakt@openmedis.pl](mailto:kontakt@openmedis.pl)

Product code: SM02815



**Product information: A 3-year-old child's arm simulator to learn injection** Realistic vein puncture training arm. The veins are palpable and the stinging sensation is very realistic. Models include the forearm cephalic vein, the middle forearm vein, and the cephalic vein. During puncture, the veins behave realistically, there is a back flow. The skin closes automatically when the needle is removed. The arms are consumables and must be replaced after frequent use.

## Baby IV arm

**Price inquiry:** +48 605999769, [kontakt@openmedis.pl](mailto:kontakt@openmedis.pl)

Product code: SM01959



This model has a special, extremely thin, synthetic skin, and rubber tubing with appropriately small lumen and thin walls. The cephalic and basilic vein are accessible, as well as the dorsal venous arch on the hand. Comes with two i.v. bags with clamps, artificial blood, and winged infusion set.

Size: 20.5 x 12.7 x 12.7 cm

## One-year-old child's arm to learn injection

**Price inquiry:** +48 605999769, [kontakt@openmedis.pl](mailto:kontakt@openmedis.pl)

Product code: SM02817



Realistic vein puncture training arm. The veins are palpable and the stinging sensation is very realistic. Models include the forearm cephalic vein, the middle forearm vein, and the cephalic vein. During puncture, the veins behave realistically, there is a back flow. The skin closes automatically when the needle is removed.

The arms are consumables and must be replaced after frequent use.



## Epidermis for Three Vein Pad

**Price inquiry:** +48 605999769, [kontakt@openmedis.pl](mailto:kontakt@openmedis.pl)

Product code: SM03636



Replacement Epidermis for Three Vein Pad Venepuncture

### SKILLS GAINED

- As part of the Three Vein Pad - Venepuncture

### SAFETY

- This product is now latex free

### WORKS WITH

- Three Vein Pad - Venipuncture

## Advanced Venipuncture Arm

**Price inquiry:** +48 605999769, [kontakt@openmedis.pl](mailto:kontakt@openmedis.pl)

Product code: SM03618



The Advanced Venipuncture Arm can be used to accurately simulate venipuncture, IV cannulation, and IV infusion.

Limbs & Things venipuncture arms accurately represent the key haptics of veins in a male right arm. Using palpation, trainees can determine the location of the veins to draw a blood sample or administer an intravenous injection.

The mock blood system offers a real-life training experience. Trainees will experience realistic blood pressure, blood flashback when entering the vein, and stemmed flow with digital pressure.

### IMPROVEMENTS FOR A BETTER TRAINING EXPERIENCE

This model retains popular features of the original venipuncture range, including, realistic blood flashback, vein haptics and soft flexible skin. To increase user experience within the classroom, enhancements have been made to improve its ease of use and durability.

**Vein Gripping System** - Simplifying the re-veining process, the underlying arm now includes recesses for the veins. This allows for an accurate and secure placement with little to no chance of movement when re-applying the arm skin.

**Modular Veins** - The veins have been split into two separate pieces, the Metacarpal Vein Module and the ACF Vein Module. Having the two vein modules rather than one, trainees are able to use each section until it needs replacing, reducing waste and making the product more cost effective.

**Veins of the basilic, cephalic, dorsal metacarpal and median cubital regions** are all present in the advanced model.

**Unique Skin Locking System** - New skin designs (for both light and dark skin tones) utilise a peg system which secures the edges of the loose skin close to the underlying arm. Carefully positioned on the underside of the arm, the pegs won't interfere with any training scenarios.

**Pressurized System** - The improved fluid system operates at a realistic blood pressure, this reduces blood leakage from the veins and prolongs the life of the individual modules.

### SKILLS GAINED

- Intravenous Cannulation in dorsal metacarpal and ACF sites
- IV infusion
- Venipuncture
- Practice of aseptic techniques
- Communications skills when using a simulated patient



## OVERVIEW

- Vein structures are now modular with a separate ACF vein and Metacarpal Vein, allowing for replacement of individual parts
- New and improved skin-locking system (patent pending) improves arm re-skinning after replacing a vein module
- New vein gripping system allows for easy re-fitting and positioning of veins
- Advanced Pump System reduces internal leakage for a more user-friendly experience
- Veins are palpable with realistic haptics for accurate clinical use
- Infusion tube allows for intravenous fluids to be administered
- Includes pressurized blood system

## REALISM

- Arm provides a realistic blood flashback upon insertion of needle
- Improved arm skin offers a more realistic look and feel
- Veins in the metacarpal & ACF modules are palpable
- Realistic representation of the antecubital fossa (SCF) and metacarpal regions
- With the Advanced Pump, the advanced venipuncture arm operates at an accurate blood pressure
- Gripping systems secures veins in a true-to-life position

## VERSATILITY

- Arm is compatible with vacuum blood collection systems, needles & syringe, and IV cannulas
- Extended tubing allows for extra maneuverability in the classroom for use with a simulated patient

## CLEANING

- Flush liquid from the vein and fluid system before storing your product
- Clean the skin surface with a damp soft cloth, using warm water and mild detergent
- Allow skin to thoroughly dry before storing

## SAFETY

- Only use Concentrated Venous Blood supplied with the arms, or product numbers 00020 & 00021, other fluids may weaken or damage the venipuncture simulator
- Use water-based lubricant to fit arm skin over the venipuncture arm base
- Veins contain latex, however, these are covered by the silicone arm skin during procedures

## ANATOMY

- Sites for peripheral venous cannulation



- Dorsal metacarpal vein in the hand
- Antecubital Fossa (ACF) vein in the arm
- Metacarpal Vein Module anatomy?
- Basilic vein?
- Cephalic vein?
- Dorsal metacarpal veins?
- ACF Vein Module anatomy?
- Basilic vein?
- Cephalic vein?
- Median cubital vein?

#### CONTAINS

- Venipuncture Arm Skin (Light Skin Tone)
- Venipuncture Arm Rest
- Concentrated Venous Blood - Starter Pack
- Venipuncture Arm Infusion Tube
- Product Image
- ACF Vein Module
- Metacarpal Vein Module
- Pressurized Venipuncture Arm Mock Blood Supply
- Refill Bottle

#### WORKS WITH

- Venipuncture Arm Skin (Light Skin Tone)
- Pressurized Venipuncture Arm Mock Blood Supply
- ACF Vein Module
- Metacarpal Vein Module
- Venipuncture Arm Rest
- Refill Bottle
- Concentrated Venous Blood - Starter Pack
- Venipuncture Arm Infusion Tube



## Advanced Venipuncture Arm Vein

**Price inquiry:** +48 605999769, [kontakt@openmedis.pl](mailto:kontakt@openmedis.pl)

Product code: SM03627



Replacement vein to be used with Limbs & Things Advanced Venipuncture Arms range and Bag & Stand Advanced Venipuncture Arm range.

### SAFETY

- Contains latex



## Advanced Four-Vein Venipuncture Training Aid

**Price inquiry:** +48 605999769, [kontakt@openmedis.pl](mailto:kontakt@openmedis.pl)

Product code: SM02418



The new and improved Advanced Venipuncture Training Aid features four barely discernible blue veins in three different sizes.

Hinged top and base eliminate the need to pass components through the top.

- Leak resistant – Now featuring a single length of tubing, no connections needed
- No Velcro needed – Bubble trap and stopcock removal and replacement are confirmed by an audible “click”
- No Velcro needed – The hinged top has an integral molded hook for placement of blood bag

## Vein for ACF Pad

**Price inquiry:** +48 605999769, [kontakt@openmedis.pl](mailto:kontakt@openmedis.pl)

Product code: SM03632



Vein for use with the ACF Pad - Venipuncture

### SKILLS GAINED

- As part of the ACF Pad - Venepuncture training

### SAFETY

- This product is now latex free

### WORKS WITH

- ACF Pad - Venipuncture

## Vein for Three Vein Pad

**Price inquiry:** +48 605999769, [kontakt@openmedis.pl](mailto:kontakt@openmedis.pl)

Product code: SM03633



Replacement vein for Three Vein Pad - Venipuncture

### SKILLS GAINED

- As part of the Three Vein Pad - Venepuncture

### SAFETY

- This product is now latex free

### WORKS WITH

- Three Vein Pad - Venipuncture