

## Phantom for intravenous injection with automatic blood flow

**Price inquiry:** +48 605999769, [kontakt@openmedis.pl](mailto:kontakt@openmedis.pl)

Product code: SM02009



A realistic arm phantom designed to learn intravenous injections with a motor that produces realistic blood flow. Veins and skin are one element. The insert consists of skin, epidermis, subcutaneous fat and veins. Thanks to the 3-layer tissue, the feelings during the injection are realistic. Possibility of injection into the elbow vein, radius vein and median vein. By placing veins and skin in one element, replacement is very easy. Blood flow is hybrid generated: thanks to the engine and gravity. The engine is easy to connect, it also makes it easy to flush the veins after finishing the exercises. Ability to work on battery or power supply.

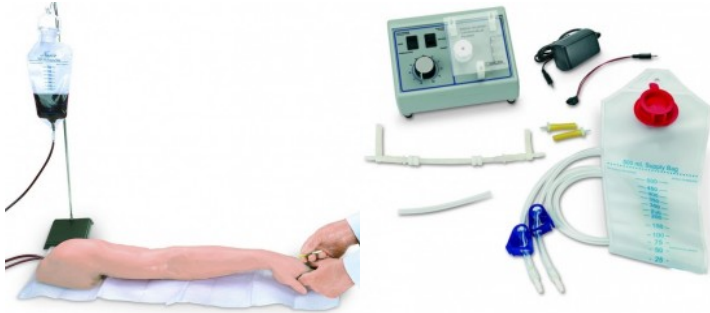
### Set contains:

- adult arm model,
- engine with pump,
- shoulder grip dedicated transport case,
- two inserts consisting of the epidermis,
- subcutaneous fat and veins,
- artificial blood concentrate (30 ml)

## Advanced arm for learning intravenous, intradermal and intramuscular injection with a pump

**Price inquiry:** +48 605999769, [kontakt@openmedis.pl](mailto:kontakt@openmedis.pl)

Product code: SM02420



Multifunctional, advanced phantom of the upper limb intended for learning intravenous, intradermal and intramuscular injections.

### Specyfification:

- Advanced 8-line venous system capable of injecting primary and secondary venous systems.
- All veins can be supplied with blood from one external reservoir.
- Different diameters of the veins
- Intramuscular injections into the deltoid muscle
- Realistic, soft leather made of leather-like materials
- Intradermal injections can be in the forearm and can be done with fluids.
- Correct injection causes a characteristic visual effect.
- Lifelike, soft, flexible fingers that act like natural
- Perceptible moment of puncture of the needle through the vein wall.
- Vein and skin that can be repeatedly punctured can be replaced.
- Hundreds of punctures possible before the skin is completely worn out.
- The included pump allows continuous, automatic, semi-closed circulation blood flow with the ability to vary the fluid / blood flow rate.
- Additionally, use of the pump reduces the time needed to set up and clean the trainer.
- The pump can be powered by batteries or by a power supply

### Set contains:

- upper limb model,
- syringe with needle, 3 ml
- syringe with needle, 12 ml
- 2 blood reservoirs
- cannula
- vice
- 2 small towels
- infusion needle
- soft carrying bag
- pump generating blood flow with accessories (adapters, power supply, battery power adapter)



## Shoulder Injection Trainer - Palpation Guided (without tablet)

**Price inquiry:** +48 605999769, [kontakt@openmedis.pl](mailto:kontakt@openmedis.pl)

Product code: SM03681



The Limbs & Things Palpation Guided Shoulder Injection Trainer range was designed in collaboration with clinicians to provide the highest standard for training. Palpation Guided injections are still widely performed by medical professionals across disciplines. True to life, repeatable training helps develop reliable and accurate practices. The latest shoulder model is made with enhanced materials that have extended the life of the trainer threefold. This increased durability means lower ongoing running costs. Training can be given on the following injection sites on the shoulder:

- Acromioclavicular joint
- Glenohumeral joint
- Bicipital groove
- Subacromial space

### SKILLS GAINED

- Practice multiple approaches to specific sites
- Patient positioning and management
- Identification of anatomical landmarks using palpation guidance
- Rotation of the shoulder to locate head of the humerus
- 4 common injection sites:
- Acromioclavicular Joint
- Glenohumeral Joint
- Bicipital Groove
- Subacromial Space

### OVERVIEW

- Palpation of shoulder to find the four most common injection points
- Compatible with selected Android devices, check with customer services to find out if this model is compatible with your existing device

### REALISM

- Discrete muscle and skin layers for realistic needle feel

### VERSATILITY

- Injections from multiple approaches to allow for different preferences
- Shoulder Injection Trainer comes with two shoulder skins (one on the module, one spare), and cost effective replacement skins are available
- Shoulder skins have been vigorously tested for repeated use, ensuring a longer life span for the product
- Torso is compatible with both palpation guided and ultrasound guided Shoulder Injection modules

### CLEANING



- NOTE: Shoulder Trainer contains electronics, do not submerge product in water
- Remove batteries from unit before cleaning
- Clean product with a damp cloth
- Allow product to dry thoroughly before storing

#### SAFETY

- This product is latex free
- Package contains needles
- Use the needles provided with the simulator, or near new needles of 21 gauge
- This simulator contains electronics, do not inject shoulder with liquids or use near water
- If storing for long periods of time, remove the batteries from the product
- Model conforms with ISO IEC 17050-1:2010 and FCC/CFR 47: Part 15, Sub Part B

#### ANATOMY

Internal anatomy:

- Clavicle
- Acromion
- Coracoid process
- Humerus
- Injection sites on the shoulder:
- Acromioclavicular joint
- Glenohumeral joint
- Bicipital groove
- Subacromial space

#### CONTAINS

- Shoulder Module - Palpation Guided (Light Skin Tone)
- Shoulder Torso
- Shoulder Skin
- Needle Set (3 Green, 21 Gauge)

#### WORKS WITH

- Shoulder Skin

## Knee Aspiration & Injection Trainer with Ultrasound Capabilities

**Price inquiry:** +48 605999769, [kontakt@openmedis.pl](mailto:kontakt@openmedis.pl)

Product code: SM03680



An anatomically accurate adult knee model for injection and aspiration of synovial fluid from the knee joint, from both the lateral and medial aspects, using palpation or ultrasound guidance. The robust sealed knee includes: knee joint, patella, patellar tendon and the suprapatellar space. Discrete muscle, skin and fat layers, provide realistic tissue and needle response, while key anatomical landmarks are realistic to palpate. This enables trainees to improve their accuracy of injection and aspiration through repeatable practise. Performing knee aspirations and injections are fundamental skills required for Internal Medical Trainees, as well as Rheumatologists, Doctors practising General Medicine and Orthopaedic Surgeons\* **SKILLS GAINED**

- Injection into joint cavity
- Aspiration of synovial fluid from both the lateral and medial aspects
- Competence using ultrasound technology to perform
- systematic scanning techniques and examination of the knee joint
- Identification of anatomical landmarks using ultrasound guidance or the palpation method
- Patient positioning and management
- Recognition of joint effusion
- Ballottement

### OVERVIEW

- 1,000+ stabs per module with 21 gauge needle
- Precise, palpable anatomy with bony landmarks
- Robust, sealed knee unit that holds all anatomy
- Key internal landmarks visible under ultrasound
- Compatible with all standard ultrasound machines
- Echolucent material allows aspiration and injection under ultrasound guidance or using the palpation method
- Suitable for Undergraduate and Postgraduate medical study
- Knee skin is watertight

### REALISM

- Discrete muscle and skin layers provide realistic tissue and needle response
- Anatomically accurate synovial sac and palpable patella
- Realistic color and consistency of synovial fluid

### VERSATILITY

- Can be used with leg supports for supine position, or without leg supports for side of bed position
- Caters for ultrasound-guided techniques as well as palpation
- Separate Fluid Bag & Stand ensure the model is easy to use and mobile
- Clear indicator on Fluid Bag to prevent overfilling
- Compatible with the "No-Trace" Marker to allow markup of the knee skin

### CLEANING



- Clean off any residual ultrasound gel from the knee injection trainer
- Skin surface should be cleaned with a soft, damp cloth, using warm water and mild detergent
- Empty any remaining fluid from the knee once the procedure is complete
- Allow knee injection model to dry before storing

#### SAFETY

- This product is latex free
- If the model sustains damage, refer all servicing to qualified servicing personnel
- During practice injections, be sure to remove the needle at the same angle as inserted, removing at an angle can cause the knee skin to split
- We advise that you do not use simulator if the skin of the knee is torn
- Always store/dispose of needles safely in the sharps bin supplied or a suitable alternative
- While the new Synovial Fluid in this product contains a new preservative (approved for use by EU cosmetic regulations) meaning it is safe for extended skin contact, we still recommend the use of gloves while using this product

ANATOMY Key anatomical landmarks are realistic to palpate:

- Skin
- Subcutaneous fat, quadriceps tendon & patellar ligament
- Prefemoral fat pad
- Suprapatellar fat pad
- Hoffa's or Infrapatellar fat pad
- Femur
- Medial & lateral collateral ligament
- Tibia
- Patella
- Joint space & synovial recess
- Meniscus
- Muscle mass of quadriceps

#### CONTAINS

- Fluid Bag and Stand
- Synovial Fluid (including syringe)
- Needle Set (3 Green, 21 Gauge)
- Ultrasound Knee Module for Aspiration & Injection

#### WORKS WITH

- Ultrasound Knee Module for Aspiration & Injection
- Synovial Fluid (including syringe)
- Synovial Fluid (250 ml)
- Fluid Bag and Stand
- Needle Set (3 Green, 21 Gauge)

## Lumbar Puncture Model

**Price inquiry:** +48 605999769, [kontakt@openmedis.pl](mailto:kontakt@openmedis.pl)

Product code: SM03655



The standard Lumbar Puncture trainer is designed for use in undergraduate and early postgraduate medical training.

In training sessions, medical students will get a true to life experience, including:

- A distinctive “pop” when puncturing the Dura (using the standard Dura) during a lumbar puncture procedure
- Measurable cerebrospinal fluid (CSF) pressure, model can present realistic pressure between 5 to 25 cmH<sub>2</sub>O
- Realistic flow of fluid from the water reservoir, increasing the volume of water will increase the flow rate allowing for quicker training
- Palpable bony landmarks for identification of target vertebrae
- To ensure that ongoing costs remain low, this trainer comes with two LP Tissue Inserts, making it a cost-effective way to train large numbers of students. The Bone Spine Insert can be swapped in seconds, making the tissue easily replaceable for continued use.

If you are looking to train in lumbar puncture and epidural procedures, take a look at our Advanced Epidural & Lumbar Puncture simulator **SKILLS GAINED**

- Identifying the iliac crests
- Administering of local anaesthetic injections
- Administering of therapeutic treatments, e.g. antibiotics or chemotherapy medication
- Performing diagnostic lumbar punctures
- Collection and measurement of cerebrospinal fluid
- Performing procedures in a sitting and left lateral position

### OVERVIEW

- Simulator gives a distinctive “pop” feeling when puncturing the dura during a lumbar puncture procedure
- Durable lumbar tissue insert and duras are longer lasting, increasing life span and keeping on going costs down

### REALISM

- Needle insertion possible between vertebrae
- Ability to feel when the dura is punctured during lumbar puncture
- Realistic rate of cerebrospinal fluid (CSF) can be simulated

### VERSATILITY

- All epidural and lumbar puncture inserts are compatible with the common base
- Skin and duras can be rotated to extend their life span and ensure cost effective training
- The stand provided allows for training in left lateral and sitting positions

### CLEANING





- Drain all fluid from the product when not in use
- Clean lumbar puncture trainer with a damp cloth, using warm water and mild detergent
- Allow trainer to completely dry before storing

#### SAFETY

- This product is latex free

#### ANATOMY

- Palpable sacrum
- Iliac crests
- Lumbar vertebrae between L2 and L5 with spinous processes
- Ligamentum flavum

#### CONTAINS

- Water Reservoir 2Ltr
- Lumbar Puncture Insert - Bone
- Lumbar Puncture Insert - Tissue (Pack of 2)
- Epidural & Lumbar Puncture Skin Pad (Light Skin Tone)
- Epidural & Lumbar Puncture Standard Dura (Pack of 2)
- Epidural & Lumbar Puncture Iliac Crest Insert
- Epidural & Lumbar Puncture Insert Cartridge
- Epidural & Lumbar Puncture Sacral Insert (Light Skin Tone)

## Ultrasound Epidural & Lumbar Puncture Model

**Price inquiry:** +48 605999769, [kontakt@openmedis.pl](mailto:kontakt@openmedis.pl)

Product code: SM03658



The Ultrasound Epidural & Lumbar Puncture trainer is designed to aid training in real-time ultrasound guided procedures. What are the latest features that support ultrasound guided injections and lumbar punctures?

- Spinous processes and Facet joints are visible under ultrasound
- Ultrasound inserts can be used to practice marking landmarks
- Multi-purpose stand allows for practice in both standing and left lateral positions

As both a Lumbar Puncture and Epidural trainer, this model can be used to teach:

- Loss of resistance technique
- Paramedian approach
- Threading an epidural catheter
- Administering fluids

### SKILLS GAINED

- Performing procedures in a sitting and left lateral position
- Identifying the iliac crests
- Identifying landmarks under ultrasound – spinous processes, interspinous space and facet joints
- Pre-puncture ultrasound mark up on the injection site
- Real time ultrasound guided injection
- Administering of local anaesthetic injections
- Administering of therapeutic treatments, e.g. antibiotics or chemotherapy medication
- Administration of an epidural
- Collection and measurement of cerebrospinal fluid

### OVERVIEW

- Simulator gives a distinctive “pop” feeling when puncturing the dura during a lumbar puncture procedure
- Durable lumbar tissue insert and duras are longer lasting, increasing life span and keeping on going costs down

### REALISM

- Needle insertion possible between vertebrae
- Ability to feel when the dura is punctured during lumbar puncture
- Realistic rate of cerebrospinal fluid (CSF) can be simulated

### VERSATILITY

- All epidural and lumbar puncture inserts are compatible with the common base
- Skin and duras can be rotated to extend their life span and ensure cost effective training
- The stand provided allows for training in left lateral and sitting positions

### CLEANING



- Drain all fluid from the product when not in use
- Clean lumbar puncture trainer with a damp cloth, using warm water and mild detergent
- Allow trainer to completely dry before storing

#### SAFETY

- This product is latex free
- Use gloves while using the Ultrasound Epidural and Lumbar Puncture trainer
- Wash hands thoroughly after handling the Ultrasound insert
- Please note: Fat Pads and Skin Pads are replacement parts for the palpation modules only, they are not compatible with ultrasound
- When marking up the ultrasound block, it is recommended to only use the supplied marker pen

#### ANATOMY

- Palpable sacrum
- Iliac crests
- Lumbar vertebrae between L2 and L5 with spinous processes

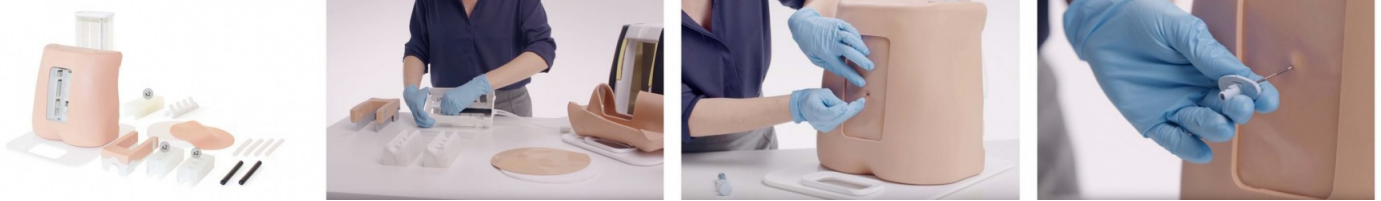
#### CONTAINS

- Water Reservoir 2Ltr
- Epidural & Lumbar Puncture Ultrasound Insert (Pack of 2, Light Skin Tone)
- Epidural & Lumbar Puncture Standard Dura (Pack of 2)
- Epidural & Lumbar Puncture Advanced Dura (Pack of 4)
- Epidural & Lumbar Puncture Iliac Crest Insert
- Epidural & Lumbar Puncture Insert Cartridge

## Advanced Epidural & Lumbar Puncture Model

**Price inquiry:** +48 605999769, [kontakt@openmedis.pl](mailto:kontakt@openmedis.pl)

Product code: SM03657



The Advanced Epidural & Lumbar Puncture trainer is suitable for use in Clinical Skills Centres, where both early postgraduate medical and anaesthesia specialisms are taught. Trainees are at a more advanced stage of training, and great realism and the ability to practice on a variety of patients is essential for continued learning. What are the latest features that support training in administering lumbar punctures? In training sessions, medical students will get a true to life experience, including: A distinctive “pop” when puncturing the Dura (using the standard Dura) during a lumbar puncture procedure or more subtle feedback when using the advanced Dura. Measurable cerebrospinal fluid (CSF) pressure, model can present realistic pressure between 5 to 25 cmH<sub>2</sub>O. Realistic flow of fluid from the water reservoir, increasing the volume of water will increase the flow rate allowing for quicker training. What are the latest features that support training in epidural procedures? Ligamentum flavum and interspinous ligaments allow for more realistic haptic feedback and practice of loss of resistance techniques during needle insertion. 6mm epidural space between the insert and the dura enable practice threading an epidural catheter and administering fluids. Softer silicone on either side of the spine offers greater realism and the paramedian approach is easier to perform. Four epidural inserts are supplied with this model, the advanced insert has a steeper angle with a reduced epidural space, allowing practice of more difficult injections. The advanced model comes with three fat pads that can be inserted behind the Skin Pad. Used individually or in combination, they can simulate patients with different amounts of body fat, allowing trainees to practice varying difficulties of injection. To ensure that ongoing costs remain low, this trainer comes with two LP Tissue Inserts, two standard Epidural and two advanced Epidural Inserts. This makes for a more cost-effective way to train large numbers of students. Inserts are easily interchangeable and offer a variety of training scenarios. If you are looking to train in ultrasound guided lumbar puncture and epidural procedures, take a look at our Ultrasound Epidural & Lumbar Puncture Model. **SKILLS GAINED**

- Identifying the iliac crests
- Administering of local anaesthetic injections
- Administering of therapeutic treatments, e.g. antibiotics or chemotherapy medication
- Performing diagnostic lumbar punctures
- Collection and measurement of cerebrospinal fluid
- Performing procedures in a sitting and left lateral position
- Administration of an epidural

### OVERVIEW

- Simulator gives a distinctive “pop” feeling when puncturing the dura during a lumbar puncture procedure
- Durable lumbar tissue insert and duras are longer lasting, increasing life span and keeping on going costs down

### REALISM

- Needle insertion possible between vertebrae
- Ability to feel when the dura is punctured during lumbar puncture
- Realistic rate of cerebrospinal fluid (CSF) can be simulated
- Fat pads can be inserted to vary the patient form

### VERSATILITY

- All epidural and lumbar puncture inserts are compatible with the common base



- Skin and duras can be rotated to extend their life span and ensure cost effective training
- The stand provided allows for training in left lateral and sitting positions

#### CLEANING

- Drain all fluid from the product when not in use
- Clean lumbar puncture trainer with a damp cloth, using warm water and mild detergent
- Allow trainer to completely dry before storing

#### SAFETY

- This product is latex free

#### ANATOMY

- Palpable sacrum
- Iliac crests
- Lumbar vertebrae between L2 and L5 with spinous processes
- Ligamentum flavum

#### CONTAINS

- Water Reservoir 2Ltr
- Lumbar Puncture Insert - Bone
- Lumbar Puncture Insert - Tissue (Pack of 2)
- Epidural Insert (Pack of 2)
- Advanced Epidural Insert (Pack of 2)
- Epidural & Lumbar Puncture Skin Pad (Light Skin Tone)
- Epidural & Lumbar Puncture Fat Pad (Pack of 3)
- Epidural & Lumbar Puncture Standard Dura (Pack of 2)
- Epidural & Lumbar Puncture Advanced Dura (Pack of 4)
- Epidural & Lumbar Puncture Iliac Crest Insert
- Epidural & Lumbar Puncture Insert Cartridge
- Epidural & Lumbar Puncture Sacral Insert (Light Skin Tone)

## Paediatric Head Injection trainer

**Price inquiry:** +48 605999769, [kontakt@openmedis.pl](mailto:kontakt@openmedis.pl)

Product code: SM01316



An invaluable tool for demonstrating and practicing infusions and injections in the temporal and jugular veins of a newborn to a twelve-month-old infant. The neck is made of soft, flexible foam to provide a realistic feel of palpation and puncture.

The paediatric head includes the following:

- Head (to represent a six-month-old infant) with skin and veins
- Fluid supply bag
- 2 different gauge winged infusion needles
- Artificial blood

Supplied with hard carrying case.



## **Training model for intradermal, subcutaneous and intramuscular injection**

**Price inquiry:** +48 605999769, [kontakt@openmedis.pl](mailto:kontakt@openmedis.pl)

Product code: SM02415



Simple and easy to use training model made of soft and realistic material for life like training of intradermal, subcutaneous and intramuscular injection. The material can be punctured repeatedly without showing needle holes. The injection of fluids is not recommended.

Size: 18 x 10 x 6 cm, Weight: 0.8 kg

## Venipuncture Arm Carry Case

**Price inquiry:** +48 605999769, [kontakt@openmedis.pl](mailto:kontakt@openmedis.pl)

Product code: SM03628



A padded carry case which keeps contents protected and upright, (reducing the risk of fluid spillage).

Includes additional storage space for venipuncture equipment.

This product is strongly recommended to all customers who regularly need to transport their skills training products.

### OVERVIEW

- Hard wearing
- Easy to transport
- Protects equipment

### WORKS WITH

- Advanced Venipuncture Arm (Light Skin Tone)
- Advanced Venipuncture Arm (Dark Skin Tone)
- Standard Venipuncture Arm (Light Skin Tone)
- Standard Venipuncture Arm (Dark Skin Tone)
- Basic Venipuncture Arm (Light Skin Tone)
- Basic Venipuncture Arm (Dark Skin Tone)



## Mock Blood - Arterial (250ml)

**Price inquiry:** +48 605999769, [kontakt@openmedis.pl](mailto:kontakt@openmedis.pl)

Product code: SM03637



250ml of synthetic solution made to the correct color and viscosity of arterial blood.

### REALISM

- Made with the correct color and viscosity of arterial blood

### CLEANING

- Washable

### WORKS WITH

- Mock Blood Giving Set
- Wide Common Bile Duct & Stones for Exploration
- Gall Bladder with Short Cystic Duct
- Vermiform Appendix - Normal Anatomy
- Vermiform Appendix - Post-ileal
- Vermiform Appendix - Retrocecal
- Gall Bladder with Normal Anatomy
- Gall Bladder with Bifurcated Cystic Artery

## Exercise model intradermal, subcutaneous and intramuscular injection

**Price inquiry:** +48 605999769, [kontakt@openmedis.pl](mailto:kontakt@openmedis.pl)

Product code: SM04021



Simple and practical training model with stand made of soft, realistic material for injection training, ideal for

- Subcutaneous injection
- Intradermal injection
- Intramuscular injection

Perfect for practising and internalizing injection procedures and hygiene protocols over and over again. The material can be punctured repeatedly without the puncture site being visible.

This high-quality task trainer is 100% made in Germany.

Size: 17.0 x 9.5 x 4 cm, weight: 0.4 kg

## Ultrasound Vascular Access Trainer

**Price inquiry:** +48 605999769, [kontakt@openmedis.pl](mailto:kontakt@openmedis.pl)

Product code: SM03644



An echolucent and contoured slab with representation of the jugular vein for teaching needle insertion under ultrasound.

### SKILLS GAINED

- Use of ultrasound technology
- Handling ultrasound transducers
- Insertion of needles under ultrasound guidance
- Handling and management of guidelines and catheters under ultrasound
- Recognition of vessels using ultrasound

### OVERVIEW

- Vein is self sealing for repeated use and rechargeable with water via a one-way valve
- Designed to be used on the bench top

### REALISM

- Echolucent material provides realistic ultrasound image

### VERSATILITY

- Fluid volume and pressure can be changed in the vessel to represent variability in patient circulation, providing various levels of difficulty for needle insertion

### CLEANING

- Skin washable with soap and water

### SAFETY

- Contains latex

### CONTAINS

- Ultrasound Vascular Access Slab
- Base unit
- 10 ml syringe

## Intramuscular injection model

**Price inquiry:** +48 605999769, [kontakt@openmedis.pl](mailto:kontakt@openmedis.pl)

Product code: SM01455



A simple to use and economically priced model for intramuscular injection training. Made of lifelike, soft material. It can be punctured repeatedly. Fluid use is not recommended.

## Injection Trainer

**Price inquiry:** +48 605999769, [kontakt@openmedis.pl](mailto:kontakt@openmedis.pl)

Product code: SM03640



Our soft tissue injection pad is designed for practicing intradermal, subcutaneous and intramuscular tissue injection techniques.

The Injection Trainer has multiple tissue layers representing the epidermis, dermis, fat and muscle layer, and can easily attach to an arm or thigh to help teach professional-to-patient communication.

### SKILLS GAINED

- Subcutaneous injection
- Intradermal and intramuscular injection
- Management of tissue
- Professional-to-patient communication

### OVERVIEW

- Epidermis layer peels back to quickly release subcuticular liquid

### REALISM

- Tissues are soft and warm to the touch

### VERSATILITY

- Strap for hybrid simulation

### CLEANING

- Durable replaceable epidermis

### SAFETY

- Latex free

### ANATOMY

- Epidermis,
- dermis,
- fat and muscle

### CONTAINS

- Skin Pad & Muscle Block for Injection Trainer
- Epidermis for Injection Trainer (x2)



- Strap-on base plate
- Soft tissue tray with liner

## I.v. Injection Hand

**Price inquiry:** +48 605999769, [kontakt@openmedis.pl](mailto:kontakt@openmedis.pl)

Product code: SM01454



The I.V. Injection Hand is the ideal simulator for advanced IV training! Now, for the first time, realism is available in an injectable hand simulator. The dorsal surface of the incredibly realistic hand includes injectable metacarpal, digital, and thumb veins. The soft, flexible fingers are molded separately with extreme attention to detail... right down to the fingerprints! Students have the opportunity to develop important manipulation skills provided by the flexion of the wrist. The skin rolls as you palpate the veins, and you'll feel the characteristic "pop" when the vein is entered. The simulated veins and skin are completely replaceable, allowing you to keep your Advanced IV Hand working and looking like new.

Under normal use, hundreds of injections may be performed before the veins or skin need to be replaced. Comes in storage box. Includes one pint simulated blood, 2 IV bags, butterfly set, 3 cc syringe, 12 cc syringe, and 22 gauge needle. Fluid supply stand not included. Five-year warranty.

This injection simulator is a great teaching and learning tool.

Supplied in storage box.

## Training arm intravenous injection

**Price inquiry:** +48 605999769, [kontakt@openmedis.pl](mailto:kontakt@openmedis.pl)

Product code: SM01311



This injection training model has the most injectable veins.

The following veins can be punctured:

- Basilic V.
- Dorsal metacarpal V.
- Median basilic V.
- Cephalic V.
- Digital V.
- Median cephalic V.
- Accessory cephalic V.
- Thumb V.
- Median antebrachial V.
- Median cubital V.

Vein and skin can be replaced, the arm is moveable to enable the student to develop manipulation skills. I.m. and subcutaneous injection is also possible at this model. Supplied with storage case.



## Training arm intravenous injection with with a blood flow generating pump

**Price inquiry:** +48 605999769, [kontakt@openmedis.pl](mailto:kontakt@openmedis.pl)

Product code: SM02010



**This injection training model has the most injectable veins.**

The following veins can be punctured:

- Basilic V.
- Dorsal metacarpal V.
- Median basilic V.
- Cephalic V.
- Digital V.
- Median cephalic V.
- Accessory cephalic V.
- Thumb V.
- Median antebrachial V.
- Median cubital V.

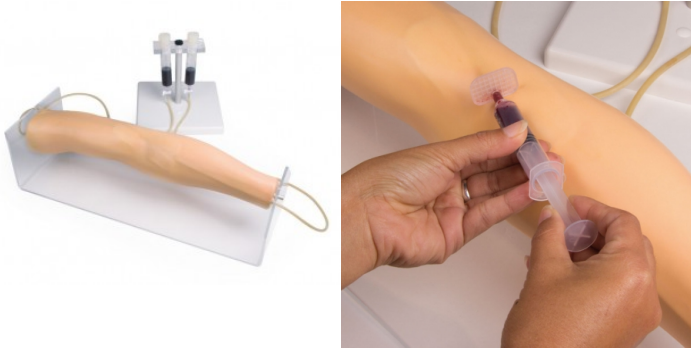
Vein and skin can be replaced, the arm is moveable to enable the student to develop manipulation skills. I.m. and subcutaneous injection is also possible at this model. Supplied with storage case.

Comes with a blood-generating pump

## Training arm for intravenous injection

**Price inquiry:** +48 605999769, [kontakt@openmedis.pl](mailto:kontakt@openmedis.pl)

Product code: SM01460



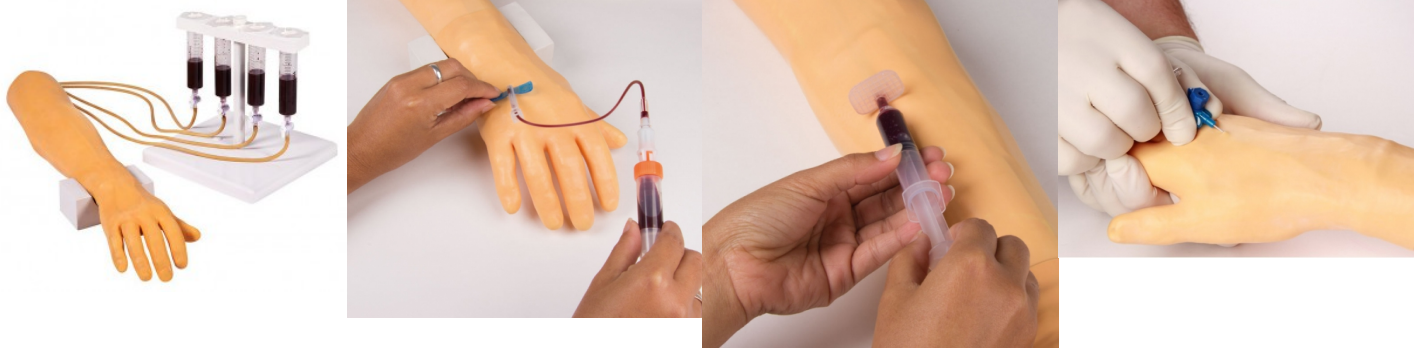
The injection model is intended to give the prospective physician and medical auxiliary staff the opportunity of practicing intravenous injection. The model consists of soft synthetic material with an exchangeable skin in addition to an exchangeable injection site on the elbow, in which the median elbow vein (median cubital vein) is represented by a tube. The vein is visible under the skin and can additionally be easily palpated. The tension of the skin and the characteristics of the occluded vein is imitated in an approximately true to life manner. The model is characterized particularly by the possibility of compressing the vein realistically and of simulating a roll vein via the application of lubricant. Tested in rigorous daily use in the German army. All individual components are available separately.



## Training arm for intravenous injection and infusion

**Price inquiry:** +48 605999769, [kontakt@openmedis.pl](mailto:kontakt@openmedis.pl)

Product code: SM01461



Specially developed for the Swiss army, this model offers the possibility of practicing blood sampling, injection and infusion. Two injection sites, one on the elbow and the other on the lower arm, allow palpation of the vein under the skin and realistic injection. Injection sites, vein and skin can be exchanged. Highly economically priced model, particularly suited to group training. All individual components are available separately.

## Hand skin for Injection arm

**Price inquiry:** +48 605999769, [kontakt@openmedis.pl](mailto:kontakt@openmedis.pl)

Product code: SM03985



**Hand** skin for Injection arm

Specially developed for the Swiss army, this model offers the possibility of practicing blood sampling, injection and infusion. Two injection sites, one on the elbow and the other on the lower arm, allow palpation of the vein under the skin and realistic injection. Injection sites, vein and skin can be exchanged. Highly economically priced model, particularly suited to group training. All individual components are available separately.

## Arm skin for Injection arm

**Price inquiry:** +48 605999769, [kontakt@openmedis.pl](mailto:kontakt@openmedis.pl)

Product code: SM03984



## Arm skin for Injection arm

Specially developed for the Swiss army, this model offers the possibility of practicing blood sampling, injection and infusion. Two injection sites, one on the elbow and the other on the lower arm, allow palpation of the vein under the skin and realistic injection. Injection sites, vein and skin can be exchanged. Highly economically priced model, particularly suited to group training. All individual components are available separately.

## ACF Vein Module

**Price inquiry:** +48 605999769, [kontakt@openmedis.pl](mailto:kontakt@openmedis.pl)

Product code: SM03619



Replacement ACF Vein Module for the Standard (70302 & 70303) and Advanced (70300 & 70301) Venipuncture Arms.

This product is not backwards compatible with the old Venipuncture Arm family. When purchased as a replacement part this product comes in a set of 2.

### OVERVIEW

- Veins can withstand up to 500 stabs from a 21g needle
- Cost-effective vein modules reduce waste and are easy to replace
- Realistic and palpable vein haptics promote accurate clinical use

### REALISM

- Realistic representation of the antecubital fossa (ACF) region

### CLEANING

- Veins are easy to replace, clean, service and maintain

### SAFETY

- This vein module contains latex

### WORKS WITH

- Standard Venipuncture Arm (Light Skin Tone)
- Standard Venipuncture Arm (Dark Skin Tone)
- Advanced Venipuncture Arm (Light Skin Tone)
- Advanced Venipuncture Arm (Dark Skin Tone)
- Metacarpal Vein Module
- Venipuncture Arm Skin - Light
- Venipuncture Arm Skin - Brown

## Metacarpal Vein Module

**Price inquiry:** +48 605999769, [kontakt@openmedis.pl](mailto:kontakt@openmedis.pl)

Product code: SM03621



Replacement ACF Vein Module for the Standard (70302 & 70303) and Advanced (70300 & 70301) Venipuncture Arms.

This product is not backwards compatible with the old Venipuncture Arm family. When purchased as a replacement part this product comes in a set of 2.

### OVERVIEW

- Veins can withstand up to 500 stabs from a 21g needle
- Cost-effective vein modules reduce waste and are easy to replace
- Realistic and palpable vein haptics promote accurate clinical use

### REALISM

- Realistic representation of the antecubital fossa (ACF) region

### CLEANING

- Veins are easy to replace, clean, service and maintain

### SAFETY

- This vein module contains latex

### WORKS WITH

- Standard Venipuncture Arm (Light Skin Tone)
- Standard Venipuncture Arm (Dark Skin Tone)
- Advanced Venipuncture Arm (Light Skin Tone)



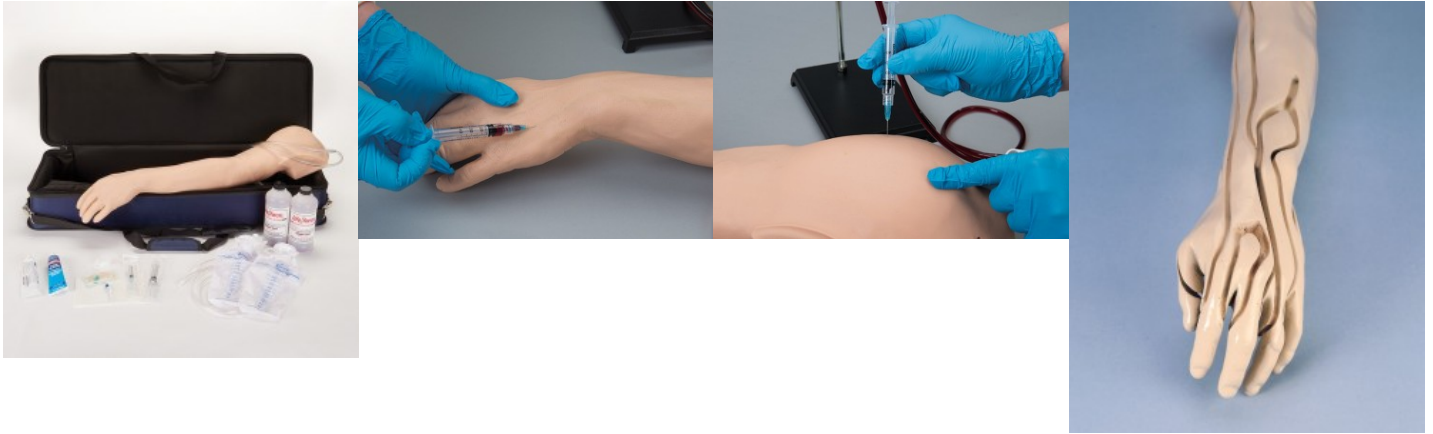
- Advanced Venipuncture Arm (Dark Skin Tone)



## Multi-venous IV & Injection arm, improved version

**Price inquiry:** +48 605999769, [kontakt@openmedis.pl](mailto:kontakt@openmedis.pl)

Product code: SM02419



This injection training model has the most injectable veins.

The following veins can be punctured:

- Basilic V.
- Dorsal metacarpal V.
- Median basilic V.
- Cephalic V.
- Digital V.
- Median cephalic V.
- Accessory cephalic V.
- Thumb V.
- Median antebrachial V.
- Median cubital V.

Now with new and improved vessel system, including non-visible/non-palpable veins, Rolling veins, disappearing and "difficult" veins. New improved skin for more realistic touch and feel. Changing the skin is much easier than before!

Vein and skin can be replaced, the arm is moveable to enable the student to develop manipulation skills. I.m. and subcutaneous injection is also possible at this model. Supplied with storage bag.

## Injection Belly

**Price inquiry:** +48 605999769, [kontakt@openmedis.pl](mailto:kontakt@openmedis.pl)

Product code: SM01465



This soft stomach replica will be an invaluable tool for teaching patients how to properly insert and rotate the infusion set for insulin pumps, avoiding the 5 cm area around the navel, as well as giving self-injections of many types including pen-style injections. The trainer has lifelike skin with what feels like real stomach tissue underneath. There is a soft plastic backing to keep needles from going through and holes to allow the material to breathe and dry, should you choose to inject liquids. Distilled water may be injected, but the more liquid that is injected into the simulator, the longer the time for evaporation. Actual insulin or other medications should not be used, as they may deteriorate the material. The injection belly is considered disposable; however, with proper care and treatment it will serve its purpose for a long period of time. Using the smallest needles possible when simulating injections and rotating the insertion points will help prolong the life of the trainer.

Size: 25.4 x 15.3 x 3.2 cm, Weight: 0.4 kg

## Epidermis for ACF Pad

**Price inquiry:** +48 605999769, [kontakt@openmedis.pl](mailto:kontakt@openmedis.pl)

Product code: SM03635



1 Epidermis for the ACF Pad - Venepuncture (00140)

### SKILLS GAINED

- As part of the ACF Pad - Venepuncture training

### SAFETY

- This product is now latex free

### WORKS WITH

- ACF Pad - Venipuncture

## Epidermis for Injection Trainer (x2)

**Price inquiry:** +48 605999769, [kontakt@openmedis.pl](mailto:kontakt@openmedis.pl)

Product code: SM03642



Replacement Epidermis for Injection Trainer (00310) Pack of 2

### OVERVIEW

- Epidermis layer peels back to quickly release subcuticular liquid

### SAFETY

- Latex free

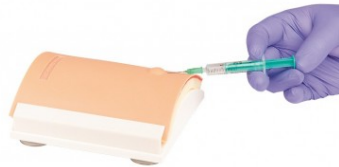
### WORKS WITH

- Injection Trainer

## Intradermal injection trainer

**Price inquiry:** +48 605999769, [kontakt@openmedis.pl](mailto:kontakt@openmedis.pl)

Product code: SM02414



This simulator consists of a flexible skin on an arched base. The realistic condition and optical appearance of the skin creates natural training opportunities. The simulator has six locations for training of intradermal injections. If fluid is injected correctly, a typical skin wheal is formed. This wheal can be removed by simply aspirating the fluid back in the syringe. Each injection location can be used several times by the students. If the puncture sites are worn out, the skin can easily be replaced and the base can be used again.

## Child-Injection training arm

**Price inquiry:** +48 605999769, [kontakt@openmedis.pl](mailto:kontakt@openmedis.pl)

Product code: SM01463



This model provides realistic sensation and response. The lifelike vinyl skin actually rolls as you palpate to allow location of the vein. The synthetic rubber tubing for the veins was carefully selected to provide a lifelike simulation of vein size, and feeling of puncture and palpation for practicing venipuncture. A soft foam is used to simulate the deltoid muscle and allows the student to “get the feel” of administering intramuscular injections to children. Simulated bone in the shoulder defines and limits the injection area. Water may be used as an injection fluid in the shoulder area. Includes a Life/form® Arm with white skin, fluid supply bag, 3 cc syringe, one pint Life/form® blood, teaching guide, and hard carrying case.

- Practice venipuncture and intramuscular injection techniques and procedures used in young children
- Exact reproduction of the arm of a six-year-old child.

## Cutdown Pad

**Price inquiry:** +48 605999769, [kontakt@openmedis.pl](mailto:kontakt@openmedis.pl)

Product code: SM03643



A multi-layered pad containing filled veins for practicing venous cutdown procedure.

### SKILLS GAINED

- Palpation to locate vein position
- Incising tissue layers
- Inserting a cannula
- Vein injection both distally and proximally
- Tying off veins

### OVERVIEW

- The pad can be connected to the Mock Blood Giving Set to simulate blood flow.
- Only use Mock Blood - Venous (250ml) Product Number 00223

### VERSATILITY

- The veins can be used by multiple trainees if tied off after each use

### SAFETY

- Latex free

### ANATOMY

- Layers simulate the epidermis and subdermal layers
- 3 straight veins (each 150mm long) filled with mock blood

### WORKS WITH

- Mock Blood - Venous (250ml)

## Intramuscular Injection Pad

**Price inquiry:** +48 605999769, [kontakt@openmedis.pl](mailto:kontakt@openmedis.pl)

Product code: SM04023



This injection pad can be used both as a table model and for strapping to the arm, leg or other parts of the body. It makes it possible to learn and train intramuscular and subcutaneous injections. The pad has 3 skin layers, epidermis, fat layer and muscle layer. It is possible to inject fluid, which can simply be squeezed out after the exercise. The pad can be easily strapped on and taken off again using the Velcro strap. Size 12x12x8cm, weight 0.4kg





## Skin Pad & Muscle Block for Injection Trainer

**Price inquiry:** +48 605999769, [kontakt@openmedis.pl](mailto:kontakt@openmedis.pl)

Product code: SM03641



Replacement Skin Pad & Muscle Block to be used with Limbs & Things Injection Trainer (00310)

### WORKS WITH

- Injection Trainer

## Basic Venipuncture Arm

**Price inquiry:** +48 605999769, [kontakt@openmedis.pl](mailto:kontakt@openmedis.pl)

Product code: SM03616



An ideal trainer for early learning, the NEW Basic Venipuncture Arm uses a unique skin-locking system and simplistic vein structure to facilitate accurate venipuncture, IV cannulation, and IV infusion training on an anatomically correct male right arm.

The realistic arm skin and innovative vein gripping system simulate accurate training features, including blood flashback and the use of digital pressure to stem flow. Our skin locking mechanism (patent pending) ensures the model is easy to re-skin whilst maintaining the lifelike haptics of the underlying and fully palpable basilic, cephalic and dorsal metacarpal veins.

What features can you find on the new Basic Venipuncture Arm models?

Through feedback and research, Limbs & Things have improved key features across the venipuncture training range.

The new models are designed with increased realism. With the inclusion of a vein gripping system and more durable arm skin, vein haptics offer an increased life-like response in training simulations.

Extended tubing between the arm and blood system allows for easier set-up in training scenarios with simulated patients

An updated, robust, Gravity System Blood Supply reduces the risk of tipping during demonstrations, and allows for efficient learning in a classroom environment.

### SKILLS GAINED

- Intravenous Cannulation in dorsal metacarpal and ACF sites
- IV infusion
- Venipuncture
- Practice of aseptic techniques
- Communications skills when using a simulated patient

### OVERVIEW

- New and improved skin-locking system (patent pending) improves arm re-skinning after replacing a vein module
- New vein gripping system allows for easy re-fitting and positioning of veins
- Veins are palpable with realistic haptics for accurate clinical use
- Infusion tube allows for intravenous fluids to be administered
- Improved, gravity blood system

### REALISM

- Arm provides a realistic blood flashback upon insertion of needle
- Improved arm skin offers a more realistic look and feel



- Vein module is palpable through the arm skin
- Realistic representation of the antecubital fossa (SCF) and metacarpal regions
- Gripping systems secures veins in a true-to-life position

#### VERSATILITY

- Arm is compatible with vacuum blood collection systems, needles & syringe, and IV cannulas
- Extended tubing allows for extra maneuverability in the classroom for use with a simulated patient

#### CLEANING

- Flush liquid from the vein and fluid system before storing your product
- Clean the skin surface with a damp soft cloth, using warm water and mild detergent
- Allow skin to thoroughly dry before storing

#### SAFETY

- Only use Concentrated Venous Blood supplied with the arms, or product numbers 00020 & 00021, other fluids may weaken or damage the venipuncture simulator
- Use water-based lubricant to fit arm skin over the venipuncture arm base
- Veins contain latex, however, these are covered by the silicone arm skin during procedures

#### ANATOMY

- Suitable for use with a simulated patient to test communication skills
- Dorsal metacarpal vein in the hand
- Antecubital Fossa (ACF) vein in the arm
- Vein Module anatomy
- Basilic vein
- Cephalic vein
- Dorsal metacarpal veins
- Median cubital vein

#### CONTAINS

- Venipuncture Arm Skin (Light Skin Tone)
- Venipuncture Arm Rest
- Concentrated Venous Blood - Starter Pack
- Venipuncture Arm Infusion Tube
- Basic Venipuncture Vein
- Gravity System Blood Supply

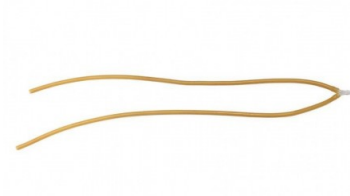
#### WORKS WITH

- Venipuncture Arm Skin (Light Skin Tone)
- Gravity System Blood Supply
- Basic Venipuncture Vein
- Venipuncture Arm Rest
- Concentrated Venous Blood - Starter Pack
- Venipuncture Arm Infusion Tube

## Basic Venipuncture Vein

**Price inquiry:** +48 605999769, [kontakt@openmedis.pl](mailto:kontakt@openmedis.pl)

Product code: SM03622



Replacement vein system for the Basic Venipuncture Arm (70304 & 70305). This product is not backwards compatible with the old Venipuncture Arm family

### OVERVIEW

- Veins can withstand up to 500 stabs from a 21g needle
- Realistic and palpable vein haptics promote accurate clinical use

### CLEANING

- Veins are easy to replace and are easy to clean, service, and maintain

### SAFETY

- Contains latex

### ANATOMY

- Represents the:
  - Basilic vein
  - Cephalic vein
  - Dorsal metacarpal veins

### WORKS WITH

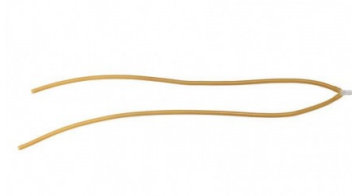
- Basic Venipuncture Arm (Light Skin Tone)
- Basic Venipuncture Arm (Dark Skin Tone)



## Basic Venipuncture Arm Vein - Latex Free

**Price inquiry:** +48 605999769, [kontakt@openmedis.pl](mailto:kontakt@openmedis.pl)

Product code: SM03623



Replacement vein system for the Basic Venipuncture Arm (70304 & 70305). This product is not backwards compatible with the old Venipuncture Arm family

### OVERVIEW

- Realistic and palpable vein haptics promote accurate clinical use

### CLEANING

- Veins are easy to replace and are easy to clean, service, and maintain

### SAFETY

- Latex free

### ANATOMY

- Represents the:
  - Basilic vein
  - Cephalic vein
  - Dorsal metacarpal veins

### WORKS WITH

- Basic Venipuncture Arm (Light Skin Tone)
- Basic Venipuncture Arm (Dark Skin Tone)

## ACF Pad - Venipuncture

**Price inquiry:** +48 605999769, [kontakt@openmedis.pl](mailto:kontakt@openmedis.pl)

Product code: SM03629



This soft tissue strap-on pad can be used to train in venipuncture and represents the antecubital fossa of the right arm.

### OVERVIEW

- Ideal for professional-to-patient communication and scenario based training using Simulated Patient
- Tough backing plate to prevent needlestick injuries
- Strap onto the antecubital fossa of the arm
- Veins are: self-sealing for repeated use, re-chargeable via a one-way valve, supplied with mock blood under pressure, and replaceable.

### VERSATILITY

- The pad can be connected to the Mock Blood Giving Set Product No. 60651

### CLEANING

- Replaceable epidermis is washable using soap and water when Limbs & Things mock blood is used

### SAFETY

- Contains latex
- Only use Mock Blood - Venous (250ml) Product No. 00223

### SKILLS GAINED

- Professional-to-patient communication
- Recognition of the vein pattern through palpation
- Insertion of a needle
- Insertion of cannula
- Management of blood flow

### CONTAINS

- Vein for ACF Pad
- Epidermis for ACF Pad
- Pad base with strap



#### WORKS WITH

- Mock Blood Giving Set
- Epidermis for ACF Pad
- Vein for ACF Pad

## Three Vein Pad - Venipuncture

**Price inquiry:** +48 605999769, [kontakt@openmedis.pl](mailto:kontakt@openmedis.pl)

Product code: SM03630



This soft tissue strap-on pad features 3 straight veins, one of which is pediatric size.

### OVERVIEW

- Veins are:
- Self-sealing for repeated use
- Replaceable
- Rechargeable via a one-way valve
- Supplied with mock blood under pressure

### VERSATILITY

- The pad can be connected to the Mock Blood Giving Set (Product No. 60651) to simulate blood flow. Only for use with Mock Blood - Venous (Product No. 00223)

### CLEANING

- Washable using soap and water
- Epidermis is replaceable

### SAFETY

- Tough backing plate to prevent needle stick injuries
- Veins contains latex

### ANATOMY

- Lumen sizes of veins (1 of each): 1mm, 4mm, 6mm

### SKILLS GAINED





- Professional-to-patient communication
- Insertion of a needle
- Insertion of cannula
- Management of blood flow

#### CONTAINS

- Epidermis for Three Vein Pad (Light Skin Tone)
- Vein for Three Vein Pad
- Pad base with strap

#### WORKS WITH

- Mock Blood Giving Set
- Vein for Three Vein Pad
- Epidermis for Three Vein Pad (Light Skin Tone)



## **Transport and storage case for SM01473**

**Price inquiry:** +48 605999769, [kontakt@openmedis.pl](mailto:kontakt@openmedis.pl)

Product code: SM03463



Lightweight, airtight and watertight case for SM01473. In-Line wheels for easy transport.



## Transport case for SM03464

**Price inquiry:** +48 605999769, [kontakt@openmedis.pl](mailto:kontakt@openmedis.pl)

Product code: SM03468



Transport case for SM03464.

## Mock Blood Giving Set

**Price inquiry:** +48 605999769, [kontakt@openmedis.pl](mailto:kontakt@openmedis.pl)

Product code: SM03639



A 1500 ml blood bag with luer-lock connector tube and stand, designed to provide a reservoir for Limbs & Things products requiring a mock blood supply.

### OVERVIEW

- Quick and easy to assemble
- Easy storage - collapsible stand
- Bag holds up to 1500ml
- Fluid flow shut-off clamp

### VERSATILITY

- This product can be used with Limbs & Things products requiring a mock blood supply including:
- Cutdown Pad
- ACF Pad & Extended ACF Pad
- Three Vein Pad
- Vermiform Appendix
- Gall Bladders

### CONTAINS

- Mock Blood/Fluid Bag
- Metal stand with base
- Luer lock tube adapter

### WORKS WITH

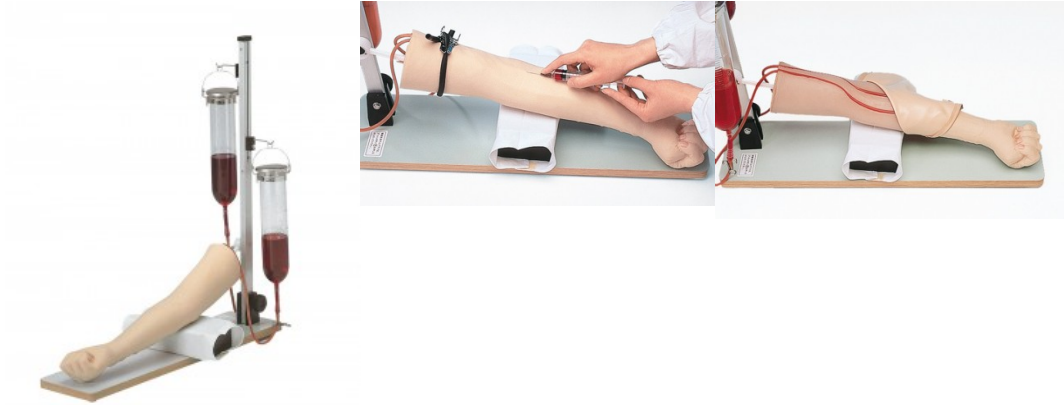
- ACF Pad - Venipuncture
- ACF Pad - Venipuncture (Dark Skin Tone)
- Three Vein Pad - Venipuncture
- Three Vein Pad - Venipuncture (Dark Skin Tone)
- Vermiform Appendix - Normal Anatomy
- Vermiform Appendix - Post-ileal
- Vermiform Appendix - Retrocecal
- Gall Bladder with Normal Anatomy
- Gall Bladder with Bifurcated Cystic Artery
- Gall Bladder with Short Cystic Duct
- Gall Bladder with Wide Common Bile Duct & Stones for Exploration



## Arm for injection exercises

**Price inquiry:** +48 605999769, [kontakt@openmedis.pl](mailto:kontakt@openmedis.pl)

Product code: SM02274



In this highly realistic model, intravenous injections can be made for blood donation or drug dosing. The highly realistic skin feels seemingly real after insertion of the needle and can be pierced multiple times. Veins and skin are replaceable.

## Arterial Puncture Arm

**Price inquiry:** +48 605999769, [kontakt@openmedis.pl](mailto:kontakt@openmedis.pl)

Product code: SM01315



This easy to use training aid is ideal for practice in and demonstration of drawing arterial blood samples and for monitoring blood gases. Puncture locations can be identified through palpation of the pulse of radial and brachial artery. Realistic arterial pressure produces a lifelike backflow of blood in the syringe, confirming proper needle location in the artery. Delivered with 3 syringes and tubules, artificial arterial blood, 2 replacement arterial sections and carrying case.

Size: 71 x 13 x 33 cm, weight: 7.3 kg

## Geriatric IV Training Arm

**Price inquiry:** +48 605999769, [kontakt@openmedis.pl](mailto:kontakt@openmedis.pl)

Product code: SM01467



Developed from a live cast, this arm is unique to the industry. Its properties include veins that roll away or disappear as you attempt to catheterize the vessel and a specially developed skin. Ideal for training anyone who works with the aged. Includes blood powder, IV bag, and carry bag.



## **Standard puncture core for SM01473**

**Price inquiry:** +48 605999769, [kontakt@openmedis.pl](mailto:kontakt@openmedis.pl)

Product code: SM03457



**Standard puncture core** for Epidural-Spinal Injection Simulator, includes 3 Spinal tubings, for SM01473.





## Geriatric Replacement Core for SM01473

**Price inquiry:** +48 605999769, [kontakt@openmedis.pl](mailto:kontakt@openmedis.pl)

Product code: SM03459



Geriatric puncture block, includes 3 Spinal tubings, for SM01473.



## **Obese Replacement Core for SM01473**

**Price inquiry:** +48 605999769, [kontakt@openmedis.pl](mailto:kontakt@openmedis.pl)

Product code: SM03458



Obese puncture block, includes 3 Spinal tubings, for SM01473.



## Human Vascular Access Sleeve Dark Skin

**Price inquiry:** +48 605999769, [kontakt@openmedis.pl](mailto:kontakt@openmedis.pl)

Product code: SM02957



Train on venipuncture and vascular access skills in life-like scenarios with no harm to participants with the **Human Vascular Access Sleeve**. Designed to fit most people and manikins, the sleeve is secured by the hook and loop tabs above and below SurgiReal's simulated RealFlow tissue pad.

Keeping safety as our top priority, all Vascular Access Sleeves are designed with puncture resistant material to make sure the needle won't make contact with your participant.

Training applications include, but are not limited to:

- Needle Alignment and Vascular Access,
- Palpating the Vessel,
- IV Placement.

### **BUILD YOUR SKILLS IN THREE STEPS:**

Sleeve attached to manikin,  
Sleeve attached to stationary person,  
Sleeve attached to a person mimicking real-life patient movement.

- 1 Sleeve,
- 1 Attachable Simulated Tissue Pad,
- 1 Package of Artificial Blood Powder,
- 1 IV Bag (1000 ml).

## Extended ACF Pad - Venipuncture

**Price inquiry:** +48 605999769, [kontakt@openmedis.pl](mailto:kontakt@openmedis.pl)

Product code: SM03631



This soft tissue pad is supplied on a base for benchtop training in venipuncture and insertion of cannula. It represents the antecubital fossa of the right arm.

### SKILLS GAINED

- Recognition of the vein pattern through palpation
- Insertion of a needle
- Introduction of cannula and use of micropore
- Removal of cannula
- Management of blood flow

### SAFETY

- Contains latex

## Venipuncture Arm Skin

**Price inquiry:** +48 605999769, [kontakt@openmedis.pl](mailto:kontakt@openmedis.pl)

Product code: SM03624



Replacement hand and arm skin for the Light Venipuncture Arm Range. Works with the basic (70304), standard (70302), and advanced (70300) Venipuncture Arm models.

This product is not backwards compatible with the old Venipuncture Arm family.

### OVERVIEW

- Increased realism of the arm (look and feel)
- Durable skin

### CLEANING

- Skin surface washable using soap and water

### SAFETY

- This product is latex free

### WORKS WITH

- Basic Venipuncture Arm (Light Skin Tone)
- Standard Venipuncture Arm (Light Skin Tone)
- Advanced Venipuncture Arm (Light Skin Tone)
- Basic Venipuncture Arm (Dark Skin Tone)
- Standard Venipuncture Arm (Dark Skin Tone)
- Advanced Venipuncture Arm (Dark Skin Tone)

## Venipuncture Arm Skin

**Price inquiry:** +48 605999769, [kontakt@openmedis.pl](mailto:kontakt@openmedis.pl)

Product code: SM03626



Replacement Arm Skin for Standard and Advanced Venipuncture Arms

### OVERVIEW

- Skin is durable
- Soft and flexible

### CLEANING

- Skins are easy to clean and replace

### SAFETY

- Latex Free

## Concentrated Venous Blood - Refill

**Price inquiry:** +48 605999769, [kontakt@openmedis.pl](mailto:kontakt@openmedis.pl)

Product code: SM03625



The Concentrated Venous Blood has been formulated to greatly improve the leak resistance of veins.

### REALISM

- Solution dilutes to the correct colour and viscosity of venous blood

### VERSATILITY

- This concentrate can be diluted further for use in other vacuum collection systems
- Reuse your existing Venous Blood Starter Pack jug to dilute the refill bottle

### WORKS WITH

- Surgical Female Pelvic Trainer (SFPT) Mk 2
- Birthing Simulator PROMPT Flex - Standard (Light Skin Tone)
- Postpartum Hemorrhage Module - PROMPT Flex
- Compression Suture Uterus Module - PROMPT Flex
- Postpartum Hemorrhage Kit - PROMPT Flex

## Standard Venipuncture Arm

**Price inquiry:** +48 605999769, [kontakt@openmedis.pl](mailto:kontakt@openmedis.pl)

Product code: SM03617



The new and improved Standard Venipuncture Arm is an ideal trainer for basic and advanced learning. Incorporating a unique skin-locking system (patent pending) and modular vein systems to accurately simulate venipuncture, IV cannulation, and IV infusion training.

What are the benefits of these new model Venipuncture arms?

**Unique Skin Locking System** - ensures the model is easy to re-skin whilst maintaining the lifelike palpability and haptics of the underlying basilic, cephalic, dorsal metacarpal and median cubital veins.

**Vein Gripping** - new innovative vein gripping mechanism works in conjunction with the new arm skin to further enhance realistic and repeatable training.

**Modular Metacarpal & ACF Veins** - splitting the basic vein structure into two separate modules allows for better cost efficiency, ease of use, and replacing sections individually will reduce waste.

**Gravity System Blood Supply** - improvements to stability of the mock blood flow simulator, and extended tubing, allow for greater versatility during simulated patient training exercises.

### SKILLS GAINED

- Intravenous Cannulation in dorsal metacarpal and ACF sites
- IV infusion
- Venipuncture
- Practice of aseptic techniques
- Communications skills when using a simulated patient

### OVERVIEW

- New and improved skin-locking system (patent pending) improves arm re-skinning after replacing a vein module
- New vein gripping system allows for easy re-fitting and positioning of veins
- Veins are palpable with realistic haptics for accurate clinical use
- Infusion tube allows for intravenous fluids to be administered





- Improved, gravity blood system

#### REALISM

- Arm provides a realistic blood flashback upon insertion of needle
- Improved arm skin offers a more realistic look and feel
- Vein module is palpable through the arm skin
- Realistic representation of the antecubital fossa (SCF) and metacarpal regions
- Gripping systems secures veins in a true-to-life position

#### VERSATILITY

- Arm is compatible with vacuum blood collection systems, needles & syringe, and IV cannulas
- Extended tubing allows for extra maneuverability in the classroom for use with a simulated patient

#### CLEANING

- Flush liquid from the vein and fluid system before storing your product
- Clean the skin surface with a damp soft cloth, using warm water and mild detergent
- Allow skin to thoroughly dry before storing

#### SAFETY

- Only use Concentrated Venous Blood supplied with the arms, or product numbers 00020 & 00021, other fluids may weaken or damage the venipuncture simulator
- Use water-based lubricant to fit arm skin over the venipuncture arm base
- Veins contain latex, however, these are covered by the silicone arm skin during procedures

#### ANATOMY

- Sites for peripheral venous cannulation
- Dorsal metacarpal vein in the hand
- Antecubital Fossa (ACF) vein in the arm
- Metacarpal Vein Module anatomy?
- Basilic vein?
- Cephalic vein?



- Dorsal metacarpal veins?
- ACF Vein Module anatomy?
- Basilic vein?
- Cephalic vein?
- Median cubital vein?

#### CONTAINS

- Venipuncture Arm Skin (Light Skin Tone)
- Venipuncture Arm Rest
- Concentrated Venous Blood - Starter Pack
- Venipuncture Arm Infusion Tube
- ACF Vein Module
- Metacarpal Vein Module
- Gravity System Blood Supply

#### WORKS WITH

- Venipuncture Arm Skin (Light Skin Tone)
- Gravity System Blood Supply
- ACF Vein Module
- Metacarpal Vein Module



## Adult Intraosseous Infusion Simulator

**Price inquiry:** +48 605999769, [kontakt@openmedis.pl](mailto:kontakt@openmedis.pl)

Product code: SM01464



Use to enhance training of intraosseous infusion procedures using B.I.G. and EZ-IO devices or almost any other intraosseous infusion devices available. The leg is fluid capable and a blood source is accessible through the injection site. Includes palpable landmarks, replaceable bones and skin, and a pressurized system to allow aspiration of fluid. Included with the simulator are 10 replaceable simulated bones, four replaceable skin pads, simulated blood, lubricating jelly, towels, I/O needle, and syringe with tubing in hard carry case.

Weight: 6.4 kg

## Shoulder for Joint Injection

**Price inquiry:** +48 605999769, [kontakt@openmedis.pl](mailto:kontakt@openmedis.pl)

Product code: SM01519



For practicing soft tissue joint injection used for the treatment of injuries and arthritis.

Developed in collaboration with Dr Trevor Silver, whose book on Joint and Soft Tissue Injection (edition 5) is included.

### Skills Gained:

- Patient posture and management
- Palpation techniques
- Injection on 5 specific sites:
  - subacromial space
  - acromioclavicular joint
  - bicipital groove
  - glenoid fossa from the anterior aspect
  - glenoid fossa from the posterior aspect

### Product Anatomy:

Represents normal anatomy precisely (both superficially and subdermally) for palpation purposes

### You will receive:

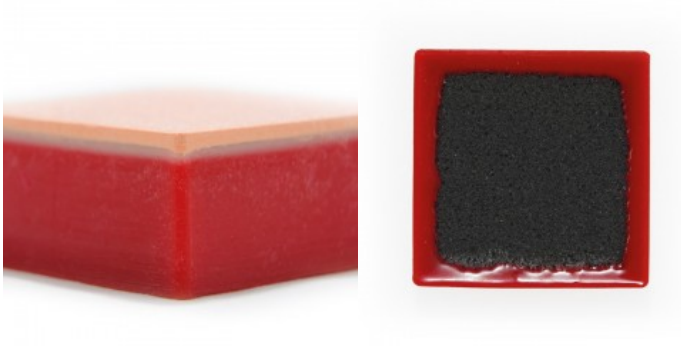
- 30094 1 Shoulder Needle Set
- 30020 1 Shoulder Skin
- 30023 1 'No-Trace' marker
- BKS1846195004 1 Joint and Soft Tissue Injection book
- 1 Shoulder base unit
- 1 Feedback console with batteries
- 1 Carry case



## Three Injection Depth Simulated Tissue

**Price inquiry:** +48 605999769, [kontakt@openmedis.pl](mailto:kontakt@openmedis.pl)

Product code: SM02955



This pad is built using our RealLayer Technology to simulate proper body wall feel as well as a foam core to allow for your injected fluids to easily squeeze out. **The Three Injection Depth Pad is designed to take you right into the muscle to practice the Intramuscular injection.**

## Intramuscular Injection Simulator

**Price inquiry:** +48 605999769, [kontakt@openmedis.pl](mailto:kontakt@openmedis.pl)

Product code: SM01629

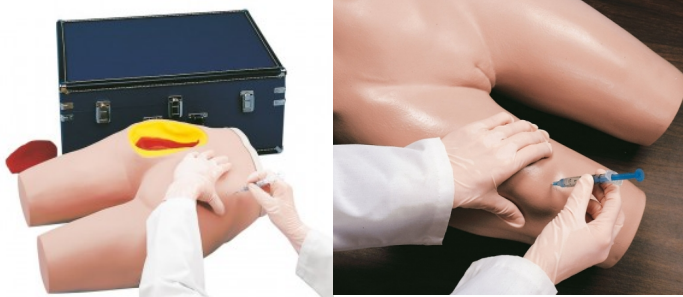


This highly realistic model consists of a special plastic that gives the user the feeling of working on an actual human patient. All anatomical structures are present and palpable. The injection sites are constructed in multiple layers, corresponding to the human anatomy, in order to convey a natural feeling during needle insertion. Sensors, located away from the correct injection sites, sound an acoustic alarm if needles are placed incorrectly. The injection can be administered realistically with fluid, since the model has a drainage system. The injection sites must be localized using the Hochstetter method. The skin and the injection fields are separately available and replaceable. The simulator can be operated on battery power. Comes complete with transport case.

## Intramuscular Injection Simulator

**Price inquiry:** +48 605999769, [kontakt@openmedis.pl](mailto:kontakt@openmedis.pl)

Product code: SM01314



Here is the perfect volunteer for training your beginning health care students to administer intramuscular injections. Always available for class demonstrations or practice by groups of 1 to 30, this intramuscular injection Simulator offers both visual and tactile learning. A simulated bony structure is embedded in the torso and represents the superior end of the femur, or greater trochanter, the posterior superior and anterior superior iliac spines, and the sacrum. The bony structure provides palpable anatomical landmarks so students can identify proper injection sites. A section of the upper, outer quadrant of the left gluteal area is cut away to allow students to visualize the underlying structures. The gluteus medius and gluteus maximus muscles, sciatic nerve, and vascular structures are clearly shown. Three types of intramuscular injections can be taught and practiced on this simulator: dorsogluteal, ventrogluteal, and vastus lateralis injections. Skin and muscle textures, as well as bone shape and position, closely resemble a live patient. As a result, perforation of the tissue with a needle duplicates the sensation of administering an actual injection. Comes with supply of syringes, and hard carrying case.

## I.m. Injection Trainer upper arm, fit-on type

**Price inquiry:** +48 605999769, [kontakt@openmedis.pl](mailto:kontakt@openmedis.pl)

Product code: SM02969



With this model you practice directly at the patient. It can be attached to a simulated patient or a nursing doll. With excellent haptics it is the ideal tool for teaching the i.m. injection technique at the upper arm. The built-in sensors recognize the correct puncture site as well as the correct depth of injection. If the position is correct, a green light indicates this. In case of wrong puncture a red light will be switched on. In case of correct puncture site but wrong depth both lamps will light at the same time. Fluid can be injected into the model.

Size: 32 x 12 x 11 cm, Weight: appr. 0.5 kg



## Simulator for i.m. injection and punch biopsy of the iliac crest

**Price inquiry:** +48 605999769, [kontakt@openmedis.pl](mailto:kontakt@openmedis.pl)

Product code: SM01626



Training model for training of the i.m. puncture procedure as well as for the procedure of iliac crest puncture. The model includes an artificial pelvis made of material similar to human bone which can be punctured repeatedly. Fluid aspiration is not possible. Used as i.m. model, the pelvis can be palpated to identify the correct injection position. The model is designed to be an economic disposable training aid and need to be replaced after intensive use. Life size.

## Buttocks Ventrogluteal Intramuscular Injection Simulator with feedback

**Price inquiry:** +48 605999769, [kontakt@openmedis.pl](mailto:kontakt@openmedis.pl)

Product code: SM2485



This realistic Buttocks Ventrogluteal Intramuscular Injection Simulator features life-like skin to teach accuracy of ventrogluteal intramuscular injections. The simulator gives instant feedback to indicate whether the needle position is correct or incorrect. Additionally, incorporate the included curriculum for a complete experience.

### Features

Users palpate the simulator to locate the injection site. During the injection procedure, the simulator gives instant feedback:

- Green light: Injection position is correct
- Red light and alarm: Injection position is incorrect
- Red light, green light and alarm: Injection is too deep  
Note: Alarm consists of a buzzer; alarm can sound if needle is in the green or red zones
- No lights:
  - Needle is outside of injection site
  - Needle is inserted at incorrect angle
  - Simulator is not turned on



## Buttocks Dorsogluteal Intramuscular Injection Simulator with Feedback

**Price inquiry:** +48 605999769, [kontakt@openmedis.pl](mailto:kontakt@openmedis.pl)

Product code: SM2486

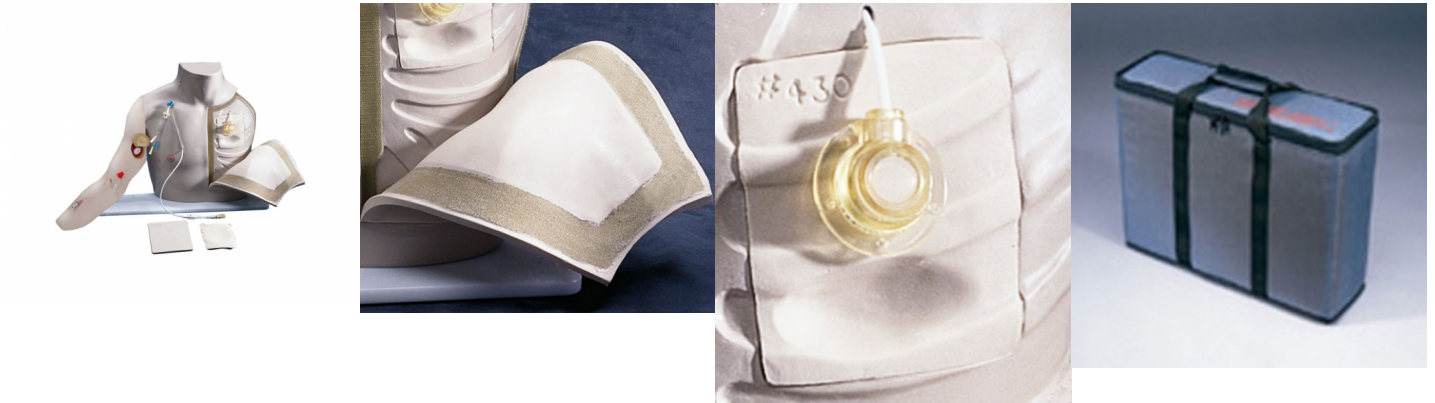


Use this Buttocks Dorsogluteal Intramuscular Injection Simulator to teach students to administer proper dorsogluteal injections. With the lights on this interactive trainer, users receive immediate feedback on location as well as technique. Incorporate the included curriculum for a complete experience.

## Chester Chest

**Price inquiry:** +48 605999769, [kontakt@openmedis.pl](mailto:kontakt@openmedis.pl)

Product code: SM01471

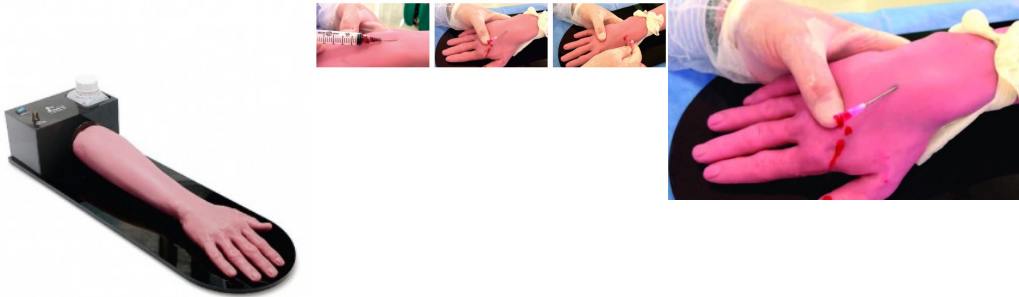


Chester Chest is a life-like model of a human torso, including a detachable right arm, that allows to learn and demonstrate competency with the most common types of long term vascular access devices (VAD's): implanted ports, central venous catheters (CVC's) and peripherally inserted central catheters (PICC's), within one simple, compact, and portable training model. All of the vascular access devices used are actual clinical devices not unrealistic imitations. This model offers a dramatically realistic tactile sensation when palpating the location of a port. This is achieved through a unique material duplicating the feel of human tissue. Additionally, inserts that come with the model permit the following difficult accessing to be practiced: deeply placed port, tilting or tipping port and wandering or shifting port. The distal ends of each device are attached to a simulated blood reservoir bag to permit fluid infusion or "blood" withdrawal. External jugular or subclavian catheters can be added through existing openings on the model. Chester Chest can be used in either an upright or supine position. Chester Chest is a complete unit consisting of a life-sized torso with neck and chin, detachable right arm, outer tissue flap, three difficult accessing inserts, an actual implanted port, CVC, PICC, openings for attachment of a subclavian or external jugular catheter, "blood" reservoir bags, tubing, talc baby powder and user's information.

## Hand simulator with forearm for venous puncture training

**Price inquiry:** +48 605999769, [kontakt@openmedis.pl](mailto:kontakt@openmedis.pl)

Product code: SM03750



The most realistic venipuncture simulator of its kind in the world. Its design meets the needs of doctors, nurses and health professionals in teaching venipuncture procedures. Mounted on reusable acrylic support, the HOP is equipped with peristaltic pump, allowing speed control and vascular pulse. It has a container for artificial blood accommodation. Its vessels are anatomically integrated into the subcutaneous cell space, which deepens in its path allowing various complexity activities. If a sequential punctures schedule is obeyed, the HOP allows for hundreds of procedures without leaving marks of the needles. The surgical unit is molded into Neoderma. This model does not contain Silicone or Latex in its composition. With the HOP the learning curve will be reduced, allowing practical teaching with extreme reality. It has never been easier to simulate a venoclysis with such excellence and effectiveness. This product can be recycled after its exhaustive use.

Components and spare parts:

- Acrylic base
- Surgical unit

## Model of hip anatomy / i.m. injection technique

**Price inquiry:** +48 605999769, [kontakt@openmedis.pl](mailto:kontakt@openmedis.pl)

Product code: SM01312



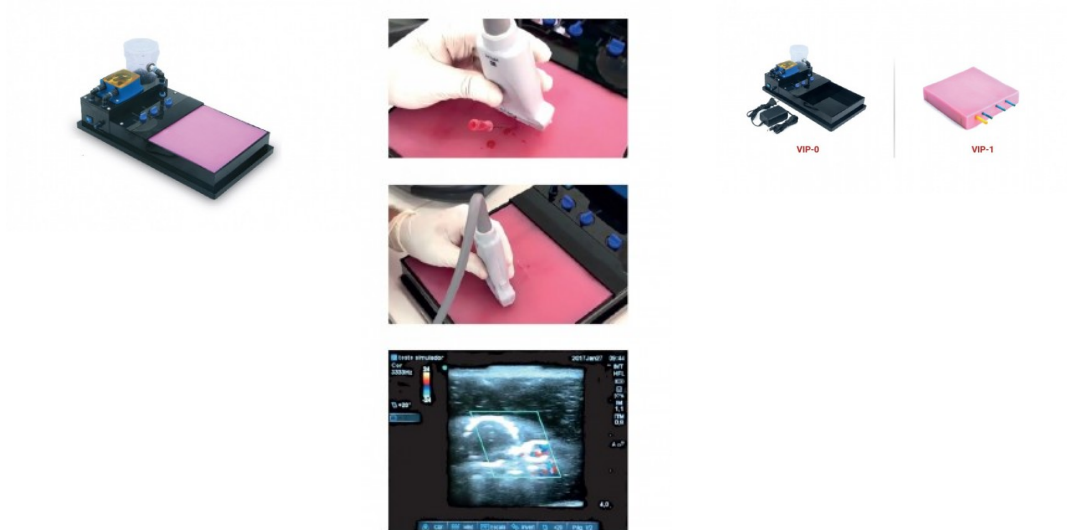
This model offers two functions in one model: on the right side it shows the anatomy of the pelvis including the bones and the muscles and nerves which are of importance for the injection. The student can transfer the anatomy visible on the right side to the left side and can then practice the technique of intramuscular injection there. The most important anatomical landmarks can be felt on the left side. The injection can be carried out with liquid. A green lamp lights up to confirm that the injection has been placed at the correct location. If it is placed at any other location, this is indicated by a red lamp and a buzzer sound.

Size: 38 x 35 x 22 cm, Weight: 5 kg

## SIMULATOR FOR ULTRASOUND-GUIDED VASCULAR INTERVENTIONS

**Price inquiry:** +48 605999769, [kontakt@openmedis.pl](mailto:kontakt@openmedis.pl)

Product code: SM03885



With the VIP (Vascular Injection Procedure) simulator for ultrasound guided vascular access procedures, it is possible to train hundreds of punctures with the insertion of guides and large-caliber catheters. The orifice closes after its removal, allowing further examination without persistent acoustic shadowing after 24 hours

The VIP allows the assessment of the arterial doppler, differentiating it from the venous vascular structure. The sensation of the depression of the vessel during puncture, the loss of resistance of the intraluminal needle, among other tactile perceptions, brings to the VIP characteristics similar only to those obtained in a real patient. The simulator consists of: **Surgical unit:** Made of Neoderma, it has superficial, medium and deep vascular structure. It is multifunctional, with 3 lines of mixed flow vessels (artery and vein) of approximately 20 cm with different calibers. The size of the vessels increases proportionally with depth. It allows several customization options such as atheroma plaques, shunts and more. **Base:** Composed by a structure in acrylic, a container for artificial blood, peristaltic pump with speed control, and pressostatic valve that interrupts the vascular flow under pressure, which provides an increase of the internal gauge in the vessel.

## Intraosseous Leg Adult Simulator

**Price inquiry:** +48 605999769, [kontakt@openmedis.pl](mailto:kontakt@openmedis.pl)

Product code: SM01589



Lower leg of an adult with the opportunity of training intraosseous access. Use the I/O Leg to enhance training and understanding of the procedures associated with B.I.G and EZ-IO devices. This I/O leg is not fluid capable and no blood source is accessible through the injection site. Bone and skin are replaceable. Aspiration of fluid is not possible.

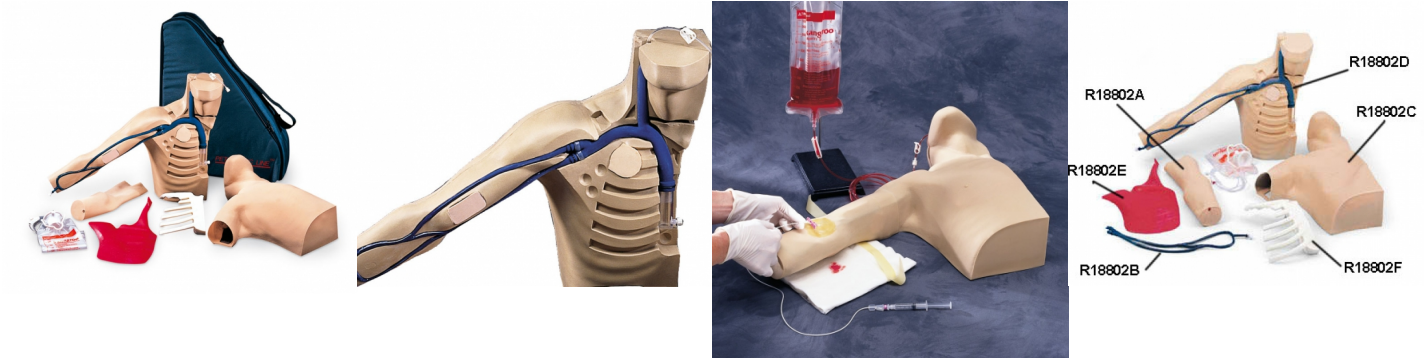
Weight: around 2kg



## Peter PICC Line

**Price inquiry:** +48 605999769, [kontakt@openmedis.pl](mailto:kontakt@openmedis.pl)

Product code: SM01466



The only available teaching model which allows review of the principles and tools necessary to validate the knowledge and skills needed for Peripherally Inserted Central Catheter (PICC) insertion. Peter PICC is a portable, lightweight, teaching model featuring anatomically correct superior vena cava, subclavian, jugular, median basilic, basilic and cephalic veins. The moveable chin simulates the occlusion of the jugular vein which can prevent the PICC from taking this path. This model enables staff to practice sterile technique in the set-up and insertion of the PICC line. Palpable ribs permit the practice of measuring proper catheter length from the insertion site to the second or third intercostal space and the confirmation of proper placement of the distal tip of the catheter in the viewable superior vena cava. Standard IV catheter placement is also possible in the major veins, which are barely visible through the translucent arm skin. Gain confidence and master the techniques of PICC insertion and then transfer these skills to patients. Peter PICC Line is an upper torso model including, neck, chin, right arm, ribs, muscle tissue, arm skin, body skin, arm vein set, body vein set with viewable superior vena cava, fluid bag with tubing and a durable, soft-sided cloth carrying case with an additional pouch for supplies.



## Endermic Injection Training Simulator

**Price inquiry:** +48 605999769, [kontakt@openmedis.pl](mailto:kontakt@openmedis.pl)

Product code: SM02416



This simulator provides training of intracutaneous injection to the inner forearm. A clear characteristic skin wheal is formed when proper injection procedure is followed. Life size model with life-like touch and resistance. Comes with 5 puncture pads and stand.

## Child Intraosseous Infusion / Femoral Access Leg

**Price inquiry:** +48 605999769, [kontakt@openmedis.pl](mailto:kontakt@openmedis.pl)

Product code: SM02988



**The Intraosseous Infusion/Femoral Access Leg** is mounted on a stand for use as an independent skills station.

**Features for intraosseous infusion practice include:** palpable landmarks including the patella, tibia, and tibial tuberosity; replaceable bones and skin; and a pressurized system to allow aspiration of fluid.

**For femoral access, features include:** palpable arterial pulse, realistic flashback from pressurized venous system, replaceable injection pad, and an articulated leg that allows proper positioning. Additional information:

- 15-gauge intraosseous infusion needle included.
- Includes case.
- Weight: 9 kg

## Mock Blood/Fluid Bag

Price: 0 EUR (~~0 EUR~~) + shipping cost

Product code: SM03638



Mock blood/fluid bag, a replacement for the Mock Blood Giving Set (60651)

This bag can also be ordered as a replacement for the fluid bag supplied with our Urinary Catheterization Trainers. It is not suitable for use with our Bag & Stand Venipuncture Arm Mock Blood Supply.

## Hand and Wrist for Joint Injection

**Price inquiry:** +48 605999769, [kontakt@openmedis.pl](mailto:kontakt@openmedis.pl)

Product code: SM01521



An articulated right hand & wrist used for practicing soft tissue joint injection for the treatment of injuries & arthritis.

Developed in collaboration with Dr Trevor Silver, whose book on Joint and Soft Tissue Injection (5th edition) is included.

### Skills Gained:

- Patient posture and management
- Identifying anatomical landmarks
- Relevance of digital movement for presentation of injection sites
- Injection in 4 specific areas:
  - carpal tunnel
  - trigger finger/tendon sheath injection
  - de Quervains sheath
  - first metacarpal joint
- Precise placement of needle to avoid median nerve

### Product Anatomy

Simulates normal anatomical reference points for:

- carpal tunnel
- palmaris longus tendon
- distal wrist crease
- tendon to the flexor carpi radialis

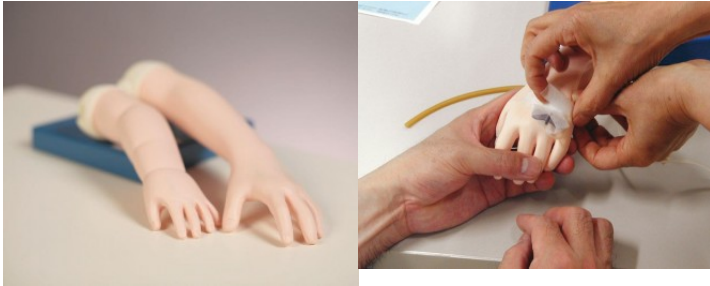
### You will receive:

- 30023 1 'No-Trace' Marker
- 30092 1 Hand and Wrist Needle Set
- 30040 1 Hand and Wrist Skin
- BKS1846195004 1 Joint and Soft Tissue Injection book
- 1 Hand and wrist base unit
- 1 Feedback console with batteries
- 1 Carry case

## A 3-year-old child's arm simulator to learn injection

**Price inquiry:** +48 605999769, [kontakt@openmedis.pl](mailto:kontakt@openmedis.pl)

Product code: SM02815



**Product information: A 3-year-old child's arm simulator to learn injection** Realistic vein puncture training arm. The veins are palpable and the stinging sensation is very realistic. Models include the forearm cephalic vein, the middle forearm vein, and the cephalic vein. During puncture, the veins behave realistically, there is a back flow. The skin closes automatically when the needle is removed. The arms are consumables and must be replaced after frequent use.

## Baby IV arm

**Price inquiry:** +48 605999769, [kontakt@openmedis.pl](mailto:kontakt@openmedis.pl)

Product code: SM01959



This model has a special, extremely thin, synthetic skin, and rubber tubing with appropriately small lumen and thin walls. The cephalic and basilic vein are accessible, as well as the dorsal venous arch on the hand. Comes with two i.v. bags with clamps, artificial blood, and winged infusion set.

Size: 20.5 x 12.7 x 12.7 cm

## One-year-old child's arm to learn injection

**Price inquiry:** +48 605999769, [kontakt@openmedis.pl](mailto:kontakt@openmedis.pl)

Product code: SM02817



Realistic vein puncture training arm. The veins are palpable and the stinging sensation is very realistic. Models include the forearm cephalic vein, the middle forearm vein, and the cephalic vein. During puncture, the veins behave realistically, there is a back flow. The skin closes automatically when the needle is removed.

The arms are consumables and must be replaced after frequent use.



## Foot and Ankle for Joint Injection

**Price inquiry:** +48 605999769, kontakt@openmedis.pl

Product code: SM01523



A foot and ankle for practicing soft tissue injection for the treatment of injuries and arthritis.

### Skills Gained:

- Patient posture and management
- Palpation techniques
- Identifying anatomical landmarks

### Injection sites for:

- metatarsophalangeal (MTP) joint
- Morton's neuroma
- tarsal tunnel
- plantar fascia
- sinus tarsi
- retrocalcaneal bursa
- tibiotalar joint
- subtalar joint

### You will receive:

- 30095 1 Foot and Ankle Needle Set
- 30101 1 Foot and Ankle Skin
- 70102 1 Foot and Ankle Musculature BKS1846
- 195004 1 Joint and Soft Tissue Injection book (5th Edition)
- 1 Foot and ankle base unit
- 1 Feedback console with batteries
- 1 Carry case

## Diabetic Injection model kit

**Price inquiry:** +48 605999769, [kontakt@openmedis.pl](mailto:kontakt@openmedis.pl)

Product code: SM01851



Made from realistic material, these teaching models facilitate technique practice on both an injection "skin" and a finger stick apparatus. The skin model may be strapped to the user's arm or leg to simulate a needle injection site, and the finger stick model may be held by the attached grip for lancet practice. Both can be punctured repeatedly. Replacement available. Comes with carrying case.

## Trainer for intramuscular injections with feedback

**Price inquiry:** +48 605999769, [kontakt@openmedis.pl](mailto:kontakt@openmedis.pl)

Product code: SM02490



A trainer in the form of buttocks for learning and training intramuscular injections. It allows you to acquire practical skills in the field of intramuscular injections before starting work with a real patient.

### Features:

- Three-layer model (skin, muscle and bone tissue)
- 1: 1 scale
- Leather made of realistic materials imitating human tissue
- Ventral and dorsal injections possible.
- Palpable anatomical landmarks
- Possibility of using fluids during the procedure
- Sound feedback - information about the correct or incorrect injection - if the student places the needle in the wrong place, then a sound signal is triggered
- Visual feedback - if the student has correctly performed the injection, the LED lights up green and red when the procedure is performed incorrectly
- The Possibility to arrange the trainer in various positions
- Battery or mains powered
- Dimensions: 33 x 26 x 38 cm,
- weight of the set about 8 kg.



## Intramuscular injection trainer with software

**Price inquiry:** +48 605999769, [kontakt@openmedis.pl](mailto:kontakt@openmedis.pl)

Product code: SM02491



A trainer in the form of buttocks for learning and training intramuscular injections. It allows you to acquire practical skills in the field of intramuscular injections before starting work with a real patient. The injections can be performed on the ventral and dorsal area. The ability to monitor the correctness of the procedure performance thanks to the included software with the evaluation function. Three-layer model (skin, muscle and bone tissue). The Possibility of using fluids during the procedure . Dimensions: 33x26x38cm, weight aprox. 10kg.

The evaluation software displays information about the injection site and depth, and allows you to mark pre- and post-injection activities in the checklist for later evaluation. Thanks to the training and evaluation modes, the trainer can be used both during self-training and an exam.

### **Set contains:**

- a trainer in the form of buttocks
- Power Supply
- fluid container
- battery compartment
- protective case
- user manual tripod

**IMPORTANT:** THE TABLET ON WHICH THE SOFTWARE SHOULD BE INSTALLED, IS NOT INCLUDED IN THE KIT.

## Diabetic injection pad

**Price inquiry:** +48 605999769, [kontakt@openmedis.pl](mailto:kontakt@openmedis.pl)

Product code: SM01852

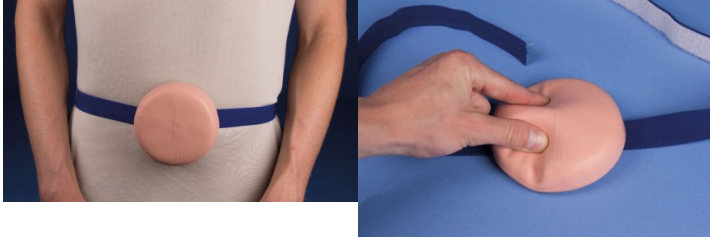


This pad that looks and feels like real human skin is ideal for diabetic instruction and injection practice. May be worn in specific body locations to allow patients to inject fluids into the pad to practice giving themselves injections. Pad is thick enough to accept all insulin needles. For safety purposes the oval pad has a hard plastic backing to prevent the needle from poking through.

## Diabetic injection pad, advanced version

**Price inquiry:** +48 605999769, [kontakt@openmedis.pl](mailto:kontakt@openmedis.pl)

Product code: SM01854



Unlike other injection pads this advanced pad gives the opportunity to practice with a normal and a hardened abdominal wall. It allows the student to form a realistic fold for injection. Due to special material it gives a lifelike impression of touch and feel, almost like in a real patient. The model is perforation proof and can be attached to the students' body using a flexible band.

## Intradermal Injection Simulator

**Price inquiry:** +48 605999769, [kontakt@openmedis.pl](mailto:kontakt@openmedis.pl)

Product code: SM01838



The simulator features a forearm from the wrist to just below the elbow. Vinyl skin provides realistic feel and appearance to ensure a realistic training experience. The simulator features eight sites for practicing intradermal injections. If fluid is properly injected, a characteristic skin welt will form. The welt is removed by withdrawing the fluid after practice. Each site is reusable by dozens of students. Supplied with sealant, syringe and storage box.

Size: 33 x 28 x 13 cm, weight: 0.9 kg

## Pressurised cannulation pad

**Price inquiry:** +48 605999769, [kontakt@openmedis.pl](mailto:kontakt@openmedis.pl)

Product code: SM02978



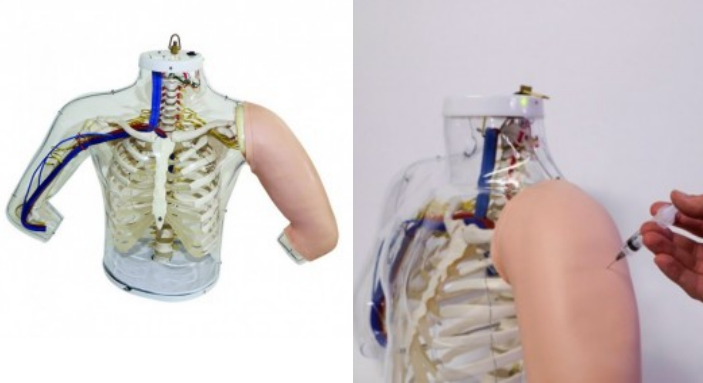
**The pressurised cannulation pad** has been introduced to provide a portable intravenous trainer and act as an alternative to using the traditional arm. These trainers are realistic and achieve relatively low running costs.



## Model of shoulder and arm anatomy / i.m. injection technique

**Price inquiry:** +48 605999769, [kontakt@openmedis.pl](mailto:kontakt@openmedis.pl)

Product code: SM01313



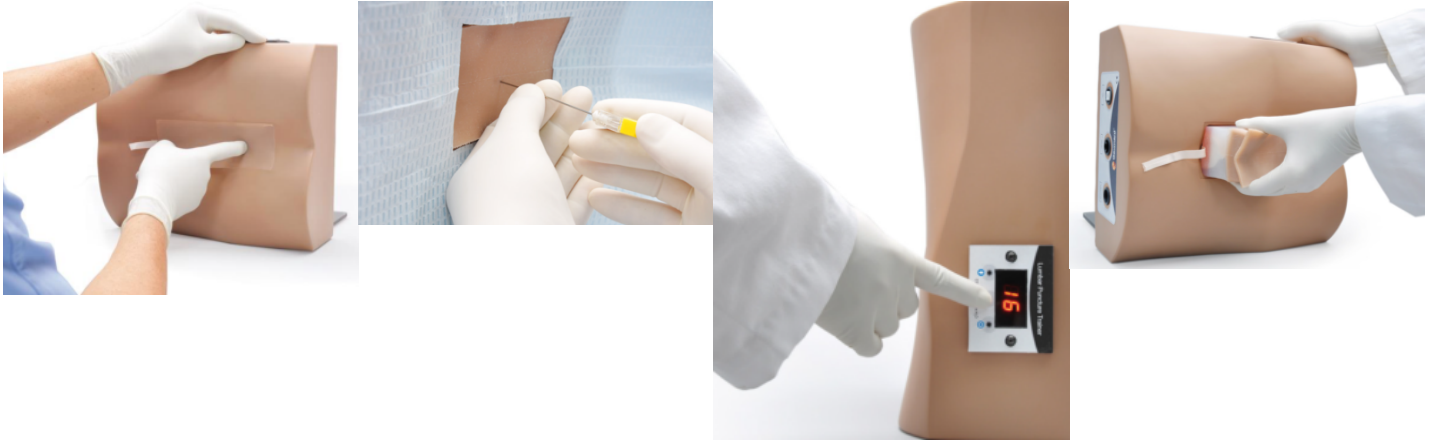
This model offers two functions in one model: on the right side it shows the anatomy of the upper arm and the shoulder including the bones and the muscles and nerves which are of importance for the injection. The student can transfer the anatomy visible on the right side to the left side and can then practice the technique of intramuscular injection there. The most important anatomical landmarks can be felt on the left side. The injection can be carried out with liquid. A green lamp lights up to confirm that the injection has been placed at the correct location. If it is placed at any other location, this is indicated by a red lamp and a buzzing sound.

Size: 50 x 75 x 30 cm

## Lumbar Puncture Trainer

**Price inquiry:** +48 605999769, [kontakt@openmedis.pl](mailto:kontakt@openmedis.pl)

Product code: SM03992



Provides realistic tactile feedback combined with a fluid supply and pressure system, allowing the collection of CSF and measurement of opening pressure. Ideal for practicing injection of local anesthesia, aseptic technique, needle insertion between vertebrae, lumbar puncture, and epidural.

Features - Replaceable spinal cord insert with skin layer, subcutaneous layer, connective tissue, and lumbar vertebrae - Anatomic features include: iliac crests, lumbar vertebrae L2 - L5, ligamentum flavum, epidural space, and dura - Needle insertion possible between vertebrae - Lifelike needle resistance, including pops when needle traverses ligamentum flavum and dura - Self-healing skin that allows 15 uses with an 18 gauge needle and 25 uses with a 22 gauge needle before replacement is necessary - Simple to fill simulated CSF and set fluid pressure, thereby allowing students to collect CSF and measure CSF opening pressure - Pressure system with simple push-button operation to increase or decrease pressure - LED displays pressure set-point ranging from low, medium to high pressure - Practice procedure in the left lateral decubitus or sitting position - Trainer can be used to simulate aseptic technique and local anesthetic at puncture site



## **Epidural-Spinal Injection Simulator GENESIS**

**Price inquiry:** +48 605999769, [kontakt@openmedis.pl](mailto:kontakt@openmedis.pl)

Product code: SM01473



The GENESIS Epidural-Spinal Injection Simulator is the ideal training simulator for common neuraxial blocks. This ultrasound compatible model contains anatomical structures found in the lumbar region and realistic dural puncture similar to a human patient. With the realistic loss of resistance and fluid filled intrathecal space users are able to locate the correct target sites. GENESIS is the beginning of lumbar block proficiency.

### Features:

- Spinal space (Fluid filled tubing simulates dural click and CSF confirmation)
- Epidural space (Simulate LOR technique)
- Vertebral bodies (Locate interspace with visible and palpable spinous processes)
- Ligamentum flavum (Tough and gritty texture provides realistic tactile feel)
- Iliac crest (Standard landmark for L4 spinous process)

### Training Techniques:

- Epidural LOR (Identify Epidural Loss of Resistance)
- Lumbar Puncture (Confirm Spinal Placement with Fluid Indication)
- Catheter Placement (Insert Epidural & Spinal Catheters)
- CSE Technique (Ideal for Combined Spinal Epidural Technique)
- Ultrasound Compatible (Increase Ultrasound Competency)

Additional puncture pad for geriatric and obese training available.  
Supplied with two puncture pads and sic spinal tubings.

## Vaccine IM Injection Trainer (Pack of 10)

**Price inquiry:** +48 605999769, [kontakt@openmedis.pl](mailto:kontakt@openmedis.pl)

Product code: SM03677



Allowing for quick and effective training, the Vaccine IM Injection Trainer facilitates the administration of vaccines via the intramuscular route. Provided as a pack of 10, this product enables mass tabletop learning in all training environments. The trainer features realistic and easily identifiable tissue layers that represent the dermis, fat, and muscle layers. The receptive anatomical layers make this an ideal tool for teaching correct needle positioning to beginners and to those with more clinical experience. The fluid absorbent pad allows learners to experience repeatable and realistic training. **SKILLS GAINED**

- Intramuscular injection and vaccination technique
- Management of tissue
- Allows for the discussion of needle size and angle of injection

### OVERVIEW

- Facilitates intramuscular injection
- Withstands liquid injection
- Realistic anatomical layers are easily identifiable
- Durable material is longlasting

### VERSATILITY

- Skin is soft and warm to the touch
- Realistic tissue layers facilitate true to life needle resistance
- Receptive muscle layer allows trainees to identify if the needle has travelled too far

### CLEANING

- Can be cleaned with all standard clinically used training products
- We recommend the use of a small amount of Milton disinfecting fluid when cleaning

### SAFETY

- When practicing injection, only use water
- Ensure the product is dried after use and before storage
- Latex free

### ANATOMY

- Dermis, fat and muscle layers
- Realistic elasticity of skin

## Baby Stap

**Price inquiry:** +48 605999769, [kontakt@openmedis.pl](mailto:kontakt@openmedis.pl)

Product code: SM02980



Reproduction of a **neonatal infant positioned for the practice of lumbar puncture techniques.**

Addictional information:

- Lateral decubitus position, upright position
- Realistic interchangeable spine with spinal cord may be palpated for location of correct puncture site
- Fluid may be infused

## Strap-on vaccination trainer for IM and subcutaneous injection

**Price inquiry:** +48 605999769, [kontakt@openmedis.pl](mailto:kontakt@openmedis.pl)

Product code: SM02417



This trainer enables intramuscular injection to be practiced, as is typically done when vaccinating. The model can be used as a vaccination trainer, but also as a normal IM injection trainer and as a subcutaneous injection trainer.

The trainer can be buckled and then simulates a human upper arm. A simulated and easily palpable shoulder anatomy serves as a landmark for the puncture. The back of the trainer is puncture-proof so that there is no danger to the "patient".

The injection can be done with normal needles and syringes, the injection of liquid is possible. The model can be dismantled so that the liquid can easily be removed after the exercise.

Thanks to the new material, the arm feels lifelike and the puncture points are not visible, so that many hundreds of punctures are possible before the vaccination trainer has to be replaced.

Product features:

- Intramuscular injection
- Subcutaneous injection
- Injecting liquid
- Anatomical landmarks
- High quality material

**Dimensions:** 17.5 x 8.5 x 5.0 cm

**Weight:** 300g

## THORAXIS Thoracic Neuraxial Simulator

**Price inquiry:** +48 605999769, [kontakt@openmedis.pl](mailto:kontakt@openmedis.pl)

Product code: SM03464



The THORAXIS Thoracic Neuraxial Simulator is the ideal training simulator for common neuraxial blocks. The ultrasound compatible model contains anatomical structures found in the thoracic region and realistic dural puncture similar to a human patient. With the realistic loss of resistance and fluid filled intrathecal space users are able to locate the correct target sites. THORAXIS forms the basis of your thoracic neuraxial training.

### Features:

- Spinal space (fluid filled tubing simulates dural click and CSF confirmation).
- Epidural space (simulate LOR technique).
- Vertebral bodies (locate interspace with visible and palpable spinous processes).
- Ligamentum flavum (tough and gritty texture provides realistic tactile feel).
- Scapular Angles (Superior and inferior angles of scapula serve as anatomical landmarks).

### Training Techniques:

- Epidural LOR (Identify Epidural Loss of Resistance)
- Catheter Placement (Insert Epidural & Spinal Catheters)
- Ultrasound Compatible (Increase Ultrasound Competency)

## Elbow for Joint Injection

**Price inquiry:** +48 605999769, [kontakt@openmedis.pl](mailto:kontakt@openmedis.pl)

Product code: SM01520



For practicing soft tissue joint injection used for the treatment of injuries and arthritis.

The arm is presented for the treatment of both Golfer's and Tennis elbow.

Developed in collaboration with Dr Trevor Silver, whose book on Joint and Soft Tissue Injection (5th Edition) is included.

### Skills Gained:

- Patient posture and management
- Palpation techniques
- Identifying anatomical landmarks and painful areas
- Injections for:
  - Tennis Elbow (lateral epicondylitis)
  - Golfer's Elbow (medial epicondylitis)
- Training in fan or cone infiltration techniques

### You will receive:

- 30023 1 'No-Trace' Marker
- 30081 1 Elbow Skin
- 30093 1 Elbow Needle Set
- BKS184619195004 1 Joint and Soft Tissue Injection book
- 1 Elbow base unit
- 1 Feedback console with batteries
- 1 Carry case





## **Replacement Fill Line and Syringe for SM01473**

**Price inquiry:** +48 605999769, [kontakt@openmedis.pl](mailto:kontakt@openmedis.pl)

Product code: SM03462



Replacement Fill line with two female luer connectors and one 30ml syringe for SM01473.



## **Fill Line and Syringe for SM03464**

**Price inquiry:** +48 605999769, [kontakt@openmedis.pl](mailto:kontakt@openmedis.pl)

Product code: SM03467

Fill Line and Syringe for SM03464.



## **Spinal Tubing for SM03464**

**Price inquiry:** +48 605999769, [kontakt@openmedis.pl](mailto:kontakt@openmedis.pl)

Product code: SM03466

Spinal Tubing for SM03464.



## **Replacement Thin wall Spinal Tubing for SM01473**

**Price inquiry:** +48 605999769, [kontakt@openmedis.pl](mailto:kontakt@openmedis.pl)

Product code: SM03461



Set of three thin wall standard spinal tubes for SM01473.



## Replacement Standard Spinal Tubing for SM01473

**Price inquiry:** +48 605999769, [kontakt@openmedis.pl](mailto:kontakt@openmedis.pl)

Product code: SM03460



Set of three standard spinal tubes for SM01473.

## Epidermis for Three Vein Pad

**Price inquiry:** +48 605999769, [kontakt@openmedis.pl](mailto:kontakt@openmedis.pl)

Product code: SM03636



Replacement Epidermis for Three Vein Pad Venepuncture

### SKILLS GAINED

- As part of the Three Vein Pad - Venepuncture

### SAFETY

- This product is now latex free

### WORKS WITH

- Three Vein Pad - Venipuncture



## **Spare Core for SM03464**

**Price inquiry:** +48 605999769, [kontakt@openmedis.pl](mailto:kontakt@openmedis.pl)

Product code: SM03465

Spare Core for SM03464.

## Advanced Injection Belly

**Price inquiry:** +48 605999769, [kontakt@openmedis.pl](mailto:kontakt@openmedis.pl)

Product code: SM01853



This soft stomach replica is an invaluable tool for showing how to properly insert and rotate the infusion set for insulin pumps, avoiding the 5 cm area around the navel, as well as giving many types of self-injections (including pen-style injections). Similar to the Injection Belly, but made of a material that creates a more realistic experience. The trainer has lifelike skin with what feels like real stomach tissue, along with the ability to pinch the skin. Backing keeps needles from going through. Adjustable straps allow the stomach to be attached to a manikin or human patient for simulation practice. The soft material can be punctured repeatedly without showing holes. Liquid injection is not recommended.

Size: 25.4 x 15.3 x 5.1 cm, Weight: 0.4 kg



## Advanced Venipuncture Arm

**Price inquiry:** +48 605999769, [kontakt@openmedis.pl](mailto:kontakt@openmedis.pl)

Product code: SM03618



The Advanced Venipuncture Arm can be used to accurately simulate venipuncture, IV cannulation, and IV infusion.

Limbs & Things venipuncture arms accurately represent the key haptics of veins in a male right arm. Using palpation, trainees can determine the location of the veins to draw a blood sample or administer an intravenous injection.

The mock blood system offers a real-life training experience. Trainees will experience realistic blood pressure, blood flashback when entering the vein, and stemmed flow with digital pressure.

### IMPROVEMENTS FOR A BETTER TRAINING EXPERIENCE

This model retains popular features of the original venipuncture range, including, realistic blood flashback, vein haptics and soft flexible skin. To increase user experience within the classroom, enhancements have been made to improve its ease of use and durability.

**Vein Gripping System** - Simplifying the re-veining process, the underlying arm now includes recesses for the veins. This allows for an accurate and secure placement with little to no chance of movement when re-applying the arm skin.

**Modular Veins** - The veins have been split into two separate pieces, the Metacarpal Vein Module and the ACF Vein Module. Having the two vein modules rather than one, trainees are able to use each section until it needs replacing, reducing waste and making the product more cost effective.

**Veins of the basilic, cephalic, dorsal metacarpal and median cubital regions** are all present in the advanced model.

**Unique Skin Locking System** - New skin designs (for both light and dark skin tones) utilise a peg system which secures the edges of the loose skin close to the underlying arm. Carefully positioned on the underside of the arm, the pegs won't interfere with any training scenarios.

**Pressurized System** - The improved fluid system operates at a realistic blood pressure, this reduces blood leakage from the veins and prolongs the life of the individual modules.

### SKILLS GAINED

- Intravenous Cannulation in dorsal metacarpal and ACF sites
- IV infusion
- Venipuncture
- Practice of aseptic techniques
- Communications skills when using a simulated patient



## OVERVIEW

- Vein structures are now modular with a separate ACF vein and Metacarpal Vein, allowing for replacement of individual parts
- New and improved skin-locking system (patent pending) improves arm re-skinning after replacing a vein module
- New vein gripping system allows for easy re-fitting and positioning of veins
- Advanced Pump System reduces internal leakage for a more user-friendly experience
- Veins are palpable with realistic haptics for accurate clinical use
- Infusion tube allows for intravenous fluids to be administered
- Includes pressurized blood system

## REALISM

- Arm provides a realistic blood flashback upon insertion of needle
- Improved arm skin offers a more realistic look and feel
- Veins in the metacarpal & ACF modules are palpable
- Realistic representation of the antecubital fossa (SCF) and metacarpal regions
- With the Advanced Pump, the advanced venipuncture arm operates at an accurate blood pressure
- Gripping systems secures veins in a true-to-life position

## VERSATILITY

- Arm is compatible with vacuum blood collection systems, needles & syringe, and IV cannulas
- Extended tubing allows for extra maneuverability in the classroom for use with a simulated patient

## CLEANING

- Flush liquid from the vein and fluid system before storing your product
- Clean the skin surface with a damp soft cloth, using warm water and mild detergent
- Allow skin to thoroughly dry before storing

## SAFETY

- Only use Concentrated Venous Blood supplied with the arms, or product numbers 00020 & 00021, other fluids may weaken or damage the venipuncture simulator
- Use water-based lubricant to fit arm skin over the venipuncture arm base
- Veins contain latex, however, these are covered by the silicone arm skin during procedures

## ANATOMY

- Sites for peripheral venous cannulation



- Dorsal metacarpal vein in the hand
- Antecubital Fossa (ACF) vein in the arm
- Metacarpal Vein Module anatomy?
- Basilic vein?
- Cephalic vein?
- Dorsal metacarpal veins?
- ACF Vein Module anatomy?
- Basilic vein?
- Cephalic vein?
- Median cubital vein?

#### CONTAINS

- Venipuncture Arm Skin (Light Skin Tone)
- Venipuncture Arm Rest
- Concentrated Venous Blood - Starter Pack
- Venipuncture Arm Infusion Tube
- Product Image
- ACF Vein Module
- Metacarpal Vein Module
- Pressurized Venipuncture Arm Mock Blood Supply
- Refill Bottle

#### WORKS WITH

- Venipuncture Arm Skin (Light Skin Tone)
- Pressurized Venipuncture Arm Mock Blood Supply
- ACF Vein Module
- Metacarpal Vein Module
- Venipuncture Arm Rest
- Refill Bottle
- Concentrated Venous Blood - Starter Pack
- Venipuncture Arm Infusion Tube



## Advanced Venipuncture Arm Vein

**Price inquiry:** +48 605999769, [kontakt@openmedis.pl](mailto:kontakt@openmedis.pl)

Product code: SM03627



Replacement vein to be used with Limbs & Things Advanced Venipuncture Arms range and Bag & Stand Advanced Venipuncture Arm range.

### SAFETY

- Contains latex



## Advanced Four-Vein Venipuncture Training Aid

**Price inquiry:** +48 605999769, [kontakt@openmedis.pl](mailto:kontakt@openmedis.pl)

Product code: SM02418



The new and improved Advanced Venipuncture Training Aid features four barely discernible blue veins in three different sizes.

Hinged top and base eliminate the need to pass components through the top.

- Leak resistant – Now featuring a single length of tubing, no connections needed
- No Velcro needed – Bubble trap and stopcock removal and replacement are confirmed by an audible “click”
- No Velcro needed – The hinged top has an integral molded hook for placement of blood bag

## Vein for ACF Pad

**Price inquiry:** +48 605999769, [kontakt@openmedis.pl](mailto:kontakt@openmedis.pl)

Product code: SM03632



Vein for use with the ACF Pad - Venipuncture

### SKILLS GAINED

- As part of the ACF Pad - Venepuncture training

### SAFETY

- This product is now latex free

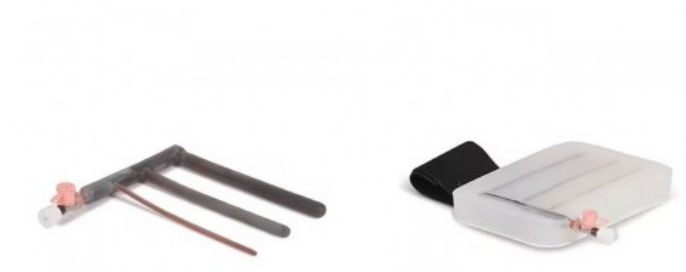
### WORKS WITH

- ACF Pad - Venipuncture

## Vein for Three Vein Pad

**Price inquiry:** +48 605999769, [kontakt@openmedis.pl](mailto:kontakt@openmedis.pl)

Product code: SM03633



Replacement vein for Three Vein Pad - Venipuncture

### SKILLS GAINED

- As part of the Three Vein Pad - Venepuncture

### SAFETY

- This product is now latex free

### WORKS WITH

- Three Vein Pad - Venipuncture