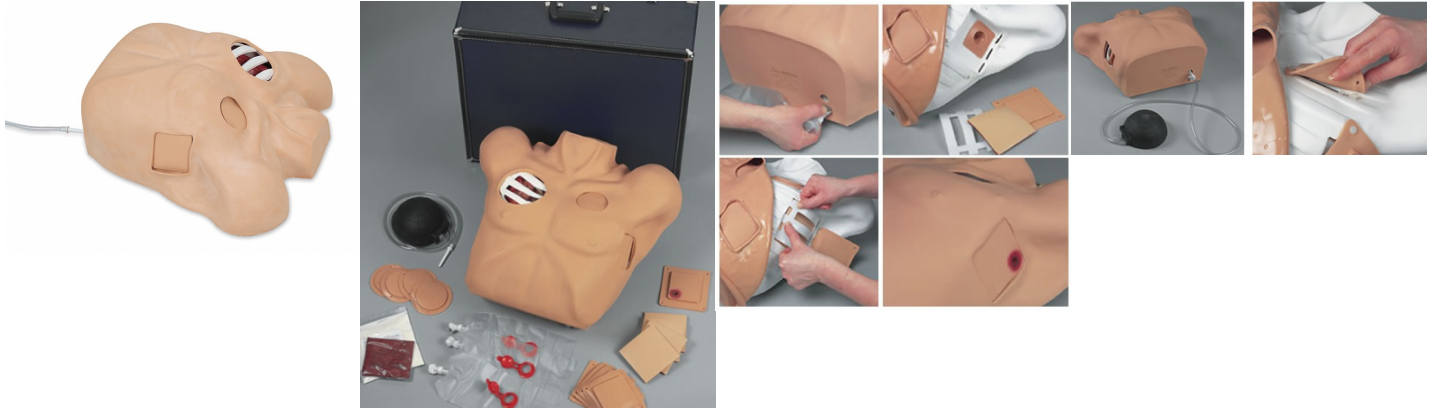


## Chest Tube Manikin

**Price inquiry:** +48 605999769, [kontakt@openmedis.pl](mailto:kontakt@openmedis.pl)

Product code: SM01634



Now there is a manikin designed specifically to teach the theory, anatomy, and skills needed to manage pre-hospital chest trauma, as well as ongoing chest tube maintenance. The right side of the manikin has two cut-away viewing areas to provide awareness of the anatomical relationships between the skin surface, musculature, ribs, and lungs. The left side has a pressurized tension pneumothorax site to relieve air that accumulated within the pleural space and is restricting lung inflation. There is also a site where chest tubes may be surgically placed to treat pleural effusion by draining fluids from the pleural space. The fluid colour, volume, and viscosity are controlled by the instructor. The Chest Tube Manikin is perfect for teaching the concepts and mechanics of closed water-seal drainage systems like "Pleur-Evac" type units. Manikin comes with two visual sites for chest tube maintenance, five replaceable surgical chest tube sites, five replaceable pneumothorax chest pads and a hard carrying case.

## Baby Umbi umbilical catheterization trainer

**Price inquiry:** +48 605999769, [kontakt@openmedis.pl](mailto:kontakt@openmedis.pl)

Product code: SM01836



Baby Umbi was designed for the practice of umbilical catheterization and is a reproduction of a female newborn infant.

- Retractable umbilical cord for actual catheterization
- Two arteries and vein molded into umbilical cord facilitate:
  - Low UAC
  - High UAC
  - Umbilical Vein Catheter
  - Securing and dressing procedures may be practiced

## Male Catheterization Module

**Price inquiry:** +48 605999769, [kontakt@openmedis.pl](mailto:kontakt@openmedis.pl)

Product code: SM03648



Male module for Male Catheterization Trainer, Standard Catheterization Trainer and Advanced Catheterization Trainer.

### SKILLS GAINED

- Correct handling of male anatomy
- Aseptic catheterization technique
- Withdrawal of catheter
- Urinary catheterization
- Fluid management

### REALISM

- Supple urethra and resistant sphincter providing realistic response

### VERSATILITY

- Ability to view catheter path
- Non-drip valve

### CLEANING

- Skin surface is washable using soap & water

### SAFETY

- Product is latex free (catheters provided contain latex)

### ANATOMY

- Male anatomy: pubic bone, realistic meatus, flaccid penis, replaceable and removable foreskin

### WORKS WITH

- Male Catheterization Trainer (Light Skin Tone)
- Female Catheterization Trainer (Light Skin Tone)
- Standard Catheterization Trainer Set (Light Skin Tone)
- Advanced Catheterization Trainer Set (Light Skin Tone)

## Suprapubic (Ultrasound) Catheterization Module

**Price inquiry:** +48 605999769, [kontakt@openmedis.pl](mailto:kontakt@openmedis.pl)

Product code: SM03650



The module can be used with ultrasound guidance, making this suitable for advanced levels of learning. This module allows trainees to practise scanning a full bladder to confirm the need for catheterization.

### SKILLS GAINED

- Suprapubic catheter insertion (blind and ultrasound guided)
- Transducer handling
- Full bladder scanning

### REALISM

- Ultrasound material closely mimics human skin
- Full bladder scan can be carried out to confirm the need for catheterization

### VERSATILITY

- Easily interchangeable module compatible with the common base for the Catheterization Range

### CLEANING

- Skin surface is washable using soap & water

### SAFETY

- Product is latex free (catheters provided contain latex)

### ANATOMY

- Rectus sheath for close-to-life catheter insertion
- Pubic bone
- Anatomically accurate bladder

### CONTAINS

- Suprapubic (Ultrasound) Catheterization Module (Light Skin Tone)
- Suprapubic Insertion Bungs (Ultrasound Guided) (Pack of 2, Light Skin Tone)

### WORKS WITH

- Pelvic Shell & Stand (Light Skin Tone)



## Standard Catheterization Trainer Set

**Price inquiry:** +48 605999769, [kontakt@openmedis.pl](mailto:kontakt@openmedis.pl)

Product code: SM03646



The Standard Catheterization Trainer Set contains both Male and Female modules for catheterization training. Interchangeable modules fit on the standard trainer base supplied, allowing for the practice of fundamental procedures, as well as more advanced skills of suprapubic management.

The clear sides of the male and female catheterization modules give the trainer the ability to visualise and monitor the procedure. Allowing real time feedback to be given to the students and assess the students' progress. Advances on this latest model include:

- Increased realism to male and female anatomy
- More realistic urethra enabling a life like feel and response to inserting the catheter
- Robust design that increases the longevity of the simulators and keeps on going costs down
- Modular design that allows for blind or monitored catheter insertion
- Practice of suprapubic management on the pre-positioned port of the female module

### SKILLS GAINED

- Correct handling of male and female anatomy
- Aseptic catheterization technique
- Withdrawal of catheter
- Urinary catheterization
- Fluid management
- Suprapubic catheter management on female anatomy

### OVERVIEW

- More robust design means longer lasting models, keeping on-going costs lower
- Ability to view catheter path when modules are used outside of the Pelvic Shell
- Improved Water System
- Softer, more realistic male/female anatomy
- Improved internal anatomy to allow for smoother insertion of catheter into the bladder

### REALISM

- Supple urethra & resistant sphincter providing realistic response
- Anatomically accurate bladder
- Flaccid penis with a removable foreskin for realistic male catheterization
- Increased mobility of the penis gives a more accurate representation of inserting the catheter
- Softer labia to practise parting using aseptic no touch technique
- Meatus is less obvious than previous simulator, allowing for truer to life experience when performing female catheterization
- Increased realism of anatomy, inclusion of a vaginal vault allows for potential insertion of catheter into the incorrect location



#### VERSATILITY

- Modules are removeable and easily interchangeable
- Module comes with removeable foreskins
- Ability to view the path of the catheter during procedures
- Non-drip valve
- Reusable double-sleeve catheter packaging is supplied for teaching aseptic technique
- Syringe supplied with water-based lubricant to simulate proprietary local anaesthetic gel

#### CLEANING

- Drain all water from the product
- Remove all catheters from the trainer
- Clean product surface with soft, damp cloth and mild detergent
- Allow trainer to dry completely before storing

#### SAFETY

- Components of the trainer are latex free
- Foley Catheter supplied is made of silicone coated latex
- Use supplied Milton Antifungal agent to sterilize water
- Always deflate the balloon before removing a catheter
- Only use mock gel that's supplied with the catheterization simulator
- Use lubricant when inserting the catheter

#### CONTAINS

- Male Catheterization Module
- Female Catheterization Module
- Pelvic Shell & Stand
- Catheterization Foreskins (x3)
- Water System
- Aseptic Catheterization Sleeves (x2)
- Lubricant Gel with Syringe
- Antifungal Agent (Milton)
- Water Extension Tubing
- Plastic Kidney Dish
- Size 14 French Foley Catheter

#### WORKS WITH

- Suprapubic Insertion (Ultrasound Guided) Unit (Light Skin Tone)
- Female Catheterization Module (Light Skin Tone)
- Male Catheterization Module (Light Skin Tone)

## Suprapubic Insertion (Ultrasound Guided) Unit

**Price inquiry:** +48 605999769, [kontakt@openmedis.pl](mailto:kontakt@openmedis.pl)

Product code: SM03645



The Suprapubic Insertion Unit can be used independently or combined with another catheterization trainer for a real to life simulation. This module allows for the practice of the surgical procedure of suprapubic catheterization and is made of echolucent silicone for ultrasound guided procedures.

What are the features of the suprapubic catheterization simulator? Ultrasound bladder scanning – allows for ultrasound identification of urine present in the bladder, reducing risks associated with CaUTI Ultrasound guided Suprapubic Catheterization – allows for advanced procedure training in Urology Allows for the practice of Blind Suprapubic Catheterization **SKILLS GAINED**

- Suprapubic catheter management on female anatomy
- Blind and ultrasound guided suprapubic catheter insertion
- Ultrasound bladder scanning on a full bladder

### OVERVIEW

- More robust design means longer lasting models, keeping on-going costs lower
- Ability to view catheter path when modules are used outside of the Pelvic Shell
- Improved Water System
- Softer, more realistic anatomy
- Improved internal anatomy to allow for smoother insertion of catheter into the bladder

### REALISM

- New ultrasound bladder scanning aides in identification of urine in the bladder, reducing risks associated with CaUTI
- Ultrasound guided catheterization allows for more advanced Urology training

### VERSATILITY

- Modules are interchangeable, and fit with the Male and Female Urinary Catheterisation models
- Ability to view the path of the catheter during procedures
- Non-drip valve

### CLEANING

- Drain all water from the product
- Remove all catheters from the trainer
- Clean product surface with soft, damp cloth and mild detergent
- Allow trainer to dry completely before storing

### SAFETY

- Components of the trainer are latex free





- Always deflate the balloon before removing a catheter

#### ANATOMY

- Pubic bone
- Rectus sheath
- Anatomically accurate bladder

#### PACKAGE SUPPLIED

- Suprapubic Catheterization Module
- Suprapubic Insertion Bungs (x2)
- Water System

#### WORKS WITH

- Advanced Catheterization Trainer Set (Light Skin Tone)
- Standard Catheterization Trainer Set (Light Skin Tone)
- Female Catheterization Trainer (Light Skin Tone)
- Male Catheterization Trainer (Light Skin Tone)



## Male and Female Catheterization, Ostomy Care Simulator

**Price inquiry:** +48 605999769, [kontakt@openmedis.pl](mailto:kontakt@openmedis.pl)

Product code: SM01505



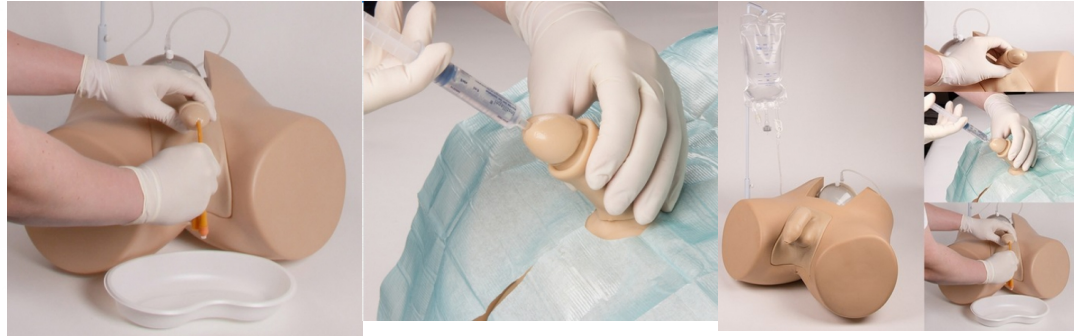
This “two-in-one” simulator allows:

- Catheterization: The interchangeable male and female genital organs feature a modular urethral valve to prevent fluid leakage.
- Ostomy care: 3 stomas (transverse colostomy, ileostomy, suprapubic) may be dilated and allow practice of irrigation procedures as well as application of ostomy bags.
- Each stoma is connected to an internal tank. Supplied with carrying bag.

## Bladder Catheterization Simulator, male

**Price inquiry:** +48 605999769, [kontakt@openmedis.pl](mailto:kontakt@openmedis.pl)

Product code: SM01504



A professional training simulator for learning catheterization. This model is also perfect for patient education.

### Main features:

- The innovative bladder is designed to provide a normal, anatomical and uninterrupted urethral path from the mouth to the bladder neck.
- The shape of the bladder has been specially designed to avoid unrealistic resistance that occurs in existing similar simulators available on the market
- The trainer also enables students to learn the palpation of the posterior part of the bladder in order to correctly assess the depth of catheter insertion
- A new type of valve that prevents unrealistic resistance when placing the coil into the bladder.
- The bladder is transparent which allows students to observe the position and depth of the catheter.
- The bladder easily connects to the fluid bag, which provides a "natural flow" of urine after properly performed catheterization

### The male part:

- The male genital has a replaceable foreskin, which is movable like in a human, to allow training of handling and hygiene procedures.
- The model has the most realistic urethra of all currently available catheterization trainers in the market.
- All for zones of the urethra are represented with corresponding anatomical shape and resistance if catheterized.
- By attaching a strap a narrowing of the prostate due to BPH or prostate cancer and the necessary use of larger or more rigid catheters can be simulated.

### More information:

- The trainer is available as a combination of both male and female genital inserts
- The possibility of using Foley catheters
- The set comes with a case.

## Male Catheterization and Enema Simulator

**Price inquiry:** +48 605999769, [kontakt@openmedis.pl](mailto:kontakt@openmedis.pl)

Product code: SM02283



The simulator imitates the special shape of the urethral canal of a male patient. A urinary bladder catheter is inserted according to a suitable technique to reach the bladder. Reaching the bladder causes urine (water) to flow out.

The feel of the penis is closely similar to that of a real human penis. Techniques such as disinfecting of surroundings of the urethral orifice and cleaning of the pubic area can be practiced. The main body can be separated at median line so that the shape of the urethra, the insertion position of the catheter, and the anatomical positional relationship can be studied. **Specifications:**

- The simulator is of actual size allowing the training of catheterization and glycerin enema for an adult male.
- Since soft and stretchable materials are used for the pubic area, the appearance and the feel are realistic when practicing.
- All techniques of catheterization, such as disinfecting of the pubic area, inserting, fixing, and removing the catheter, can be practiced.
- The simulator is shaped to imitate correct manipulation of the penis to allow passage through the urethra (Inserting the catheter will be difficult if the position of penis is not correct during insertion.)
- Techniques, such as pulling back the foreskin, disinfecting and cleaning, can be performed.
- The movability of the penis is also close to that of a real human penis.
- This allows practicing to fix the penis.
- The main body can be separated, and the urethral canal and bladder are transparent. This allows instruction of checking the insertion state of the catheter into the urethral canal and the balloon in the bladder.
- By exchanging the prostate, the urethral stricture due to hypertrophy can be reproduced.
- The attached tool exclusive to a glycerin enema can be inserted through the anus to the rectum. This allows practicing a glycerin enema.
- Size: 29 x 53 x 32 cm,
- Weight: 2.3kg

## Bladder Catheterization Simulator, female

**Price inquiry:** +48 605999769, [kontakt@openmedis.pl](mailto:kontakt@openmedis.pl)

Product code: SM01410



A professional training simulator for learning catheterization. This model is perfect for patient education.

### Main features:

- The innovative bladder is designed to provide a normal, anatomical and uninterrupted urethral path from the mouth to the bladder neck.
- The shape of the bladder has been specially designed to avoid unrealistic resistance that occurs in existing similar simulators available on the market
- The trainer also enables students to learn the palpation of the posterior part of the bladder in order to correctly assess the depth of catheter insertion
- A new type of valve that prevents unrealistic resistance when placing the coil into the bladder.
- The bladder is transparent which allows students to observe the position and depth of the catheter.
- The bladder easily connects to the fluid bag, which provides a "natural flow" of urine after properly performed catheterization

### The female part:

- The female genital is designed to require spreading the flexible labia to find the urethral meatus.
- The female urethral meatus is not immediately obvious and located very close to open vaginal canal highlighting potentials for unsuccessful catheterization.
- The urethra provides a realistic touch and feel when inserting a catheter.

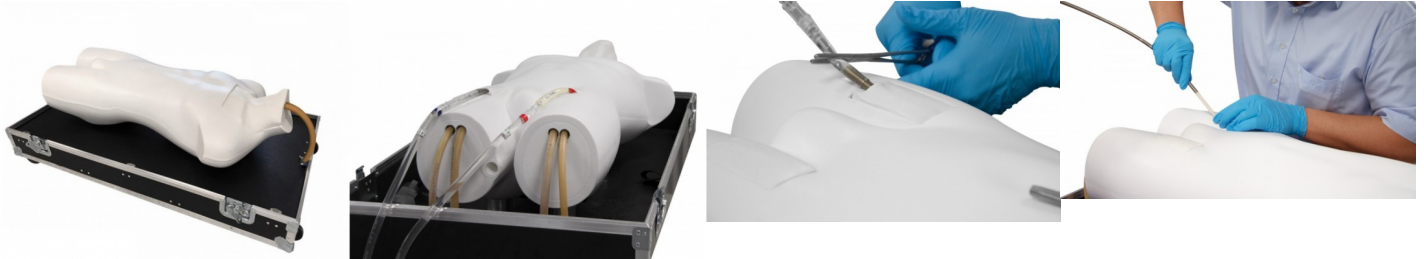
### More information:

- The trainer is available as a combination of both male and female genital inserts
- The possibility of using Foley catheters
- The set comes with a case.

## ECMO Trainer Professional

**Price inquiry:** +48 605999769, [kontakt@openmedis.pl](mailto:kontakt@openmedis.pl)

Product code: SM01581



Simulator for training of extracorporeal Oxygenation.

### Main features:

- This training model features an arterial and venous circulation, both operated with automated pumps which can be adjusted in flow volume and pulsating rate. A real patient can be simulated with all possible conditions that may happen during the procedure.
- The model is suitable for VA- and VV-ECMO.
- The puncture and cannulation can be practiced using real materials and instruments.
- The arteries do have a lumen of 8 mm, the veins of 10 mm. This allows the use of common catheter types without any problems.
- The puncture pads (one each at left and right femoral puncture site and one at the jugular puncture site) are made of ultrasound capable material.
- This allows ultrasound control of the needle until it reaches the vessel tube.
- The Trainer can be used with a real ECMO machine and provides realistic fluid volume for realistic operation of the machine.
- The trainer also has contact points for 4-lead ECG. The contact points can be connected to a ECG simulator (not included).
- The veins also do have connectors for flow rate measurement.

### Additional information:

- Because of the big diameters of the common cannulas big puncture holes are left after withdrawing the cannula, so the simulator has an integrated tube management system that allows the replacement of the vessel tubes within a few seconds and avoids the loss of precious training time due to vessel replacement.
- The tubing reservoirs are integrated into the models base invisibly, the base also works as lower part of the transport case with trolley rollers.
- The water reservoir and pump system are separated and can be connected to the trainer easily by quick lock connectors.

## Chest Drain and Needle Decompression Trainer

**Price inquiry:** +48 605999769, [kontakt@openmedis.pl](mailto:kontakt@openmedis.pl)

Product code: SM01524



Our Chest Drain and Needle Decompression Trainer has been designed to meet the specific requirements of healthcare professionals training in surgical or guidewire-assisted thoracostomy and thoracentesis.

This product allows for a variety of chest drain insertion techniques to be performed including ultrasound-guided techniques.

### Skills Gained:

- Needle decompression of a tension pneumothorax (at both the 2nd and 5th intercostal space)
- Open, or cut-down chest drain insertion: recognition of correct position, surgical incision, blunt dissection through chest wall, perforation of pleura and finger sweep
- Suture of tube to chest wall
- Ultrasound-guided chest drain insertion (Seldinger-type), including insertion of needle under direct vision and ultrasonic recognition of chest structures
- Management of pleural effusion

### You will receive:

- 60231 Needle Decompression Pads (x2)
- 60232 Advanced Chest Drain Pads (x2)
- 60234 Standard Chest Drain Pads (x2)
- 60240 Chest Drain Ribs (x12)
- 60235 Chest Drain Rib frame (Left)
- 60237 Chest Drain Rib frame (Right)
- 60238 Chest Drain Lung
- 60239 Chest Drain Diaphragm
- 1 Torso
- 1 Carry case

## Female catheterisation model

**Price inquiry:** +48 605999769, [kontakt@openmedis.pl](mailto:kontakt@openmedis.pl)

Product code: SM01941



What sets this model apart is its unparalleled realism in depicting the natural circumstances. The special plastic conveys to the user a realistic and lifelike feeling when inserting and removing the catheter. This model can be used to be attached to a doll or person.





## Infant Male and Female Catheterisation Trainer

**Price inquiry:** +48 605999769, [kontakt@openmedis.pl](mailto:kontakt@openmedis.pl)

Product code: SM01542



The Infant Male and Female Catheterization Trainer is an inexpensive 2-in-1 trainer that provides realistic practice of this difficult skills procedure.

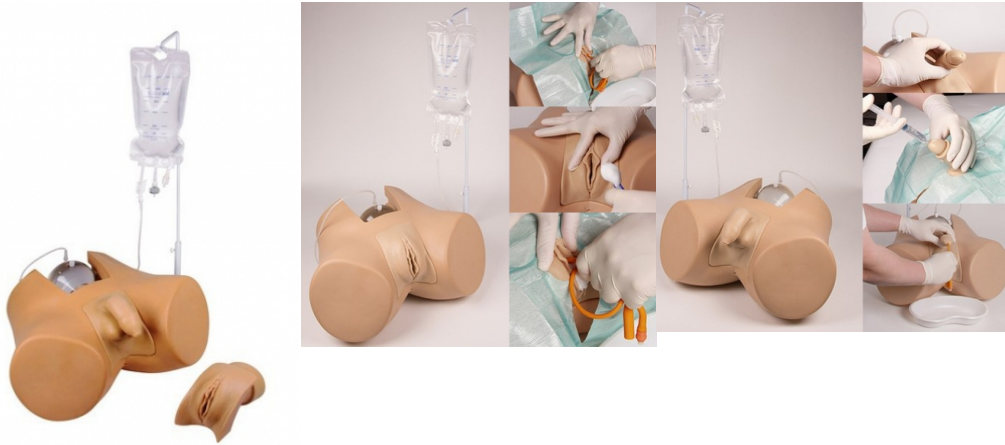
- Practice insertion, position, catheter balloon inflation and deflation
- Feel resistance and pressure as with a real patient
- Urine outflow when catheter is in proper position
- Practice both male and female infant catheterization training
- Anatomically realistic with both male and female genitals
- Genitals made of soft, lifelike material
- Replaceable male and female genitals
- Lower half of infant only

Includes: infant manikin, one male and one female genital insert, 2 oz. lubricant, infant Foley catheter, and instruction manual.

## Catheterization trainer with male genital and female genital insert

**Price inquiry:** +48 605999769, [kontakt@openmedis.pl](mailto:kontakt@openmedis.pl)

Product code: SM01583



Named after historical figures Henri Dunant and Florence Nightingale, our professional training models realistically simulate and educate on proper transurethral bladder catheterization in both the male and female human. Their namesake represents our appreciation for important milestones in medical innovation and our commitment to setting new standards for patient care education. The pelvic housing is modular, allowing for the use of both male and female genital inserts while strictly maintaining the unique anatomical position of each. The innovative bladder is designed to accommodate these different anatomies and guarantee an uninterrupted urethral path from meatus to bladder neck. Both anatomical inserts are made with high quality materials that closely simulate real human tissues in both appearance and feel while also remaining strong and durable.

The shape of the bladder is specially designed to avoid the unrealistic resistance present in existing catheterization trainers. This helps prevent students from trying to “palpate” the back of the bladder as a way to correctly gauge insertion depth. The bladder also utilizes a new innovative type of valve, preventing unnatural resistance when the catheter enters the bladder. The bladder is also transparent, enabling the student the option to see the catheter’s position and depth. This provides excellent training on foley catheters as the user can actually watch the balloon inflate and be seated. The bladder connects easily to a provided fluid bag which provides natural “urine” flow following successful catheterization.

The male genitalia insert includes a replaceable foreskin, with extremely realistic mobility, to allow training of retraction, handling and other hygiene procedures. The model has the most realistic urethra of all currently available catheterization trainers in the market. All four zones of the urethra are represented with corresponding anatomical shape and resistance during catheterization. Also included is a strap which, when attached will simulate narrowing of the prostate due to BPH or prostate cancer. This module is an excellent to teach and show students exactly why the use of larger or more rigid catheter is critical in this situation.

The female genitalia insert is designed to require spreading the flexible labia in order to locate the urethral meatus. The female urethral opening is not immediately obvious and is located very close to the open vaginal canal highlighting the potential for unsuccessful catheterization. The urethra provides a realistic amount of resistance and feels life-like during catheter insertion.

This training model is available as combination with both genital inserts or as a male only or female only version. The inserts are also available for individual purchase so that customers can easily upgrade from a unisex model to a dual



sex version.

Delivered with a soft carrying case.



## Male & Female Catheterisation Model Set

**Price inquiry:** +48 605999769, [kontakt@openmedis.pl](mailto:kontakt@openmedis.pl)

Product code: SM01305



Use this realistic catheterization model to practice the proper insertion of a lubricated catheter. May also be used for teaching anatomy and sterile cleansing techniques before, during, and after insertion. Anatomy includes rectum, uterus, bladder, pelvic bone, urethral sphincter muscle, clitoris, urethral meatus, labium minora, vagina, labium majora, pelvic diaphragm, and anus. Model uses any catheter size 16 FR or smaller. Model includes instructions with anatomy diagram, and a storage box.

## No Scalpel Vasectomy (NSV) Model

**Price inquiry:** +48 605999769, [kontakt@openmedis.pl](mailto:kontakt@openmedis.pl)

Product code: SM01304



A compact simulator developed to assist in learning a new method of vas occlusion. To provide realism, the leg stumps are designed to "get in the way" of the student as the procedure is mastered.

It features:

- Two removable scrotal skins
- Two testicles
- Two long vas assemblies can be advanced as needed for NSV exercises

Comes with Instruction manual.

## Advanced Male Catheterisation Trainer

**Price inquiry:** +48 605999769, [kontakt@openmedis.pl](mailto:kontakt@openmedis.pl)

Product code: SM01544



The Advanced Male Catheterisation Trainer allows the trainee to learn urethral and supra-pubic catheterisation, as well as how to demonstrate self-catheterisation to patients (using the optional Self Catheterisation Stand). It has accurate male urethral anatomy that is realistically soft and compliant. The feel of the catheter passing along the urethra into the bladder corresponds closely to real life.

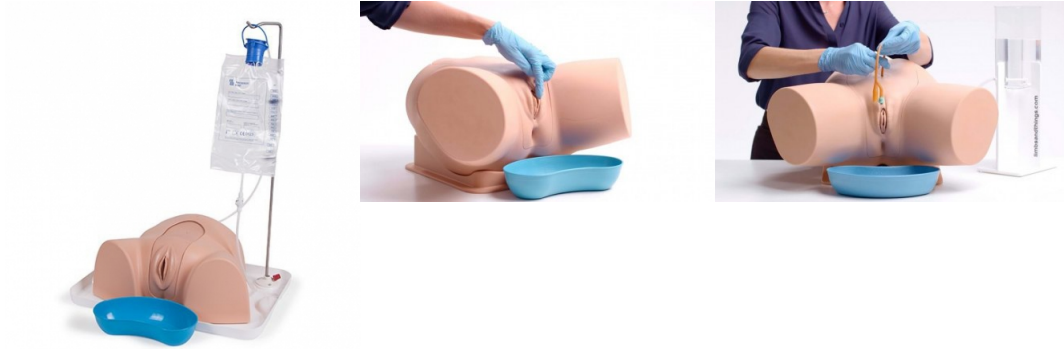
### Skills Gained:

- Correct handling of male anatomy
- Aseptic catheterisation technique
- Catheter placement: accepts catheters from 14-16 French
- Fluid management
- Withdrawal of catheter
- Intermittent self-catheterization (ISC) when used with the optional Self-Catheterization Stand
- Suprapubic catheter insertion and catheter management using Suprapubic Bung

## Advanced Female Catheterisation Trainer

**Price inquiry:** +48 605999769, [kontakt@openmedis.pl](mailto:kontakt@openmedis.pl)

Product code: SM01543



The Advanced Female Catheterisation Trainer allows the trainee to learn urethral and supra-pubic catheterisation, as well as how to demonstrate self-catheterisation to patients (using the optional Self Catheterisation Stand). It has accurate female urethral anatomy that is realistically soft and compliant. The feel of the catheter passing along the urethra into the bladder corresponds closely to real life

### Skills gained:

- Correct handling of female anatomy
- Aseptic catheterisation technique
- Catheter placement: accepts catheters from 12-16 French
- Fluid management
- Withdrawal of catheter
- Intermittent self-catheterisation (ISC) when used with the optional Self-Catheterisation Stand
- Suprapubic catheter insertion and catheter management using Suprapubic Bung

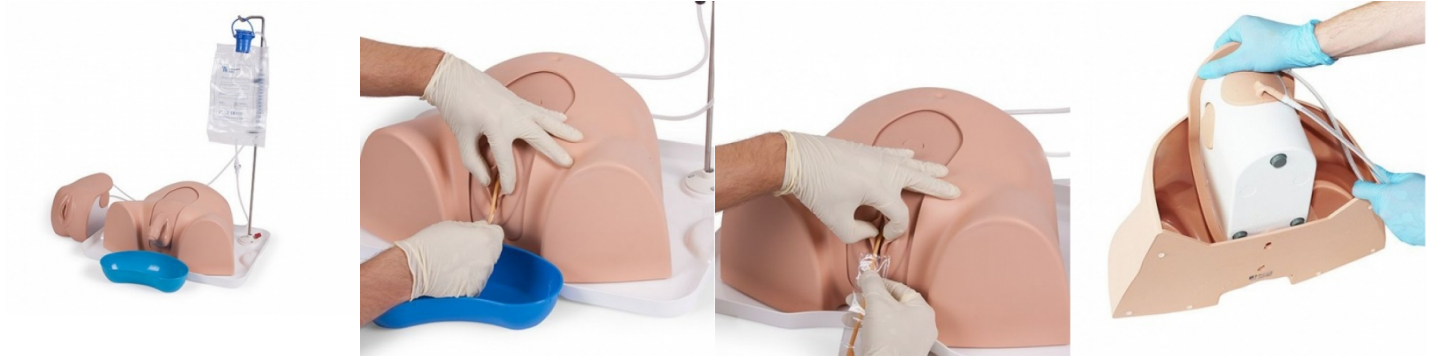
### You will receive:

- 60156 1 Female Catheterisation Unit
- 60158 1 Suprapubic Bung
- 60161 1 Standard Bung
- 50185 1 Milton Sterilising Fluid (500ml)
- 60160 1 Aseptic Catheterisation Sleeves (x2)
- 50183 1 Mock LA Gel with Syringe
- 60162 1 Female Catheterisation Sphincter Kit
- 1 x Pelvic shell
- 1 x Drip tray,
- bag stand
- 1500 ml fluid bag & plastic kidney dish
- 1 x12 French foley catheter (female)
- 1 x Female catheterisation sphincter kit1
- 2 Liter jug
- 1 x Carry case

## Advanced Catheterisation Trainer

**Price inquiry:** +48 605999769, [kontakt@openmedis.pl](mailto:kontakt@openmedis.pl)

Product code: SM01541



Our Advanced Catheterisation Trainer facilitates the teaching of urethral and supra-pubic catheterisation, as well as how to demonstrate self-catheterisation to patients (when using the optional Self Catheterisation Stand). It has interchangeable accurate male and female anatomy, and both sets of genitalia are realistically soft and pliable. The feel of the catheter passing along the urethra into the bladder corresponds closely to real life.

### Skills Gained:

- Correct handling of male and female anatomy
- Aseptic catheterisation technique
- Catheter placement: accepts catheters from 14-16 French (male) and 12-16 French (female)
- Fluid management
- Withdrawal of catheter
- Intermittent self-catheterisation (ISC) when used with the optional Self-Catheterisation Stand
- Suprapubic catheter insertion and catheter management using Suprapubic Bung



## Female Catheterization Module

**Price inquiry:** +48 605999769, [kontakt@openmedis.pl](mailto:kontakt@openmedis.pl)

Product code: SM03649



A replacement part for the Female Catheterization Trainer, Standard Catheterization Trainer Set and Advanced Catheterization Trainer Set.

### SKILLS GAINED

- Correct handling of female anatomy
- Aseptic catheterization technique
- Withdrawal of catheter
- Urinary catheterization
- Suprapubic catheter management fluid management

### REALISM

- Supply urethra and resistant sphincter providing realistic response

### VERSATILITY

- Ability to view catheter path
- Non-drip valve

### CLEANING

- Skin surface is washable with soap and water

### SAFETY

- Product is latex free (catheters provided contain latex)

### ANATOMY

- Soft labia allow trainees to practice parting using aseptic no-touch technique
- Subtle meatus to simulate a more realistic learning experience
- Presence of vaginal vault allows insertion of catheter in the incorrect location
- Pre-ported suprapubic catheter
- Pubic bone

### WORKS WITH

- Standard Catheterization Trainer Set (Light Skin Tone)
- Female Catheterization Trainer (Light Skin Tone)
- Advanced Catheterization Trainer Set (Light Skin Tone)

## Basic Catheterisation Trainer Value Set

**Price inquiry:** +48 605999769, [kontakt@openmedis.pl](mailto:kontakt@openmedis.pl)

Product code: SM01545



This cost effective Value Set contains a basic version of each of the Male and Female Catheterisation Trainers. These basic versions do not contain suprapubic bungs. The Catheterisation Trainers allows the trainee to learn urinary catheterisation techniques. The feel of the catheter passing along the urethra into the bladder corresponds closely to real life.

### Skills Gained:

- Correct handling of male and female anatomy
- Aseptic catheterisation technique
- Catheter placement: accepts catheters from 14-16 French (male) and 12-16 French (female)
- Fluid management and withdrawal of catheter

You will receive:

### Male

- 60152 1 Male Catheterisation Unit
- 60154 1 Catheterisation Foreskin (Pack of 3)
- 60161 1 Standard Bung
- 50185 1 Milton Sterilising Fluid (500ml)
- 60160 2 Aseptic Catheterisation Sleeves
- 50183 1 Mock LA Gel with Syringe
- 60159 1 Male Catheterisation Sphincter Kit
- 1 pelvic shell
- 1 drip tray, bag stand, 1500 ml fluid bag
- 1 plastic kidney dish
- 1 14 French foley catheter (male)
- 1 2 liter jug
- Carry Case

### Female:

- (60156) 1 x Female Catheterisation Unit ,
- (60161) 1x Standard Bung,
- (50185) 1x Milton Sterilising Fluid (500ml),
- (60160) 2x Aseptic Catheterisation Sleeves,
- (50183) 1x Mock LA Gel with Syringe,
- (60162) Female Catheterisation Sphincter Kit,



- 1 pelvic shell,
- 1 drip tray, bag stand,
- 1500 ml fluid bag ,
- 1 plastic kidney dish,
- 1 12 French foley catheter (female),
- 1 2 liter jug, Carry Case.