

Model - arterial leg ulcer, epithelization phase, large size

Price inquiry: +48 605999769, kontakt@openmedis.pl

Product code: SM01990



Produkt information: Model - arterial leg ulcer, epithelization phase, large size

A realistic wound model simulating leg ulcer in the epithelization phase as a result of peripheral arterial vascular occlusion.

Additional information:

- The large surface of the model makes it ideal, for example, for sticking on the lower leg
- This large wound is perfect for adhering at the lower leg and adheres by itself.
- For longer use, it can be fixed with a special skin glue.
- All materials used in this product are dermatologically harmless.
- Model supplied with a case.

Model - arterial leg ulcer, epithelization phase, small size

Price inquiry: +48 605999769, kontakt@openmedis.pl

Product code: SM01996



Produkt information: Model - arterial leg ulcer, epithelization phase, small size

A realistic wound model simulating leg ulcer in the epithelization phase as a result of peripheral arterial vascular occlusion.

Additional information:

- The small surface of the model covers only a part of the lower leg
- For longer use, it can be fixed with a special skin glue.
- All materials used in this product are dermatologically harmless.
- Model supplied with a case.

Model - arterial leg ulcer, exudation phase, large size

Price inquiry: +48 605999769, kontakt@openmedis.pl

Product code: SM01992



Produkt information: Model - arterial leg ulcer, exudation phase, large size

A realistic wound model simulating leg ulcer in the exudation phase as a result of peripheral arterial vascular occlusion.

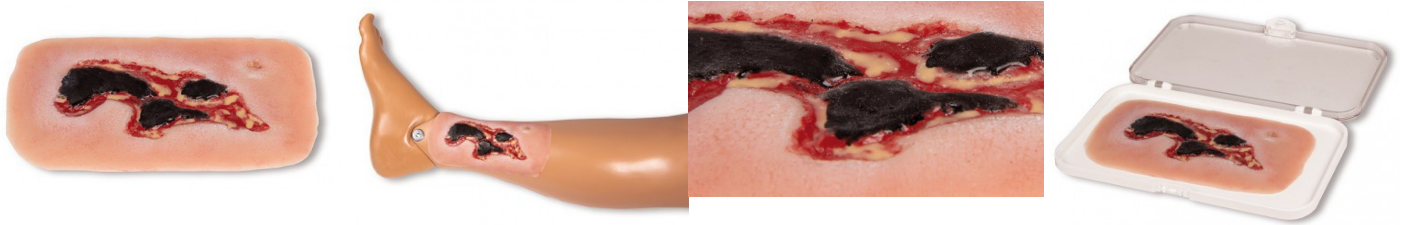
Additional information:

- The large surface of the model makes it ideal, for example, for sticking on the lower leg
- This large wound is perfect for adhering at the lower leg and adheres by itself.
- For longer use, it can be fixed with a special skin glue.
- All materials used in this product are dermatologically harmless.
- Model supplied with a case.

Model - arterial leg ulcer, exudation phase, small size

Price inquiry: +48 605999769, kontakt@openmedis.pl

Product code: SM01998



Produkt information: Model - arterial leg ulcer, exudation phase, small size

A realistic wound model simulating leg ulcer in the exudation phase as a result of peripheral arterial vascular occlusion.

Additional information:

- The small surface of the model covers only a part of the lower leg.
- For longer use, it can be fixed with a special skin glue.
- All materials used in this product are dermatologically harmless.
- Model supplied with a case.

Model - arterial leg ulcer, granulation phase, large size

Price inquiry: +48 605999769, kontakt@openmedis.pl

Product code: SM01991



Produkt information: Model - arterial leg ulcer, granulation phase, large size

A realistic wound model simulating leg ulcer in the granulation phase as a result of peripheral arterial vascular occlusion.

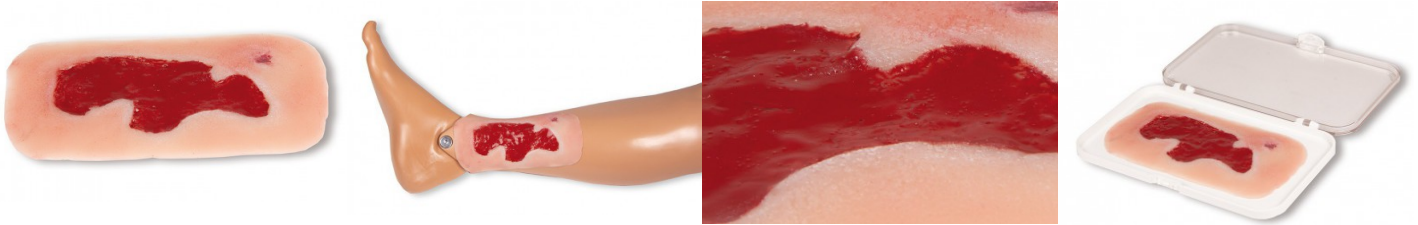
Additional information:

- The large surface of the model makes it ideal, for example, for sticking on the lower leg
- This large wound is perfect for adhering at the lower leg and adheres by itself.
- For longer use, it can be fixed with a special skin glue.
- All materials used in this product are dermatologically harmless.
- Model supplied with a case.

Model - arterial leg ulcer, granulation phase, small size

Price inquiry: +48 605999769, kontakt@openmedis.pl

Product code: SM01997



Produkt information: Model - arterial leg ulcer, granulation phase, small size

A realistic wound model simulating leg ulcer in the granulation phase as a result of peripheral arterial vascular occlusion.

Additional information:

- The small surface of the model covers only a part of the lower leg
- For longer use, it can be fixed with a special skin glue.
- All materials used in this product are dermatologically harmless.
- Model supplied with a case.

Wound moulage venous leg ulcer, large, epithelisation phase

Price inquiry: +48 605999769, kontakt@openmedis.pl

Product code: SM02904



This self-adhesive wound represents a **venous leg ulcer, a substance defect in the tissue of the lower leg as a result of a chronic venous insufficiency**. The shown **epithelisation phase** represents the most common ulcer disease (60% to 80% of all ulcer diseases) in the stage of building epithelial tissue, finally leading to close the wound.

Additional informations:

- This large wound is perfect for adhering at the lower leg and adheres by itself.
- For longer use, it can be fixed with a special skin glue.
- All materials used in this product are dermatologically harmless.
- Supplied with storage box.

Wound moulage venous leg ulcer, small, epithelisation phase

Price inquiry: +48 605999769, kontakt@openmedis.pl

Product code: SM02902



This self-adhesive wound represents a **venous leg ulcer**, a substance defect in the tissue of the lower leg as a **result of a chronic venous insufficiency**. The shown **epithelisation phase** represents the most common ulcer disease (60% to 80% of all ulcer diseases) in the stage of building epithelial tissue, finally leading to close the wound.

Additional informations:

- This small wound is perfect for adhering at the ankle or lower leg and adheres by itself.
- For longer use, it can be fixed with a special skin glue.
- All materials used in this product are dermatologically harmless.
- Supplied with storage box.

Wound moulage venous leg ulcer, large, granulation phase

Price inquiry: +48 605999769, kontakt@openmedis.pl

Product code: SM02903



This self-adhesive wound represents a **venous leg ulcer, a substance defect in the tissue of the lower leg as a result of a chronic venous insufficiency**. The shown **granulation phase** represents the most common ulcer disease (60% to 80% of all ulcer diseases) in the stage of building granulation tissue. In this stage it is very important to use the suitable dressing to prevent wound healing disorders (fibrin persistence).

Additionaly informations:

- This large wound is perfect for adhering at the lower leg and adheres by itself.
- For longer use, it can be fixed with a special skin glue.
- All materials used in this product are dermatologically harmless.
- Supplied with storage box.

Wound moulage venous leg ulcer, small, granulation phase

Price inquiry: +48 605999769, kontakt@openmedis.pl

Product code: SM02901



This self-adhesive wound represents a **venous leg ulcer**, a substance defect in the tissue of the lower leg as a result of a **chronic venous insufficiency**. The shown granulation phase represents the most common ulcer disease (60% to 80% of all ulcer diseases) in the stage of building granulation tissue. In this stage it is very important to use the suitable dressing to prevent wound healing disorders (fibrin persistence).

Additional informations:

- This small wound is perfect for adhering at the ankle or lower leg and adheres by itself.
- For longer use, it can be fixed with a special skin glue.
- All materials used in this product are dermatologically harmless.
- Supplied with storage box.

Wound moulage venous leg ulcer, large, exudation phase

Price inquiry: +48 605999769, kontakt@openmedis.pl

Product code: SM02006



This self-adhesive wound represents a venous leg ulcer, a substance defect in the tissue of the lower leg as a result of a chronic venous insufficiency. The shown exudation phase represents the most common ulcer disease (60% to 80% of all ulcer diseases) in its untreated condition. Fibrin and excessive wound exsudate have to be removed during the wound cleaning. This small wound is perfect for adhering at the ankle or lower leg and adheres by itself. For longer use, it can be fixed with a special skin glue. All materials used in this product are dermatologically harmless.

Supplied with storage box.

Wound moulage venous leg ulcer, small, exudation phase

Price inquiry: +48 605999769, kontakt@openmedis.pl

Product code: SM02005



This self-adhesive wound represents a venous leg ulcer, a substance defect in the tissue of the lower leg as a result of a chronic venous insufficiency. The shown exudation phase represents the most common ulcer disease (60% to 80% of all ulcer diseases) in its untreated condition. Fibrin and excessive wound exsudate have to be removed during the wound cleaning. This small wound is perfect for adhering at the ankle or lower leg and adheres by itself. For longer use, it can be fixed with a special skin glue. All materials used in this product are dermatologically harmless.

Supplied with storage box.