

Training phantom for ultrasonic detection of tissue damage

Price inquiry: +48 605999769, kontakt@openmedis.pl

Product code: SM01839



This unique training phantom allows training of ultrasonic detection of DTI (deep tissue injury). The phantom has two replaceable pads in two locations where DTI typically occurs easily. One pad represents the sacral region, the other the greater trochanter region

The phantom has 5 different pads for each of the two regions:

- Healthy tissue – no defect
- Mild bed sore – edema and hypoechoic area
- Moderate bed sore – edema and abscess
- Severe bed sore – edema and cobblestone-type abscess
- Pocket-type bed sore – tissue wound and pocket formation

Observing features such as loss of superficial fascia, localized areas of low brightness, and the location and depth of abnormal findings make it possible to confirm mild bed sore at category/stage I to II. Of course the model can also be used for visual classification of decubitus ulcer as well. Standard classification and treatment practice can be practiced and inserts can be used for teaching different stages.

Supplied in storage case.

Pressure Ulcer / Bedsore Models

Price inquiry: +48 605999769, kontakt@openmedis.pl

Product code: SM01812



Pressure ulcers, also known as bedsores or decubitus wounds, affect over one million adults every year. The wounds can range from superficial and mildly red on the skin surface to an extremely infected, deep, open wound penetrating down to the bone with blackened or dead tissue. These models illustrate all four wound stages and are used to give instruction on the care and cleaning of the ulcers.

The four stages include:

- Stage 1 — Reddening, unbroken skin
- Stage 2 — Open wound that is reddened with partial skin loss
- Stage 3 — Deep, open wound that reaches through all layers of skin and into the muscle
- Stage 4 — Severe, deep, open wound that reaches through all layers of skin and damages muscle, bone, tendons, and joints

The Pressure Ulcer/Bedsore Models are made with our lifelike skin. Includes four buttocks models representing each stage, four display easels, and instruction key card.

Size: 16.5 x 15.9 x 2.5 cm, Weight: 3.6 kg

Pat Pressure Injury Model

Price inquiry: +48 605999769, kontakt@openmedis.pl

Product code: SM03879



A unique, compact, comprehensive and realistic model displaying the following pressure injuries: an unstageable eschar/slough wound, Stage 1 (in both darkly and lightly pigmented skin), Stage 2, Stage 3 with undermining, tunneling and slough, a shallow Stage 4 over the malleolus with exposed bone and tendon, and a Stage 4 with exposed bone, tendon, muscle and undermining, tunneling, eschar and slough. The darkly pigmented skin section shows how different a Stage 1, blood blister and suspected DTI (Deep Tissue Injury) may appear depending on the pigmentation. Optional carry case available.

Size: 21 x 32 x 4.5 cm, weight: 1.5 kg

Decubitus ulcer model in the sacrum area, untreated

Price inquiry: +48 605999769, kontakt@openmedis.pl

Product code: SM02001



A realistic model of an untreated decubitus wound located in the sacral area. Current necrotic tissue and anal folds. The model is made of flexible material that adapts perfectly to the adjacent surface. It can be placed on both students and mannequins. Supplied with a case.

Decubitus ulcer model in the sacrum area, cleaned

Price inquiry: +48 605999769, kontakt@openmedis.pl

Product code: SM02002



A realistic model of a decubitus wound after surgical cleansing of necrotic tissue located in the sacral area. The borders of the wound and anal folds are visible. The model is made of flexible material that adapts perfectly to the adjacent surface. It can be placed on both students and mannequins. Can be used for demonstration of vacuum therapy. Available in two variants - as a bedsore freshly cleaned or with exudate. Supplied with a box.

Wound moulage sacral decubitus, cleaned including stand

Price inquiry: +48 605999769, kontakt@openmedis.pl

Product code: SM02967



This moulage shows the sacral area with a pressure ulcer after a surgical cleaning. The necrotic tissue has been removed, wound pockets are present.

Additional information:

- The wound is available either freshly cleaned or with wound exsudate.
- The moulage can be used for demonstration of vacuum wound therapy.
- The moulage adheres on simulated patients or manikins, it can be fixed with special skin glue for longer training sessions.
- The anal fold is represented to demonstrate the typical challenges when dressing the wound.
- The moulage is delivered in a holder and can also be removed.

Wound Foot

Price inquiry: +48 605999769, kontakt@openmedis.pl

Product code: SM01813



Moulded from a real foot for a true-life experience when assessing the various wounds. Twenty different conditions are presented so you can see and understand how they are different. Great care has been taken to colour each wound just as you would see it on a patient. Once the different etiologies are understood, you can discuss and devise treatment plans that will deliver optimized patient care. The following wounds and abnormalities are included: pressure ulcers, deep tissue injury, callus, amputated toe, gangrene, maceration, partial thickness wounds, corn, ingrown toenail, blister, hammer toes, and skin stapled wound. Comes with positioning base for "hands free" access to all the sites when applying dressings or teaching.

Size: 32 x 20 x 9 cm

Elderly Pressure Ulcer Foot

Price inquiry: +48 605999769, kontakt@openmedis.pl

Product code: SM03878



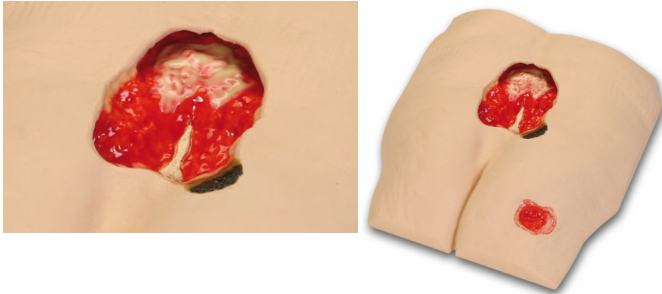
Chronic foot ulcers affect elderly the most, we have designed the Elderly Pressure Ulcer Foot for instruction on care and cleaning of pressure ulcers in various stages. Pressure ulcers are more likely to appear over pressure points such as heels, tips of toes, between toes, or anywhere the bones may protrude and rub against socks, shoes, or bed sheets.

This replica contains all four severity stages: - Stage I: Located on the bottom of the toe. Surface of the skin is red. - Stage II: Located on the bottom of the foot just under the toe. Surface of the skin is red and deeper into the skin layers. - Stage III: Located on the side of the foot. Surface of the skin is red, looks more like a crater, and reaches the bottom layer of the skin. - Stage IV: Located on the heel of the foot. Surface of the skin is red. A great amount of tissue has been damaged, including muscle, bone, joints, and tendons.

Pressure Ulcer Model

Price inquiry: +48 605999769, kontakt@openmedis.pl

Product code: SM01814



Designed for teaching and training with vacuum assisted closure and negative pressure wound therapy devices, this model features a large sacral Stage IV pressure ulcer, with eschar, subcutaneous fat, undermining, tunneling, slough, eschar and exposed bone (with osteomyelitis) and a Stage III pressure ulcer with subcutaneous fat and granulation tissue. The large size and depth of the Stage IV pressure ulcer, as well as the undermining and tunneling, make it ideal for practicing the proper dressing and preparation of a large wound for use with a negative pressure wound therapy device. The Stage III pressure ulcer is positioned so that the Stage IV can be dressed by itself or a "bridging" dressing can be applied to the Stage IV and Stage III to demonstrate and practice this skill.

Size: 23 x 23 x 11.5 cm, weight: 1 kg

Edema foot with deep tissue injury for GERI/KERI

Price inquiry: +48 605999769, kontakt@openmedis.pl

Product code: SM02268

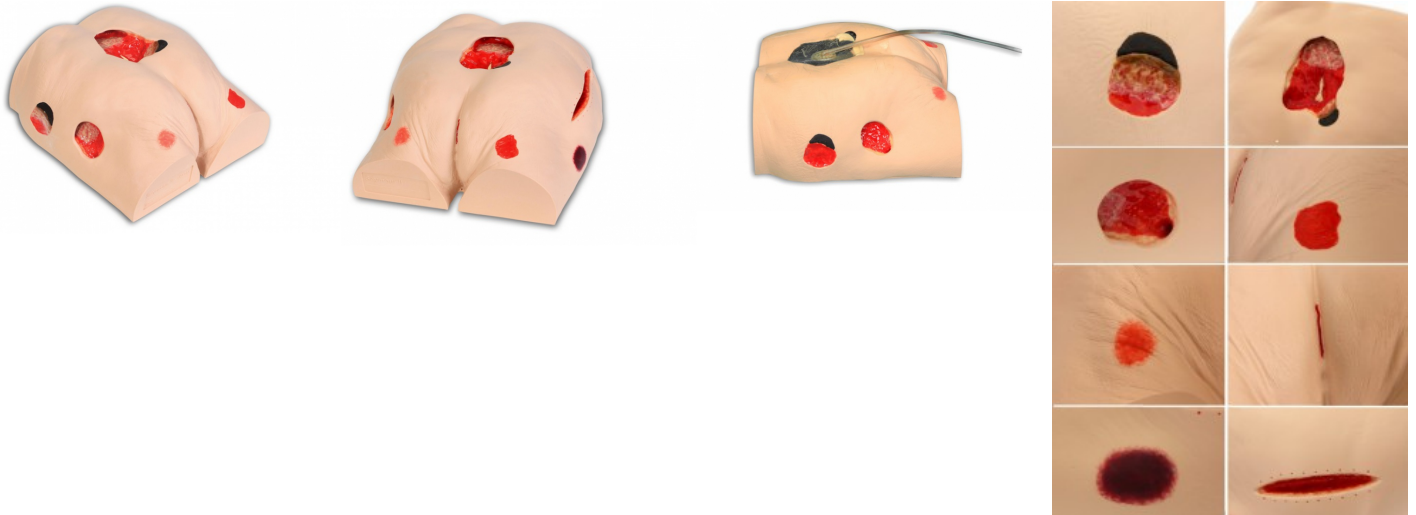


This foot comes with five edema inserts which react to pressure in a different way, depending on the stage of edema. Additionally the foot shows a deep tissue injury on the heel. It can be easily attached to the leg of your KERI/GERI manikin.

Seymour II Dekubitus-Simulator

Price inquiry: +48 605999769, kontakt@openmedis.pl

Product code: SM01815



This new, improved version of the approved Decubitus-Simulator is made of even more realistic material and is perfect for dressing practice. The model was molded from a 74-year-old patient and shows the following pressure ulcers: Stage I, stage II, stage III and Stage IV. It also shows a suspected deep tissue injury (DTI), a unstageable eschar/slough wound and a 14 cm dehiscent wound. Life size. Optional carrying bag available.