



Complete Ostomy Care Simulator

Price inquiry: +48 605999769, kontakt@openmedis.pl

Product code: SM01987



The Complete Ostomy Care Simulator is ideal for demonstration and practice of ostomy care procedures. The anatomy of the ostomies are carefully reproduced to provide lifelike functions and appearance. The skin is made of realistic, flesh-like material, and a soft, pliable material is used for the stomas in order to achieve the most realistic tactile sensation. Dilation of the stomas can be demonstrated and practiced, along with application of postoperative and permanent ostomy bags. Practice fitting, cleaning, and changing the pouching system. The simulator consists of three locations to place the interchangeable stomas (healthy stoma, double barrel stoma, prolapsed stoma, and necrotic stoma). The healthy and necrotic stomas can be irrigated and simulated stool can be pumped to provide drainage and excretion at the ostomy. There is a permanent, retracted stoma to practice ostomy care procedures on stomas sunk below skin level.

Includes simulator, four stomas, simulated stools, adult ostomy bag, lubricant, syringe with tubing, base, gloves, and infected tissue roll.

Size: 35.5 x 30.5 x 10 cm, Weight 4.6 kg

Wound Moulage Ileostoma

Price inquiry: +48 605999769, kontakt@openmedis.pl

Product code: SM02962



This moulage shows an **ileostomy**, the second most common type of ostomy. The terminal ileostoma is usually found on the right side of the body and shows the small intestine sewn in above skin level.

Additional information:

- Due to the use of a special plastic compound, all common stoma bags adhere to the moulage.
- The model is suitable for sizing using a stoma template, cleaning the skin with water and attaching the base plate and stoma bag.
- The moulage is in a holder and can also be removed.

Wound Moulage Colostoma under skin level, incl. stand

Price inquiry: +48 605999769, kontakt@openmedis.pl

Product code: SM02966



This moulage shows a colostomy under skin level, the most common type of stoma creation. The terminal colostoma is usually found in the middle of the body or on the left side of the body and shows the colon sewn in above skin level.

Additional information:

- Due to the use of a special plastic compound, all common stoma bags adhere to the moulage.
- The model is suitable for sizing using the stoma template, cleaning the skin with water and attaching the base plate and stoma bag.
- The moulage is in a holder and can also be removed.

Wound Moulage Colostoma in abdominal crease, incl. stand

Price inquiry: +48 605999769, kontakt@openmedis.pl

Product code: SM02965



This moulage shows a colostomy in abdominal crease, the most common type of stoma creation. The terminal colostoma is usually found in the middle of the body or on the left side of the body and shows the colon sewn in above skin level.

Additional information:

- Due to the use of a special plastic compound, all common stoma bags adhere to the moulage.
- The model is suitable for sizing using the stoma template, cleaning the skin with water and attaching the base plate and stoma bag.
- The moulage is in a holder and can also be removed.

Wound Moulage Colostoma with inflammation, incl. stand

Price inquiry: +48 605999769, kontakt@openmedis.pl

Product code: SM02964



This moulage shows a colostomy with inflammation, the most common type of stoma creation. The terminal colostoma is usually found in the middle of the body or on the left side of the body and shows the colon sewn in above skin level.

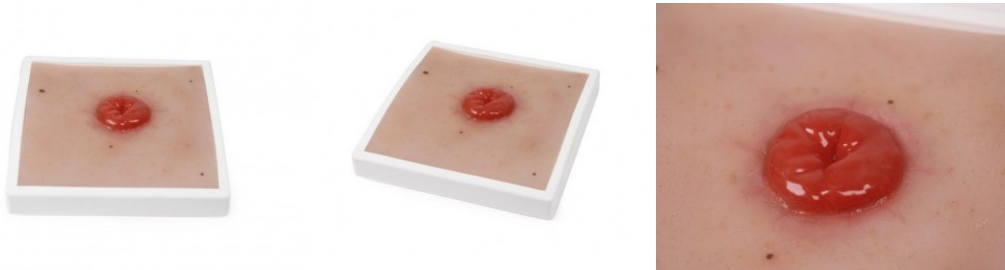
Additional information:

- Due to the use of a special plastic compound, all common stoma bags adhere to the moulage.
- The model is suitable for sizing using the stoma template, cleaning the skin with water and attaching the base plate and stoma bag.
- The moulage is in a holder and can also be removed.

Wound Moulage Colostoma, incl. stand

Price inquiry: +48 605999769, kontakt@openmedis.pl

Product code: SM02963



This moulage shows a **colostomy**, the most common type of stoma creation. The terminal colostoma is usually found in the middle of the body or on the left side of the body and shows the colon sewn in above skin level.

Additional information:

- Due to the use of a special plastic compound, all common stoma bags adhere to the moulage.
- The model is suitable for sizing using the stoma template, cleaning the skin with water and attaching the base plate and stoma bag.
- The moulage is in a holder and can also be removed.

Infant Ostomy Trainer

Price inquiry: +48 605999769, kontakt@openmedis.pl

Product code: SM01913

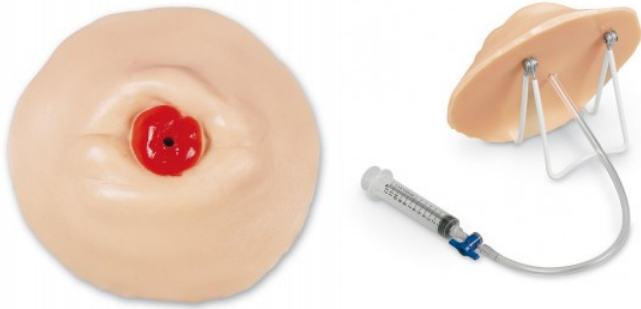


Caring for a baby with an ostomy may feel overwhelming. The Infant Ostomy Trainer has been created to educate caregivers and parents on how to give special care to an infant with a stoma. This trainer will help by teaching step-by-step procedures for cleaning and caring for a baby's stoma and changing the pouching system. The anatomy of the colostomies were carefully reproduced to provide lifelike appearance and functions. A soft, pliable material is used for the stomas in order to achieve the most realistic tactile sensation. The syringes included are used to inject simulated stool through ports to the colostomy sites. Consistency of the simulated stool can be thinned by adding water. The colostomy sites can also be irrigated. The simulated stool may be reused.

Retracted Ostomy Care Training Model

Price inquiry: +48 605999769, kontakt@openmedis.pl

Product code: SM01988



Designed to help introduce the essentials of ostomy care to patients and students, this model is ideal for demonstration and practice of ostomy care procedures on a stoma that has sunk below skin level, including cleaning and changing the pouching system. The anatomy of the ostomy is carefully reproduced to provide lifelike functions and appearance. A soft, pliable material is used for the stoma in order to achieve the most realistic tactile sensation. Dilation of the stomas can be demonstrated and practiced, along with application of postoperative and permanent ostomy bags on stomas that can often be difficult to obtain a good seal around. The ostomy can actually be irrigated. Syringe

is included to pump simulated stool through the unit to provide drainage and excretion at the ostomy. The consistency of the stool can be varied by using water to thin the material.

Includes model, display easel, syringe, simulated stool, lubricant, and instruction manual.

Size: 18 x 8 cm, Weight 1.6 kg

Ostomy Care Model

Price inquiry: +48 605999769, kontakt@openmedis.pl

Product code: SM02986



This model contains **four stomas** that can be lubricated and dilated with an inserted finger. Model may be washed, taped, bandaged or fitted with ostomy bags. Supplied with lubricant.

Ostomy Care Trainer

Price inquiry: +48 605999769, kontakt@openmedis.pl

Product code: SM01984



This model contains four stomas that can be lubricated and dilated with an inserted finger. This model contains four stomas that can be lubricated and dilated with an inserted finger. Model may be washed, taped, bandaged and The ileostomy can be used to illustrate how to fit a pouch, and all four stomas can be irrigated with a catheter, washed, and bandaged. Comes with lubricant, draping sheet, and carrying case that measures 31 cm x 23 cm x 13 cm.

Stoma Trainer

Price inquiry: +48 605999769, kontakt@openmedis.pl

Product code: SM01914



The Ostomy Pouching Trainer helps prepare patients, their families, and healthcare professionals for this life-changing event, improving their initial exposure and their future quality of life. The Ostomy Pouching Trainer will facilitate the practice of proper pouching techniques to maintain healthy skin while developing good hand-eye coordination. Pre-operative teaching allows patients and their families to begin learning about ostomies prior to surgery when they are less distracted - reducing anxiety.

They can practice using four different stomas:

- Urostomy with Stents
- Loop Stoma (you provide the bridge)
- End Stoma
- Flush Stoma

With the Ostomy Pouching Trainer, each of these stomas can have simulated stool or urine output and can be placed in four different locations:

- Contact dermatitis
- Standard healthy skin
- Flush placement with folds and mucocutaneous separation
- Candidiasis

Patients and healthcare staff can grasp, in a realistic, life-sized model, what they may have had difficulty understanding from pictures, especially in those cases where language or comprehension may be an obstacle. Seeing the stomas and visualizing the location and function of the various types, including the discharge from them, is essential to learning. Proper teaching helps increase patients' understanding of their condition and the adjustments which may be necessary for achieving a satisfactory standard of life with their new stoma.



An advanced model of excretory stomas with a set of replaceable stomas.

Price inquiry: +48 605999769, kontakt@openmedis.pl

Product code: SM01989



Advanced stoma care simulator

Price inquiry: +48 605999769, kontakt@openmedis.pl

Product code: SM01985



Reproduction of an abdomen showing the anatomy of both a colostomy and ileostomy to provide lifelike functions and appearance. Dilation of the stomas can be demonstrated and practiced, along with application of postoperative and permanent ostomy bags. The colostomy can be irrigated. Drainage and excretion at the ileostomy (water) and colostomy (simulated stool) can be pumped by syringes. Delivered with simulated stool and carrying case.

Size: 45.5 x 45.5 x 30.5 cm, weight: 11 kg



Ostomy Care Training Models Set

Price inquiry: +48 605999769, kontakt@openmedis.pl

Product code: SM01986



Includes 5 independent Ostomy Care Training Models: Nonfunctioning Double Barrel Ostomy Care Training Model, Nonfunctioning Prolapsed Ostomy Care Training Model, Functioning Healthy Ostomy Care Training Model, Functioning Infected Ostomy Care Training Model, and Functioning Necrotic Ostomy Care Training Model. Designed to help introduce the essentials of ostomy care to patients and students, these units are ideal for demonstration and practice of ostomy care procedures. The anatomy of the ostomies is carefully reproduced to provide lifelike functions and appearance. A soft, pliable material is used for the stomas in order to achieve the most realistic tactile sensation. Dilation of the stomas can be demonstrated and practiced, along with application of postoperative and permanent ostomy bags. Both functioning and nonfunctioning models are included.