

"Senior" head cover for nursing dolls

Price inquiry: +48 605999769, kontakt@openmedis.pl

Product code: SM02912



This **head cover** can simply be pulled over the head of the Standard, Basic, Clinical Chloe or the extended Clinical Chloe nursing doll and transforms the normal nursing doll into a doll with a **geriatric appearance**.

Additional information:

- The soft skin looks lifelike and feels realistic.
- The mouth, nose, ears and tracheostomy opening are accessible so that the doll's functions are fully preserved.
- The mask has a zipper on the back of the head so that it can be attached and removed without much effort.

KERi nursing care doll

Price inquiry: +48 605999769, kontakt@openmedis.pl

Product code: SM02267



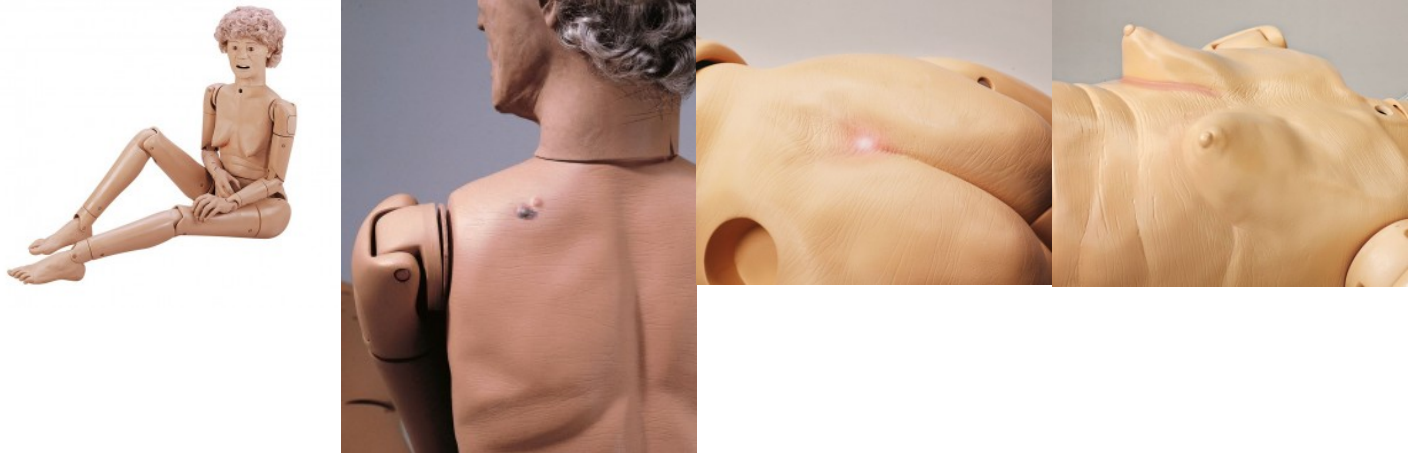
Product information: KERi nursing care doll This highly realistic care doll finds its uses specifically in nursing care. This doll is characterised particularly by the very high mobility and the extremely true to life imitation of the face, hands and feet. **This model offers the following equipment and practising possibilities:**

- Male and female bladder catheterisation
- Prostatic examination (stage B)
- Stoma care (ileostomy and colostomy)
- Tracheostomy care (rinsing and aspiration)
- Percutaneous Endoscopic Gastroscopy PEG care
- Changing dentures (upper and lower mandible)
- Administration of drugs to the eye
- Body care, hair care, positioning methods
- Enema care (female), oral and nasal douches
- I.m. injection (4 injection sites), oral hygiene
- Syringing of the ears, insertion of hearing aids
- Bandages on fingers and toes (mobile and individually shaped)
- Care of lesions, bandaging practice, pressure sore care

GERi geriatric care doll

Price inquiry: +48 605999769, kontakt@openmedis.pl

Product code: SM02265



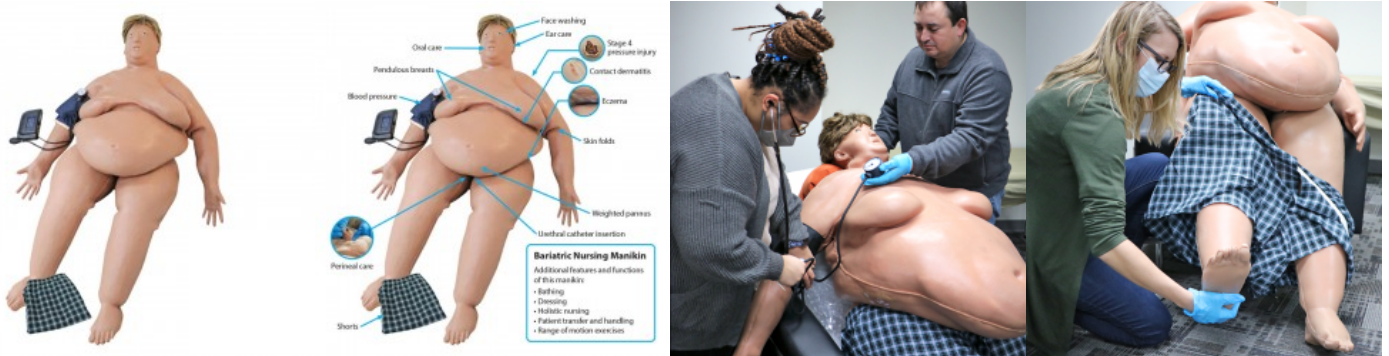
Product information: GERi geriatric care doll With this special model, geriatric training acquires particularly high esteem. It presents itself as the ideal aid to teachers of geriatric care, who can practise all the relevant measures realistically using this model. The outer aspect of this special care doll is an impressive imitation of the appearance of an elderly person. Lesions specifically reproduced on the body, such as, for example, liver spots (normal and pathological), skin inflammation under the female breast and a pressure sore complete the appearance and further increase the didactic value of the model. **The following care measures can be practised:**

- Male and female bladder catheterisation- Prostatic examination (stage B)
- Stoma care (ileostomy and colostomy)
- Tracheostomy care (rinsing and aspiration)
- Percutaneous Endoscopic Gastroscopy PEG care
- Changing dentures (upper and lower mandible)
- Administration of drugs to the eye
- Body care, hair care, positioning methods
- Enema care (female), oral and nasal douches
- I.m. injection (4 injection sites), oral hygiene
- Syringing of the ears, insertion of hearing aids
- Bandages on fingers and toes (mobile and individually shaped)
- Care of lesions, bandaging practice, pressure sore care

Bariatric Nursing Manikin

Price inquiry: +48 605999769, kontakt@openmedis.pl

Product code: SM03100



Bariatric Nursing Manikin, which represents a 350-pound male. Use this realistic form to help students prepare for the unique challenges associated with bariatric or obese patients, such as range of motion exercises, ambulation, perineal care and patient transfer and lifting. Pressure injury identification, skin assessment, blood pressure reading and basic patient care skills can also be practiced.

Contents:

- Bariatric Nursing Manikin
- Blood Pressure Simulator
- Wig
- Shorts
- Skin conditions: Pressure injury, eczema and contact dermatitis
- Downloadable curriculum
- 1-year limited warranty

Features:

- Bathing
- Blood pressure
- Dressing
- Ear care
- Face washing
- Holistic nursing
- Oral care
- Patient transfer and handling
- Pendulous breasts
- Perineal care
- Pressure ulcer care and cleaning
- Range of motion exercises
- Skin folds
- Soft, realistic skin texture
- Urethral catheter insertion
- Weighted pannus
- Articulating limbs
- Can be used with common bariatric lifts

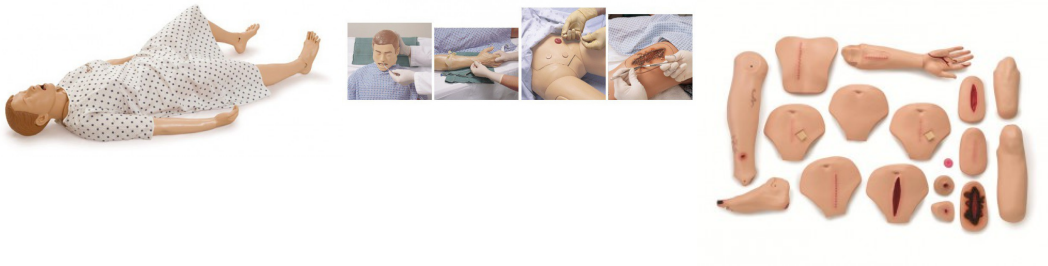




Nursing Manikin, Nursing Kelly, Simpad compatible

Price inquiry: +48 605999769, kontakt@openmedis.pl

Product code: SM01861



The manikin for the training of skills for in-hospital professionals. Nursing Kelly is a full-body, lifelike manikin designed to teach all skills from basic patient handling to advanced nursing, including the measurement of noninvasive blood pressure and the auscultation and recognition of normal and abnormal heart, lung and bowel sounds.

Set Includes:

- Adult, Full-body Male Manikin
- Multi-Venous IV Training Arm
- Blood Pressure Training Arm
- Hospital Gown
- Manikin Lubricant
- Assembly Tool Kit



Clinical Chloe Patient Care Simulator

Price inquiry: +48 605999769, kontakt@openmedis.pl

Product code: SM03824



Sophisticated simulators for training in clinical nursing procedures. A variety of exercises may be performed, from simple bandaging and general patient care to breast palpation, catheterization, ostomy management, injection training, and cervical examination.

Features include: - Articulating head, jaw, elbows, wrists, ankles, and knees - Bathing and bandaging activity - Bends and detaches at waist for easy storage - Breast palpation capability with one abnormal breast - Detachable and removable internal tanks - Enema administration capability - Full body - Instruction manual - Interchangeable male and female breast inserts - Interchangeable male and female organs - Intramuscular injection sites in arm, thighs, and buttock - Latch provides secure seal between ostomies and internal tanks - Nasal and oral tube placement - Neck brace - NG and OG tube feeding and gastric suction - Opening for gastrostomy - Realistic eyes for ophthalmic exercises - Realistic urethral passage and bladder for catheterization exercises - Simulated ear canal for otic drops and irrigation - Soft, realistic face skin, hands, feet, fingers, and toes - Stylish wig for hair care exercises and surgical draping - Tracheotomy placement - Transverse colostomy, ileostomy, and suprapubic stomas, to practice irrigation - Upper and lower dentures for oral hygiene - Vaginal douching and pap smear exercises with realistic vagina and cervix Weight: 21 kg

Nursing doll, Basic Version

Price inquiry: +48 605999769, kontakt@openmedis.pl

Product code: SM03825



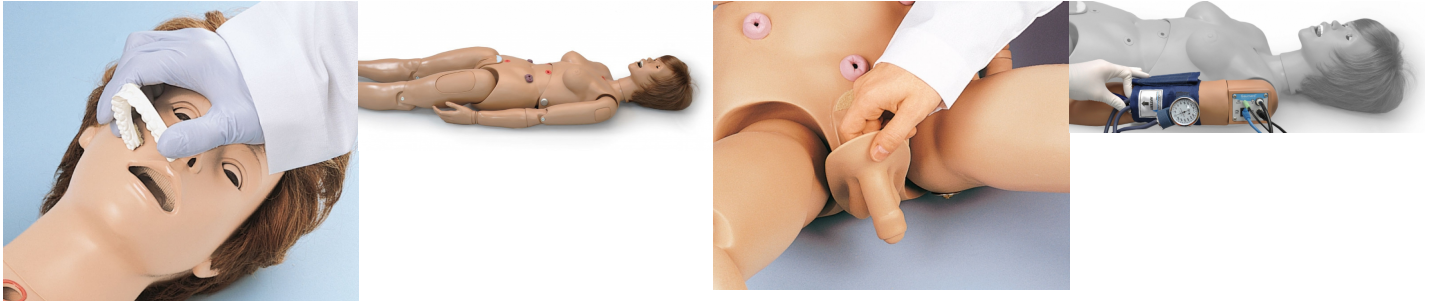
This version comes without internal tanks and without male genital. Made for training of basic nursing like positioning, washing exercises and dressing.

Weight: 16 kg

Nursing doll, standard version

Price inquiry: +48 605999769, kontakt@openmedis.pl

Product code: SM01458



This doll offers training in a variety of clinical procedures to nurses and other health care professionals. The external appearance of the model is female. Attachment of the male genitals, however, converts the manikin into a male model. It can simulate a number of exercises from transverse colostomy management to tracheotomy, from intramuscular injection to ophthalmological treatment.

It offers the following features:

- Douching and pap smear exercises
- Enema administration
- Head supplied with wig for combing, shampooing, and head draping exercises
- Injection site on buttock for intramuscular injection
- Injection sites on left and right arm for intramuscular and subcutaneous injections
- Instruction in complete intestinal lavage with stomas connected to internal reservoir system
- Instruction in gastrostomy, ileostomy, and transverse colostomy management
- Interchangeable male and female organs
- Male and female urinary catheterization
- Otic, nasal, tracheotomy, and gastrostomy openings and connections for ear syringing, gastric suction, and tracheotomy exercises
- Removable dentures
- Separated fingers and toes for bandaging exercises
- Separately inserted eyes for administration of orbital medications, removal of foreign bodies, and eye irrigation
- Suprapubic stoma management and drainage

The joints are strong and movements lifelike, even to the extent of permitting pronation and supination of the forearm. Made from the highest quality vinyl plastic with a high degree of resistance to wear and tear. The surface is smooth, impervious to water, oils, and liniments.

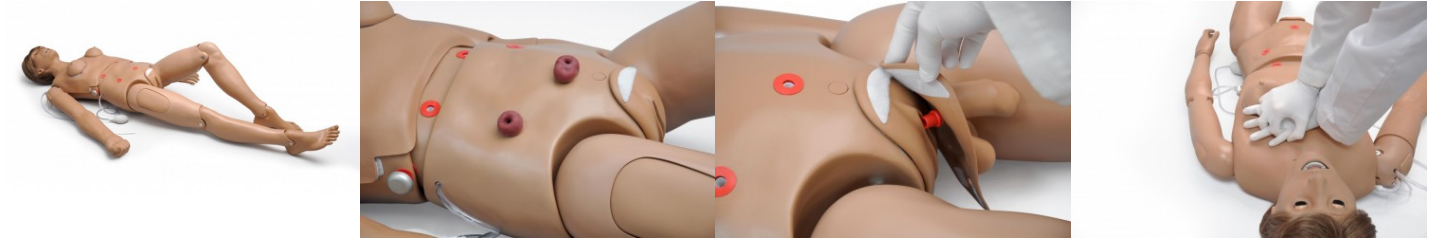
Weight: 16 kg, size: ca. 1.60 m



Advanced Clinical Chloe Nursing Doll

Price inquiry: +48 605999769, kontakt@openmedis.pl

Product code: SM03822



Take your nursing education to a new level! With this exercise model you can view and record compressions and ventilation using the Omni Code Blue Pack that can be connected to any computer for CPR evaluation and recording (computer and monitor not included).

General nursing: - Bathing and bandage exercises - Full body - Interchangeable male and female genital organs included - Realistic eyes for exercises such as eye dropping - One pupil is dilated - Eyes can be opened and closed - Realistic urinary tract for bladder catheterization - Dentition (upper and lower jaw) for oral hygiene - Soft, realistic skin on face, hands, feet, fingers and toes - Simulated ear canal for ear drops and irrigation - Colostoma on the transverse intestine, ileostomy, suprapubic stomata for douching - Gastrostomy opening (PEG) - Enema reservoir - Wig for hair care and for practicing the surgical cover - Set with two pressure ulcers - Foot with ulcer optional, please order separately - Manual palpable pulse Breast palpation: - Interchangeable female and male breast inserts - Possibility of breast palpation with an abnormal breast CPR: - Practice possibility CPR - Mask- bag ventilation with realistic breast lift - Realistic heart, lungs, ribs, stomach and liver for unmatched CPR Performance - Omni Code Blue Pack included for monitoring compression and ventilation Airway management: - Anatomically correct airways - Tracheotomy opening - Tracheotomy with interchangeable trachea - Trachea, bronchi and lungs allow learning airway management skills - Tongue, epiglottis, vocal cords and esophagus have realistic appearance and haptics - Nasal and oral intubation - Naso- and orogastric probe placement Moving body parts: - Head - Jaw - Elbow - Wrists - Knee - Ankle Injection training: - Intramuscular Injection sites in arms, thighs and buttocks - Extended injection arm R17600B included GYN Training: - Vaginal irrigation and Pap smear exercise with realistic vagina and cervix Other: - Removable inner reservoirs - Movable and dismountable at the waist for easy storage - Secure locking of stomata and internal reservoirs - Carrying bag - User manual (English) - Neck brace **Blood pressure measuring arm optionally available Weight: 36.3 kg**