

## "Senior" head cover for nursing dolls

**Price inquiry:** +48 605999769, [kontakt@openmedis.pl](mailto:kontakt@openmedis.pl)

Product code: SM02912



This **head cover** can simply be pulled over the head of the Standard, Basic, Clinical Chloe or the extended Clinical Chloe nursing doll and transforms the normal nursing doll into a doll with a **geriatric appearance**.

Additional information:

- The soft skin looks lifelike and feels realistic.
- The mouth, nose, ears and tracheostomy opening are accessible so that the doll's functions are fully preserved.
- The mask has a zipper on the back of the head so that it can be attached and removed without much effort.

## Training phantom for ultrasonic detection of tissue damage

**Price inquiry:** +48 605999769, [kontakt@openmedis.pl](mailto:kontakt@openmedis.pl)

Product code: SM01839



This unique training phantom allows training of ultrasonic detection of DTI (deep tissue injury). The phantom has two replaceable pads in two locations where DTI typically occurs easily. One pad represents the sacral region, the other the greater trochanter region

### **The phantom has 5 different pads for each of the two regions:**

- Healthy tissue – no defect
- Mild bed sore – edema and hypoechoic area
- Moderate bed sore – edema and abscess
- Severe bed sore – edema and cobblestone-type abscess
- Pocket-type bed sore – tissue wound and pocket formation

Observing features such as loss of superficial fascia, localized areas of low brightness, and the location and depth of abnormal findings make it possible to confirm mild bed sore at category/stage I to II. Of course the model can also be used for visual classification of decubitus ulcer as well. Standard classification and treatment practice can be practiced and inserts can be used for teaching different stages.

Supplied in storage case.

## KERi nursing care doll

**Price inquiry:** +48 605999769, [kontakt@openmedis.pl](mailto:kontakt@openmedis.pl)

Product code: SM02267



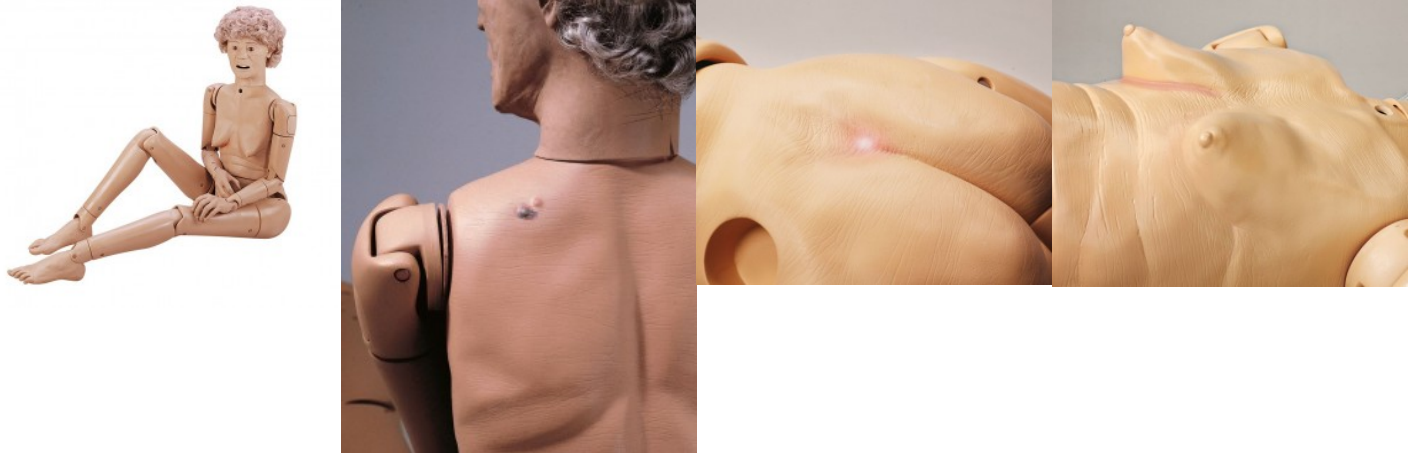
**Product information: KERi nursing care doll** This highly realistic care doll finds its uses specifically in nursing care. This doll is characterised particularly by the very high mobility and the extremely true to life imitation of the face, hands and feet. **This model offers the following equipment and practising possibilities:**

- Male and female bladder catheterisation
- Prostatic examination (stage B)
- Stoma care (ileostomy and colostomy)
- Tracheostomy care (rinsing and aspiration)
- Percutaneous Endoscopic Gastroscopy PEG care
- Changing dentures (upper and lower mandible)
- Administration of drugs to the eye
- Body care, hair care, positioning methods
- Enema care (female), oral and nasal douches
- I.m. injection (4 injection sites), oral hygiene
- Syringing of the ears, insertion of hearing aids
- Bandages on fingers and toes (mobile and individually shaped)
- Care of lesions, bandaging practice, pressure sore care

## GERi geriatric care doll

**Price inquiry:** +48 605999769, [kontakt@openmedis.pl](mailto:kontakt@openmedis.pl)

Product code: SM02265



**Product information: GERi geriatric care doll** With this special model, geriatric training acquires particularly high esteem. It presents itself as the ideal aid to teachers of geriatric care, who can practise all the relevant measures realistically using this model. The outer aspect of this special care doll is an impressive imitation of the appearance of an elderly person. Lesions specifically reproduced on the body, such as, for example, liver spots (normal and pathological), skin inflammation under the female breast and a pressure sore complete the appearance and further increase the didactic value of the model. **The following care measures can be practised:**

- Male and female bladder catheterisation- Prostatic examination (stage B)
- Stoma care (ileostomy and colostomy)
- Tracheostomy care (rinsing and aspiration)
- Percutaneous Endoscopic Gastroscopy PEG care
- Changing dentures (upper and lower mandible)
- Administration of drugs to the eye
- Body care, hair care, positioning methods
- Enema care (female), oral and nasal douches
- I.m. injection (4 injection sites), oral hygiene
- Syringing of the ears, insertion of hearing aids
- Bandages on fingers and toes (mobile and individually shaped)
- Care of lesions, bandaging practice, pressure sore care

## Neonate doll for Physiotherapy

**Price inquiry:** +48 605999769, [kontakt@openmedis.pl](mailto:kontakt@openmedis.pl)

Product code: SM01538



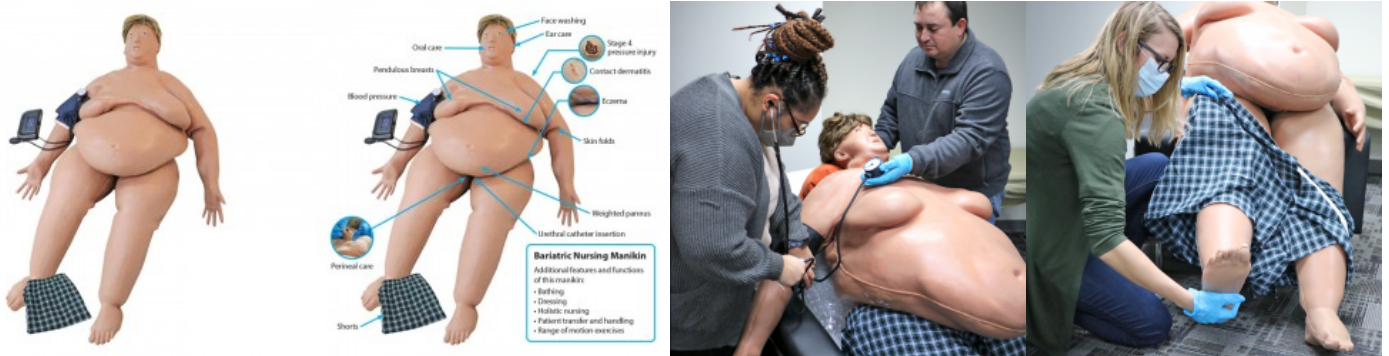
For the special needs of physiotherapists this doll is manufactured with a cloth body to allow all kind of movements. This model is perfect to instruct parents how to do Vojta or Bobath exercises.

Size: 48 cm, weight: 0.7 kg

## Bariatric Nursing Manikin

**Price inquiry:** +48 605999769, kontakt@openmedis.pl

Product code: SM03100



**Bariatric Nursing Manikin, which represents a 350-pound male.** Use this realistic form to help students prepare for the unique challenges associated with bariatric or obese patients, such as range of motion exercises, ambulation, perineal care and patient transfer and lifting. Pressure injury identification, skin assessment, blood pressure reading and basic patient care skills can also be practiced.

### Contents:

- Bariatric Nursing Manikin
- Blood Pressure Simulator
- Wig
- Shorts
- Skin conditions: Pressure injury, eczema and contact dermatitis
- Downloadable curriculum
- 1-year limited warranty

### Features:

- Bathing
- Blood pressure
- Dressing
- Ear care
- Face washing
- Holistic nursing
- Oral care
- Patient transfer and handling
- Pendulous breasts
- Perineal care
- Pressure ulcer care and cleaning
- Range of motion exercises
- Skin folds
- Soft, realistic skin texture
- Urethral catheter insertion
- Weighted pannus
- Articulating limbs
- Can be used with common bariatric lifts

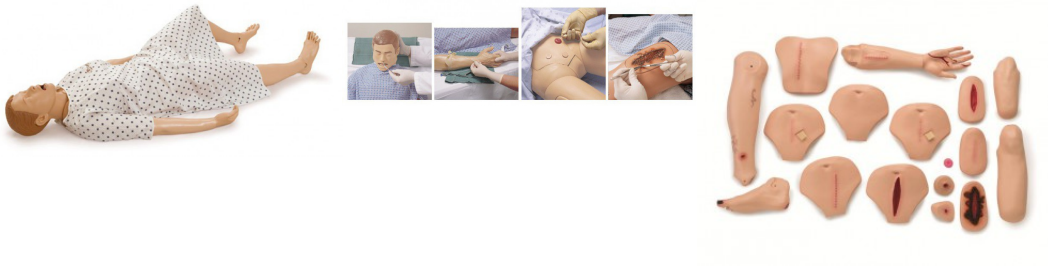




## **Nursing Manikin, Nursing Kelly, Simpad compatible**

**Price inquiry:** +48 605999769, [kontakt@openmedis.pl](mailto:kontakt@openmedis.pl)

Product code: SM01861



The manikin for the training of skills for in-hospital professionals. Nursing Kelly is a full-body, lifelike manikin designed to teach all skills from basic patient handling to advanced nursing, including the measurement of noninvasive blood pressure and the auscultation and recognition of normal and abnormal heart, lung and bowel sounds.

### **Set Includes:**

- Adult, Full-body Male Manikin
- Multi-Venous IV Training Arm
- Blood Pressure Training Arm
- Hospital Gown
- Manikin Lubricant
- Assembly Tool Kit



## Parent Education Baby, boy

**Price inquiry:** +48 605999769, [kontakt@openmedis.pl](mailto:kontakt@openmedis.pl)

Product code: SM01856



This Newborn baby doll can be used for nappy practice and baby care courses for parents. The movable doll can be used for holding and carrying practice, practice of navel care, skin care and nappy practice. The model weighs approx. 1.1 kg, but feels a little heavier because of missing body tension in comparison with a real baby. It has a slightly open mouth and can be used for breastfeeding practice. A stump of the umbilical cord is present to allow navel care practice. Skin folds allow training of proper body hygiene. Head, arms and legs are movable.

Size: approx. 50 cm, weight: 1.1 kg  
Male version.

## Parent Education Baby, female

**Price inquiry:** +48 605999769, [kontakt@openmedis.pl](mailto:kontakt@openmedis.pl)

Product code: SM01536



This Newborn baby doll can be used for nappy practice and baby care courses for parents. The movable doll can be used for holding and carrying practice, practice of navel care, skin care and nappy practice. The model weighs approx. 1.1 kg, but feels a little heavier because of missing body tension in comparison with a real baby. It has a slightly open mouth and can be used for breastfeeding practice. A stump of the umbilical cord is present to allow navel care practice. Skin folds allow training of proper body hygiene. Head, arms and legs are movable.

Size: approx. 50 cm, weight: 1.1 kg

Female version.

Head circumference: 39 cm

## Neonate doll for nappy practice, male

**Price inquiry:** +48 605999769, [kontakt@openmedis.pl](mailto:kontakt@openmedis.pl)

Product code: SM01535



This model of a neonate is a true to life replica, but nevertheless highly economically priced. It is therefore eminently suited to group training (bathing and nappy practice). Mobile joints allow all the main exercises in infant care.

Size: 50 cm, weight: 1.2 kg  
Male version.



## **Premature Infant Model, 24 week old boy**

**Price inquiry:** +48 605999769, [kontakt@openmedis.pl](mailto:kontakt@openmedis.pl)

Product code: SM01860



The ideal model for practicing how to care for premature infants. Developed for training in incubator care. Suitable for practicing washing, cleaning, and feeding, as well as aspiration and other procedures involving equipment. The front fontanel is palpable. Model of a 30 week old boy.

Size: 34 cm, circumference of head: 25 cm, weight: 0,7kg



## **Premature Infant Model, 30 week old boy**

**Price inquiry:** +48 605999769, [kontakt@openmedis.pl](mailto:kontakt@openmedis.pl)

Product code: SM01859



The ideal model for practicing how to care for premature infants. Developed for training in incubator care. Suitable for practicing washing, cleaning, and feeding, as well as aspiration and other procedures involving equipment. The front fontanel is palpable. Model of a 30 week old boy.

Size: 39 cm, circumference of head: 29 cm, weight: 1.6 kg



## Complete Ostomy Care Simulator

**Price inquiry:** +48 605999769, [kontakt@openmedis.pl](mailto:kontakt@openmedis.pl)

Product code: SM01987



The Complete Ostomy Care Simulator is ideal for demonstration and practice of ostomy care procedures. The anatomy of the ostomies are carefully reproduced to provide lifelike functions and appearance. The skin is made of realistic, flesh-like material, and a soft, pliable material is used for the stomas in order to achieve the most realistic tactile sensation. Dilation of the stomas can be demonstrated and practiced, along with application of postoperative and permanent ostomy bags. Practice fitting, cleaning, and changing the pouching system. The simulator consists of three locations to place the interchangeable stomas (healthy stoma, double barrel stoma, prolapsed stoma, and necrotic stoma). The healthy and necrotic stomas can be irrigated and simulated stool can be pumped to provide drainage and excretion at the ostomy. There is a permanent, retracted stoma to practice ostomy care procedures on stomas sunk below skin level.

Includes simulator, four stomas, simulated stools, adult ostomy bag, lubricant, syringe with tubing, base, gloves, and infected tissue roll.

Size: 35.5 x 30.5 x 10 cm, Weight 4.6 kg

## Foster Doll Newborn

**Price inquiry:** +48 605999769, [kontakt@openmedis.pl](mailto:kontakt@openmedis.pl)

Product code: SM03821



Our newborn looks like a 0-8 week old baby. The round face and the fine, soft hands invite you to take it in your arms and take care of the new member of our foster doll family.

It has the following features/possibilities: - Soft, flexible facial skin - Modeled hair - Realistic eyes - Gastric tube exercises, feeding and suction - Simulated ear canal - Soft arms and legs with natural range of motion - Soft hands, feet, fingers and Toe, heel and finger berry puncture - Soft torso skin for "baby feeling" - Bath and bandage exercises - Intramuscular injection in the thigh - Interchangeable male genital system - Urethra and bladder - Male and female catheterization - Removable inner Reservoirs- Enema Exercises - T-Shirt and Diapers - Soft Carrying Bag - User Manual (English)

## Foster doll one-year-old child

**Price inquiry:** +48 605999769, [kontakt@openmedis.pl](mailto:kontakt@openmedis.pl)

Product code: SM03820



This care doll has the following features/possibilities: - Soft, childlike skin, modeled hair - Eyes open and close in realistic eye sockets - Movable head with lower jaw, teeth and tongue - Nose stomach tube, ear care - Rotatable at the hip, movable elbows and knees - Realistic hands, feet, fingers and toes - Soft upper body skin over firm body for realistic feeling - Dismountable at the hip for easy storage - Bath and bandage exercises - Intramuscular injection sites on the thighs - Interchangeable male sex organ - Male and female bladder catheterization - Tracheotomy Opening - Interchangeable Internal Reservoirs, Enema Exercises - Neck Support, T-Shirt, Shorts - Soft Carrying Bag, Instructions (English)



## Model - arterial leg ulcer, epithelization phase, large size

**Price inquiry:** +48 605999769, [kontakt@openmedis.pl](mailto:kontakt@openmedis.pl)

Product code: SM01990



### Produkt information: Model - arterial leg ulcer, epithelization phase, large size

A realistic wound model simulating leg ulcer in the epithelization phase as a result of peripheral arterial vascular occlusion.

#### Additional information:

- The large surface of the model makes it ideal, for example, for sticking on the lower leg
- This large wound is perfect for adhering at the lower leg and adheres by itself.
- For longer use, it can be fixed with a special skin glue.
- All materials used in this product are dermatologically harmless.
- Model supplied with a case.

## Model - arterial leg ulcer, epithelization phase, small size

**Price inquiry:** +48 605999769, [kontakt@openmedis.pl](mailto:kontakt@openmedis.pl)

Product code: SM01996



### Produkt information: Model - arterial leg ulcer, epithelization phase, small size

A realistic wound model simulating leg ulcer in the epithelization phase as a result of peripheral arterial vascular occlusion.

#### Additional information:

- The small surface of the model covers only a part of the lower leg
- For longer use, it can be fixed with a special skin glue.
- All materials used in this product are dermatologically harmless.
- Model supplied with a case.

## Model - arterial leg ulcer, exudation phase, large size

**Price inquiry:** +48 605999769, [kontakt@openmedis.pl](mailto:kontakt@openmedis.pl)

Product code: SM01992



### Produkt information: Model - arterial leg ulcer, exudation phase, large size

A realistic wound model simulating leg ulcer in the exudation phase as a result of peripheral arterial vascular occlusion.

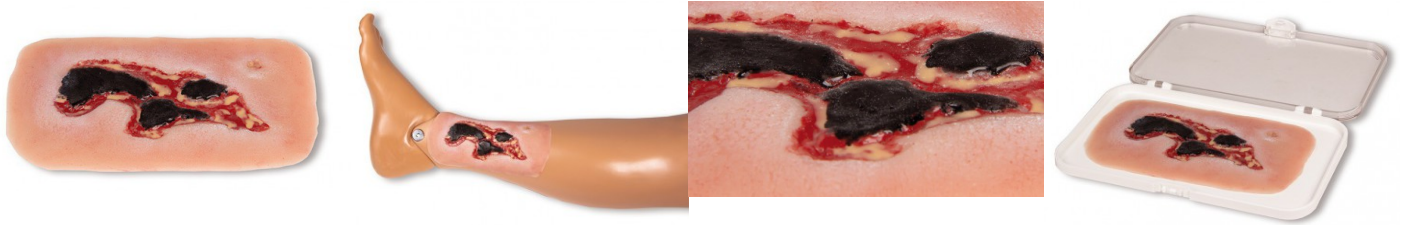
#### Additional information:

- The large surface of the model makes it ideal, for example, for sticking on the lower leg
- This large wound is perfect for adhering at the lower leg and adheres by itself.
- For longer use, it can be fixed with a special skin glue.
- All materials used in this product are dermatologically harmless.
- Model supplied with a case.

## Model - arterial leg ulcer, exudation phase, small size

**Price inquiry:** +48 605999769, [kontakt@openmedis.pl](mailto:kontakt@openmedis.pl)

Product code: SM01998



### Produkt information: Model - arterial leg ulcer, exudation phase, small size

A realistic wound model simulating leg ulcer in the exudation phase as a result of peripheral arterial vascular occlusion.

#### Additional information:

- The small surface of the model covers only a part of the lower leg.
- For longer use, it can be fixed with a special skin glue.
- All materials used in this product are dermatologically harmless.
- Model supplied with a case.

## Model - arterial leg ulcer, granulation phase, large size

**Price inquiry:** +48 605999769, [kontakt@openmedis.pl](mailto:kontakt@openmedis.pl)

Product code: SM01991



### Produkt information: Model - arterial leg ulcer, granulation phase, large size

A realistic wound model simulating leg ulcer in the granulation phase as a result of peripheral arterial vascular occlusion.

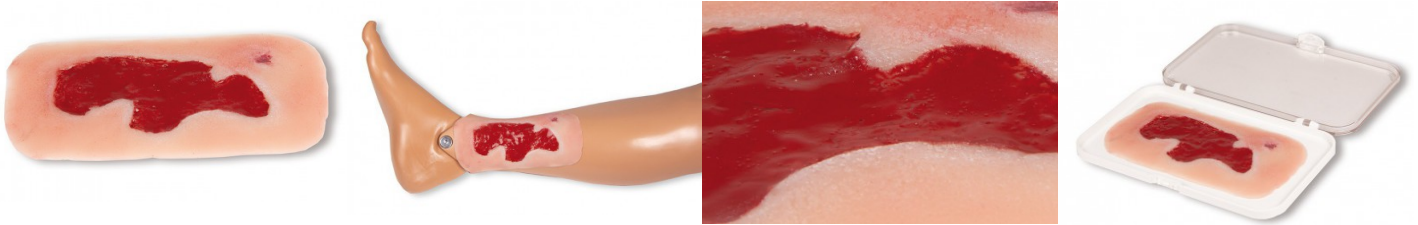
#### Additional information:

- The large surface of the model makes it ideal, for example, for sticking on the lower leg
- This large wound is perfect for adhering at the lower leg and adheres by itself.
- For longer use, it can be fixed with a special skin glue.
- All materials used in this product are dermatologically harmless.
- Model supplied with a case.

## Model - arterial leg ulcer, granulation phase, small size

**Price inquiry:** +48 605999769, [kontakt@openmedis.pl](mailto:kontakt@openmedis.pl)

Product code: SM01997



### Produkt information: Model - arterial leg ulcer, granulation phase, small size

A realistic wound model simulating leg ulcer in the granulation phase as a result of peripheral arterial vascular occlusion.

#### Additional information:

- The small surface of the model covers only a part of the lower leg
- For longer use, it can be fixed with a special skin glue.
- All materials used in this product are dermatologically harmless.
- Model supplied with a case.

## Wound moulage venous leg ulcer, large, epithelisation phase

**Price inquiry:** +48 605999769, [kontakt@openmedis.pl](mailto:kontakt@openmedis.pl)

Product code: SM02904



This self-adhesive wound represents a **venous leg ulcer, a substance defect in the tissue of the lower leg as a result of a chronic venous insufficiency**. The shown **epithelisation phase** represents the most common ulcer disease (60% to 80% of all ulcer diseases) in the stage of building epithelial tissue, finally leading to close the wound.

### Additional informations:

- This large wound is perfect for adhering at the lower leg and adheres by itself.
- For longer use, it can be fixed with a special skin glue.
- All materials used in this product are dermatologically harmless.
- Supplied with storage box.

## Wound moulage venous leg ulcer, small, epithelisation phase

**Price inquiry:** +48 605999769, [kontakt@openmedis.pl](mailto:kontakt@openmedis.pl)

Product code: SM02902



This self-adhesive wound represents a **venous leg ulcer**, a substance defect in the tissue of the lower leg as a **result of a chronic venous insufficiency**. The shown **epithelisation phase** represents the most common ulcer disease (60% to 80% of all ulcer diseases) in the stage of building epithelial tissue, finally leading to close the wound.

Additional informations:

- This small wound is perfect for adhering at the ankle or lower leg and adheres by itself.
- For longer use, it can be fixed with a special skin glue.
- All materials used in this product are dermatologically harmless.
- Supplied with storage box.



## Wound moulage venous leg ulcer, large, granulation phase

**Price inquiry:** +48 605999769, [kontakt@openmedis.pl](mailto:kontakt@openmedis.pl)

Product code: SM02903



This self-adhesive wound represents a **venous leg ulcer, a substance defect in the tissue of the lower leg as a result of a chronic venous insufficiency**. The shown **granulation phase** represents the most common ulcer disease (60% to 80% of all ulcer diseases) in the stage of building granulation tissue. In this stage it is very important to use the suitable dressing to prevent wound healing disorders (fibrin persistence).

Additionaly informations:

- This large wound is perfect for adhering at the lower leg and adheres by itself.
- For longer use, it can be fixed with a special skin glue.
- All materials used in this product are dermatologically harmless.
- Supplied with storage box.

## Wound moulage venous leg ulcer, small, granulation phase

**Price inquiry:** +48 605999769, [kontakt@openmedis.pl](mailto:kontakt@openmedis.pl)

Product code: SM02901



This self-adhesive wound represents a **venous leg ulcer**, a substance defect in the tissue of the lower leg as a result of a **chronic venous insufficiency**. The shown granulation phase represents the most common ulcer disease (60% to 80% of all ulcer diseases) in the stage of building granulation tissue. In this stage it is very important to use the suitable dressing to prevent wound healing disorders (fibrin persistence).

Additional informations:

- This small wound is perfect for adhering at the ankle or lower leg and adheres by itself.
- For longer use, it can be fixed with a special skin glue.
- All materials used in this product are dermatologically harmless.
- Supplied with storage box.

## Wound moulage venous leg ulcer, large, exudation phase

**Price inquiry:** +48 605999769, [kontakt@openmedis.pl](mailto:kontakt@openmedis.pl)

Product code: SM02006



This self-adhesive wound represents a venous leg ulcer, a substance defect in the tissue of the lower leg as a result of a chronic venous insufficiency. The shown exudation phase represents the most common ulcer disease (60% to 80% of all ulcer diseases) in its untreated condition. Fibrin and excessive wound exsudate have to be removed during the wound cleaning. This small wound is perfect for adhering at the ankle or lower leg and adheres by itself. For longer use, it can be fixed with a special skin glue. All materials used in this product are dermatologically harmless.

Supplied with storage box.

## Wound moulage venous leg ulcer, small, exudation phase

**Price inquiry:** +48 605999769, [kontakt@openmedis.pl](mailto:kontakt@openmedis.pl)

Product code: SM02005



This self-adhesive wound represents a venous leg ulcer, a substance defect in the tissue of the lower leg as a result of a chronic venous insufficiency. The shown exudation phase represents the most common ulcer disease (60% to 80% of all ulcer diseases) in its untreated condition. Fibrin and excessive wound exsudate have to be removed during the wound cleaning. This small wound is perfect for adhering at the ankle or lower leg and adheres by itself. For longer use, it can be fixed with a special skin glue. All materials used in this product are dermatologically harmless.

Supplied with storage box.

## Wound Moulage Ileostoma

**Price inquiry:** +48 605999769, [kontakt@openmedis.pl](mailto:kontakt@openmedis.pl)

Product code: SM02962



This moulage shows an **ileostomy**, the second most common type of ostomy. The terminal ileostoma is usually found on the right side of the body and shows the small intestine sewn in above skin level.

Additional information:

- Due to the use of a special plastic compound, all common stoma bags adhere to the moulage.
- The model is suitable for sizing using a stoma template, cleaning the skin with water and attaching the base plate and stoma bag.
- The moulage is in a holder and can also be removed.

## Wound Moulage Colostoma under skin level, incl. stand

**Price inquiry:** +48 605999769, [kontakt@openmedis.pl](mailto:kontakt@openmedis.pl)

Product code: SM02966



This moulage shows a colostomy under skin level, the most common type of stoma creation. The terminal colostoma is usually found in the middle of the body or on the left side of the body and shows the colon sewn in above skin level.

Additional information:

- Due to the use of a special plastic compound, all common stoma bags adhere to the moulage.
- The model is suitable for sizing using the stoma template, cleaning the skin with water and attaching the base plate and stoma bag.
- The moulage is in a holder and can also be removed.

## Wound Moulage Colostoma in abdominal crease, incl. stand

**Price inquiry:** +48 605999769, [kontakt@openmedis.pl](mailto:kontakt@openmedis.pl)

Product code: SM02965



This moulage shows a colostomy in abdominal crease, the most common type of stoma creation. The terminal colostoma is usually found in the middle of the body or on the left side of the body and shows the colon sewn in above skin level.

Additional information:

- Due to the use of a special plastic compound, all common stoma bags adhere to the moulage.
- The model is suitable for sizing using the stoma template, cleaning the skin with water and attaching the base plate and stoma bag.
- The moulage is in a holder and can also be removed.

## Wound Moulage Colostoma with inflammation, incl. stand

**Price inquiry:** +48 605999769, [kontakt@openmedis.pl](mailto:kontakt@openmedis.pl)

Product code: SM02964



This moulage shows a colostomy with inflammation, the most common type of stoma creation. The terminal colostoma is usually found in the middle of the body or on the left side of the body and shows the colon sewn in above skin level.

Additional information:

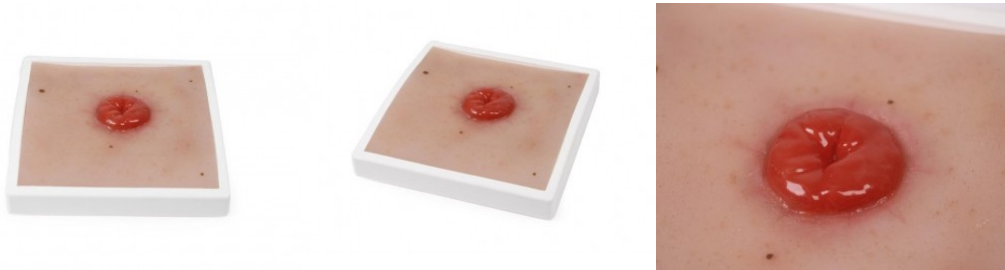
- Due to the use of a special plastic compound, all common stoma bags adhere to the moulage.
- The model is suitable for sizing using the stoma template, cleaning the skin with water and attaching the base plate and stoma bag.
- The moulage is in a holder and can also be removed.



## Wound Moulage Colostoma, incl. stand

**Price inquiry:** +48 605999769, [kontakt@openmedis.pl](mailto:kontakt@openmedis.pl)

Product code: SM02963



This moulage shows a **colostomy**, the most common type of stoma creation. The terminal colostoma is usually found in the middle of the body or on the left side of the body and shows the colon sewn in above skin level.

Additional information:

- Due to the use of a special plastic compound, all common stoma bags adhere to the moulage.
- The model is suitable for sizing using the stoma template, cleaning the skin with water and attaching the base plate and stoma bag.
- The moulage is in a holder and can also be removed.



## Parent Education Baby, male, dark skin

**Price inquiry:** +48 605999769, [kontakt@openmedis.pl](mailto:kontakt@openmedis.pl)

Product code: SM02893



This **Newborn baby doll** can be used for nappy practice and baby care courses for parents. The movable doll can be used for holding and carrying practice, practice of navel care, skin care and nappy practice. The model weighs appr. 1.2 kg, but feels a little heavier because of missing body tension in comparison with a real baby. It has a slightly open mouth and can be used for breastfeeding practice. A stump of the umbilical cord is present to allow navel care practice. Skin folds allow training of proper body hygiene. Head, arms and legs are movable.

**Dark Skin, Size: approx. 50 cm Male version 1.2 kg**

## Parent Education Baby, male, light skin, 2.4kg

**Price inquiry:** +48 605999769, [kontakt@openmedis.pl](mailto:kontakt@openmedis.pl)

Product code: SM02888



This Newborn baby doll can be used for nappy practice and baby care courses for parents. The movable doll can be used for holding and carrying practice, practice of navel care, skin care and nappy practice. The model weighs appr. 2,4 kg, but feels a little heavier because of missing body tension in comparison with a real baby. It has a slightly open mouth and can be used for breastfeeding practice. A stump of the umbilical cord is present to allow navel care practice. Skin folds allow training of proper body hygiene. Head, arms and legs are movable.

Male version 2.4 kg

## Parent Education Baby, male, dark skin, 2.4kg

**Price inquiry:** +48 605999769, [kontakt@openmedis.pl](mailto:kontakt@openmedis.pl)

Product code: SM02894



This **Newborn baby doll** can be used for nappy practice and baby care courses for parents. The movable doll can be used for holding and carrying practice, practice of navel care, skin care and nappy practice. The model weighs approx. 2.4 kg, but feels a little heavier because of missing body tension in comparison with a real baby. It has a slightly open mouth and can be used for breastfeeding practice. A stump of the umbilical cord is present to allow navel care practice. Skin folds allow training of proper body hygiene. Head, arms and legs are movable.

**Dark Skin, Size: approx. 50 cm Male version 2.4 kg**



## Neonate doll for nappy practice, female

**Price inquiry:** +48 605999769, [kontakt@openmedis.pl](mailto:kontakt@openmedis.pl)

Product code: SM01534



This model of a neonate is a true to life replica, but nevertheless highly economically priced. It is therefore eminently suited to group training (bathing and nappy practice). Mobile joints allow all the main exercises in infant care.

Size: 50 cm, weight: 1.2 kg  
Female version.

## Parent Education Baby, female, dark skin

**Price inquiry:** +48 605999769, [kontakt@openmedis.pl](mailto:kontakt@openmedis.pl)

Product code: SM02895



This **Newborn baby doll** can be used for nappy practice and baby care courses for parents. The movable doll can be used for holding and carrying practice, practice of navel care, skin care and nappy practice. The model weighs appr. 1.2 kg, but feels a little heavier because of missing body tension in comparison with a real baby. It has a slightly open mouth and can be used for breastfeeding practice. A stump of the umbilical cord is present to allow navel care practice. Skin folds allow training of proper body hygiene. Head, arms and legs are movable.

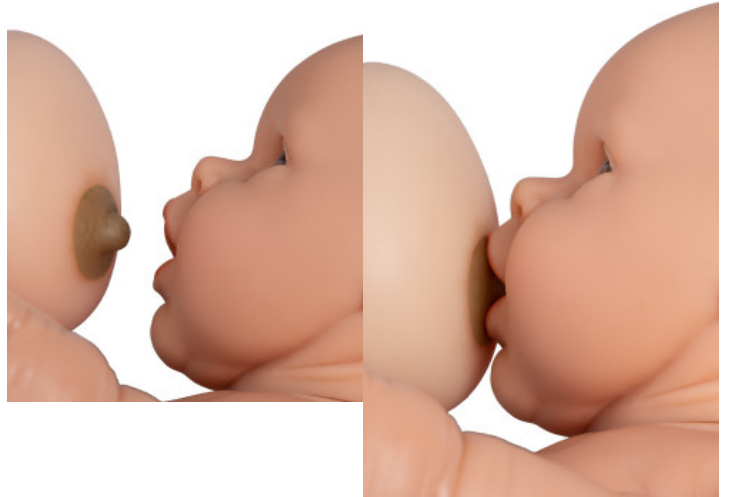
**Dark Skin, Size: approx. 50 cm Female version 1.2 kg**



## Parent Education Baby, female, light skin, 2.4kg

**Price inquiry:** +48 605999769, [kontakt@openmedis.pl](mailto:kontakt@openmedis.pl)

Product code: SM02889



**This Newborn baby doll** can be used for nappy practice and baby care courses for parents. The movable doll can be used for holding and carrying practice, practice of navel care, skin care and nappy practice. The model weighs appr. 1.2 kg, but feels a little heavier because of missing body tension in comparison with a real baby. It has a slightly open mouth and can be used for breastfeeding practice. A stump of the umbilical cord is present to allow navel care practice. Skin folds allow training of proper body hygiene. Head, arms and legs are movable. **Female version 2.4 kg**

## Parent Education Baby, female, dark skin, 2.4kg

**Price inquiry:** +48 605999769, [kontakt@openmedis.pl](mailto:kontakt@openmedis.pl)

Product code: SM02896



This **Newborn baby doll** can be used for nappy practice and baby care courses for parents. The movable doll can be used for holding and carrying practice, practice of navel care, skin care and nappy practice. The model weighs appr. 2.4 kg, but feels a little heavier because of missing body tension in comparison with a real baby. It has a slightly open mouth and can be used for breastfeeding practice. A stump of the umbilical cord is present to allow navel care practice. Skin folds allow training of proper body hygiene. Head, arms and legs are movable.

**Dark Skin, Size: approx. 50 cm Female version 2.4 kg**





## Neonate doll for nappy practice, male, dark skin

**Price inquiry:** +48 605999769, [kontakt@openmedis.pl](mailto:kontakt@openmedis.pl)

Product code: SM02890



This **model of a neonate** is a true to life replica, but nevertheless highly economically priced. It is therefore eminently suited to group training (bathing and nappy practice). Mobile joints allow all the main exercises in infant care.

**Size: 50 cm, Weight: 1.2 kg**



## Neonate doll for nappy practice, female, dark skin

**Price inquiry:** +48 605999769, [kontakt@openmedis.pl](mailto:kontakt@openmedis.pl)

Product code: SM02891



This **model of a neonate** is a true to life replica, but nevertheless highly economically priced. It is therefore eminently suited to group training (bathing and nappy practice). Mobile joints allow all the main exercises in infant care.

**Size: 50 cm, Weight: 1.2 kg**

## Baby-care doll, male

**Price inquiry:** +48 605999769, [kontakt@openmedis.pl](mailto:kontakt@openmedis.pl)

Product code: SM01539



A highly realistic replica of a neonate. The skin feels very natural via the use of a special synthetic material. Weighting corresponds to the normal conditions. The anterior and posterior fontanelles in addition to the acute and sagittal sutures are carefully reproduced and palpable. The head tips backwards when not held correctly. The vertebral column and the mobile testicles are palpable. The nasal cavity, oral cavity and stomach can be aspirated. Measurement of body temperature can be practised in the 5 cm deep anal canal. Owing to the completely stitch-free manufacture, the model is absolutely watertight and can be safely used for bathing practice. The residual umbilical cord allows demonstration and practice of umbilical care and can be simply removed. Use for demonstration of physiotherapeutic exercises (Vojta, Bobath) is very readily possible owing to the flexible arms and legs. General examinations, such as measurements for example, can of course be performed. Putting on nappies and dressing can also be practised. Supplied in a storage bag.

Size: 48 cm, head circumference: 33 cm, weight: 3 kg

## Pressure Ulcer / Bedsore Models

**Price inquiry:** +48 605999769, [kontakt@openmedis.pl](mailto:kontakt@openmedis.pl)

Product code: SM01812



Pressure ulcers, also known as bedsores or decubitus wounds, affect over one million adults every year. The wounds can range from superficial and mildly red on the skin surface to an extremely infected, deep, open wound penetrating down to the bone with blackened or dead tissue. These models illustrate all four wound stages and are used to give instruction on the care and cleaning of the ulcers.

The four stages include:

- Stage 1 — Reddening, unbroken skin
- Stage 2 — Open wound that is reddened with partial skin loss
- Stage 3 — Deep, open wound that reaches through all layers of skin and into the muscle
- Stage 4 — Severe, deep, open wound that reaches through all layers of skin and damages muscle, bone, tendons, and joints

The Pressure Ulcer/Bedsore Models are made with our lifelike skin. Includes four buttocks models representing each stage, four display easels, and instruction key card.

Size: 16.5 x 15.9 x 2.5 cm, Weight: 3.6 kg

## Pat Pressure Injury Model

**Price inquiry:** +48 605999769, [kontakt@openmedis.pl](mailto:kontakt@openmedis.pl)

Product code: SM03879



A unique, compact, comprehensive and realistic model displaying the following pressure injuries: an unstageable eschar/slough wound, Stage 1 (in both darkly and lightly pigmented skin), Stage 2, Stage 3 with undermining, tunneling and slough, a shallow Stage 4 over the malleolus with exposed bone and tendon, and a Stage 4 with exposed bone, tendon, muscle and undermining, tunneling, eschar and slough. The darkly pigmented skin section shows how different a Stage 1, blood blister and suspected DTI (Deep Tissue Injury) may appear depending on the pigmentation. Optional carry case available.

Size: 21 x 32 x 4.5 cm, weight: 1.5 kg

## Decubitus ulcer model in the sacrum area, untreated

**Price inquiry:** +48 605999769, [kontakt@openmedis.pl](mailto:kontakt@openmedis.pl)

Product code: SM02001



A realistic model of an untreated decubitus wound located in the sacral area. Current necrotic tissue and anal folds. The model is made of flexible material that adapts perfectly to the adjacent surface. It can be placed on both students and mannequins. Supplied with a case.

## Decubitus ulcer model in the sacrum area, cleaned

**Price inquiry:** +48 605999769, [kontakt@openmedis.pl](mailto:kontakt@openmedis.pl)

Product code: SM02002



A realistic model of a decubitus wound after surgical cleansing of necrotic tissue located in the sacral area. The borders of the wound and anal folds are visible. The model is made of flexible material that adapts perfectly to the adjacent surface. It can be placed on both students and mannequins. Can be used for demonstration of vacuum therapy. Available in two variants - as a bedsore freshly cleaned or with exudate. Supplied with a box.

## Wound moulage sacral decubitus, cleaned including stand

**Price inquiry:** +48 605999769, [kontakt@openmedis.pl](mailto:kontakt@openmedis.pl)

Product code: SM02967



This moulage shows the sacral area with a pressure ulcer after a surgical cleaning. The necrotic tissue has been removed, wound pockets are present.

### Additional information:

- The wound is available either freshly cleaned or with wound exsudate.
- The moulage can be used for demonstration of vacuum wound therapy.
- The moulage adheres on simulated patients or manikins, it can be fixed with special skin glue for longer training sessions.
- The anal fold is represented to demonstrate the typical challenges when dressing the wound.
- The moulage is delivered in a holder and can also be removed.



## Wound foot with diabetic foot syndrome

**Price inquiry:** +48 605999769, [kontakt@openmedis.pl](mailto:kontakt@openmedis.pl)

Product code: SM02905



This life-like and life-size foot model shows **typical symptoms of the diabetic foot syndrome.**

Additional informations:

- Multiple ulcers and lesions are located at typical positions in different grades.
- Additional symptoms like cracked skin and a necrotic toe are also shown.
- A perfect model for diabetic education as well as for nursing education or medical studies. Especially suitable for wound care management education.

## Wound foot with diabetic foot syndrome, severe stage

**Price inquiry:** +48 605999769, [kontakt@openmedis.pl](mailto:kontakt@openmedis.pl)

Product code: SM02907



This life-size foot model with **diabetic foot syndrome** shows a foot after a ray resection as a result of **necrosis and deep ulcer**.

Additional information:

- The foot shows ulcers, lesions and cracked skin.
- This model is perfect for wound care management education and general nursing education.

## Wound foot with diabetic foot syndrome, severe stage, manikin version

**Price inquiry:** +48 605999769, [kontakt@openmedis.pl](mailto:kontakt@openmedis.pl)

Product code: SM02908



This life-size foot model with **diabetic foot syndrome** shows a foot after a ray resection as a result of **necrosis and deep ulcer**. Additional information:

- The foot shows ulcera, lesions and cracked skin.
- This model is perfect for wound care management education and general nursing education.
- Version for attachment to nursing manikins

## Wound foot with diabetic foot syndrome, manikin version

**Price inquiry:** +48 605999769, [kontakt@openmedis.pl](mailto:kontakt@openmedis.pl)

Product code: SM02906



This life-like and life-size foot model shows **typical symptoms of the diabetic foot syndrome.**

Additional informations:

- Multiple ulcers and lesions are located at typical positions in different grades.
- Additional symptoms like cracked skin and a necrotic toe are also shown.
- A perfect model for diabetic education as well as for nursing education or medical studies. Especially suitable for wound care management education.
- **Version for attachment to a nursing manikin**

# Wound Foot

**Price inquiry:** +48 605999769, kontakt@openmedis.pl

Product code: SM01813



Moulded from a real foot for a true-life experience when assessing the various wounds. Twenty different conditions are presented so you can see and understand how they are different. Great care has been taken to colour each wound just as you would see it on a patient. Once the different etiologies are understood, you can discuss and devise treatment plans that will deliver optimized patient care. The following wounds and abnormalities are included: pressure ulcers, deep tissue injury, callus, amputated toe, gangrene, maceration, partial thickness wounds, corn, ingrown toenail, blister, hammer toes, and skin stapled wound. Comes with positioning base for "hands free" access to all the sites when applying dressings or teaching.

Size: 32 x 20 x 9 cm

## Elderly Pressure Ulcer Foot

**Price inquiry:** +48 605999769, [kontakt@openmedis.pl](mailto:kontakt@openmedis.pl)

Product code: SM03878



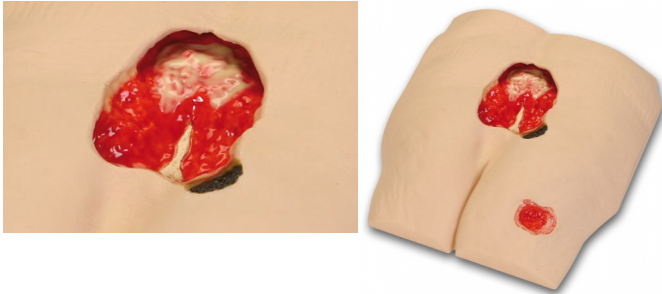
Chronic foot ulcers affect elderly the most, we have designed the Elderly Pressure Ulcer Foot for instruction on care and cleaning of pressure ulcers in various stages. Pressure ulcers are more likely to appear over pressure points such as heels, tips of toes, between toes, or anywhere the bones may protrude and rub against socks, shoes, or bed sheets.

This replica contains all four severity stages: - Stage I: Located on the bottom of the toe. Surface of the skin is red. - Stage II: Located on the bottom of the foot just under the toe. Surface of the skin is red and deeper into the skin layers. - Stage III: Located on the side of the foot. Surface of the skin is red, looks more like a crater, and reaches the bottom layer of the skin. - Stage IV: Located on the heel of the foot. Surface of the skin is red. A great amount of tissue has been damaged, including muscle, bone, joints, and tendons.

## Pressure Ulcer Model

**Price inquiry:** +48 605999769, [kontakt@openmedis.pl](mailto:kontakt@openmedis.pl)

Product code: SM01814



Designed for teaching and training with vacuum assisted closure and negative pressure wound therapy devices, this model features a large sacral Stage IV pressure ulcer, with eschar, subcutaneous fat, undermining, tunneling, slough, eschar and exposed bone (with osteomyelitis) and a Stage III pressure ulcer with subcutaneous fat and granulation tissue. The large size and depth of the Stage IV pressure ulcer, as well as the undermining and tunneling, make it ideal for practicing the proper dressing and preparation of a large wound for use with a negative pressure wound therapy device. The Stage III pressure ulcer is positioned so that the Stage IV can be dressed by itself or a "bridging" dressing can be applied to the Stage IV and Stage III to demonstrate and practice this skill.

Size: 23 x 23 x 11.5 cm, weight: 1 kg

## Edema foot with deep tissue injury for GERI/KERI

**Price inquiry:** +48 605999769, [kontakt@openmedis.pl](mailto:kontakt@openmedis.pl)

Product code: SM02268



This foot comes with five edema inserts which react to pressure in a different way, depending on the stage of edema. Additionally the foot shows a deep tissue injury on the heel. It can be easily attached to the leg of your KERI/GERI manikin.



## Stump Bandaging Lower Torso

**Price inquiry:** +48 605999769, [kontakt@openmedis.pl](mailto:kontakt@openmedis.pl)

Product code: SM01493



Lower torso with amputation stumps for bandaging training.  
Life size.

## Stump Bandaging Upper Torso

**Price inquiry:** +48 605999769, [kontakt@openmedis.pl](mailto:kontakt@openmedis.pl)

Product code: SM02961



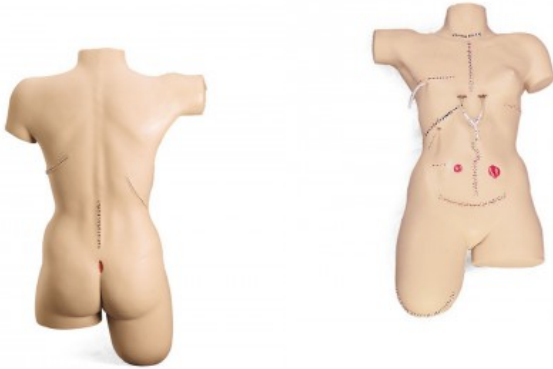
Upper torso with amputation stumps for bandaging training.

\*Life size

## Bandaging Simulator

**Price inquiry:** +48 605999769, [kontakt@openmedis.pl](mailto:kontakt@openmedis.pl)

Product code: SM01841



This simulator consists of a female torso with flexible, lifelike skin which realistically responds to adhesives and all types of bandaging procedures. 14 different wounds allow one to practice wound management techniques, cleaning and bandaging techniques just like on a real patient. Wound closures feature surgical staples and sutures which cannot be removed.

**The simulator is supplied in a carrying case and features the following wounds:**

- Thyroidectomy
- Mid-sternal split with chest tube drains (surgical staples)
- Mastectomy with simulated drain
- Cholecystectomy with simulated T-tube
- Laparotomy (surgical staples)
- Appendectomy
- Colostomy
- Ileostomy
- Abdominal hysterectomy (surgical staples)
- Thoractomy (surgical staples)
- Nephrectomy (surgical staples)
- Laminectomy
- Sacral decubitus ulcer (stage II)
- Leg amputation stump (surgical staples)

Size: 84 x 30.5 x 63.5 cm, weight: 12 kg



## Clinical Chloe Patient Care Simulator

**Price inquiry:** +48 605999769, [kontakt@openmedis.pl](mailto:kontakt@openmedis.pl)

Product code: SM03824



Sophisticated simulators for training in clinical nursing procedures. A variety of exercises may be performed, from simple bandaging and general patient care to breast palpation, catheterization, ostomy management, injection training, and cervical examination.

Features include: - Articulating head, jaw, elbows, wrists, ankles, and knees - Bathing and bandaging activity - Bends and detaches at waist for easy storage - Breast palpation capability with one abnormal breast - Detachable and removable internal tanks - Enema administration capability - Full body - Instruction manual - Interchangeable male and female breast inserts - Interchangeable male and female organs - Intramuscular injection sites in arm, thighs, and buttock - Latch provides secure seal between ostomies and internal tanks - Nasal and oral tube placement - Neck brace - NG and OG tube feeding and gastric suction - Opening for gastrostomy - Realistic eyes for ophthalmic exercises - Realistic urethral passage and bladder for catheterization exercises - Simulated ear canal for otic drops and irrigation - Soft, realistic face skin, hands, feet, fingers, and toes - Stylish wig for hair care exercises and surgical draping - Tracheotomy placement - Transverse colostomy, ileostomy, and suprapubic stomas, to practice irrigation - Upper and lower dentures for oral hygiene - Vaginal douching and pap smear exercises with realistic vagina and cervix Weight: 21 kg



## Five Year Pediatric Care Simulator

**Price inquiry:** +48 605999769, [kontakt@openmedis.pl](mailto:kontakt@openmedis.pl)

Product code: SM03819



The five year old is a sophisticated pediatric simulator for training in standard and advanced clinical procedures. These simulator is now available with optional site specific heart and lung sounds.

Product features:

- Soft, lifelike faceskin, self-molded hair
- Eyes open and close in realistic eyesockets for ophthalmic procedures
- Fully articulating head and jaw with teeth and tongue
- NG and otic exercises
- Bends at waist as in human, jointed elbows, wrists, knees and ankles
- Realistic hands, feet, fingers and toes
- Soft upper body skin over hard upper body for realistic feel
- Detachable at waist for easy storage, bathing and bandaging activity
- Intramuscular injection sites in deltoid and upper thigh
- Interchangeable male organ, male and female catheterization
- Tracheotomy opening
- Removable internal tanks, enema administration
- T-shirt and shorts, neck brace, soft carrying bag, instruction manual

Size: ca. 1.10 m

## Nursing doll, Basic Version

**Price inquiry:** +48 605999769, [kontakt@openmedis.pl](mailto:kontakt@openmedis.pl)

Product code: SM03825



This version comes without internal tanks and without male genital. Made for training of basic nursing like positioning, washing exercises and dressing.

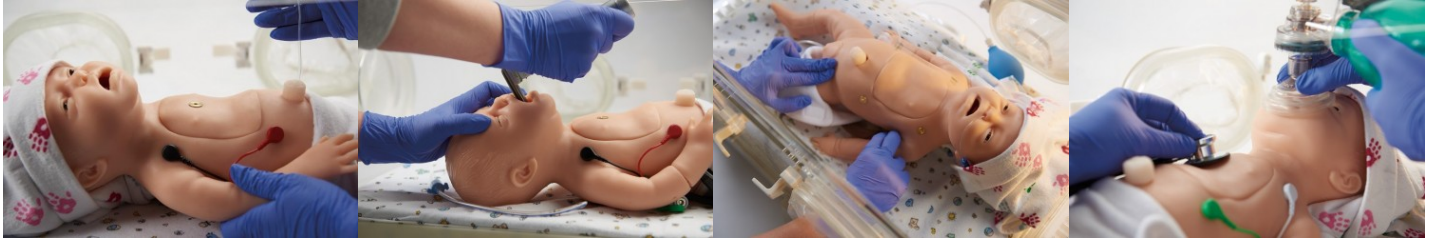
Weight: 16 kg



## **Baby C.H.A.R.L.I.E. Neonatal Resuscitation Simulator without ECG**

**Price inquiry:** +48 605999769, [kontakt@openmedis.pl](mailto:kontakt@openmedis.pl)

Product code: SM02900



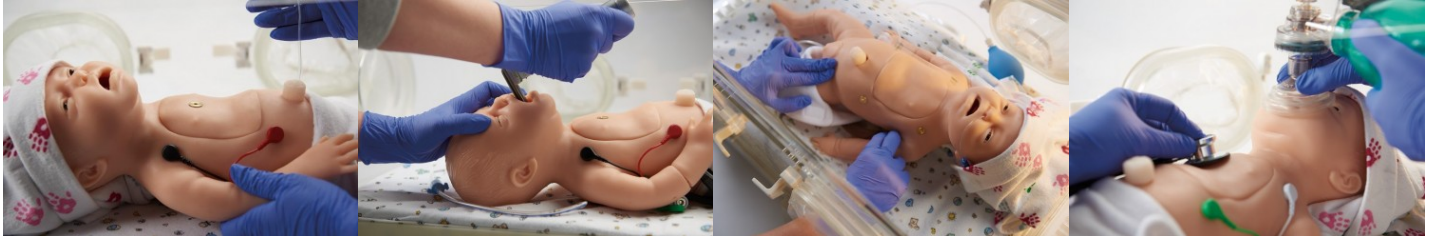
**Baby C.H.A.R.L.I.E.** was designed to satisfy all training needs of the Neonate Resuscitation Program, 7th Edition by the American Academy of Pediatrics. C: Compressions, Cardiac H: Heat compatible A: Airway, Arterial access via the umbilicus R: Resuscitation L: Laryngeal mask capable for oxygen use or PPV I: Intravenous, Intraosseous, Intubation E: - Features: - Airway, breathing, intubation, and ventilation - Birth anomalies - Chest tube placement - CPR - Gastrointestinal (GI) tube - Interchangeable genitalia - Intraosseous infusion - IV hand and foot - Observation and measurement - Palpable manual pulse points in 7 locations - Patent umbilicus with venous and arterial access - PICC site in arm - Urinary catheterization C.H.A.R.L.I.E. comes complete with: - Airways, 2; standard and advanced - Baby powder - Bilateral chest - Blood - Carry bag - Intraosseous bones and skin - IV bag - IV skin and veins for hand and foot - Male and female genitalia - Myelomeningocele - Needles - Omphalocele - Umbilicus - Instruction manual (English) \* You do not need the ECG and defibrillation function? This product offers all functions of Baby C.H.A.R.L.I.E. but without the interactive ECG simulator.



## Baby C.H.A.R.L.I.E. Neonatal Resuscitation Simulator with ECG

**Price inquiry:** +48 605999769, [kontakt@openmedis.pl](mailto:kontakt@openmedis.pl)

Product code: SM02899



**Baby CHARLIE** was designed to satisfy all training needs of the Neonate Resuscitation Program, 7th Edition by the American Academy of Pediatrics.

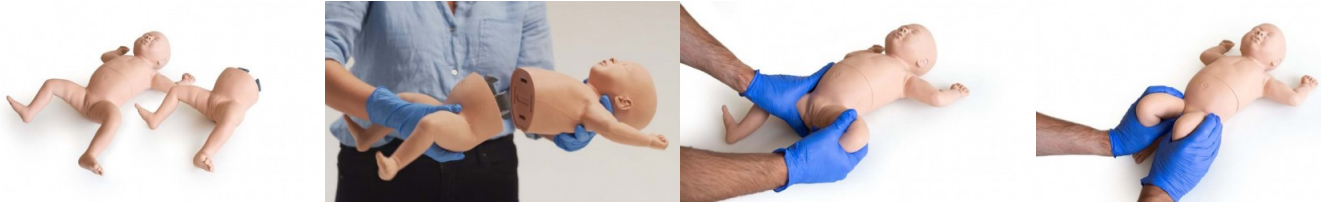
C: Compressions, Cardiac H: Heat compatible A: Airway, Arterial access via the umbilicus R: Resuscitation L: Laryngeal mask capable for oxygen use or PPV I: Intravenous, Intraosseous, Intubation E: ECG (EKG) Features: - Airway, breathing, intubation, and ventilation - Birth anomalies - Chest tube placement - CPR - ECG simulation - Gastrointestinal (GI) tube - Interchangeable genitalia - Intraosseous infusion - IV hand and foot - Observation and measurement - Palpable manual pulse points in 7 locations - Patent umbilicus with venous and arterial access - PICC site in arm - Urinary catheterization C.H.A.R.L.I.E. comes complete with: - Airways, 2; standard and advanced - Baby powder - Bilateral chest - Blood - Carry bag - Defibrillation chest - Intraosseous bones and skin - IV bag - IV skin and veins for hand and foot - Male and female genitalia - Myelomeningocele - Needles - Omphalocele - Umbilicus - Instruction manual (English) Interactive ECG Simulator: - Defibrillation shock can be delivered through manikin or simulator - Connect defibrillator/external pacer to simulator using adapters - Built-in circuitry allows you to defibrillate and pace directly into the ECG simulator and observe ECG rhythms through the PADS connector - Convert feature - Select another rhythm to run immediately after defib discharge - Pacing can be done on any manufacturer's defibrillator - Battery saver feature powers-off simulator automatically when not in use - 6 waveforms - 17 adult/pediatric rhythms



## Infant Hip Examination Trainer

**Price inquiry:** +48 605999769, [kontakt@openmedis.pl](mailto:kontakt@openmedis.pl)

Product code: SM03654



Developmental dysplasia of the hip (DDH) occurs in approximately 1 or 2 babies in 1,000. The Limbs & Things Infant Hip Exam Trainer has been designed to meet the specific requirements of healthcare professionals training to identify and diagnose DDH.

This infant hip trainer comes with 2 interchangeable lower leg modules that allow trainees to identify the differences between normal and abnormal hip pathologies. The Lower Abnormal hip module's range of motion gives trainees a realistic representation of the following:

- Dislocating a hip that is lax in the socket
- Relocating a hip that is dislocated from the socket, feeling the "clunk" as the procedure is completed
- Using the Galeazzi sign to identify the visual signs of DDH
- Using both the Ortolani Test and Barlow Maneuver on both hip pathologies

### SKILLS GAINED

- Performing the Ortolani test
- Performing the Barlow maneuver
- Recognising the Galeazzi sign

### OVERVIEW

- The infant hip trainer is quick and easy to set up
- Our durable model allows for repeated training using the Ortolani Test and Barlow Maneuver
- The Infant Hip Examination Trainer comes with two hip modules:
- Normal hip module - this allows trainees to understand the haptics of how a normal hip would react during an examination
- Abnormal hip module - one hip that is dislocated and can be maneuvered into the correct position and the other hip is lax and can be dislocated, both using the Ortolani Test and Barlow Maneuver
- Articulated knee and ankle joints mean the baby's feet can be placed flat on a bed replicating the Galeazzi sign

### REALISM

- A realistic 'clunk' can be felt when resetting the dislocated hip
- This model is anatomically accurate for a 1 month old female infant

### VERSATILITY

- Interchangeable lower modules allow trainees to recognize normal hips as well as two types of abnormal hip

### SAFETY

- This product is latex free



#### ANATOMY

- Palpable greater trochanter on the left and right femurs to aid correct hand placement
- The infant hip simulator has: articulating hip, knee and ankle joints for the Barlow and Ortolani maneuvers and Galeazzi sign

#### CONTAINS

- Infant Hip Exam - Upper
- Infant Hip Exam - Lower Normal (Light Skin Tone)
- Infant Hip Exam - Lower Abnormal



## Infant Ostomy Trainer

**Price inquiry:** +48 605999769, [kontakt@openmedis.pl](mailto:kontakt@openmedis.pl)

Product code: SM01913



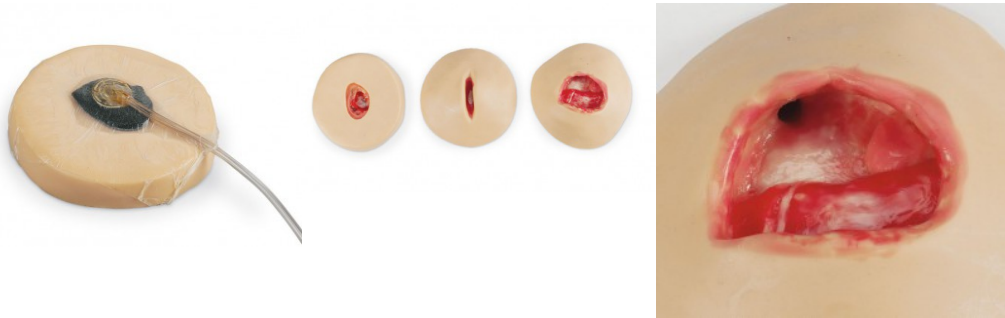
Caring for a baby with an ostomy may feel overwhelming. The Infant Ostomy Trainer has been created to educate caregivers and parents on how to give special care to an infant with a stoma. This trainer will help by teaching step-by-step procedures for cleaning and caring for a baby's stoma and changing the pouching system. The anatomy of the colostomies were carefully reproduced to provide lifelike appearance and functions. A soft, pliable material is used for the stomas in order to achieve the most realistic tactile sensation. The syringes included are used to inject simulated stool through ports to the colostomy sites. Consistency of the simulated stool can be thinned by adding water. The colostomy sites can also be irrigated. The simulated stool may be reused.



## Negative-Pressure Wound Therapy (NPWT) Trainers

**Price inquiry:** +48 605999769, [kontakt@openmedis.pl](mailto:kontakt@openmedis.pl)

Product code: SM01840



The Negative-Pressure Wound Therapy (NPWT) Trainers assist with the instruction of advanced therapy management for many types of acute and chronic wounds.

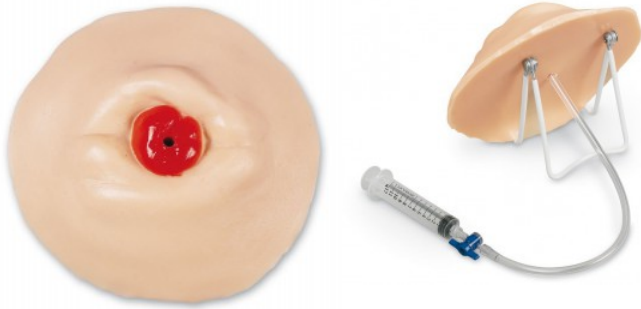
Use the trainers for demonstration of application, placement, and management of a negative-pressure wound therapy system and for the care of wounds. These unique trainers have different depths of wound care, including tunneling. The lifelike texture of the skin and realistic appearance of the wounds give added realism to training.

Appropriate wound care bandaging products can be used. Pump device and bandaging supplies not included.

## Retracted Ostomy Care Training Model

**Price inquiry:** +48 605999769, [kontakt@openmedis.pl](mailto:kontakt@openmedis.pl)

Product code: SM01988



Designed to help introduce the essentials of ostomy care to patients and students, this model is ideal for demonstration and practice of ostomy care procedures on a stoma that has sunk below skin level, including cleaning and changing the pouching system. The anatomy of the ostomy is carefully reproduced to provide lifelike functions and appearance. A soft, pliable material is used for the stoma in order to achieve the most realistic tactile sensation. Dilation of the stomas can be demonstrated and practiced, along with application of postoperative and permanent ostomy bags on stomas that can often be difficult to obtain a good seal around. The ostomy can actually be irrigated. Syringe

is included to pump simulated stool through the unit to provide drainage and excretion at the ostomy. The consistency of the stool can be varied by using water to thin the material.

Includes model, display easel, syringe, simulated stool, lubricant, and instruction manual.

Size: 18 x 8 cm, Weight 1.6 kg

## Ostomy Care Model

**Price inquiry:** +48 605999769, [kontakt@openmedis.pl](mailto:kontakt@openmedis.pl)

Product code: SM02986



This model contains **four stomas** that can be lubricated and dilated with an inserted finger. Model may be washed, taped, bandaged or fitted with ostomy bags. Supplied with lubricant.

## Ostomy Care Trainer

**Price inquiry:** +48 605999769, [kontakt@openmedis.pl](mailto:kontakt@openmedis.pl)

Product code: SM01984



This model contains four stomas that can be lubricated and dilated with an inserted finger. This model contains four stomas that can be lubricated and dilated with an inserted finger. Model may be washed, taped, bandaged and The ileostomy can be used to illustrate how to fit a pouch, and all four stomas can be irrigated with a catheter, washed, and bandaged. Comes with lubricant, draping sheet, and carrying case that measures 31 cm x 23 cm x 13 cm.

## Stoma Trainer

**Price inquiry:** +48 605999769, [kontakt@openmedis.pl](mailto:kontakt@openmedis.pl)

Product code: SM01914



The Ostomy Pouching Trainer helps prepare patients, their families, and healthcare professionals for this life-changing event, improving their initial exposure and their future quality of life. The Ostomy Pouching Trainer will facilitate the practice of proper pouching techniques to maintain healthy skin while developing good hand-eye coordination. Pre-operative teaching allows patients and their families to begin learning about ostomies prior to surgery when they are less distracted - reducing anxiety.

They can practice using four different stomas:

- Urostomy with Stents
- Loop Stoma (you provide the bridge)
- End Stoma
- Flush Stoma

With the Ostomy Pouching Trainer, each of these stomas can have simulated stool or urine output and can be placed in four different locations:

- Contact dermatitis
- Standard healthy skin
- Flush placement with folds and mucocutaneous separation
- Candidiasis

Patients and healthcare staff can grasp, in a realistic, life-sized model, what they may have had difficulty understanding from pictures, especially in those cases where language or comprehension may be an obstacle. Seeing the stomas and visualizing the location and function of the various types, including the discharge from them, is essential to learning. Proper teaching helps increase patients' understanding of their condition and the adjustments which may be necessary for achieving a satisfactory standard of life with their new stoma.



## Advanced Foot Problems

**Price inquiry:** +48 605999769, [kontakt@openmedis.pl](mailto:kontakt@openmedis.pl)

Product code: SM03833

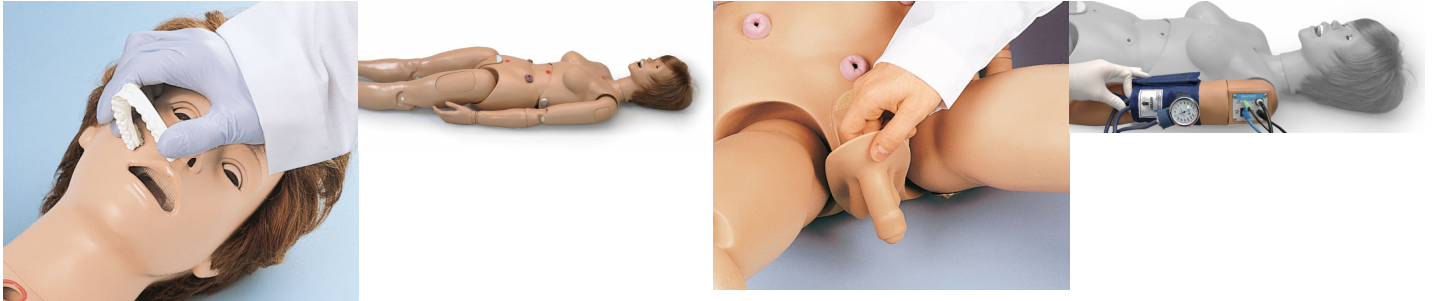


Extremely realistic, life-size, hand-painted foot model. This foot replica shows realistically advanced stages of the affected foot with dry, cracked skin, bumps, corns, onychomycosis, hammer toe, open sore, ingrown toenail and gangrene. The model helps to make patients aware of what can happen to early-stage diseases if left unattended. It can also serve as an overview of common diseases. Size: 8.8 x 22.9 x 11.4 cm, Weight: 0.4 kg

## Nursing doll, standard version

**Price inquiry:** +48 605999769, [kontakt@openmedis.pl](mailto:kontakt@openmedis.pl)

Product code: SM01458



This doll offers training in a variety of clinical procedures to nurses and other health care professionals. The external appearance of the model is female. Attachment of the male genitals, however, converts the manikin into a male model. It can simulate a number of exercises from transverse colostomy management to tracheotomy, from intramuscular injection to ophthalmological treatment.

It offers the following features:

- Douching and pap smear exercises
- Enema administration
- Head supplied with wig for combing, shampooing, and head draping exercises
- Injection site on buttock for intramuscular injection
- Injection sites on left and right arm for intramuscular and subcutaneous injections
- Instruction in complete intestinal lavage with stomas connected to internal reservoir system
- Instruction in gastrostomy, ileostomy, and transverse colostomy management
- Interchangeable male and female organs
- Male and female urinary catheterization
- Otic, nasal, tracheotomy, and gastrostomy openings and connections for ear syringing, gastric suction, and tracheotomy exercises
- Removable dentures
- Separated fingers and toes for bandaging exercises
- Separately inserted eyes for administration of orbital medications, removal of foreign bodies, and eye irrigation
- Suprapubic stoma management and drainage

The joints are strong and movements lifelike, even to the extent of permitting pronation and supination of the forearm. Made from the highest quality vinyl plastic with a high degree of resistance to wear and tear. The surface is smooth, impervious to water, oils, and liniments.

Weight: 16 kg, size: ca. 1.60 m



## Newborn Nursing Skills and ALS Simulator

**Price inquiry:** +48 605999769, [kontakt@openmedis.pl](mailto:kontakt@openmedis.pl)

Product code: SM02898



This training model was developed to meet the objectives of the Neonatal Resuscitation Program's course curriculum published by the American Academy of Pediatrics.

It offers multiple training opportunities: **Airway, Breathing, and Ventilation** - Anatomical landmarks - Auscultation of lung sounds during ventilation - Bilateral lung expansion with visually dramatic chest rise - ET tube insertion - Manually control rate and depth of respiration - Positive pressure ventilation - Realistic chest compressions - Sellick maneuver - Unilateral chest movement option (collapsed lung and mainstem intubation) **Birth Anomalies** - Neural tube defect (Myelomeningocele) easily attaches to the back - Omphalocele **Chest Tube** - Practice chest tube insertion and care of the chest tube area **Cleaning and Diaper Changing** - Practice cleaning, bathing, and diaper changing - Water proof and completely immersible **Gastrointestinal (GI)** - Accepts a OG/NG tube for practicing tube feeding and suctioning **Monitoring** - Various monitors, sensors, and electrodes may be attached and connected **Observation and Measurement** - Observe and measure each part of the body (head, umbilicus, skin, etc.) **Scenarios** - Build your own high-risk delivery, emergency, transport, and NICU scenarios **Skin** - Delicate appearance and texture of real skin - Soft, durable lifelike skin **Suction** - Practice suctioning nose, oral cavity, and stomach **Umbilicus** - Can be attached and detached easily - Made of soft, realistic material - Practice blood withdrawal or infuse fluids - Patent umbilicus with venous and arterial access **Venous Access** - Accepts IV catheter or butterfly infusion needle - IV hand and foot with realistic flashback from pressurized system - Soft, lifelike skins with small lumen tubing for realistic practice

Includes: Simulator, replaceable airway (2), bilateral lung, collapsed lung, functional (patent) umbilicus, omphalocele, myelomeningocele, hand skins (2), foot skins (2), vein system for hand, vein system for foot, 500 ml fluid supply bag (2), 3 cc syringe with needle, 25 gauge infusion butterfly needle, 25 ml syringe, artificial blood powder, lubricant, baby powder, and hard carry case. **Newborn size: 48 cm (crown to heel), 3400 g weight, 36.8 cm head circumference**

## Nursing Kid SimPad compatible

**Price inquiry:** +48 605999769, [kontakt@openmedis.pl](mailto:kontakt@openmedis.pl)

Product code: SM01855



Nursing Kid is a training manikin realistically representing a six-year old child. He is designed for skill and scenario based training of the care and management of a variety of pediatric in-hospital patients. Training includes sound auscultation (optional), IV cannulation, urinary catheterization, and general pediatric patient care. This child is ideal for clinical training in core pediatric in-hospital clinical skills.

### Product benefits:

- Delivers education efficiently, targeting key skills specific to pediatric care providers
- Durable, rugged and lifelike; made to withstand years of use
- Highly mobile for use in multiple clinical settings and hospital transport
- Efficient training care and management of a variety of both common and uncommon in-hospital pediatric patients including wound assessment and care, first aid, and child abuse training

### Product features:

- Head with anatomical landmarks, trachea, and esophagus along with simulated lungs and stomach allow the practice of many procedures, including NG, OG, tracheal care and suctioning, and insertion, securing and care of endotracheal tubes
- Bilateral deltoid, bilateral thigh, gluteal intramuscular injections possible
- Articulating IV arm allows for practice of IV cannulation, medication administration and site care and maintenance
- Exchangeable male and female organs for Catheterization training
- Enema administration

### Shipment:

- Nursing Kid is shipped with manikin, airway lubricant, simulated blood, hospital gown, carry case, and directions for use.

### SimPadT Controller:

- Pre-programmed scenarios provide standardized training while customizable scenarios and real time instructor control allows adaptation to meet individual students needs
- Presents normal and abnormal heart, breath, and bowel sounds for auscultation



## Nursing Baby (SimPad Capable)

**Price inquiry:** +48 605999769, [kontakt@openmedis.pl](mailto:kontakt@openmedis.pl)

Product code: SM01837



A full-size infant manikin that realistically simulates a 6-month old patient. It is specifically designed for training professionals in the practice of basic and advanced infant patient care procedures.

### Features

- Irrigation of the eye and ear (simulated)
- Nasal packing
- Ear, eye, nose and mouth care
- Tracheostomy care and tracheal suctioning
- NG tube insertion, care and removal
- Gastrostomy tube care and feedings possible
- Various oxygen delivery procedures
- Bilateral thigh and deltoid intramuscular injections
- Full range of motion for realistic patient handling
- Facilitates administration of rectal suppositories
- Ileostomy stoma care
- Insertion, securing and care of endotracheal tubes
- Insertion and suctioning of oropharyngeal and nasopharyngeal airways
- Facilitates practice of height and weight measurement and physical exam
- Variable Fontanelles: Normal, Bulging, Depressed
- Interchangeable male and female genitalia with urinary reservoir
- Complete urinary catheterization
- Will retain indwelling or straight catheter

### IV Training

- Articulating IV arm with replaceable skin and infusible vein system allows peripheral intravenous therapy and site care
- Venipuncture possible in the antecubital fossa and dorsum of the hand
- Articulating IV leg with skin and veins
- Venipuncture possible in the medial and lateral malleolus sites
- Heel stick simulation

### IO Training

- Articulating, infusible IO leg with replaceable mandrel and skin
- Simulated tibia and landmarks at the tibial tuberosity and medial malleolus
- Heel drain will connect to reservoir for infusion exercises

### Sounds - SimPad PLUS System (Required for operation - sold separately)

- Lung sounds synchronized with breathing rate, 0 - 60 BPM



- Individual lung or bilateral sound selection
- Normal and abnormal bowel sounds
- Heart sounds available
- Pre-recorded vocal sounds or live vocal feed via microphone

**Patient Monitor (Optional)**

- Touchscreen simulated patient monitors provides concise clinical feedback for physiological parameters.
- The monitors color screen is configurable and provides multiple simulated parameters, each presenting multi-level alarms.
- Simulated parameters include HR, ECG, SpO2, BP, RR, Temperature, and etCO2.

## Special needs Infant, male

**Price inquiry:** +48 605999769, [kontakt@openmedis.pl](mailto:kontakt@openmedis.pl)

Product code: SM01857



Special needs infants require specific yet gentle care which includes the performance of vital medical procedures. This newborn-size infant allows health care facilities and medical staff to teach special procedures and develop a nursing care plan for special needs infants. The Special Needs Infant was developed for a wide range of educational training, including beginning nursing students. Medical devices that can be used include: tracheostomy tube and suction catheter, gastrostomy tube, nasogastric tube, and urethral catheter. Other general cares that may be practiced include: bathing, diapering, and various dressing changes. Carrying bag included. Tracheostomy and gastrostomy tubes not included.

Procedures that can be practiced include:

- Tracheostomy care (placement and suctioning) - size 3 mm
- Gastrostomy care (lavage and gavage) - size 14 FR
- Nasogastric care (placement, lavage, gavage, and suctioning) - size 8 FR or smaller
- Urethra catheterization (insertion, placement, and care) - size 8 FR
- Colostomy stoma (basic care purposes only)
- Male version.



## Special needs Infant, female

**Price inquiry:** +48 605999769, [kontakt@openmedis.pl](mailto:kontakt@openmedis.pl)

Product code: SM02892



**Special needs infants** require specific yet gentle care which includes the performance of vital medical procedures. This newborn-size infant allows health care facilities and medical staff to teach special procedures and develop a nursing care plan for special needs infants. The Special Needs Infant was developed for a wide range of educational training, including beginning nursing students. Medical devices that can be used include: tracheostomy tube and suction catheter, gastrostomy tube, nasogastric tube, and urethral catheter. Other general cares that may be practiced include: bathing, diapering, and various dressing changes.

Carrying bag included. Tracheostomy and gastrostomy tubes not included.

Procedures that can be practiced include: - Tracheostomy care (placement and suctioning) - size 3 mm - Gastrostomy care (lavage and gavage) - size 14 FR - Nasogastric care (placement, lavage, gavage, and suctioning) - size 8 FR or smaller - Urethra catheterization (insertion, placement, and care) - size 8 FR - Colostomy stoma (basic care purposes only)

## Micro-Preemie Infant Simulator

**Price inquiry:** +48 605999769, [kontakt@openmedis.pl](mailto:kontakt@openmedis.pl)

Product code: SM02897



According to a WHO study one out of ten babies is born prematurely. Delivery of an extremely low birth weight infant (=1000g) remains to be an extreme medical emergency. **The Micro-Preemie manikin simulates a 25-week neonate** – the smallest, most realistically proportioned. The manikin is entirely flexible and offers training opportunities for a number of commonly performed procedures. Extraordinary realism is achieved with the preemie's pose and lack of muscle tone.

- Invaluable for simulation training in the care and handling techniques for infants requiring multiple medical interventions at the limits of viability - Perfect for NICU, emergency medical response teams, flight medics, mock code scenarios, nursing schools, medical schools, hospitals, and family education - Simple to use for simulation, requires no specialized equipment, and is compact and highly mobile

**Features & Functions:**

- Airway, breathing, and ventilation
- Chest tube
- Cleaning and diaper changing
- Delivery
- GI - IV access
- Monitoring
- Neural tube defect (Myelomeningocele)
- Observation and measurement
- Scenarios
- Simulated breathing
- Skin and wound care
- Skin is very soft and lifelike
- Stoma care
- Suction
- Umbilicus with optional omphalocele
- Various monitors, sensors, electrodes, etc., can be attached to the manikin wherever needed
- Ventilation Includes: Micro-Preemie Simulator, diaper, hat (color may vary), umbilicus, omphalocele, neural tube defect, bilateral chest block, unilateral chest block, airway, 3 cc syringe, 25-gauge butterfly needle, lubricant, blood powder, and bulb and tube assembly.

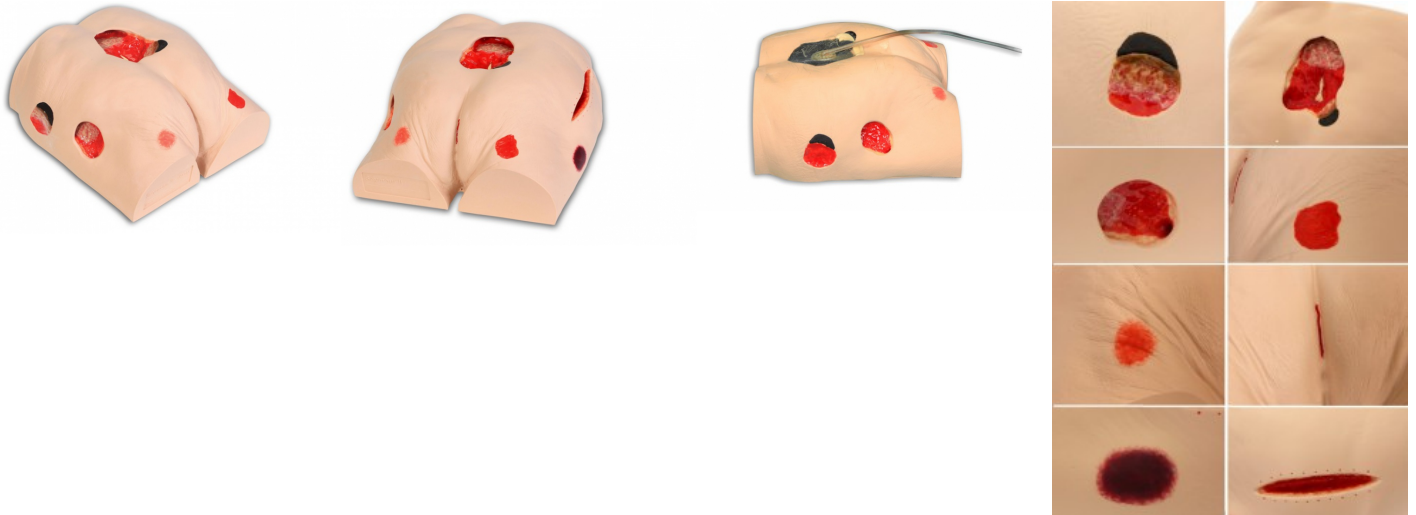
**Specifications:**

- Age: 25-week gestation, length: 30 cm from head to heel, hand-to-hand
- Width: 22 cm, head circumference: 23 cm, head depth: 8 cm, shoulder-to-shoulder
- Width: 10 cm, stomach circumference: 22 cm, toe-to-toe width: 15 cm, torso depth: 5 cm
- Weight: 0.91 kg

## Seymour II Dekubitus-Simulator

**Price inquiry:** +48 605999769, [kontakt@openmedis.pl](mailto:kontakt@openmedis.pl)

Product code: SM01815



This new, improved version of the approved Decubitus-Simulator is made of even more realistic material and is perfect for dressing practice. The model was molded from a 74-year-old patient and shows the following pressure ulcers: Stage I, stage II, stage III and Stage IV. It also shows a suspected deep tissue injury (DTI), a unstageable eschar/slough wound and a 14 cm dehiscent wound. Life size. Optional carrying bag available.



**An advanced model of excretory stomas with a set of replaceable stomas.**

**Price inquiry:** +48 605999769, [kontakt@openmedis.pl](mailto:kontakt@openmedis.pl)

Product code: SM01989



## Advanced stoma care simulator

**Price inquiry:** +48 605999769, [kontakt@openmedis.pl](mailto:kontakt@openmedis.pl)

Product code: SM01985



Reproduction of an abdomen showing the anatomy of both a colostomy and ileostomy to provide lifelike functions and appearance. Dilation of the stomas can be demonstrated and practiced, along with application of postoperative and permanent ostomy bags. The colostomy can be irrigated. Drainage and excretion at the ileostomy (water) and colostomy (simulated stool) can be pumped by syringes. Delivered with simulated stool and carrying case.

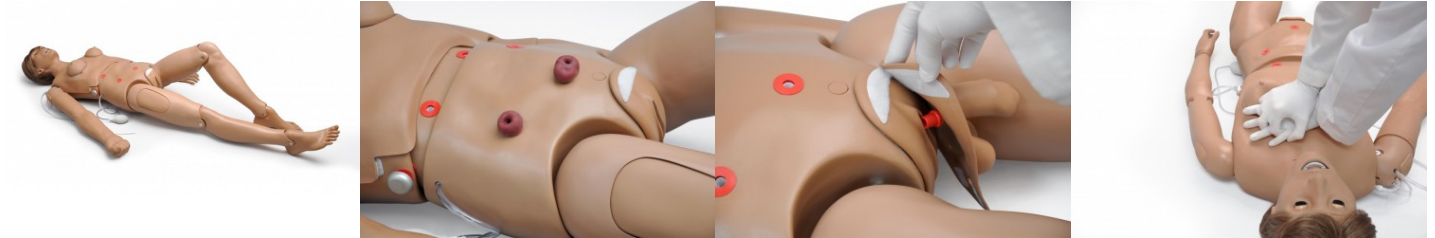
Size: 45.5 x 45.5 x 30.5 cm, weight: 11 kg



## Advanced Clinical Chloe Nursing Doll

**Price inquiry:** +48 605999769, [kontakt@openmedis.pl](mailto:kontakt@openmedis.pl)

Product code: SM03822



Take your nursing education to a new level! With this exercise model you can view and record compressions and ventilation using the Omni Code Blue Pack that can be connected to any computer for CPR evaluation and recording (computer and monitor not included).

General nursing: - Bathing and bandage exercises - Full body - Interchangeable male and female genital organs included - Realistic eyes for exercises such as eye dropping - One pupil is dilated - Eyes can be opened and closed - Realistic urinary tract for bladder catheterization - Dentition (upper and lower jaw) for oral hygiene - Soft, realistic skin on face, hands, feet, fingers and toes - Simulated ear canal for ear drops and irrigation - Colostoma on the transverse intestine, ileostomy, suprapubic stomata for douching - Gastrostomy opening (PEG) - Enema reservoir - Wig for hair care and for practicing the surgical cover - Set with two pressure ulcers - Foot with ulcer optional, please order separately - Manual palpable pulse Breast palpation: - Interchangeable female and male breast inserts - Possibility of breast palpation with an abnormal breast CPR: - Practice possibility CPR - Mask- bag ventilation with realistic breast lift - Realistic heart, lungs, ribs, stomach and liver for unmatched CPR Performance - Omni Code Blue Pack included for monitoring compression and ventilation Airway management: - Anatomically correct airways - Tracheotomy opening - Tracheotomy with interchangeable trachea - Trachea, bronchi and lungs allow learning airway management skills - Tongue, epiglottis, vocal cords and esophagus have realistic appearance and haptics - Nasal and oral intubation - Naso- and orogastric probe placement Moving body parts: - Head - Jaw - Elbow - Wrists - Knee - Ankle Injection training: - Intramuscular Injection sites in arms, thighs and buttocks - Extended injection arm R17600B included GYN Training: - Vaginal irrigation and Pap smear exercise with realistic vagina and cervix Other: - Removable inner reservoirs - Movable and dismountable at the waist for easy storage - Secure locking of stomata and internal reservoirs - Carrying bag - User manual (English) - Neck brace **Blood pressure measuring arm optionally available Weight: 36.3 kg**



## Ostomy Care Training Models Set

**Price inquiry:** +48 605999769, [kontakt@openmedis.pl](mailto:kontakt@openmedis.pl)

Product code: SM01986



Includes 5 independent Ostomy Care Training Models: Nonfunctioning Double Barrel Ostomy Care Training Model, Nonfunctioning Prolapsed Ostomy Care Training Model, Functioning Healthy Ostomy Care Training Model, Functioning Infected Ostomy Care Training Model, and Functioning Necrotic Ostomy Care Training Model. Designed to help introduce the essentials of ostomy care to patients and students, these units are ideal for demonstration and practice of ostomy care procedures. The anatomy of the ostomies is carefully reproduced to provide lifelike functions and appearance. A soft, pliable material is used for the stomas in order to achieve the most realistic tactile sensation. Dilation of the stomas can be demonstrated and practiced, along with application of postoperative and permanent ostomy bags. Both functioning and nonfunctioning models are included.