

Heart and lungs auscultation simulator

Price inquiry: +48 605999769, kontakt@openmedis.pl

Product code: SM02004



Full-size adult torso with a head and noticeable landmarks. Designed for learning to auscultate the sounds of the heart and lungs. Along with the phantom, the set includes a dedicated Virtual Stethoscope and sound markers mounted under the surface of the phantom's skin. The markers are located in 13 places: 9 on the front side of the chest and 4 on the back. The virtual stethoscope has an on / off button and a sound switching button. There are blue points on the torso that indicate the location of the marker. The points can be removed, and the chest and back skin can be removed to locate the blue points. Each sound marker is responsible for generating a different sound in the stethoscope during auscultation. External speakers can be connected to the phantom, which enable group auscultation training.

Set contains:

- adult torso
- virtual stethoscope
- set of external speakers

Paracentesis Trainer

Price inquiry: +48 605999769, kontakt@openmedis.pl

Product code: SM03615



The Paracentesis Trainer offers dual functionality for diagnostic and therapeutic procedures. Palpation or ultrasound guided techniques can be used in the lower abdominal quadrants for the insertion of the needle and catheter while avoiding the liver, spleen and bowel.

Effective simulation training is essential, as paracentesis is a common procedure that's practiced across a wide range of disciplines around the world.

Echolucent pads and Echogenic organs inside the trainer give trainees the opportunity to become familiar with the internal anatomy under ultrasound, and recognizing how to safely insert a needle or catheter into the peritoneal cavity.

SKILLS GAINED

- Familiarity with the abdominal regions and underlying anatomy
- Palpation of anatomical landmarks
- Identification of excess fluid
- Using ultrasound guidance, trainees can visualize the insertion site and check for vital organs beneath
- Insertion of needle into the peritoneal cavity for therapeutic or diagnostic purposes
- Professional-to-patient communication

OVERVIEW

- Landmark or ultrasound techniques can be practiced (side by side)
- Internal echogenic anatomy to allow recognition of landmarks under ultrasound
- Two 3.5 liter chambers can be filled with water for drainage practice
- Cost effective consumable pads

REALISM

- Realistic tissue and needle response

VERSATILITY

- Self sealing pads withstand up to 200 needle or up to 100 rocket catheter insertions
- Ability to insert and remove drain
- Positions both supine and lying on side

CLEANING

- Skin surface is washable using soap and water

SAFETY



- Latex free

ANATOMY

- This product can be used with a simulated patient
- Torso featuring bony landmarks and umbilicus
- Internal anatomy includes:
 - Liver
 - Spleen
 - Bowel
 - Floating Bowel

CONTAINS

- Product Image
- Paracentesis Skin
- Paracentesis Pads (x2)
- Paracentesis Liver
- Paracentesis Spleen
- Paracentesis Bowel Insert
- Paracentesis Floating Bowel
- Paracentesis Clamping Frame
- Paracentesis Large Volume Refill System
- Paracentesis Base Unit
- Carry Case

WORKS WITH

- Paracentesis Pads (x2)
- Paracentesis Skin
- Paracentesis Liver
- Paracentesis Spleen
- Paracentesis Bowel Insert
- Paracentesis Floating Bowel
- Paracentesis Clamping Frame
- Paracentesis Large Volume Refill System

Abdominal Examination Trainer

Price inquiry: +48 605999769, kontakt@openmedis.pl

Product code: SM01532



An anatomically accurate adult male torso, used to teach and practise the palpation, auscultation and percussion elements of abdominal or gastrointestinal (GI) examination. Ideal for OSCE preparation and assessment. With interchangeable organs of varying sizes, and an integral MP3 player providing realistic sounds, the trainer provides the ability to differentiate between normal and abnormal pathology.

Skills Gained:

- Familiarity with the abdominal regions and underlying anatomy
- Practice in abdominal palpation, auscultation and percussion
- Ability to differentiate normal from abnormal pathology
- Identification of ascites, specifically shifting dullness and fluid thrill
- Identification of gaseous distension and bowel obstruction
- Ballottement of kidneys
- Professional-to-patient communication

Product Anatomy:

- Torso featuring abdomen, pelvis and lower part of thorax
- Bony landmarks include ribs, costal margin, xiphisternum, pubic crest and anterior superior iliac spines
- 3 Livers: slightly enlarged, enlarged with smooth edge and enlarged with irregular edge
- 2 Spleens: slightly enlarged and markedly enlarged
- Enlarged Kidney
- Distended Bladder
- 2 Aortas: normal and aneurysmal
- Set of 6 Abdominal Pathologies including 4 smooth masses and 2 irregular hard masses
- Distension Set including ascites bag, gaseous distension bag, pump and foam insert
- Simplified representation of lower thoracic and lumbar spine

You will receive:

- 60005 Abdominal Examination Base Unit
- 60006 Abdominal Examination Skin
- 60007 Abdominal Fluid Bag
- 60008 Abdominal Examination Organ Locator
- 60009 Abdominal Wall
- 60010 Abdominal Examination Livers (set of 3)
- 60011 Abdominal Examination Spleens (set of 2)
- 60012 Abdominal Examination Kidneys (x2)
- 60013 Abdominal Examination Bladder
- 60014 Abdominal Examination Pathologies (set of 6)
- 60015 Abdominal Examination Aortas (set of 2)
- 60016 Abdominal Examination – Distension Set
- 60053 International 5v DC Power Supply



- Carry case

Chest Drain & Needle Decompression Trainer

Price inquiry: +48 605999769, kontakt@openmedis.pl

Product code: SM03614



Limbs & Things' Chest Drain & Needle Decompression Trainer has been designed to meet the specific requirements of healthcare professionals. The trainer is also approved for use on ATLS V10 courses, with needle decompression possible at the 2nd, 4th and 5th intercostal spaces.

OVERVIEW

- Approved for use in ATLS V10 courses
- Reservoirs in the rear of the model can be filled with fluid or mock blood to represent pleural effusion

REALISM

- Needle decompression air reservoirs provide realistic releases of air on insertion of needle
- Anatomically accurate representation of an adult male torso with raised arms
- Standard Pads have a Pleural Layer which has realistic give and “pop” when puncturing with forceps or finger
- Combined use of the Advanced Pads and the chest reservoirs allows for the simulation of pleural effusion

VERSATILITY

- Able to perform the Seldinger Technique
- Trainer can be used in a sitting or supine position

CLEANING

- Clean the product with a damp soft cloth or sponge, using warm water with mild detergent
- Always drain, clean and dry after use to ensure that the trainer remains in good condition

SAFETY

- This product is latex free
- Product must be stored dry
- Trainer & accessories are heavy when packed in carrying case, take care when transporting
- Standard Chest Drain Pads are not suitable for use with liquids

ANATOMY

- Adult male torso with raised arms
- Internal landmarks: ribs, lung and diaphragm

SKILLS GAINED

- Needle decompression/ needle thoracostomy of a tension pneumothorax at both the 2nd and 5th intercostal space



- Ultrasound guided chest tube insertion, also known as the Seldinger Technique, including insertion of the needle into the pleural space under direct vision and ultrasonic recognition of chest structures
- Open or cut-down chest tube insertion, including recognition of correct position, surgical incision, blunt dissection through the chest wall, perforation of pleura and finger sweep
- Suturing of the tube to the chest wall
- Use of a chest drain, including using with an underwater seal

CONTAINS

- Needle Decompression Pads (Pack of 2)
- Advanced Chest Drain Pads (Pack of 2)
- Standard Chest Drain Pads (Pack of 2)
- Chest Drain Rib Frame (Left)
- Chest Drain Rib Frame (Right)
- Chest Drain Ribs (Pack of 12)
- Chest Drain Lung
- Chest Drain Diaphragm
- Torso
- Carry case
- Chest Drain Needle Decompression Pump
- Chest Drain Respiratory Swing Pump
- 12 piece Slotted Retaining Knobs set with tightening key

WORKS WITH

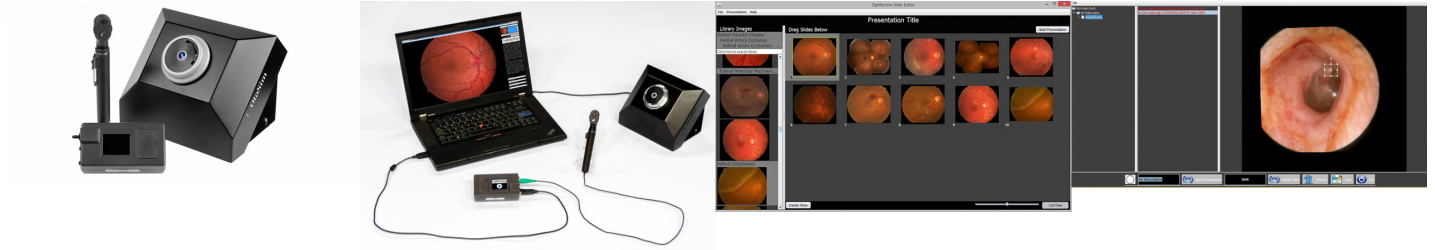
- Chest Drain Rib Frame (Left)
- Chest Drain Rib Frame (Right)
- Advanced Chest Drain Pads (Pack of 2)
- Standard Chest Drain Pads (Pack of 2)
- Chest Drain Ribs (Pack of 12)
- Standard Chest Drain Pads (Pack of 10)
- Chest Drain & Needle Decompression Trainer (Light Skin Tone)
- Chest Drain Lung
- Chest Drain Diaphragm



OphthoSim - Eye examination simulator

Price inquiry: +48 605999769, kontakt@openmedis.pl

Product code: SM01647

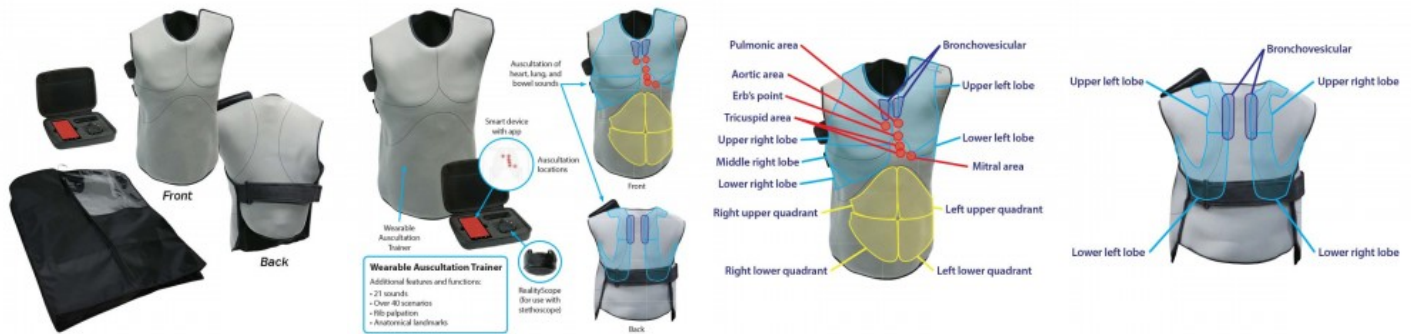


Immersive Learning Platform redefines Ophthalmoscopy Training. OphthoSim is a hand-on simulation system that radically transforms how students learn to diagnose and treat eye pathologies. Its proprietary software and accompanying tools empower students to actively diagnose real-world eye conditions within a simulated environment.

Wearable Auscultation Trainer

Price inquiry: +48 605999769, kontakt@openmedis.pl

Product code: SM03103



This Wearable Auscultation Trainer lets students practice rib palpation, stethoscope placement, and sound recognition as well as patient care skills. Worn by students, standardized patients or manikins, this trainer provides a variety of skills training opportunities. Students will hear all heart, lung and bowel auscultation sounds engineered to sound correct through a stethoscope.

Contents:

- Wearable Auscultation Trainer
- Smart device with app
- Garment bag
- RealityScope
- Quick Start Guide
- Downloadable curriculum
- 1-year limited warranty

Features:

- RealityScope attaches to any stethoscope
- Anatomical landmarks built into the vest
- Sounds play only when RealityScope is placed over corresponding auscultation sites
- Includes a smart device and app programmed with 21 sounds and over 40 scenarios, such as bradypnea, hyperactive bowels and systolic murmurs
- Includes standards-based curriculum plus presentation slides, student activities and assessments



Blood pressure measurement arm for GERI/KERI Doll

Price inquiry: +48 605999769, kontakt@openmedis.pl

Product code: SM02266



Blood pressure measurement arm for GERI/KERI Nursing Dolls.

SAM BASIC - Child Model

Price inquiry: +48 605999769, kontakt@openmedis.pl

Product code: SM01809



The SAM BASIC™ trainer engages the technology of the SimScope™ stethoscope to simulate adult or pediatric heart, lung, and bowel sounds utilizing a large sounds library. Using the provided SimScope™ stethoscope, users are able to access a large variety of pathological conditions in order to customize scenarios.

- Utilizes the extensive Cardionics proprietary heart, lung, bowel, and bruit sounds library
- Listen at anatomically correct auscultation sites
- Easy to use
- Portable and lightweight
- Customizable to fit specific scenarios and programs
- Wifi upgrade available allowing for remote selection of sound Scenarios

SimulScope Auscultation-System

Price inquiry: +48 605999769, kontakt@openmedis.pl

Product code: SM01811



The SimulScope allows physicians and students the ability to hear live physiological sounds with up to 20 other people at the same time. The SimulScope provides less intrusion on patients as only one stethoscope is placed on him or her. It is also effective in the simulation lab or classroom when used with simulators or manikins. Changing from low frequency to high frequency is easy with the SimulScope. Landmarks are provided on the unit to indicate best settings for both heart and breath sounds. Using a HeartMan Infrared Headphone, up to 20 listeners can engage simultaneously. The stethoscope attached to the SimulScope acts as a receiver of sounds, the SimulScope acts as a broadcasting unit, and the HeartMan headphone acts as a receiver projecting sounds into the ear through binerals. This FDA approved product is popular in both universities and hospitals.

The product includes: 6 HeartMan Infrared Headphones, 1 Stethoscope Assembly, 1 Power Supply for Charging the Battery, SimulScope Carrying Case.



Blood Pressure Simulator with iPod® Technology

Price inquiry: +48 605999769, kontakt@openmedis.pl

Product code: SM03837



This standalone unit incorporates sphygmomanometer placement, palpation of the radial pulse, variable systolic and diastolic pressures from 0-300 mm Hg in two mm increments, variable amplitude of sound heard at the antecubital site, sound jack for group listening, auscultatory gap setting, and heart rate settings. This battery operated trainer can be plugged into AC to save batteries. The trainer comes with an iPod®, AC adapter, BP cuff, and a carry bag.

Size: 89 x 35.6 x 23 cm, Weight: 7.7 kg

Ear examination Simulator

Price inquiry: +48 605999769, kontakt@openmedis.pl

Product code: SM01173



This simulator allows practice in the examination of the ear. It consists of a head with 6 interchangeable flexible ears with lifelike external and internal structures. Embedded colored prints in 5 out of the 6 ears allow the diagnosis of various pathologies. One ear is not colored, but can be used for earwax removal exercises. The simulator is supplied with 2 tubes of synthetic earwax, nine 35mm slides (5 conditions as below plus 4 conditions of our supplementary set) and a carry-on-case. An Otoscope is not included.

The following normal conditions and pathologies can be observed:

- Normal tympanic membrane
- Muroid otitis media
- Serous otitis media with fluid level
- Chronic otitis media with perforation
- Normal tympanic membrane with slanted ear canal

Size: 38 x 38 x 26 cm, weight: 7.7 kg

ECG Simulator

Price inquiry: +48 605999769, kontakt@openmedis.pl

Product code: SM03105



Use this award-winning one-of-a-kind **ECG Simulator** to teach accurate placement of ECG/EKG leads on the body through rib palpation; how to read 3-, 4-, 5- and 12-lead rhythms; and how to recognize those rhythms on screen and in hard copy. The accompanying software provides individual practice and assessment opportunities on rhythm reading and lead placement, while the included curriculum addresses methods for mitigating commonly read errors.

Contents:

- ECG Simulator
- ECG Electrode Supply Pack
- Tablet
- 20 student workbooks
- Basic ECG Rhythm Flashcard set
- 2 AA alkaline batteries
- Storage case
- 1-year limited warranty
- Curriculum

Specifications:

- Shipping Dimensions: 117 x 76 x 20 cm
- Shipping Weight: 11 kg

Blood Pressure Simulator

Price inquiry: +48 605999769, kontakt@openmedis.pl

Product code: SM03104



Use this award-winning Blood Pressure Simulator, a one-of-a-kind training tool, to teach and practice proper techniques for taking blood pressure prior to actual clinical experience. This wearable simulator distinguishes blood pressure sounds and Korotkoff phases. Students can use it on standardized patients or manikins to make practice scenarios even more realistic.

Contents:

- Storage Case
- Cuff (sphygmomanometer)
- Electronics box - trainer
- Pulse simulator
- Quick start guide
- Online access to curriculum
- 1-year limited warranty

Blood pressure Training System

Price inquiry: +48 605999769, kontakt@openmedis.pl

Product code: SM03836



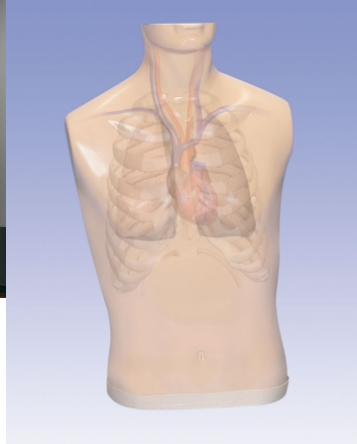
The Blood Pressure Training System includes a full-size adult left arm that may also be attached to some of our nursing manikins. This is a versatile training tool developed to assist health professionals teach the processes and skills required to perform blood pressure auscultation procedures and techniques.

Features - Full size left arm that may also be attached to some manikins - Programmable, palpable radial pulse when cuff pressure is less than the selected systolic blood pressure - Korotkoff sounds K1 through K4 (K5 is silence) audible between systolic and diastolic pressures - Korotkoff sounds automatically silenced if auscultation gap is selected - Korotkoff sounds automatically adjusted depending upon selected heart rate and the rate of cuff deflation - Conventional stethoscope to auscultate Korotkoff sounds in the antecubital area - Programmable Blood Pressure Auscultation Tutor - Adjustable systolic and diastolic pressures - Adjustable auscultation gap - Adjustable pulse rate - Display tracks cuff pressure - Optional speakers with volume control allow students to hear what the individual student hears while using the stethoscope - Soft carrying bag - Instruction manual

Auscultation Simulator

Price inquiry: +48 605999769, kontakt@openmedis.pl

Product code: SM01171



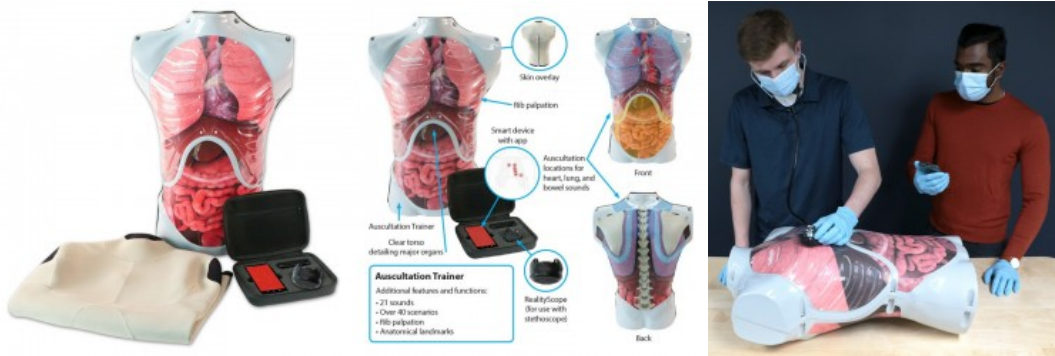
An invaluable teaching aid to study heart diseases, especially those that students or doctors do not hear very often during their practical work. This model is the first one in the world to simulate the characteristic changes in heart sounds and murmurs associated with uncommon heart conditions. The simulator reproduces 20 different heart sounds at 4 positions (aortic, pulmonic, tricuspid, and mitral valves) as well as 10 different respiratory sounds at 3 positions. All sounds can be heard by using a stethoscope. The heart rate can be adjusted. Consists of a soft-skin torso, a smartscope and a digital remote control with English display.

Size: 62 x 43.5 x 27.5 cm, weight: 12.6 kg

Auscultation Trainer

Price inquiry: +48 605999769, kontakt@openmedis.pl

Product code: SM03101



Use our award-winning Auscultation Trainer to teach students rib palpation, stethoscope placement and how to accurately recognize heart, lung, and bowel sounds. The clear torso details major organs for easy auscultation site identification. Students will hear all heart, lung and bowel auscultation sounds engineered to sound correct through a stethoscope.

Contents:

- Auscultation Trainer torso
- Smart device with app
- RealityScope (stethoscope attachment)
- Storage case
- 1-year limited warranty
- Downloadable curriculum

Features:

- RealityScope attaches to any stethoscope
- Clear torso details major organs
- Anatomical landmarks built into the trainer
- Skin overlay removes easily
- Sounds play only when RealityScope is placed over corresponding auscultation sites
- Includes a smart device and app programmed with 21 sounds and over 40 scenarios, such as bradypnea, hyperactive bowels and systolic murmurs
- Includes standards-based curriculum plus presentation slides, student activities and assessments



Child heart and lung sounds auscultation trainer

Price inquiry: +48 605999769, kontakt@openmedis.pl

Product code: SM01172



This self-contained heart and lung sound generator delivers site specific sounds of a four-year old, delivered through ten lung speakers and a heart speaker located in the normal auscultation sites for pediatric assessment. The use of speakers in these locations enables the use of any stethoscope without incurring additional cost for special equipment. The unit can be run using the special handheld remote control. An external speaker jack supports broadcasting the sounds during your classroom introduction to lung and heart sounds, or you can use it for audible testing more than one student at a time. A selector control allows classroom broadcasts of speakers in specific locations so that students hear precise sound anomalies encountered when they auscultate the manikin. No programming installation is required. The unit comes with a power cord, user reference, and carry case.

Baby Hippy

Price inquiry: +48 605999769, kontakt@openmedis.pl

Product code: SM02979



Reproduction of the lower torso and limbs of a female newborn designed to train professionals in diagnosing both congenital hip dislocation and hip dislocatability.

- Dislocated left hip for practice of the Ortolani Jerk-Sign
- Lax right hip for performing the Barlow Maneuver

Diagnostic and procedural ear trainer

Price inquiry: +48 605999769, kontakt@openmedis.pl

Product code: SM01487



Now with this new trainer, students, residents, and practicing physicians can master the skills needed to examine the human ear using visual cues, correctly diagnose common diseases, clean the ear canal, remove a foreign body, and perform a myringotomy with ear tube insertion. The Diagnostic and Procedural Ear Trainer is anatomically correct. Life-like right and left ears teach diagnostic and procedural techniques and are removable for easy maintenance and storage. For the ultimate in realism, the middle ear can be filled with various fluids. The instructor controls the color and consistency of the fluids. Another feature that brings this trainer as close to life as possible is the inclusion of nine diagnostic cartridges with full-colour photo prints illustrating:

- Normal tympanic membrane
- Muroid otitis media
- Serous otitis media with an air-fluid level
- Chronic otitis media with small and large tympanic membrane perforations
- Two views of attic cholesteatoma
- Atelectatic middle ear otitis
- Tympanic sclerosis

Trainer comes complete with two ears, approximately 100 pre-cut eardrums, specially formulated ear wax, one standard middle ear cartridge with syringe, adjustable stand, and a hard carry case. Otoscope, ventilation tubes, and surgical instruments are not provided.

Weight: 5 kg

Knee and Ankle Sports Injury Assessment Trainer

Price inquiry: +48 605999769, kontakt@openmedis.pl

Product code: SM03102



Use this one-of-a-kind Knee and Ankle Sports Injury Assessment Trainer to help students learn how to diagnose and test common sports injuries when real-life examples are not available. Its articulating joints and muscles allow students to get hands-on practice assessing a variety of common ligament and tendon tears, including ACL, MCL, anterior talofibular and more. Additionally, a dial enables users to customize the degree of impact for added realism.

Contents:

- Knee and Ankle Sports Injury Assessment Trainer
- Quick start guide
- Downloadable curriculum
- 1-year limited warranty

Features:

- Articulating joints
- Turn the model upside-down, sideways and off the edge of a table
- Evaluate 3 knee and 4 ankle injuries

Joint Injury Description Test Knee ACL Grades 1-3 of ACL ligament tears Lachman and Anterior Drawer Tests Knee MCL Grades 1-3 of MCL ligament tears Valgus Stress Test Knee LCL Grades 1-3 of LCL ligament tears Anterior Drawer Test Ankle ATFL Sprain to anterior talofibular ligament Anterior Drawer of the Ankle Ankle CFL Sprain to the calcaneofibular ligament Talar Tilt Test Ankle Deltoid Ligament Normal and complete disruption Eversion Stress Test Ankle Achilles Tendon Nominal and full rupture Calf Squeeze Test and Palpation