

Cervical Dilatation & Effacement Module (CD&E) - PROMPT Flex

Price inquiry: +48 605999769, kontakt@openmedis.pl

Product code: SM03664



Part of the PROMPT Flex range, the Cervical Dilatation & Effacement Module allows for training in the assessment and management of both the latent, and active, early stages of labor. This model can be used to create a wide variety of birthing scenarios to identify:

- Position/tilt of the cervix
- Consistency of the cervix
- Cervical effacement
- Cervical dilation – early/latent phase, active phase and transition phase
- Fetal station
- Normal and abnormal foetal presentation
- Moulding of the skull bones
- Caput formation
- Presence of membrane and amniotic fluid

This cervical dilation module can be purchased as an add-on to the Standard or Advanced PROMPT Flex simulators, and allows for the assessment of labor progression, likelihood of vaginal delivery, and suitability for induction. **SKILLS GAINED**

- Vaginal examination to assess:

Position of the cervix
Foetal presenting part
Moulding and caput formation
Presence/absence of membrane

- Calculation of Bishop's Score (also known as Pelvic Score):
- 5 measurements of the pelvic examination:

Centimetres dilated
Effacement
Foetal station
Consistency
Position

- Other score modifiers:

Pre-eclampsia
Each previous vaginal delivery
Postdate pregnancy
Nulliparity
Overdue/preterm rupture of membranes

- Trainees are able to practise the skills required to assess both normal and complicated births



- Palpable ischial spines allowing for accurate assessment of station
- Model accommodates a variety of training methods

REALISM

- Rupturable membrane, with fluid, on flexed or deflexed head
- Dynamic Rig allows adjustment of dilation enabling scenario based, and communication skills, training
- Realistic representation of cervixes, including anterior lip

VERSATILITY

- Offers a large variety of presentations, including: stations, relative positions, and degrees of rotation
- Easy removal and replacement of presenting parts and cervixes when using the Static Rig
- Presenting parts and cervix can be set up externally to the model for demonstration

CLEANING

- Remove excess lubricant from the component surfaces
- Clean components with a soft damp cloth, warm water and mild detergent
- Allow to dry before storing trainer

SAFETY

- This product is latex free
- Using alternative lubricants to that recommended, may weaken or damage components of the cervical dilation model
- Wear gloves while handling the simulator and during procedures, sharp surfaces (fingernails and jewellery) can lead to silicone damage
- To prolong the life of caputs, keep covered in the supplied plastic tray when not in use

ANATOMY

- Cervices:

0cm dilation, unripe/firm, no effacement

1cm dilation, unripe, 40% effacement

2cm dilation, medium ripeness/firmness, 50% effacement

3cm dilation, ripe/soft, 65% effacement

4cm dilation, ripe/soft, 70% effacement

4cm dilation, ripe/soft, 100% effacement

Anterior lip, approximately 10cm dilation

Dynamic cervix for use with dynamic rig, allows for cervical dilation from 4cm to 10cm, ripe/soft, 100% effacement

- Presenting parts:

Flexed head

Deflexed head

Face presentation

Brow presentation

Breech presentation

- Moulding and caput formation:

Flexed or deflexed head

Parietal bones, one fixed and two moveable to simulate variation of moulding

Caput

- Perineum for CSM and CD&E Modules - PROMPT Flex
- Pelvic Ring for CD&E Module - PROMPT Flex
- Latent Labor Cervixes for CD&E Module - PROMPT Flex
- Dynamic Cervix for CD&E Module - PROMPT Flex
- Presenting Parts for CD&E Module - PROMPT Flex



- Difficult Labor Heads for CD&E Module - PROMPT Flex
- Amniotic Membrane Set for CD&E Module - PROMPT Flex
- Caputs for CD&E Module - PROMPT Flex

WORKS WITH

- Birthing Simulator PROMPT Flex - Standard (Light Skin Tone)
- Birthing Simulator PROMPT Flex - Advanced (Light Skin Tone)

Cervical Cerclage Module (CCM) - PROMPT Flex

Price inquiry: +48 605999769, kontakt@openmedis.pl

Product code: SM03669



The Cervical Cerclage module (CCM) for the Birthing Simulator - PROMPT Flex is an ideal training solution to teach trainees both elective and emergency cerclage procedures to prevent pre term birth. Designed with haptics and anatomic realism in mind, the CCM module features a realistic representation of a dilating cervix with presenting amniotic sac for emergency procedures, and restrictive space within the Vagina to perform the procedure as in real life. With this module, trainees can learn the fundamentals of management of cervical incompetence, Elective Cerclage, Emergency (or rescue) cerclage and also the McDonald cerclage technique. The module is to be used in conjunction with our Birthing Simulator - PROMPT Flex Standard and Advanced, which allows for the creation of multiple simulated labor training scenarios, and is an ideal training solution for all skills relating to both routine and emergency deliveries. The birthing simulator may be used for hybrid simulation as well as stand-alone bench top training. For extended use, additional modules include:

- Post-Partum Hemorrhage
- Cesarean-section
- Cervical Dilatation & Effacement
- Compression Suture Uterus
- Lower Legs

SKILLS GAINED

- Management of cervical incompetence
- Elective cerclage
- Emergency (or rescue) cerclage
- McDonald cerclage technique

OVERVIEW

- Detachable cervix to allow for repeated training in both elective and emergency cerclage procedures
- The detachable OS provides instant feedback to the trainee
- Fluid-filled amniotic sac replicates bulging membranes for emergency procedures
- Cost-effective as each detachable cervix (OS) can be sutured repeatedly

REALISM

- Realistic representation of a dilating cervix with presenting amniotic sac for emergency procedures
- Restrictive space within the vagina to perform the procedure as in real life

VERSATILITY

- Allows for the practice of both elective and emergency cervical cerclage
- Can be quickly and easily fitted into PROMPT Flex

CLEANING

- Skin washable with soap and water



SAFETY

- Main product is latex free however Amniotic Sacs provided contain latex

ANATOMY

- Realistic representation of a dilating cervix and bulging membranes with soft parting labia and accurately sized vaginal vault mimicking the confined space available when performing the procedure

CONTAINS

- OS for CCM - PROMPT Flex - Elective (Pack of 5)
- OS for CCM - PROMPT Flex - Emergency (x5)
- Amniotic Sac for CCM - PROMPT Flex (x5)
- PROMPT Flex Cervical Cerclage Frame
- PROMPT Flex Cervical Cerclage Vagina
- PROMPT Flex Cervical Cerclage Fluid System
- PROMPT Flex Cervical Cerclage Perineum

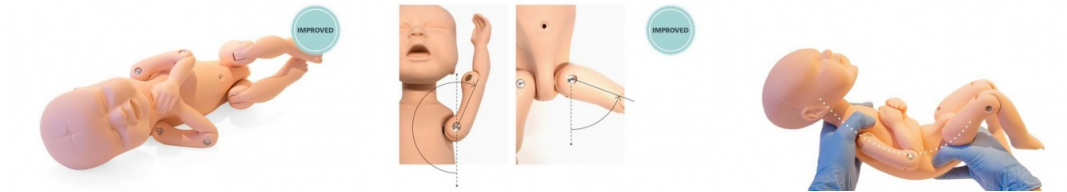
WORKS WITH

- Birthing Simulator PROMPT Flex - Standard (Light Skin Tone)
- Birthing Simulator PROMPT Flex - Advanced (Light Skin Tone)

Baby - PROMPT Flex - Standard

Price inquiry: +48 605999769, kontakt@openmedis.pl

Product code: SM03668



The PROMPT Flex Enhanced Standard Baby represents a full-term infant, which works with the PROMPT Flex Birthing Mother (80120) to simulate a variety of birthing scenarios. Its key anatomical landmarks and features allow for focused learning when managing the delivery of the baby.

The newly restructured articulation in the shoulder and hip joints further enhances the realism for difficult birthing scenarios such as deeply impacted head and shoulder dystocia. **SKILLS GAINED**

- When used with the Birthing Mother, the Enhanced Baby allows learners to practice both regular and difficult birthing scenarios
- Ability to Identify key landmarks, which aid successful delivery
- Improved articulation and range of movement in the arms and legs allows trainees to be more confident in deeply impacted head and shoulder dystocia scenarios

OVERVIEW

- Works as part of the PROMPT Flex range
- Improved and more realistic limb articulation
- Correct anatomical landmarks for delivery
- Versatile use for wide range of delivery types
- Flexion allows for life-like maneuvering

REALISM

- Fully articulated baby
- Full-term infant
- Realistic head to accommodate operative vaginal births
- Narrow and shallow cranial sutures to help improve suction during vacuum assisted births

VERSATILITY

- Can be used in conjunction with the PROMPT Flex Birthing Mother to train in a variety of different birthing scenarios, including; normal birth, breech birth, operative vaginal birth, vacuum-assisted birth and shoulder dystocia

SAFETY

- This product is latex free

ANATOMY

- Distinct clavicles and scapulae
- Flexible head with fontanelles
- Fully articulated hip and shoulder joints



- Flexion in the thoracolumbar region

WORKS WITH

- Birthing Simulator PROMPT Flex - Standard (Light Skin Tone)

Birthing Torso

Price inquiry: +48 605999769, kontakt@openmedis.pl

Product code: SM02367



An economical simulator for those programs dedicated to practicing all facets of childbirth. This full-size upper and lower female torso comes with removable stomach cover and one articulating birthing baby with umbilical cord and placenta. The automatic birthing system rotates baby as it moves through the birth canal. Allows you to listen to foetal heart sounds, measure head descent, and cervical dilation. Features multiple placenta positions. Replaceable dilating cervixes, practice on postpartum suturing on vulval inserts, and practice of Leopold Maneuvers.

The torso comes with:

- two umbilical cords
- two dilating cervixes
- two umbilical clamps
- two vulval inserts
- one Omni™ controller
- three vulva for postpartum suturing
- talcum powder and silicone lubricant
- instruction manual
- soft nylon carrying bag

Weight: 23 kg

Cervical and fetal positioning examination simulator

Price inquiry: +48 605999769, kontakt@openmedis.pl

Product code: SM01919



A multi-modular simulator designed to study cervical dilation and fetus assessment. In total, it consists of 15 separate modules in the form of square blocks.

Description of individual modules:

- Hard and immature cervix.
- Partial puncture of the cervix, opening: 6 cm, fetal occipital position front right.
- Immature cervix, opening 5 cm, fetal or pelvic fetal position.
- Cervical collapse, 9 cm dilatation, fetal occipital posture.
- Cervical collapse, 7 cm dilatation, fetal right occipital position.
- Partial puncture of the cervix, 5 cm dilation, buttocks position.
- Partial puncture of the cervix, 1 cm of dilation.
- Wicking the cervix, 8 cm dilation, head position.
- Immature cervix, 3 cm dilation, prolapse of the umbilical cord.
- Hard and immature cervix, opening up to 2 cm, arrangement of head or occipital fossils.
- Cervical collapse, 8 cm dilatation, fetal occipital posture.
- Cervical folding, 9 cm dilation, posterior occipital fetus.
- Immature cervix, 5 cm dilation, falling out hand.
- Exfoliation of the cervix, 9 cm dilation, asynclityism.
- Cervical dilation, 8 cm dilation, forehead of the fetus.

Additional information:

- the possibility of adapting the model to the needs of a specific project. Please contact us or send us your specifications.
- the opportunity to purchase the entire set or individual modules
- individual modules are made of nedery and solid on an acrylic base



Clean Bleed™ Mat - Blood and Fluid Loss Simulator

Price inquiry: +48 605999769, kontakt@openmedis.pl

Product code: SM03678



The brand NEW Clean Bleed™ Mat has been designed to support all simulation scenarios. This product can be used with any brand of trainer where external blood or fluid loss is a key indicator and measure of the emergency being simulated. Easily set up in as little as 2 minutes, the patented Clean Bleed™ Mat allows for a mess-free blood loss simulation. Accurately mimic a range of blood loss rates for a wide variety of clinical scenarios, including: post-partum hemorrhaging, post-operative wounds, gunshot trauma and arterial bleeds. With adjustable flow capability, realistic scenarios can be created based on the actions of the trainee. The Clean Bleed™ Mat can be used in conjunction with any brand task trainers, full body manikins, or simulated patients, as well as being suitable for both indoor and outdoor use. For ease of use, this product comes with two lengths of tubing to allow for the fluid reservoir and pump to be placed further away from the training area. The internal mat can be removed, allowing trainees to weigh the blood or fluid loss as they would in a clinical setting. Our mats are specifically designed to allow easy clean up, including a 2-way pump system that ensures the fluid can be pumped back into the reservoir for reuse. This means a cost effective, mess-free way of using blood flow to aid in diagnosis. The blood used with this product now contains a new preservative which is approved for use by EU cosmetic regulations which means that, once diluted, it is safe for extended skin contact. We still recommend the use of gloves, as the pigments may stain skin and clothes. **SKILLS GAINED**

- Visual inspection and body assessment
- Identification and assessment of speed and color of bleed or flow
- Assessment of the speed and relevance of trainee interventions
- Quantifying blood loss (QBL)
- Ability to initiate rapid transfusion protocol if hemorrhage is suspected
- Use of PPE to protect against bodily fluids
- Assessment of the ongoing patient condition and impact of prior interventions on the patient

OVERVIEW

- Controllable flow rates of between 50ml and 600ml per minute for realistic blood loss simulation
- Blood loss can be measured either visually, or by weighing
- Simple and easy set up takes just 2 minutes
- Provides mess-free blood loss simulation training
- Suitable for use with simulated patients, task trainers and full body manikins
- Quick release bag allows trainees to replace the bag quickly, as they would in a real-life scenario
- Absorbent pad behaves as a chux pad would
- Housed in a carry bag

REALISM

- Unique sealed blood flow, heightens the realism for simulated scenarios
- Create high flow examples, such as: vaginal trauma (including post-partum hemorrhage or meconium fluid); abdominal, chest and neck trauma; loss of limb and post-operative bleeds
- Create low flow examples, such as: head or peripheral trauma; post-operative bleeds; meconium fluid

VERSATILITY

- The Clean Bleed™ Mat can be used in conjunction with simulated patients, task trainers or full-body



manikins

- Can be used to simulate a range of fluids
- Portable and durable for use in both indoors and outdoors
- Bag allows for the use of standard sized chux pads (60cm x 90cm)

CLEANING

- This product is latex free

CONTAINS

- Clean Bleed™ Bag (x2)
- Clean Bleed™ Absorbency Pad (x10)
- Clean Bleed™ Connectors Set
- Clean Bleed™ Fluid Reservoir
- Clean Bleed™ Carry Case
- Clean Bleed™ Pump
- Concentrated Venous Blood - Refill
- 1 Black Cap

Miniature pelvic model with a birthing doll

Price inquiry: +48 605999769, kontakt@openmedis.pl

Product code: SM02640



This detailed model of the female pelvis along with a birthing doll makes it possible to demonstrate the birthing process. The doll has a head with noticeable fontanels and a soft fabric body that can be easily guided through the birth canal. The perfect model for midwives and anyone who wants to explain and show the birthing process. Delivered in a fabric cover with a drawstring.

Model for breast care and massage

Price inquiry: +48 605999769, kontakt@openmedis.pl

Product code: SM01946



Due to the use of various special synthetic materials, this model is extremely realistic in appearance, touch, flexibility and mobility.

Application:

- Breast care and hygiene,
- Learning breast massage
- Education and support of women during lactation
- Demonstration of the use of the breast pump

Additional information:

- Dimensions: 29 x 44 x 14 cm,
- Weight: 2.2 kg

Fabric pelvis model

Price inquiry: +48 605999769, kontakt@openmedis.pl

Product code: SM02643



This pelvic model is made of an elastic fabric and shows the effect of different pelvic shapes on pregnancy and childbirth. Natural size.

Fits models M02641 and SM02642.

Fabric model of the fetus

Price inquiry: +48 605999769, kontakt@openmedis.pl

Product code: SM02641



This model is made of soft, durable fabric and represents a mature fetus. The body is elasticized to show all baby positions and postures.

Postpartum Hemorrhage Module - PROMPT Flex

Price inquiry: +48 605999769, kontakt@openmedis.pl

Product code: SM03665



This module is an optional add-on for the PROMPT Flex Standard or Advanced birthing simulator. It allows training in the management of post-partum bleeding, and offers a realistic simulation of an atonic and contracting uterus.

SKILLS GAINED

- Management of post-partum bleeding:
- Fundal massage
- Bi-manual compression
- Hemostatic balloon insertion and management
- Communication skills with mother when used with Simulated Patient
- Intramuscular injection
- Estimating blood loss

OVERVIEW

- Blood loss of up to 2 liters can be simulated
- Air bulbs are used to stimulate blood flow and control atonic state of the uterus

REALISM

- Atonic uterus can simulate contraction on fundal massage

VERSATILITY

- Can be quickly and easily fitted into the birthing mother to allow simulation of situations where bleeding occurs directly after delivery

CONTAINS

- Concentrated Venous Blood - Starter Pack
- PROMPT Flex PPH Blood Container
- PROMPT Flex PPH Uterus Assembly

WORKS WITH

- Birthing Simulator PROMPT Flex - Standard (Light Skin Tone)
- Birthing Simulator PROMPT Flex - Advanced (Light Skin Tone)

Compression Suture Uterus Module - PROMPT Flex

Price inquiry: +48 605999769, kontakt@openmedis.pl

Product code: SM03666



The Compression Suture Uterus module for the Birthing Simulator- PROMPT Flex is the ideal training solution for practicing all common types of Compression Suture (including B-Lynch, Hayman and Pereira) and ligating the uterine artery. Designed to be used with our Pre-Incised C-Section Skin, it can also be used with our mock blood to simulate vaginal bleeding.

Supplied as a pack of two, each uterus may be used up to 20 times each. The module is compatible with our Birthing Simulator - PROMPT Flex, which allows for the creation of multiple simulated labor training scenarios, and is an ideal training solution for all skills relating to both routine and emergency deliveries. The birthing simulator may be used for hybrid simulation as well as stand-alone bench top training. Built with versatility and realism in mind, the PROMPT Flex birthing simulator features a realistic pelvic floor, articulating thighs for the McRoberts procedure, a stretchable perineum, flexible birthing canal, and optional lower legs to simulate birthing in an all fours position. PROMPT flex product care is simple, and is Latex free. Other modules that work in conjunction with both PROMPT Flex Standard and Advanced include :

- Post-Partum Hemorrhage
- Cesarean-section
- Cervical Dilatation & Effacement
- Cervical Cerclage
- Lower Legs

SKILLS GAINED

- All common types of Compression Suture including:
- B-Lynch
- Hayman
- Pereira
- Dissection of the broad ligament
- Ligation of the uterine arteries

OVERVIEW

- Represents a postpartum uterus
- Includes uterine arteries, uterine veins and broad ligament

VERSATILITY

- Multiple uses when conducting a compression suture
- Supplied as a pack of 2, each uterus can be used up to 20 times

WORKS WITH

- Birthing Simulator PROMPT Flex - Standard (Light Skin Tone)



- Birthing Simulator PROMPT Flex - Advanced (Light Skin Tone)

Lower Legs - PROMPT Flex - Standard/Advanced

Price inquiry: +48 605999769, kontakt@openmedis.pl

Product code: SM03663



A pair of lower legs with knee joint interface for extended realism when running a shoulder dystocia drill or when using a simulated patient.

To be used with PROMPT Flex Wireless Force Monitoring and PROMPT Flex VERSATILITY

- Suitable for both PROMPT Flex Standard and Force Monitoring
- Easy to attach

CLEANING

- Skin surface washable with soap and water

ANATOMY

- Lower legs with knee joint (one left and one right)

WORKS WITH

- Birthing Simulator PROMPT Flex - Standard (Light Skin Tone)
- Birthing Simulator PROMPT Flex - Advanced (Light Skin Tone)

Pregnancy Profile Simulator

Price inquiry: +48 605999769, kontakt@openmedis.pl

Product code: SM03025



A simulator in the form of a vest. Reproduces the third trimester of pregnancy. This wearable maternity vest and curriculum help users understand the effects of pregnancy on the human body and its effects on the rest of everyday life.

This wearable pregnancy vest and curriculum helps users understand pregnancy's impact on the body as well as life goals, finances, relationships, and emotions. Users experience a 25- to 30-lb. weight gain, elevated body temperature, bladder pressure, fetal movement and difficulty breathing. Instructors use this educational tool with males and females in many programs, such as:

- Pregnancy prevention
- Family and consumer sciences
- Child development and health classes
- Childbirth
- Prenatal and parenting classes
- Health occupations
- Child care career courses

Contents

Includes:

- Pregnancy Profile Vest
- Rib constrictor belt containing two plastic balls
- Water bladder
- Bladder pressure weight bag
- Carrying case
- Embroidered t-shirt
- Curriculum
- Limited 2-year warranty



Forceps/Vacuum Delivery OB Manikin

Price inquiry: +48 605999769, kontakt@openmedis.pl

Product code: SM01456



The manikin used in Advanced Life Support in Obstetrics (ALSO) training programs. An anatomically correct pelvic model with both premature and full term fetuses to give trainees realistic practice in multiple techniques and to learn the procedure for emergency childbirth. The soft vinyl pelvis replicates the resistance encountered in a delivery requiring forceps or vacuum intervention. Comes with removable abdominal overlay, powder to make simulated blood, extra vulva, and soft carry bag. Forceps and vacuum extractor not included.

Size: 53 x 33 x 43 cm, weight: 7 kg

Birthing Simulator

Price inquiry: +48 605999769, kontakt@openmedis.pl

Product code: SM02368



Designed to provide a complete birthing experience before, during, and after delivery.

Simulator features include:

- full-size articulating female manikin
- intubatable airway with chest rise
- IV arm for meds/uids
- removable stomach cover
- practice Leopold maneuvers
- multiple foetal heart sounds
- automatic birthing system
- measure head descent and cervical dilation
- multiple placenta locations
- replaceable dilating cervixes
- one articulating birthing baby with placenta

Weight: 46 kg



Birthing Simulator PROMPT Flex - Advanced

Price inquiry: +48 605999769, kontakt@openmedis.pl

Product code: SM03661



The Advanced PROMPT Flex Birthing Simulator is an anatomically correct representation of a mother and baby. Its modular design allows for multiple training scenarios, and it forms the base for the complete PROMPT Flex range of birthing modules. This birthing trainer offers a hybrid solution to your training needs. Quick and easy to set up straight from the box you are able to: Use as a stand alone model for group learning Secure to a bench top or bed for a more realistic bedside scenario to improve professional-patient communications In addition to the functionality of the PROMPT Flex?Standard model, this version of the PROMPT has a Bluetooth enabled Force Monitoring baby. During labor there is a threshold of force that can result in brachial plexus injury during shoulder dystocia. The Force Monitoring Baby measures the force applied by trainees during drills. In conjunction with the Limbs & Things Birthing Simulator Software, instructors have the ability to record actions and interventions made, and the time to deliver the baby. A simple meter mode in the software allows trainees valuable practice in applying force to the baby outside of the context of a scenario - enabling them to become familiar with the feel of both safe and excessive force before encountering a real obstetric emergency. **SKILLS GAINED**

- Training and practice in the following types of birth:

Normal

Vaginal breech

Shoulder dystocia

Vaginal assisted (forceps and vacuum devices)

Third stage of labor

- Cord prolapse
- Urinary catheter placement
- IM injection
- Communication and teamwork skills

OVERVIEW

- Bluetooth enabled baby for force monitoring during shoulder dystocia drills
- Free, downloadable Birthing Simulator software allows trainees' actions and interventions to be recorded during drills, with time to deliver baby
- PDFs of trainee drills can be saved and printed for debriefing
- Software compatible with Windows, PC, iOS and Android devices
- Software scenarios can be modified or created from scratch to fit with your own language and procedures

REALISM

- Suitable for use with Simulated/Standardized Patient
- Realistic pelvic floor
- Articulating thighs for McRobert's procedure
- Stretchable perineum
- Soft, flexible birthing canal

VERSATILITY



- **Additional modules available to extend training:**

Post Partum Hemorrhage management

C-section

Cervical Dilatation and Effacement

- Optional lower legs for all fours position
- Supports bench top training or hybrid simulation

CLEANING

- Skin washable with soap and water

SAFETY

- This product is latex free

ANATOMY

- Birth canal and cervix
- Ischial spines and pubic bone
- Gynaecoid pelvis
- Articulating thighs
- Fully articulated baby with clavicles, fontanelles, flexible head, detachable umbilical cord and placenta

CONTAINS

- Birthing Mother - PROMPT Flex - Standard/Advanced
- Baby - PROMPT Flex - Advanced
- Placenta - PROMPT Flex - Standard/Advanced
- Abdomen - PROMPT Flex - Standard/Advanced
- Perineum & Birth Canal - PROMPT Flex - Standard/Advanced
- Wheeled Carry Case
- SimMom & PROMPT Birthing Lubricant (500ml)

WORKS WITH

- Birthing Mother - PROMPT Flex - Standard/Advanced
- Baby - PROMPT Flex - Standard
- Placenta - PROMPT Flex - Standard/Advanced
- Abdomen - PROMPT Flex - Standard/Advanced
- Perineum & Birth Canal - PROMPT Flex - Standard/Advanced
- Cervix - PROMPT Flex - Standard/Advanced (x2)
- Pelvic Ring - PROMPT Flex - Standard/Advanced
- Wheeled Carry Case

Birthing Simulator PROMPT Flex - Standard

Price inquiry: +48 605999769, kontakt@openmedis.pl

Product code: SM03660



The PROMPT Flex Standard Birthing Simulator has a modular design, offering a truly versatile and flexible platform. This manikin allows for multiple scenarios in labor and delivery simulation training. An ideal training solution for all skills relating to both routine and non-routine deliveries, as well as being used for stand-alone bench training or with a simulated patient. Standard model PROMPT Flex birthing simulators come with the Enhanced PROMPT Flex Standard Baby, representing a full-term infant. Used with the PROMPT Flex Birthing Mother, also included in this training set, you can simulate normal and difficult births. The PROMPT Flex Baby's improved shoulder and hip joints further enhance the realism in difficult birthing situations, such as shoulder dystocia and breech births. Additional products are available to extend training scenarios in the classroom:

- Cervical Cerclage
- Cervical Dilatation & Effacement (CDE)
- Enhanced Cesarean Section (ECSM)
- Maternal Hemorrhage Simulator
- Postpartum Hemorrhage
- Lower Legs

SKILLS GAINED

- Training and practice in the following types of birth:

Normal

Vaginal breech

Shoulder dystocia

Vaginal assisted (forceps and vacuum devices)

Third stage of labor

- Cord prolapse
- Urinary catheter placement
- IM injection
- Communication and teamwork skills

OVERVIEW

- As part of the PROMPT Flex birthing range, this set can be used with the following modules:

Postpartum Hemorrhage (PPH)

Enhanced C-Section

Cervical Dilatation & Effacement (CD&E)

Cervical Cerclage

Lower Legs

Maternal Hemorrhage Simulator

- Baby has improved shoulder and hip joints
- Comes with wheeled carry case for safe storage and transportation

REALISM

- Realistic pelvic floor
- Suitable for use with a Simulated Patient
- Improved Baby model with bend at the thoraco-lumbar region

VERSATILITY **Birth Mother:**

- Articulated thighs help to demonstrate Gaskin and McRobert's procedures
- Handle on the base of the mannikin for operator use during labor simulation
- Strap fastenings to secure PROMPT simulator to a bed or bench during training
- Can be used with additional modules to extend training simulations

Baby:

- Baby has a bend at the thoraco-lumbar region
- Improved articulation of the joints offers enhanced realism for difficult birthing scenarios, such as shoulder dystocia

CLEANING

- Clean lubricant from all of the mother and baby surfaces with a warm damp cloth
- Allow components to dry thoroughly before storing away

SAFETY

- Use recommended lubricant and simulated blood, other products may weaken or damage your simulator
- Always lubricate the cervix, birth canal and baby before each birthing simulation to avoid damaging the skin
- This product is latex free

ANATOMY **Anatomy of the PROMPT birthing mother:**

- Articulated thighs
- Perineum, birthing canal, and cervix
- Pubic bone and gynaecoid pelvis

Anatomy of the PROMPT Baby:

- Clavicles
- Suture lines and fontanelles
- Umbilical cord and placenta

CONTAINS

- Birthing Mother - PROMPT Flex - Standard/Advanced
- Baby - PROMPT Flex - Standard
- Placenta - PROMPT Flex - Standard/Advanced
- Abdomen - PROMPT Flex - Standard/Advanced
- Perineum & Birth Canal - PROMPT Flex - Standard/Advanced
- Wheeled Carry Case
- SimMom & PROMPT Birthing Lubricant (500ml)

WORKS WITH

- Birthing Mother - PROMPT Flex - Standard/Advanced
- Baby - PROMPT Flex - Standard
- Placenta - PROMPT Flex - Standard/Advanced
- Abdomen - PROMPT Flex - Standard/Advanced
- Perineum & Birth Canal - PROMPT Flex - Standard/Advanced
- Cervix - PROMPT Flex - Standard/Advanced (x2)
- Pelvic Ring - PROMPT Flex - Standard/Advanced
- Wheeled Carry Case



Automatic Childbirth Skills Trainer Torso

Price inquiry: +48 605999769, kontakt@openmedis.pl

Product code: SM02410



An economical simulator designed to practice all aspects of labor. This full-size female upper and lower torso features a removable abdominal cover and one baby born with umbilical cord and placenta.

Main advantages:

- The fetus has movable joints, placenta and umbilical cord
- Leopold maneuver possible thanks to an additional cover
- Possibility of monitoring TOCO and FHR thanks to the optional Virtual Monitor (Option additionally payable)
- The pelvis has major landmarks
- Soft and stretchy birth canal and cervix, realistic cervical dilatation
- Programmable fetal heart tones Start, halt and reschedule labor with one touch in the software
- Programmable time of delivery and control of fetal drop.
- Possibility of difficult and assisted deliveries (vacuum lift and forceps)
- Possibility to practice the procedure during gluteal delivery
- Possibility to practice the management of shoulder dystocia: visible head retraction, suprapubic compressions and McRoberts and Zavanelli maneuver
- Arealistically reproduced bearing with detachable fragments
- Possibility of various placement of the bearing
- Measuring the head's descent and cervical dilation

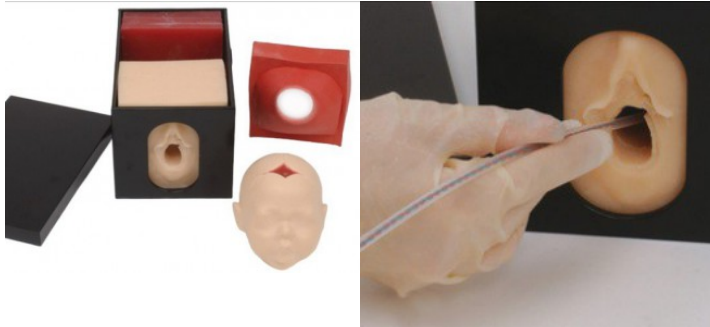
The set Included:

- adult woman torso,
- realistic placenta,
- umbilical cord,
- software tablet,
- 2 crotch incision sewing inserts,
- lubricant,
- bag,
- instruction manual.

Internal Fetal Monitor Trainer

Price inquiry: +48 605999769, kontakt@openmedis.pl

Product code: SM02017



An ideal teaching tool, this lifelike, 3-D trainer provides realistic simulation for proper insertion of an internal electrode for fetal heart monitoring. The trainer includes a fetal head with palpable, realistic fontanels and suture lines, a lower uterine segment, and one cervical dilation model depicting 4 cm of dilation. Components fit into a durable plastic case that facilitates visualization and easy removal for cleaning.

Dimensions: 14x13x21,5 cm

Abdominal palpation model set

Price inquiry: +48 605999769, kontakt@openmedis.pl

Product code: SM02016



The Abdominal Palpation Model includes a fetal model that flexes, facilitating all presentations and positions. Dimensions: 48 x 29 x 24 cm

The fetal model also features:

- A weighted body
- Movable limbs
- Firm buttocks
- A head with palpable anterior and posterior fontanel

The fetal model and the included pelvis model rest within the abdominal portion of the Abdominal Palpation Model. The abdomen is a padded cloth attached by Velcro to the base, which allows for easy removal and replacement of the fetal model to visualize and change fetal positions.

The model set also includes:

- A gel pad that creates a cushion over the fetal model and provides a realistic, lifelike feel
- 12 movable blue gel packs to simulate amniotic fluid
- A practice guide with suggestions for how to use the model
- A convenient carrying case

Fetal Monitoring and Labor Progress Model Set

Price inquiry: +48 605999769, kontakt@openmedis.pl

Product code: SM02018



The fetal monitoring and labor progress model set provides students with a realistic simulation of vaginal examinations, labor progress and insertion of the intrauterine pressure catheter. This fetal and labor model set is an excellent tool for teaching nursing, medical, or midwifery students.

This lifelike 3D model includes:

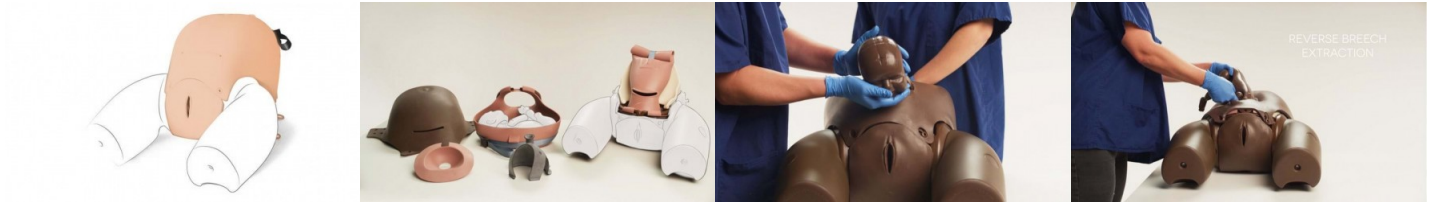
- Fetal head
- Lower uterine segment
- Cervix
- 4 Interchangeable cervical dilation models (1,3,4,8cm)

The fetal monitoring and labor progress model set is a great addition to any lesson about the human birth process.

Enhanced Caesarean Section Module (ECSM) - PROMPT Flex

Price inquiry: +48 605999769, kontakt@openmedis.pl

Product code: SM03662



The Limbs & Things Enhanced C-section module for the Birthing Simulator - PROMPT Flex is the ideal platform for practising the necessary skills required when performing both routine and complex caesarean section. Trainees can have exposure to delivering a difficult baby such as an impacted fetal head (IFH), or a transverse lie.

A pre-incised abdomen allows for repeated delivery practice to help improve confidence and familiarity of manoeuvres, including the Patwardhan's technique, reverse breech extraction, and the use of a fetal pillow. Designed with haptics and anatomic realism in mind, the module features realistic abdominal skin that has realistic appearance (including a fat layer and feel of an at-term abdomen), a realistic feel uterus interior during delivery, and the head and shoulders present are at a realistic level in relation to the uterine incision. The module is to be used in conjunction with our Birthing Simulator - PROMPT Flex Standard and Advanced, which allows for the creation of multiple simulated labor training scenarios, and is an ideal training solution for all skills relating to both routine and emergency deliveries. The birthing simulator may be used for hybrid simulation as well as stand-alone bench top training. Other modules that work in conjunction with both PROMPT Flex Standard and Advanced include:

- Post-Partum Hemorrhage
- Cervical Dilatation & Effacement
- Compression Suture Uterus
- Cervical Cerclage Lower Legs

SKILLS GAINED

- Cephalic and breech delivery
 - Application of fundal pressure
 - C-section at full dilation
 - Delivery of a baby with an impacted head:
- Abdominal cephalic disimpaction
 - Vaginal disimpaction methods (vaginal up push)
 - Reverse breech extraction
 - Patwardhan's techniques
 - Use of balloon disimpacting device (fetal pillow)
- Delivery of a transverse lie baby
 - Instrument assisted C-section delivery
 - Delivery of the placenta
 - Teamwork and human factors training in emergency C-section

OVERVIEW

- Uterus holds baby firmly in position for cephalic, breech and transverse presentations
- Fundal pressure can be applied to aid delivery of the baby for IFH manoeuvres
- Pre-incised skin allows easy repeat delivery practice



- Realistically mimics the restrictive space of the pelvic inlet for IFH manoeuvres
- Accommodates retraction using metal, plastic or rubber retractors

REALISM

- Abdominal skin has realistic appearance, fat layer and feel of at-term abdomen
- Realistic feel of uterus interior during delivery
- Head and shoulders present at realistic level in relation to the uterine incision

VERSATILITY

- Allows for training in routine and complex caesarean section at full dilation

SAFETY

- This product is latex free

CONTAINS

- Foam Uterus Support for PROMPT Flex C-Section Module
- Perineum for CSM and CD&E Modules - PROMPT Flex
- Cervix for PROMPT Flex Enhanced Cesarean Section Module
- Pre-incised Delivery Skin for ECSM - PROMPT Flex (Light Skin Tone)
- Uterus for PROMPT Flex Enhanced Cesarean Section Module (Light Skin Tone)
- Impacted Fetal Head Uterus for ECSM - PROMPT Flex (Light Skin Tone)
- Pelvic Floor for ECSM

WORKS WITH

- Foam Uterus Support for PROMPT Flex C-Section Module
- Impacted Fetal Head Uterus for ECSM - PROMPT Flex (Dark Skin Tone)
- Pre-incised Delivery Skin for ECSM - PROMPT Flex (Light Skin Tone)
- Perineum for CSM and CD&E Modules - PROMPT Flex
- Uterus for PROMPT Flex Enhanced Cesarean Section Module (Light Skin Tone)
- Cervix for PROMPT Flex Enhanced Cesarean Section Module
- Pelvic Floor for ECSM

Advanced Childbirth Simulator

Price inquiry: +48 605999769, kontakt@openmedis.pl

Product code: SM02369



This versatile childbirth simulator is used worldwide by healthcare educators. It not only provides an excellent simulation of the normal delivery experience for the student and educator, but also provides instruction in abnormal and multiple deliveries.

It may be used for demonstration of the following obstetric procedures:

- Normal vaginal delivery
- Complete, frank, and footling breech birth
- C-section delivery
- Ritgen's maneuver
- Episiotomy
- Vertex presentation
- Intrauterine manipulation
- Vertex/vertex, vertex/breech, breech/vertex, or breech/breech presentation in multiple birth
- Prolapse of umbilical cord
- Demonstration of placenta previa: total, partial, and marginal
- Normal delivery of umbilical cord and placenta
- Palpation of fetal fontanelles
- Simulated suction of nose and mouth

Features/Scope of Delivery:

- Removable diaphragm end plate for manual positioning of fetal baby/babies
- Removable stomach cover for positioning fetus
- Life-size pelvic cavity with major anatomic landmarks
- Hand-painted outline of the bony pelvis
- Three soft vulval inserts for episiotomy exercises
- One baby boy and one baby girl, each with umbilical cord and placenta
- Anatomically accurate backbone and fontanelles on fetal baby/babies
- One skin-tone stomach cover
- One clear stomach cover
- Four extra umbilical cords
- Two umbilical clamps
- Talcum powder
- Instruction manual
- Soft carrying bag

Postpartum Hemorrhage Kit - PROMPT Flex

Price inquiry: +48 605999769, kontakt@openmedis.pl

Product code: SM03667



To be used in conjunction with the Birthing Simulators - PROMPT Flex Standard or Advanced, this add-on kit is the ideal simulated training solution for the management of postpartum bleeding and care, including performing a compression suture and ligating the uterine artery.

Containing our Post Partum Hemorrhage and Compression Suture modules, as well as a Pre-Incised delivery skin for CSM, this kit is optimized for delivering the following skills to trainees:

- Management of postpartum bleeding:
- Fundal massage
- Bi-manual compression
- Hemostatic balloon insertion and management
- Estimating blood loss
- Compression suture (including B-Lynch, Hayman and Pereira)
- Dissection of broad ligament
- Ligation of uterine arteries
- Professional-to-patient communication skills

Built with versatility and realism in mind, the PROMPT Flex birthing simulator features a realistic pelvic floor, articulating thighs for the McRoberts procedure, a stretchable perineum, flexible birthing canal, and optional lower legs to simulate birthing in an all fours position. PROMPT flex product care is simple, and is Latex free. For extended use, additional modules include:

- Cesarean-section
- Cervical Dilatation & Effacement
- Compression Suture Uterus
- Cervical Cerclage
- Lower Legs

OVERVIEW

- Blood loss of up to 2 liters can be simulated
- Air bulbs are used to simulate blood flow and control atonic state of uterus
- Multiple uses when conducting the compression suture

CONTAINS

- Postpartum Hemorrhage Module - PROMPT Flex
- Compression Suture Uterus Module - PROMPT Flex
- Pre-incised Delivery Skin for CSM - PROMPT Flex

WORKS WITH

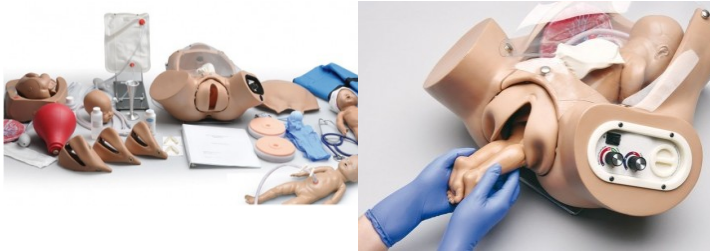


- Birthing Simulator PROMPT Flex - Standard (Light Skin Tone)
- Birthing Simulator PROMPT Flex - Advanced (Light Skin Tone)

Labor simulation training a birth

Price inquiry: +48 605999769, kontakt@openmedis.pl

Product code: SM02366



Versatile, lightweight birthing torso allows you to simulate every stage of the birthing process. Simulator is ideal for practicing Leopold maneuvers. Practice vaginal breech deliveries and free the legs using the Pinard maneuver. Includes torso, birthing baby, and newborn baby.

Features:

- Audible maternal and newborn heart sounds from 0-220 BPM
- Audible newborn cries, grunting, and stridor
- Bladder catheterization with variable urinary flow — use conventional urinary bladder to reduce bladder size
- Clamp placement and umbilical cutting
- Delivery of placenta — position placenta to simulate placenta previa
- Fetal palpation through transparent or abdominal cover
- Insertion of medication through rectum
- Use blood concentrate to simulate postpartum bleeding
- Uterine massage
- Vacuum assisted or forceps deliveries with or without abdominal cover
- Vertex or breech deliveries

Birthing torso includes:

- Blood collection stand with squeeze bulb to regulate pressure
- Directions for use
- Distensible cervixes (3)
- Midwifery gown with snaps
- Nonsterile urinary catheter (not for human use)
- Non-latex gloves (2 pairs)
- Placentas with removable fragments (2)
- Postpartum hemorrhage fluid
- Silicone lubricant
- Requires 4 “AA” batteries (not included)
- Simulated blood concentrate
- Simulated urine concentrate
- Stethoscopes — 1 conventional and 1 Pinard
- Storage bag
- Talcum powder
- Suction bulb

Birthing baby includes:

- Connectors (2)
- Placentas with removable fragments (2)
- Skull with fontanelles



- Soft face skin that fits over head for vacuum or forceps delivery
- Umbilical clips (2)
- Umbilical cords (4)

Newborn baby features:

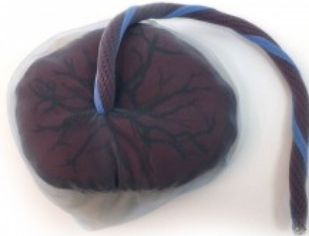
- Head cap to minimize hypothermia
- Squeeze bulb for operating umbilical pulse
- Umbilical catheterization

Weight: 18 kg

Fabric placenta and umbilical cord

Price inquiry: +48 605999769, kontakt@openmedis.pl

Product code: SM02642



The model allows you to present the fetus inside the amniotic sac. A taut umbilical cord clearly depicts the vein and arteries. Both the amniotic and chorionic membranes are accurately reproduced in two colors. Fits model SM02641.