



An advanced dental hygiene simulator

Price inquiry: +48 605999769, kontakt@openmedis.pl

Product code: SM03826



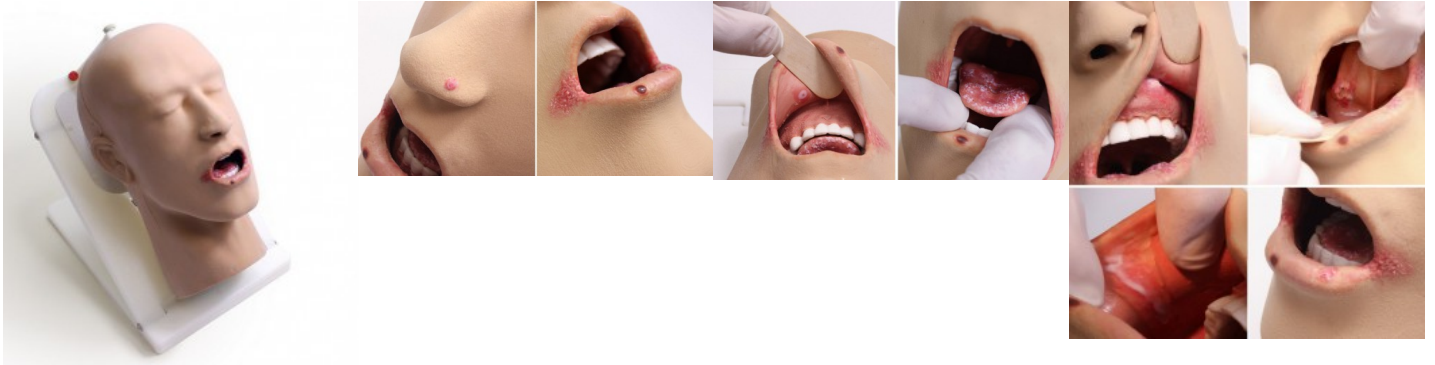
An advanced dental hygiene simulator for training dental technician assistants and dental prophylaxis assistants. The unit includes the DENTOFORM® model for technique training, an aluminal skull and a soft Plassein head. Due to the all-round movable ball joint, the head can be brought into many different positions. With attachment for the chair.

Weight: 2.8 kg

Advanced Dental Care Simulator

Price inquiry: +48 605999769, kontakt@openmedis.pl

Product code: SM01899



A realistic oral / dental hygiene phantom in the form of an adult male head with various oral pathologies. The product is intended to identify pathologies, it is not a surgical and procedural model .

Main features:

- It presents the key anatomical features of the lips, mouth and its surroundings.
- It has the possibility of positioning the head
- Movable jaw
- Bony skull
- Teeth
- Flexible mimetic-tissue mucous membranes
- Phantom has very different pathologies of the oral cavity and its surroundings

Pathologies include:

- Angular cheilitis,
- Periapical abscess,
- Periodontal abscess,
- Candidiasis,
- Canker sore,
- Herpatic lesion,
- Linea alba,
- Melanoma of lip,
- Basal cell on nose,
- Oral cancer.

Additional information:

- The phatom is used to identify pathology, it is not a procedural model
- The product is not intended for use with water or medicines