

Casualty Simulation Set EMT

Price inquiry: +48 605999769, kontakt@openmedis.pl

Product code: SM01299



This complex EMT (Emergency Medical Training) kit uses components applied to human and manikin patients to get the widest variety of training situations possible. Wounds strapped on, stuck on, created from wax and made to bleed challenge both the volunteer and the professional in areas of burns, lacerations, fractures of arms and legs and amputations; a good kit to simulate community disasters like bus accidents, or building explosions.

The kit is supplied in a storage case and includes: Bleeding wounds (complete with reservoir bags with pump assembly):

- 1 jaw wound,
- 1 abdominal wound with protruding intestines,
- 1 sucking wound of chest,
- 2 compound fractures of humerus,
- 2 compound fractures of femur,
- 2 compound fractures of tibia,
- 1 laceration of the forehead,
- 1 open amputation,
- 2 gunshot wound of palm.

Non-bleeding wounds:

- 36 assorted stick-on lacerations and open fracture wounds,
- 1 phosphorous burn of the hand,
- 1 face in shock,
- 2nd, & 3rd degree burn of the face,
- 2nd, & 3rd degree burn of the chest,
- 2nd, & 3rd degree burn of the back,
- 2nd, & 3rd degree burn of the hand,
- 2nd, & 3rd degree burn of the forearm.

Make-up accessories:

- 5x blood simulation,
- 3x coagulant blood,
- glass simulation,
- grease paints,
- modelling past,
- simulation wax and much more.

Size: 61 x 23 x 46 cm, weight: 14.6 kg



Emergency lower leg

Price inquiry: +48 605999769, kontakt@openmedis.pl

Product code: SM03450



Model of a human leg with deep tissue injury, caused by an explosive (blind grenade).

Main advantages:

- The vessel system can be connected with a Luer-lock connector.
- The whole model is made of strong silicone material and can be used for tamponade treatment of the wounds.

Emergency leg

Price inquiry: +48 605999769, kontakt@openmedis.pl

Product code: SM03451



Complete, life size leg from hip to toe, with explosion injury (blend grenade) on the lower leg and a shot right through the upper leg.

Main advantages:

- Both wounds do have a pumping mechanism and can be used for tamponade treatment.
- On the upper leg additionally training of tourniquet use is possible.
- Both wounds can bleed independently so the situation can be adjusted to your training needs.

Leather glue, 225g

Price inquiry: +48 605999769, kontakt@openmedis.pl

Product code: SM02673



Special glue for attaching silicone models (e.g. wounds) to the skin.

Wound moulage "Cut"

Price inquiry: +48 605999769, kontakt@openmedis.pl

Product code: SM02820



This moulage shows a cut of about 1cm depth. The moulage adheres on human skin or a manikin, however, for longer use or for improved adherence additional skin glue is available. Supplied in storage box. Size of the moulage: approx. 12 x 8 x 1.3 cm

Wound moulage "cut with glass fragment"

Price inquiry: +48 605999769, kontakt@openmedis.pl

Product code: SM02819



This Moulage shows a cut caused by a glass fragment while the fragment is still inside the wound. The glass fragment looks realistic, but is made of soft material to avoid any risk of injury. The moulage adheres to skin or a manikin without glue, however, for longer training or improved adhesion a skin adhesive (optional) can be used. Supplied with storage box. Size of the moulage: approx. 11 x 7 x 1 cm

Wound moulage laceration, large with bleeding function

Price inquiry: +48 605999769, kontakt@openmedis.pl

Product code: SM02831



This moulage shows large lacerations. With line for bleeding function. The moulage adheres to skin or a manikin. For longer training or improved adherence an optional glue is available.

Supplied with storage box. **Size of the moulage:** approx. 28.5 x 15 x 2.3 cm

Wound moulage scalding

Price inquiry: +48 605999769, kontakt@openmedis.pl

Product code: SM02838



This moulage shows scalding. The moulage adheres to skin or a manikin. For longer training or improved adherence optional glue is available.

Supplied in storage box. Size of the moulage: approx. 28.3 x 14.5 x 0.8 cm

Wound moulage 2nd degree burn

Price inquiry: +48 605999769, kontakt@openmedis.pl

Product code: SM02836

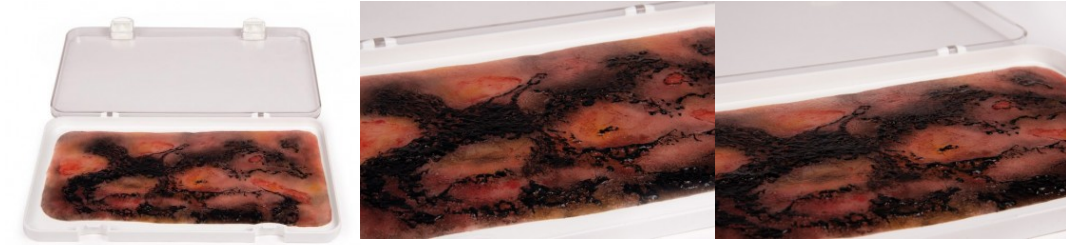


This moulage shows a 2nd degree burn with blisters. The moulage adheres to skin or a manikin. For longer training or improved adherence optional glue is available. Supplied in storage box. Size of the moulage: approx. 28 x 14.5 x 1 cm

Wound moulage 3rd degree burn

Price inquiry: +48 605999769, kontakt@openmedis.pl

Product code: SM02837



This moulage shows a 3rd degree burn with burned skin layer. The moulage adheres to skin or a manikin. For longer training or improved adherence optional glue is available.

Supplied in storage box. Size of the moulage: approx. 28.5 x 14.8 x 0.6 cm

Wound moulage cut, large with bleeding function

Price inquiry: +48 605999769, kontakt@openmedis.pl

Product code: SM02830



This wound moulage shows a large, deep cut. With line for bleeding function. The moulage adheres to skin or a manikin. For longer training or improved adherence an optional glue is available.

Supplied with storage box.

Size of the moulage: approx. 28 x 14.5 x 1.8 cm

Wound moulage scalding

Price inquiry: +48 605999769, kontakt@openmedis.pl

Product code: SM02829



This wound moulage shows scalding. The moulage adheres to skin or a manikin. For longer training or improved adherence an optional glue is available.

Supplied with storage box. Size of the moulage: approx. 17 x 9.5 x 0.5 cm

Wound moulage 2nd degree burn

Price inquiry: +48 605999769, kontakt@openmedis.pl

Product code: SM02824



This moulage shows a 2nd degree burn with blisters. The moulage adheres on skin or a manikin, for longer training or improved adherence an optional skin glue is available.

Supplied with storage box. Size of the moulage: approx. 16 x 9.2 x 1 cm

Wound moulage 3rd degree burn

Price inquiry: +48 605999769, kontakt@openmedis.pl

Product code: SM02825



This wound moulage shows a 3rd degree burn with burned skin layer. The moulage adheres to skin or a manikin. For longer training or improved adherence an optional glue is available. Supplied with storage box. Size of the moulage: approx. 16.7 x 9.5 x 0.5 cm

Wound moulage cut broken bottle

Price inquiry: +48 605999769, kontakt@openmedis.pl

Product code: SM02826



This moulage shows a cut by a broken bottle. The moulage adheres to skin or a manikin. For longer training or improved adherence an optional glue is available.

Supplied with storage box. Size of the moulage: approx. 10.5 x 7.2 x 1 cm

Wound moulage wound packing

Price inquiry: +48 605999769, kontakt@openmedis.pl

Product code: SM02840



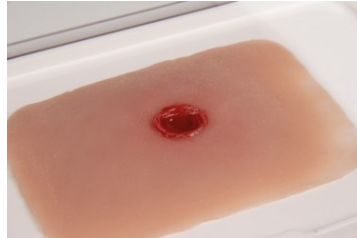
This moulage shows a large wound with severe bleeding for training of wound packing. With line for bleeding function. The moulage adheres to skin or a manikin. For longer training or improved adherence an optional glue is available.

Supplied with storage box. Size of the moulage: approx. 18.5 x 14 x 4 cm

Wound moulage bullet entrance hole

Price inquiry: +48 605999769, kontakt@openmedis.pl

Product code: SM02827



This wound moulage shows an entrance hole of a bullet. The moulage adheres to skin or a manikin. For longer training or improved adherence optional glue is available.

Supplied with storage box. Size of the moulage: approx. 11 x 7.5 x 0.8 cm

Wound moulage bullet exit hole

Price inquiry: +48 605999769, kontakt@openmedis.pl

Product code: SM02828



This wound moulage shows an exit hole of a bullet. The moulage adheres to skin or a manikin. For longer training or improved adherence optional glue is available.

Supplied with storage box. **Size of the moulage:** approx. 10.8 x 7 x 1.2 cm

Wound moulage bullet hole, leg with bleeding function

Price inquiry: +48 605999769, kontakt@openmedis.pl

Product code: SM02835



This moulage shows a bullet entrance and exit wound. The moulage can be wrapped around the leg to match the two holes. With line for bleeding function. The moulage adheres to skin or a manikin. For longer training or improved adherence optional glue is available.

Supplied in storage box. Size of the moulage: approx. 29 x 14.5 x 1.5 cm

Wound moulage bullet wound, arm with bleeding function

Price inquiry: +48 605999769, kontakt@openmedis.pl

Product code: SM02834



This moulage shows a bullet entrance and exit wound. The moulage can be wrapped around the arm to match the two holes. With line for bleeding function. The moulage adheres to skin or a manikin. For longer training or improved adherence optional glue is available.

Supplied in storage box. Size of the moulage: approx. 28.5 x 15 x 1.5 cm

Wound moulage "laceration"

Price inquiry: +48 605999769, kontakt@openmedis.pl

Product code: SM02821



This moulage shows a laceration with an uneven wound edge. The moulage is self adherent on skin and on manikins. However, for longer training or improved adherence an optional glue is available.

Supplied with storage box. Size of the moulage: approx. 11.5 x 7.8 x 1.1 cm

Wound moulage "human bite"

Price inquiry: +48 605999769, kontakt@openmedis.pl

Product code: SM02823



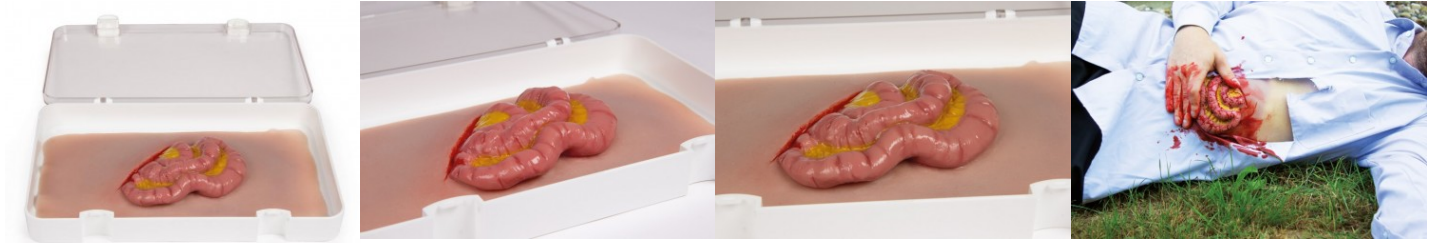
This wound moulage shows a bite by a human. The moulage adheres to skin or a manikin, however, for longer training or improved adherence an optional glue is available.

Supplied with storage box. Size of the moulage: approx. 11 x 8 x 1 cm

Wound moulage protruding small intestines

Price inquiry: +48 605999769, kontakt@openmedis.pl

Product code: SM02841



This moulage shows protruding small intestines after injury of the abdominal wall . The moulage adheres to skin or a manikin. For longer training or improved adherence optional glue is available.

Supplied in storage box. Size of the moulage: approx. 28.5 x 14.7 x 3.5 cm

Wound moulage protrusion of large intestines

Price inquiry: +48 605999769, kontakt@openmedis.pl

Product code: SM02839



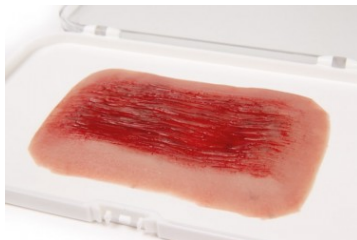
This moulage shows protruding large intestines after injury of the abdominal wall . The moulage adheres to skin or a manikin. For longer training or improved adherence optional glue is available.

Supplied in storage box. Size of the moulage: approx. 28.5 x 14.7 x 4.3 cm

Wound model - scratch

Price inquiry: +48 605999769, kontakt@openmedis.pl

Product code: SM02672



This model shows a scratch / abrasion. It is possible to add impurities (sand, small stones) and blood.

The model adheres to simulated patients or mannequins, but can also be attached to the skin with special glue to ensure longer exercise. Delivery incl. Storage box. Wound size: approx. 11 x 7.5 x 0.7 cm

Wound moulage "open fracture"

Price inquiry: +48 605999769, kontakt@openmedis.pl

Product code: SM02822



This wound moulage shows an open fracture of a smaller limb bone, e.g. lower arm. The moulage adheres to skin or a manikin, however, for longer training or improved adherence an optional skin glue is available.

Supplied with storage box. Size of the moulage: approx. 12.5 x 7.6 x 1.7 cm

Wound moulage open fracture, leg with bleeding function

Price inquiry: +48 605999769, kontakt@openmedis.pl

Product code: SM02833



This moulage shows an open fracture of a bigger limb bone (e.g. femur). With line for bleeding function. The moulage adheres to skin or a manikin. For longer training or improved adherence optional glue is available.

Supplied in storage box. Size of the moulage: approx. 28.5 x 14.7 x 3.2 cm

Wound moulage open fracture, arm bone with bleeding function

Price inquiry: +48 605999769, kontakt@openmedis.pl

Product code: SM02832



This moulage shows an open fracture of a smaller limb bone. With line for bleeding function. The moulage adheres to skin or a manikin. For longer training or improved adherence an optional glue is available.

Supplied with storage box. Size of the moulage: approx. 28.5 x 15 x 3 cm

Price inquiry: +48 605999769, kontakt@openmedis.pl

Product code: SM02658



With this wound simulation kit, you can design incredibly realistic First Aid training wounds in minutes without knowing makeup techniques. The molds included in the set can be filled with any wound simulation paste. After the paste has dried, the filled molds are simply pressed into the desired position, the wounds adhere independently and without glue to the skin or to the training dummies. Just apply the included blood to the sealed wound and the wound is ready. If you want it to be even more realistic, you can achieve an even more real effect by applying "meat" paste to the wound. Stuck wounds can be treated several times, just remove the dressing, wash the wound and apply fresh blood. After training, the wound can be easily removed and disposed of. Consumables such as wound simulation paste, fixative powder, "meat" paste, and blood are sold separately. Includes cuts, abrasions and lacerations. Included materials include wound simulation paste, fixative powder, "meat" paste, artificial blood, isopropanol, paste spatula, and blood swabs. The perfect set for school medical services or youth emergency departments or fire brigades.



Manual blood pumping system with Reservoir - Backpack

Price inquiry: +48 605999769, kontakt@openmedis.pl

Product code: SM02843



This blood supply module fits perfectly to our wound moulages with bleeding function. The reservoir backpack holds up to 3 liters of artificial blood which can be pumped into up to 4 wounds simultaneously. Because of the backpack design the blood supply is not obvious to see and integrates perfectly into your training scenario. The reservoir bag has an extra big opening to allow easy emptying and cleaning.

Wound Moulages - Set Standard

Price inquiry: +48 605999769, kontakt@openmedis.pl

Product code: SM03698



This practical set allows you to quickly apply wounds to dolls or actors without any make-up effort.

The wounds adhere independently and can be easily removed again. Disinfectant, fake blood and similar can be used without hesitation. Of course, the wounds are easy to clean and can be used again and again.

The following wounds are included:

- laceration appr.3cm, moulage 6x4cm
- laceration appr.2,5cm, moulage 5x4cm
- laceration appr.2x3cm, moulage 5x3,5cm
- laceration appr.5,5cm, moulage 6,5x3cm
- laceration appr.3cm, moulage 4,5x3,5cm
- laceration appr.3x1,5cm, moulage 6x4cm
- laceration appr.4cm, moulage 5x2,5cm
- gunshot wound appr.3x2cm, moulage 5x6cm

Supplied in a storage case.



SIMULATORS FOR TRAINING IN WOUND MANAGEMENT

Price inquiry: +48 605999769, kontakt@openmedis.pl

Product code: SM03855



Learn how to conduct wound treatment (WNT) realistic simulators.

Through customizable models, it is possible to demonstrate and practice cleaning, debridement, application of simple and vacuum dressings, as well as to choose the best indication for plastic surgeries. **PRODUCTS** WNT-1 Wound Trainer - Face and Cranial Region WNT-2 Wound Trainer - Chest (multiple) WNT-3 Wound Trainer - Hand and arm WNT-4 Wound Trainer - Back, decubitus and flap ulcers WNT-5 Wound Trainer - Infected Foot Ulcers WNT-6 Wound Trainer - Leg (possible immobilization) WNT-7 Wound Trainer - Diabetic foot WNT-8 Wound Simulator with portable base (customizable)

Artificial glass for splinter simulation

Price inquiry: +48 605999769, kontakt@openmedis.pl

Product code: SM02842



This rubber-like material breaks like glass and forms realistic looking splinters without the danger of injuries. The material can be broken in different sizes depending on your need. Use the artificial glass on a training scene or put it into a wound moulage or make-up wound.

Size: 10 x 3.5 x 1.5 cm

Wound packing trainer

Price inquiry: +48 605999769, kontakt@openmedis.pl

Product code: SM01929



This affordable and realistic Wound Packing Simulator is ideal for emergency training and the simulation patient program.

Shown is a realistic bullet wound with bleeding function caused by a large gun caliber, ideal for training the Wound Packing procedure.

The Simulator is made of a high quality and very durable silicone that simulate human skin and tissue. Common hemostatic wound pads can be used. We recommend to use our washable, non-staining artificial blood (Ref.no. 7024) with the simulator. The trainer is fast and easy to clean after use.

The package contains:

- Wound Packing Simulator
- 250 ml artificial blood
- Bottle for fake blood
- Tube 80 cm
- Plastic tray

Size: 12.5 x 10 x 5 cm, weight: 1 kg