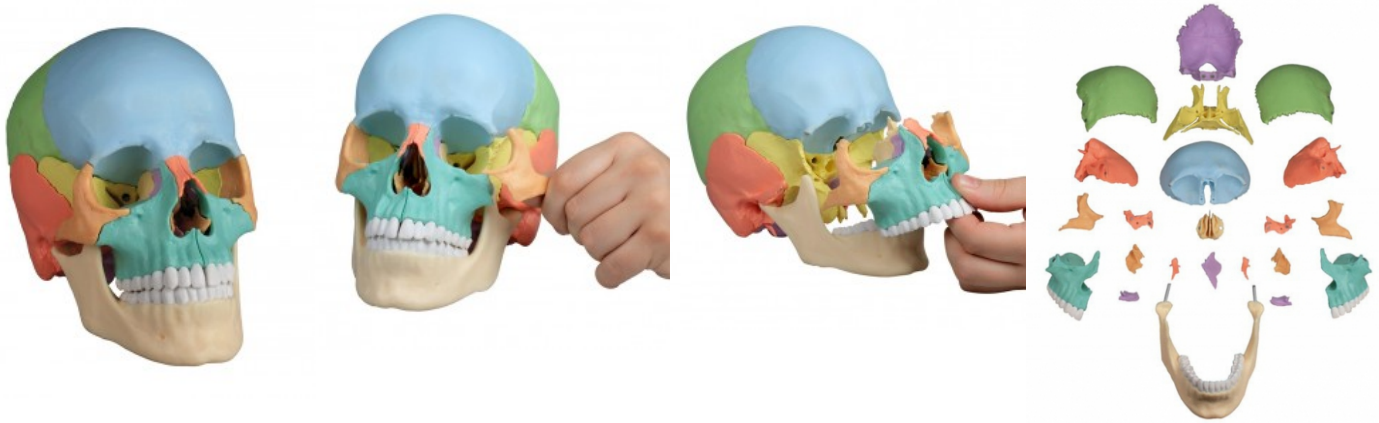


## Osteopathic Skull Model, 22 part, didactical version

**Price inquiry:** +48 605999769, [kontakt@openmedis.pl](mailto:kontakt@openmedis.pl)

Product code: MA00033



This fascinating **anatomical model** of an average European adult skull can be disassembled into 22 single bones. During development of this model one of the main targets was to make the model easy to assemble and dismantle. Stable parts with convenient magnet connections make handling of the product a child's play. The detailed bones do not need any complicated pins to be stuck into holes, they almost slide into position, guided by realistic bone sutures and held by strong magnets. The perfect tool for Osteopaths.

### The following bones are represented:

- Parietal bone left and right
- Occipital bone
- Temporal bone left and right
- Sphenoid bone
- Frontal bone
- Ethmoid bone
- Vomer
- Palatine bone, left and right
- Inferior nasal concha left and right
- Maxilla with teeth, left and right
- Lacrimal bone left and right
- Nasal bone left and right
- Zygomatic bone left and right
- Mandible with teeth

Supplied with users guide in English and German as well as a CD with Key card document in Latin, German, English, French, Spanish, Portuguese, Italian, Polish, Russian, Arabic, Korean and Japanese.

## Skeleton of foot with tibia and fibula insertion, flexible

**Price inquiry:** +48 605999769, [kontakt@openmedis.pl](mailto:kontakt@openmedis.pl)

Product code: MA01054



A life-size elastic model of the human foot with fragments of the lower leg bones. Individual bones have been connected with a special elastic band, which makes this model very mobile. It is a feature that distinguishes this model from other similar products available on the market. Its design also allows for translational and anatomical movements in individual foot joints, and due to the presence of fragments of the lower leg bones, also movements in the upper ankle joint. Anatomical models constructed in such a way are perfect learning aid for physiotherapists, manual therapists, doctors and medical students.

### The model presents:

- distal fragments of the lower leg bone (tibia and fibula),
- tarsal bones (talus, heel bone, wedge heel, scaphoid bone, cubic bone),
- bones of metatarsus,
- phalanges

### Additional information:

•

the using of special, elastic rubbers as joints of individual bones makes the model highly flexibley.

## Luxury demonstration skull; 14 parts; for advanced studies

**Price inquiry:** +48 605999769, [kontakt@openmedis.pl](mailto:kontakt@openmedis.pl)

Product code: MA02393



This skull model is an actual cast of a real human specimen and shows all anatomical structures in highest detail. It is made for students in anatomy, medicine, surgery, otolaryngology, ophthalmology and dentistry. The Skull is intricately sectioned and reassembled with metal and magnet connections.

The calvarium is sectioned horizontally leaving the temporal bone and its sutures intact. Bony impressions of the superior sagittal sinus, transverse sinus and sigmoid sinus as well as the meningeal vessels have been painted. The base portion of the skull has been sagittally sectioned in the way that it passes through the one cribriform plate on one side and another section in the same plane passes through the other cribriform plate of the ethmoid leaving the crista galli perpendicular plate of the ethmoid intact as also the whole nasal septum. The structures of anterior, middle and posterior cranial fossae are easily accessible. One can directly visualize the nasal cavity, the concha, the nasal septum, the bony pharyngeal and naso-pharyngeal spaces. The nasal septum is separable from surrounding bones. The frontal sinuses have been dissected on one side to show the sinus as whole and on the other side chiselled out for full access to the sinus. The relation of this sinus to the nasal cavity is clearly shown and is especially valuable for otolaryngologists. On one side of the skull the temporal bone has been left in situ. The other temporal bone is removable from the skull. A portion of the mastoid and squama can be removed along with the tympanic antrum, baring internal ear in full view. All three semicircular canals are visible along with the course of the facial nerve coursing backwards and then downwards emerging finally through the stylo-mastoid foramen. The removable temporal bone has the external auditory meatus intact. An almost vertical section through the squama mastoid process and carried inwards along the petro-squamosal junction has been made and when apart, one sees the position of tympanic membrane. The carotid canal has been opened as also the cochlea, showing the internal canal, and the course of the facial nerve has been depicted. Oval window, the semi-circular canals, and aditus of the tympanic antrum are visible. The maxilla and mandible expose the structures of dentition, the roots, the bony margin of the alveolar process, dental vessels and nerves are visible. The maxillary sinus can be opened by removing a bone flap. Teeth of the right mandible are sectioned to show the inner tooth structure.

## Miniatur-Skelett „Patrick“

**Price inquiry:** +48 605999769, [kontakt@openmedis.pl](mailto:kontakt@openmedis.pl)

Product code: MA02612



A 1/2 life-size scale model of the human skeleton. The arms and legs are fully movable; The arms, hips, knee and ankle are mounted as movable joints to allow for natural movement. The three-part skull as well as the upper and lower limbs are detachable. The legs can be zipped off at the knee and ankle. Size without stand 84 cm. The model can be easily removed from the stand.

Size: 84 cm, weight: 1.2 kg.

## Spine model for manual therapy

**Price inquiry:** +48 605999769, [kontakt@openmedis.pl](mailto:kontakt@openmedis.pl)

Product code: MA01329



**Flexible spine model** dedicated to physiotherapists, osteopaths, manual therapists, orthopedists. 1: 1 scale. Possibility to detach the pelvis.

### Advantages:

- Special assembly on a flexible metal spiral rod that makes the spine stable and at the same time very flexible.
- The perfect model for anyone who wants to work intensively with the spine for many years.
- Special flexible intervertebral discs behave like natural.
- The model also has spinal nerves and vertebral artery and a base with a tripod. Individual segments of the spine have flexible intervertebral discs made of special foam, which squeeze on one side and expand on the opposite side, as in natural conditions.
- Flexible intervertebral discs prevent an unnatural gap between the vertebral body and the intervertebral disc when the spine is bent.
- All bone parts are cast from the natural spine and show anatomical details such as crevices, appendage holes, furrows, nodules.
- Due to the use of an unbreakable, flexible metal rod, the spine is permanently elastic.
- Flexible intervertebral discs, outgoing spinal nerves and natural motility very well show the interaction between the intervertebral disc, vertebra and nerves.
- The sacrum is movable in a natural range - approx. 2 degrees of mobility.
- The pelvis can be removed.

### Destiny:

- This model is ideal for learning anatomy, demonstrating spinal curvatures and scoliosis
- The model is also used in manual therapy for learning research and mobilization in two and three-dimensional bolting.

### Additional information:



- It is the best model for anatomy, manual therapy training, patient education and demonstration.
- height: 70 cm
- weight: 1.8 kg
- Highly mobility of the model

## Flexible vertebral column model

**Price inquiry:** +48 605999769, [kontakt@openmedis.pl](mailto:kontakt@openmedis.pl)

Product code: MA01386



A flexible model of vertebral column in life size consisting of the occipital plate:

- cervical,
- thoracic and lumbar vertebrae;
- sacrum; coccyx; ]
- complete pelvis.

Features include representations of the vertebral arteries, spinal nerve branches, and a prolapsed L3-L4 intervertebral disc. Mounted on a stand for hanging.

Size: 75cm, weight: approx. 2.5 kg

## Flexible vertebral column with femur heads

**Price inquiry:** +48 605999769, [kontakt@openmedis.pl](mailto:kontakt@openmedis.pl)

Product code: MA01349



A flexible life size vertebral column consisting of the:

- occipital plate;
- cervical,
- thoracic and lumbar vertebrae;
- sacrum; coccyx;
- complete pelvis with symphysis;
- and removable femur heads.

The model also features representations of the vertebral arteries, spinal nerve branches, and a prolapsed L3-L4 intervertebral disc. Mounted on a stand for hanging.

Size: 85 cm, Weight: approx. 2.9 kg



## Female pelvic floor model, 12 parts

**Price inquiry:** +48 605999769, [kontakt@openmedis.pl](mailto:kontakt@openmedis.pl)

Product code: MA00626



A life-size model of the pelvic floor muscles. Individual muscles can be easily removed. The model also shows the bone anatomy of the female pelvis. The model presents the following structures:

- Obturatorius internus muscle (left and right)
- Piriformis muscle (left and right)
- Coccygeus muscle (left and right)
- Pelvic diaphragm (levator ani muscle consisting of puborectalis muscle, pubococcygeus muscle and iliococcygeus muscle)
- Urogenital diaphragm (consisting of the deep transverse muscle of perineum, the superficial transverse muscle of the perineum and the ischiocavernosus muscle)
- Sphincters of the urogenital and digestive tract (consisting of external anal sphincter, urethral sphincter and bulbospongiosus muscle)
- Anatomy bone structure of the female pelvis

### Advantages:

- 

The model consists of a total of 12 parts.

- 

It is possible to present individual layers.

- Ideally suited for childbirth preparation courses, birthing schools and for midwifery students.
- detailed pelvic bone anatomy showing characteristic anatomical points the exact anatomy of the pelvic floor muscles

### Additional information:

- 

Size: 27 x 18 x 17 cm

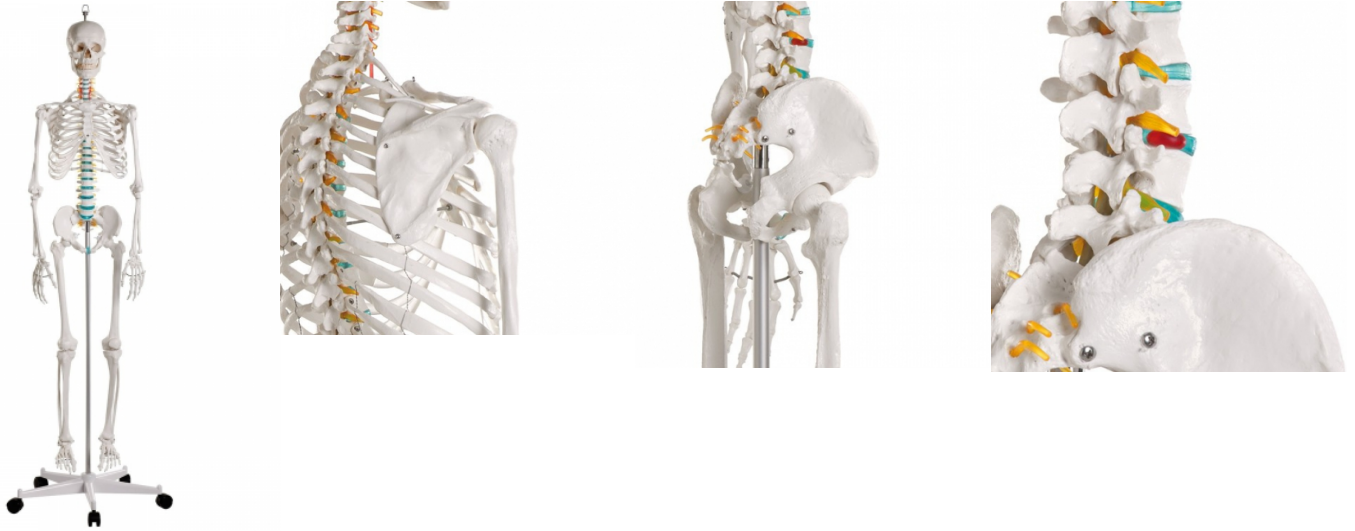
- Weight: 1 kg



## Didactic skeleton, basic version

**Price inquiry:** +48 605999769, [kontakt@openmedis.pl](mailto:kontakt@openmedis.pl)

Product code: MA00080



School skeleton. A full-size model of the human skeleton intended for educational purposes. It allows you to demonstrate the anatomical structure of the skeletal system, topography of individual bones and their mutual relations. It was designed based on the anatomical structure of the skeleton of an adult male of average height.

### Features:

- stable structure of the skeleton placed on a metal rod having a plug-in connection with a 5-inch wheel stand made of durable,
- break-resistant material teeth are a separate element, they are placed in the jaw,
- detachable upper and lower limbs,
- hyoid bone,
- the 3-part skull with the option of detachment from the skeleton, set in a realistic way on the C1-occipital joint,
- the model contains hyoid bone shoulder, hip, knee joints are connected by flexible rubber.
- This is a feature that distinguishes good skeletons with metal joints.
- This makes it possible to present real movable and translational movable property.
- The model contains approximately 200 life-size bones.
- It presents important anatomical structures.
- The model is equipped with a special ring, thanks to which it can be hung if needed. the model is placed on a 5-arm stand.

### Additional information:

- Size with stand: 178 cm
- Weight: approx. 9 kg
- Intended for elementary, high schools, colleges and universities as an element of teaching rooms equipment.
- It can be used in medical or rehabilitation rooms as it is ideal for demonstration purposes for patients.

