

1/3 Life-Size Human Muscle Figure, 2 part

Price inquiry: +48 605999769, kontakt@openmedis.pl

Product code: MA08086



The mini muscle figure has (57 cm) strength is in its value. All the superficial musculature of the human form is accurately reproduced and detailed in life like colors in this desktop size of the muscular figure. The chest plate is removable from the muscular figure to reveal the internal organs and the right side contains a female mammary gland. Over 125 hand-numbered and identified structures of the human anatomy on this muscular figure. Mini muscular figure delivered on base. Every original 3B Scientific® Anatomy Model gives you direct access to its digital twin on your smartphone, tablet or desktop device. Enjoy using the exclusive virtual anatomy content with the following features:

- Freely rotate your digital model and zoom in and out
- Display hotspots and their anatomical structures
- Augmented Reality (AR) feature starts your virtual anatomy model
- Anatomy Quiz function to test and improve your anatomical knowledge with instant results and final score evaluation
- Drawing function that allows image customization with save and share function
- Useful Notes function to help you with your personal learning
- Possibility to learn both male and female anatomy
- Easy access to 3D content both online and offline
- Available in 11 languages

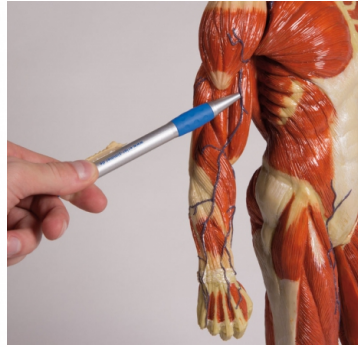
To get started, simply scan the QR-code located on your 3B Scientific® Anatomical Model, download the new 3B Smart Anatomy app and step into the virtual world of Human Anatomy. [Click here to learn more.](#)



Muscular figure, 1/3 life size

Price inquiry: +48 605999769, kontakt@openmedis.pl

Product code: MA01559



This muscular figure has extraordinary fine structures and a very detailed painting. On one side it shows the superficial musculature, on the other side the deep muscles. Both arms are detachable. Important superficial vessels are also represented. Perfect as tool for patient education, also for sports and fitness studios as well as for physiotherapy. Heavy premium quality.

Size: approx. 62 cm, weight: 5.1 kg

Muscular figure, 2/3 life size, 32 parts

Price inquiry: +48 605999769, kontakt@openmedis.pl

Product code: MA00669



This 30 part muscular figure is about 2/3 life size and includes a 6part muscular arm and a 8part muscular leg. The removable parts include skull cap, brain (3 parts), lung halves, 2part heart, trachea, oesophagus, liver with gallbladder, duodenum with pancreas and spleen and the intestines. All structures are numbered and referenced on the supplied key card. Height about 135cm.



Muscular Figure, 30 Parts, 85 cm

Price inquiry: +48 605999769, kontakt@openmedis.pl

Product code: MA02616



This 1/2 life size high quality model represents a replica of the complete human muscular and organs anatomy. It illustrates with excellent detail the superficial and deeper muscles, tendons, ligaments, vessels and body structures. The internal organs are removable for closer examination to study the relationships among all the body structures.

The following organs can be removed:

- Brain, 2 part
- Heart, 2 part
- 2 Lungs
- Stomach
- Liver
- Pancreas, duodenum, spleen
- Intestines

Skull cap, Arms and belly cover can be removed;

The following muscles can be removed:

- masseter muscle
- deltoid muscle
- biceps brachii muscle
- flexor carpi ulnaris muscle, palmaris longus muscle, flexor carpi radialis muscle
- extensor carpi ulnaris muscle, extensor digitorum muscle
- sartorius muscle
- rectus femoris muscle
- adductor longus muscle
- gluteus maximus muscle
- gluteus minimus muscle
- biceps femoris muscle, semitendinosus muscle
- gastrocnemius muscle



- soleus muscle
- tibialis anterior muscle

Supplied with stand.

Size: 33 x 30 x 87 cm, weight: approx. 5.3 kg



Head, neck and thorax muscles, 1-part

Price: 343.17 EUR + shipping cost

Product code: MA04000

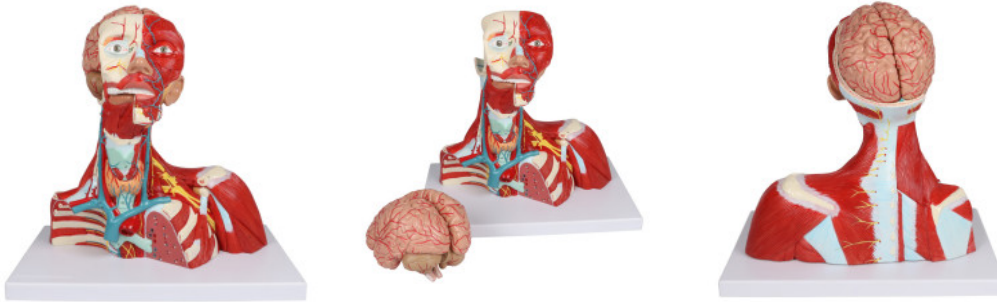


This model shows the muscles of the head, neck and superior thoracic region. Superficial and deep musculature are well represented, as are the pathways of the subclavian and carotid arteries.

Head, neck and thorax muscles, 2-part

Price: 703.56 EUR + shipping cost

Product code: MA04001



The product is designed in equal proportion to the human body. The brain can be removed separately, divided into left and right brains. It describes in detail the anatomy of the neck, the superficial structure of the neck, the anterior cervical area and the sternocleidomastoid region, the lateral cervical area, the root of the neck, the cervical fascia and the fascia space. And on this basis, the anatomy of the brain and the face is added, and the relationship between the head, face and neck is described in more detail.





Back Muscle Model, 4-part

Price inquiry: +48 605999769, kontakt@openmedis.pl

Product code: MA00900



An invaluable tool for physicians who wish to discuss back pain with their patients, this back muscle model is designed for interaction and education. Soft and flexible, the superficial and intermediate muscle layers are removable and expose the deep muscles, making the understanding of anatomical relationships an easy, interactive experience. Two pullout cards give information on the muscles.

Size: 22 x 27 x 16 cm, weight: 1.1 kg

Leg muscles, 12-part demountable

Price inquiry: +48 605999769, kontakt@openmedis.pl

Product code: MA00898



A life-size model of the human lower limb muscle. It has 12 demountable elements. It presents superficial and deep muscles, blood vessels, nerves and ligaments. It is possible to divide the model into the following muscles:

- Tensor fasciae latae
- plantar aponeurosis
- Extensor digitorum longus
- Rectus femoris
- Semitendinosus and semimembranosus
- Gracilis
- Gluteus medius
- Gastrocnemius
- Soleus
- Gluteus maximus
- Long head of biceps
- Sartorius

Supplied with stand and manual.

Size: 103 x 19 x 17 cm, weight: approx. 9.7 kg





Arm muscle model

Price inquiry: +48 605999769, kontakt@openmedis.pl

Product code: MA02646



This model shows in great detail the muscles and tendons of the arms in both relaxed and tense states. Model based on.

Size: 40x26x6 cm Weight: 1 kg

Arm Muscles, 6-part demountable

Price inquiry: +48 605999769, kontakt@openmedis.pl

Product code: MA00598



A high-quality, life-size model of the upper limb muscles. It has 6 separate elements, such as:

- Palmar aponeurosis (palm prolongation)
- Brachioradial muscle with radial extensor muscle (wrist radiator and brachii)
- Long palmar muscle with radial flexor muscle (long hand palm and radial flexor of the wrist)
- Triceps muscle (three-headed shoulder)
- Biceps muscle (two-headed arm)
- Deltoid muscle (shoulder)

Additional features:

- The model has a basis and instruction.
- Size: 72 x 18 x 10 cm,
- Weight: 3.8 kg
- scale 1: 1











