



Gastroesophageal reflux disease

Price inquiry: +48 605999769, kontakt@openmedis.pl

Product code: MA01197



This 4-piece model shows the progressive stages of GERD.

The conditions include:

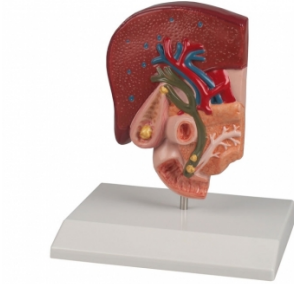
Sliding Hiatal Hernia and Acid Reflux; Chronic Acid Reflux/Barrett's Esophagus; Barrett's Esophagus/Adeno Carcinoma.

Size of single stages: 10 x 7.5 x 2.5 cm

Gallstone Model

Price inquiry: +48 605999769, kontakt@openmedis.pl

Product code: MA01094



This half natural size model shows the anatomy of the biliary system and its surroundings in great detail. Both the tissue changes caused by chronic inflammation and acute inflammation (cholecystitis) are represented in the gallbladder wall. Gallstones are shown in the following typical places:

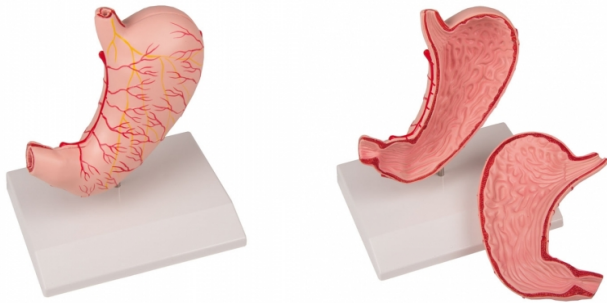
- spiral valve- fundus of the gall bladder- common bile duct- papillary opening to the small intestine.

Mounted on base.

Stomach, life size, 2 parts

Price inquiry: +48 605999769, kontakt@openmedis.pl

Product code: MA00942



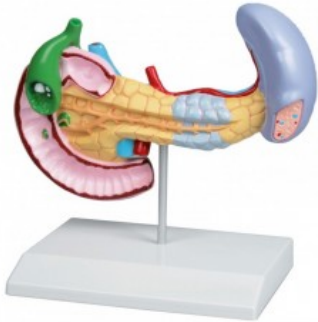
This life size model is dissected along the medial plane and can be opened to show the internal structure of the stomach, including the cardia, the mucosa and the pylorus. The model also shows the blood vessels. Mounted on stand.

Size: 15 x 15 x 6 cm, weight: 0.5 kg

Diseases of Pancreas, Spleen, Gall bladder

Price inquiry: +48 605999769, kontakt@openmedis.pl

Product code: MA01179



This full size model shows pancreatic cancer, the gallbladder with stones, a ruptured spleen and duodenum with an ulcer.

Haemorrhoids model

Price inquiry: +48 605999769, kontakt@openmedis.pl

Product code: MA01198



This descriptive model for patient education in about twice life size shows a frontalsection through the rectum. Additionally a smaller section can be found on the base as relief. The model shows outer haemorrhoids as well as inner haemorrhoids stage I and II. The additional relief model shows haemorrhoids stage III and IV. Also the anatomical structures of rectum, sphincter and venous plexus are represented.
Size: 17 x 12 x 10 cm

Colon model with diseases

Price inquiry: +48 605999769, kontakt@openmedis.pl

Product code: MA01098

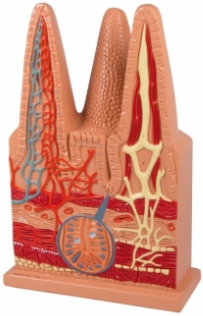


Reduced size model of a human colon showing ileum, caecum, ascending colon, transverse colon, descending colon, sigmoid colon and rectum. The following diseases are depicted: appendicitis, Crohn's disease, irritable bowel syndrome, ulcerative colitis, pseudomembranous colitis, diverticulosis, diverticulitis, carcinoma and colorectal polyps. On removable stand. With educational card.

Intestinal Villi, 100 times life-size

Price inquiry: +48 605999769, kontakt@openmedis.pl

Product code: MA00944



This 100 times life-size model consists of one entire villus, one longitudinally sectioned villus showing the arterioles and venules and one cross-sectioned villus to show the lymphatic vessels. Also includes a longitudinal section of Lieberkühn's crypt.

Size: 43 x 28 x 10 cm

Villus enlarged, 2-parts

Price inquiry: +48 605999769, kontakt@openmedis.pl

Product code: MA00946



This greatly enlarged 2-part model of a villus from the small intestine shows detail from a transverse and longitudinal section. Mounted on base, with key card.

Size: 17.5 x 15 cm

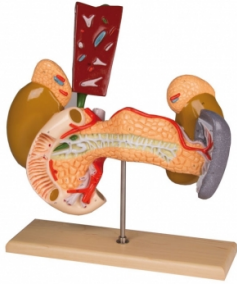




Internal organs, 2 parts

Price inquiry: +48 605999769, kontakt@openmedis.pl

Product code: MA00943



The organs are shown partially opened, and the gall bladder is removable with part of the liver.

It depicts:

- Pancreas
- Duodenum
- Gall bladder
- Spleen
- Kidneys
- Adrenal glands
- Blood vessels

Mounted on wooden stand.

Size: 33 x 28 x 15 cm

Oesophagus Diseases

Price inquiry: +48 605999769, kontakt@openmedis.pl

Product code: MA01101



This life-size model shows a frontal section of the lower part of the oesophagus and the upper part of the stomach.

The most common diseases are depicted:

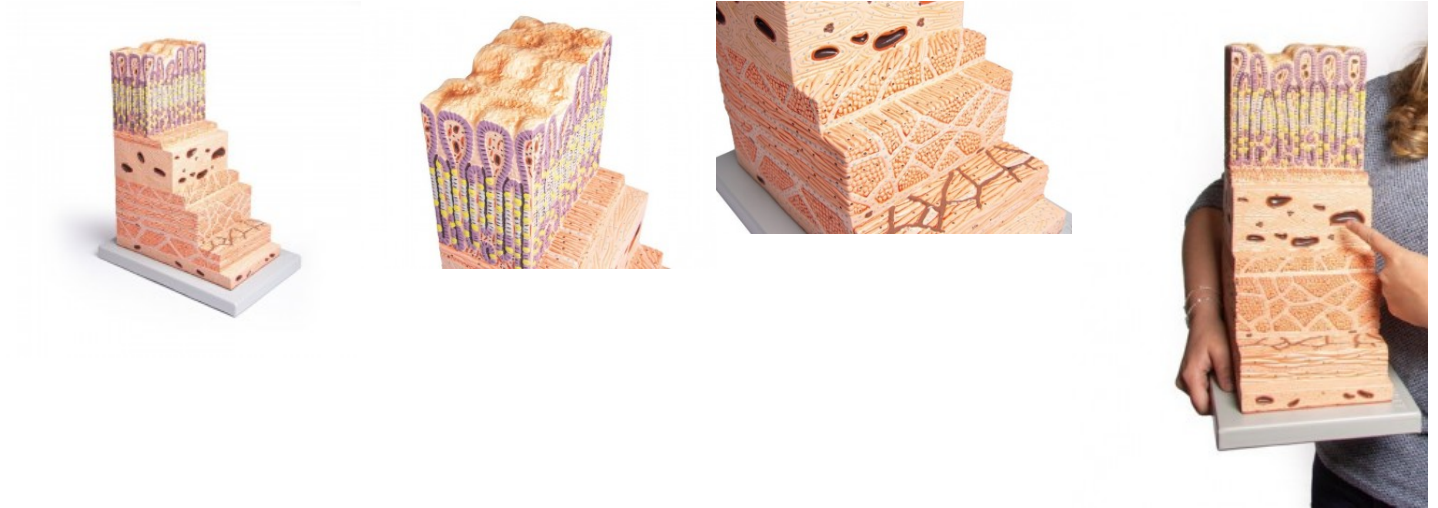
- Hiatal hernia
- Ulcer
- Reflux oesophagitis
- Barrett's Ulcer
- Oesophageal varices
- Oesophageal carcinoma

Mounted on base.

Gastric wall model (enlarged)

Price inquiry: +48 605999769, kontakt@openmedis.pl

Product code: MA07999



This one-piece model, 150 times life size, is an important tool to study the histology of the most important organ of the digestive system: the stomach. All the different layers from the epithelium to the serous coat are represented with great accuracy and detail. The principal structures, including different cellular types, capillary and lymphatic vessels are numbered and identified on the accompanying key card. Mounted on base.

Size: 30 x 20 x 38 cm, weight: 2 kg



Pankreas and Duodenum

Price inquiry: +48 605999769, kontakt@openmedis.pl

Product code: MA01095



This life size model is an accurate representation of the pancreas and duodenum. The pancreas is open to show the entire pancreatic duct. The duodenum is partially dissected to expose its internal structure. Mounted on stand.

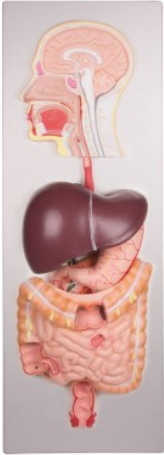
Size: 18 x 9 x 4 cm, weight: approx. 0.3 kg



Digestive system model, 5 parts

Price inquiry: +48 605999769, kontakt@openmedis.pl

Product code: MA00941



This life size model shows the human digestive tract from mouth cavity to rectum. The oral cavity, the pharynx and the first part of the esophagus are dissected along the medial sagittal plane. The liver is shown together with the gall bladder and is removable. The removable pancreas and duodenum are dissected to expose internal features. The stomach is removable and can be dismantled into two parts, the duodenum, caecum, part of the small intestine, large intestine and the rectum are open to expose the interior.

Mounted on board.
Size: 90 x 31 x 13 cm

Liver Lobule

Price inquiry: +48 605999769, kontakt@openmedis.pl

Product code: MA01093



This greatly enlarged model shows the fine detail of a single liver lobule, which is sectioned and shown in relationship to portions of surrounding lobules. The fine colouring distinguishes the portal veins and vessels, venous sinusoids and central veins with sections through the bile canaliculi. With key.

Size: 25 x 15 x 6 cm





Liver with gall bladder, pancreas and duodenum

Price inquiry: +48 605999769, kontakt@openmedis.pl

Product code: MA00949



This life size model shows a section of the liver with gall bladder, pancreas and duodenum; includes hepatic and pancreatic ducts. Mounted on board.

Size: 4 x 20 x 18 cm

Stomach model with gastric band

Price inquiry: +48 605999769, kontakt@openmedis.pl

Product code: MA02194



This life-size stomach model shows the function of the gastric band. This model clearly shows the effect of this band used in morbid obesity. The model can be split in two halves to show internal anatomical structures.

Specifications:

- dimensions: 15cm x 6cm x 18cm
- weight: 500g
- advanced painting
- delivered based on

Stomach with Ulcers

Price inquiry: +48 605999769, kontakt@openmedis.pl

Product code: MA01097



This reduced size model shows different stages of gastritis starting from light ulcer and ending in perforation. The section model shows the lower part of esophagus, the stomach and the start of duodenum.

It shows the following pathologies:

- Hypertrophic gastritis
- Hemorrhagic gastritis
- Erosive gastritis
- Erythematous gastritis
- Healing stage with scar formation
- Bleeding ulcer
- Perforated ulcer

On Stand.

Size stomach: 12 x 9 x 2 cm, size cross section: 12 x 3 x 1 cm

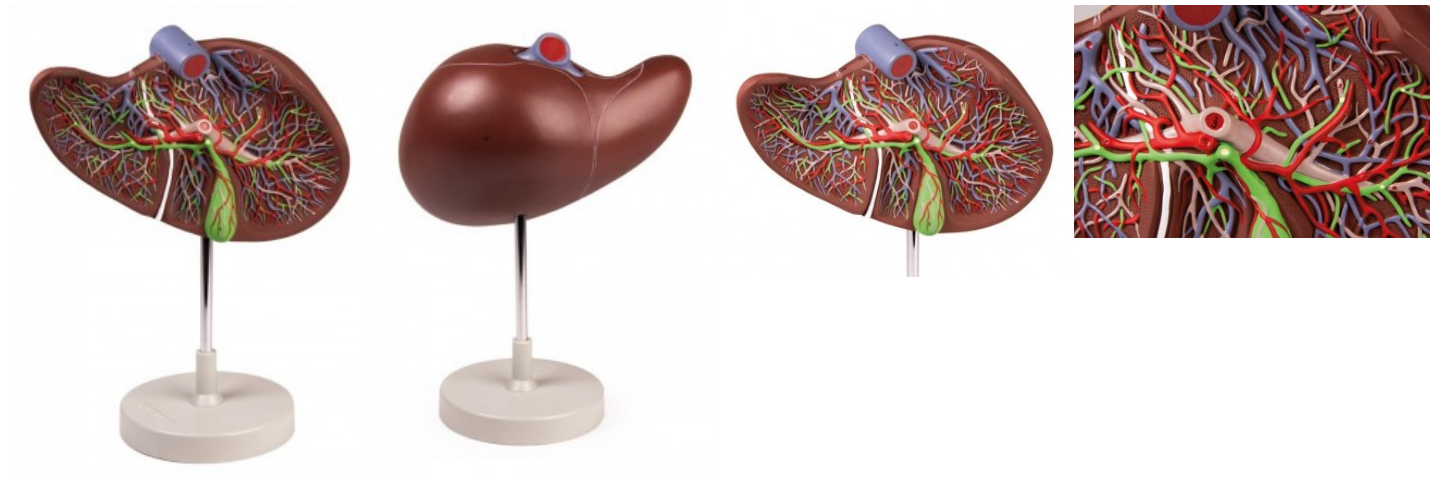
Weight: 0.2 kg



Liver and Gall Bladder

Price inquiry: +48 605999769, kontakt@openmedis.pl

Product code: MA08004



Enlarged 1.5 times, this model shows a liver that is dissected to expose the internal distribution of arteries and veins, the portal vein and the bile duct. Mounted on stand.
Size: 15 x 26 x 12 cm, Weight: approx. 1 kg