

Functional larynx model, 2:1 scale, 5 parts

Price inquiry: +48 605999769, kontakt@openmedis.pl

Product code: MA01973



This 5-part model is sectioned longitudinally to reveal intimate details of internal structures, including the hyoid bone, cartilages, ligaments, muscles, vessels, nerves and thyroid gland. Mounted on stand.

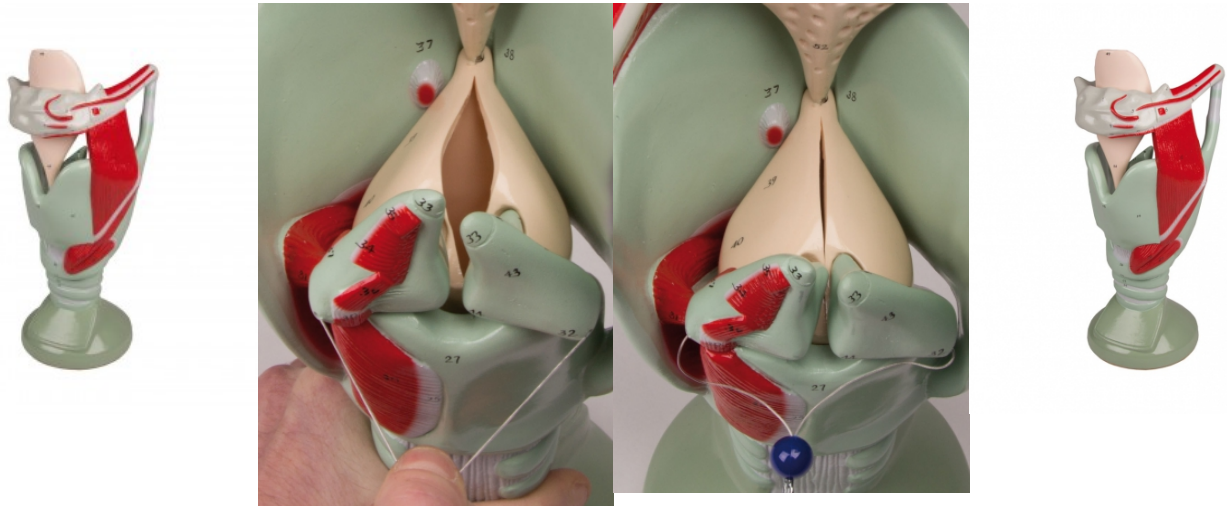
Size: 18 x 11 x 8 cm

Weight: 0.5 kg

Functional Larynx, 4 times life size

Price inquiry: +48 605999769, kontakt@openmedis.pl

Product code: MA01453



Enlarged Model of a human larynx with hyoid bone. It shows cartilaginous structures on the right side, the left side shows musculature. Movable mounted are vocal cords, arytenoid cartilages and epiglottis to demonstrate their functions. Mounted on stand.

Size: 38 x 18 x 15 cm, weight 1.6 kg





Median Sagittal Section of Nasal Cavity

Price inquiry: +48 605999769, kontakt@openmedis.pl

Product code: MA02038



3x life size; model shows a medial section of the nasal cavity. The nasal septum and part of the olfactory epithelium are removable to expose deep internal structures. Mounted on base.

Size: 23.5 x 6.5 x 28.5 cm, weight: approx. 1.3 kg, 3 parts in total

Larynx model 2 parts

Price inquiry: +48 605999769, kontakt@openmedis.pl

Product code: MA01972



The natural size model of the larynx based on the possibility of division along the midline so that you can reveal the details of internal structures, including laryngeal cartilage, larynx muscles, larynx cavity, muscles, vessels, nerves and thyroid.

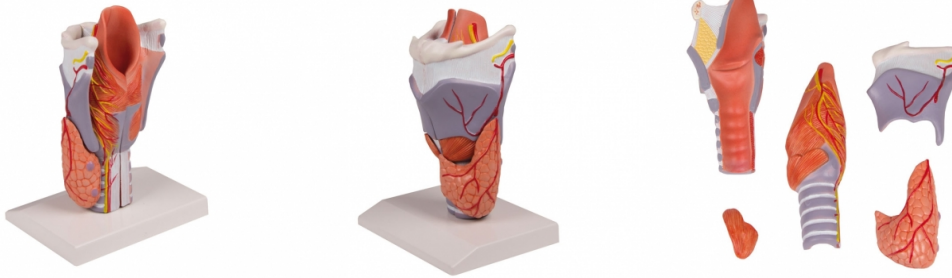
Size: 11 x 11 x 15 cm

Weight: 0.2 kg

Larynx Model, 2 times enlarged, 5-part

Price inquiry: +48 605999769, kontakt@openmedis.pl

Product code: MA00935



Enlarged larynx model consisting of five parts and in longitudinal section showing the structure of the larynx. These are: hyoid bone; cartilage; ligaments; muscles; blood vessels; nerves; thyroid.

Additional information:

- Model on base.
- dimensions 20x11x9cm
- weight: 0.5 kg

Larynx Model, life size, 2-part

Price inquiry: +48 605999769, kontakt@openmedis.pl

Product code: MA00938



A life-size larynx model that can be broken down into 2 parts. The model presents the following structures: hyoid bone cartilage muscle tendons, dishes nerves thyroid.

Additional information:

- Model on a tripod.
- Size: 11 x 6 x 5 cm
- weight: 0.1 kg

Nose and Olfactory organ, 4 times life size

Price inquiry: +48 605999769, kontakt@openmedis.pl

Product code: MA00939



The mid-section of the nose and the sense of smell at 4 times magnification. It presents in a detailed way the nasal septum together with nerves and vessels (right side), individual structures of the inner nasal cavity, sinuses and the eustachian tube (left side). Model elements are numbered.

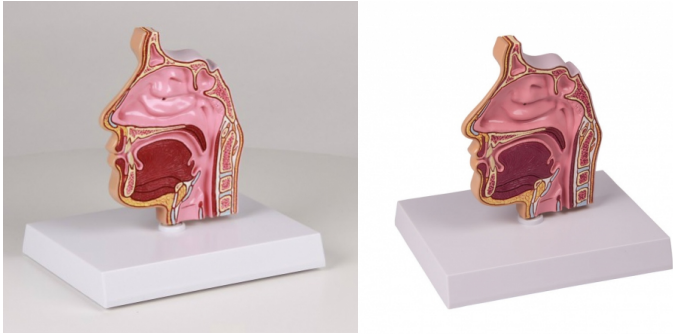
Additional information:

- Supplied on a wooden base.
- The individual elements are numbered.

Nose and sinus model

Price inquiry: +48 605999769, kontakt@openmedis.pl

Product code: MA00940



This cut-away model depicts a near median section through the nose and nasal passages. Details include nasal cavity, soft & hard palate, uvula and pharyngeal tonsil. Back side shows ethmoid and maxillary sinus cavities.

Size: 12 x 2 x 14 cm

Bronchioles

Price inquiry: +48 605999769, kontakt@openmedis.pl

Product code: MA01218



A model of the terminal bronchiole system of the lungs. Greatly enlarged and manufactured in rigid unbreakable material.

Length: 13 cm



Half lungs, 1/2 life size

Price inquiry: +48 605999769, kontakt@openmedis.pl

Product code: MA02192



Right lung model doubled. **Includes:**

- bronchi,
- arteries,
- veins.

Specifications:

- dimensions: 11cm x 7cm x 7cm,
- weight: approx. 0.2 kg,
- advanced painting,
- delivered based on.

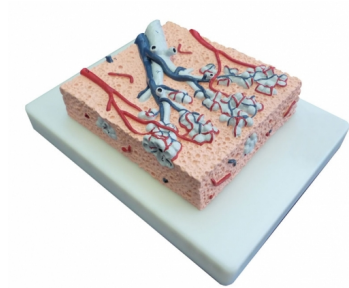




Lung microanatomy

Price inquiry: +48 605999769, kontakt@openmedis.pl

Product code: MA00760



20-fold magnification of the pulmonary lobe. It presents the following elements of lung structure: bronchi, bronchioles alveoli along with the blood vessels.

Additional features: Size: 12 x 10 x 3 cm, educational card included.

Lung model, didactic, 2-part

Price: 264.45 EUR + shipping cost

Product code: MA04006

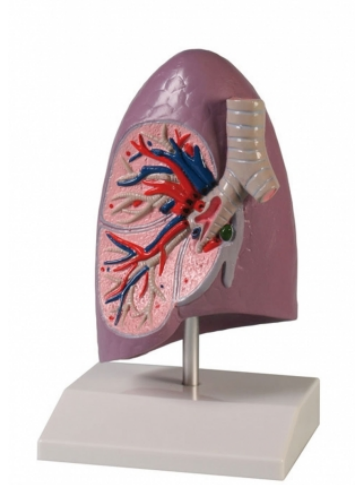


This life size model clearly shows the segmental anatomy of the left and the right lungs. The various lobes are painted with different colors to highlight their locations.

Lung half, life size

Price inquiry: +48 605999769, kontakt@openmedis.pl

Product code: MA00754



Model of a right lung in about life size with bronchus, arteries and veins. On stand.

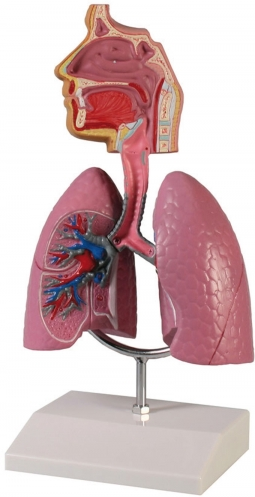
Size: 14 x 12 x 23 cm, weight: 0.3 kg



Human Respiratory System

Price inquiry: +48 605999769, kontakt@openmedis.pl

Product code: MA00755



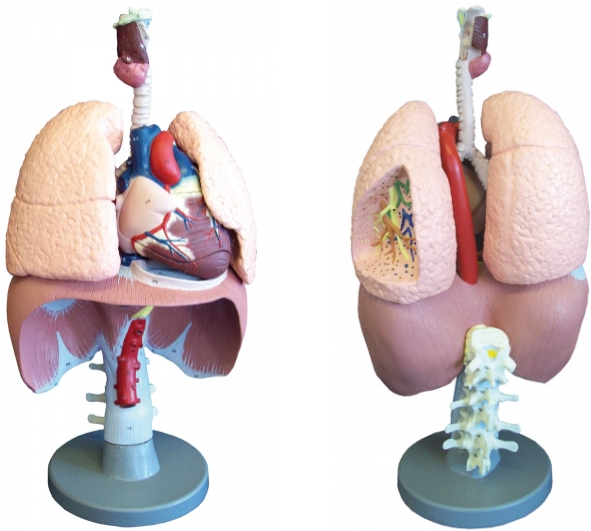
Representation of the human respiratory system in about half life size. Lungs, trachea and upper respiratory tract are shown in detail. The model comes on a removable stand.

Size: 16 x 13 x 28 cm, weight: 0.4 kg

Respiratory organs

Price inquiry: +48 605999769, kontakt@openmedis.pl

Product code: MA00657



An anatomical model showing in detail the elements of the respiratory system in a 1: 1 scale. It also contains three thoracic and 3 lumbar vertebrae. The left lung is presented in cross-section to present bronchioles, pulmonary arteries and veins. The larynx's cross section shows its detailed structure. This model also shows the atria and ventricles of the heart, the main veins - the upper and lower, the aorta, pulmonary artery and coronary sinus.

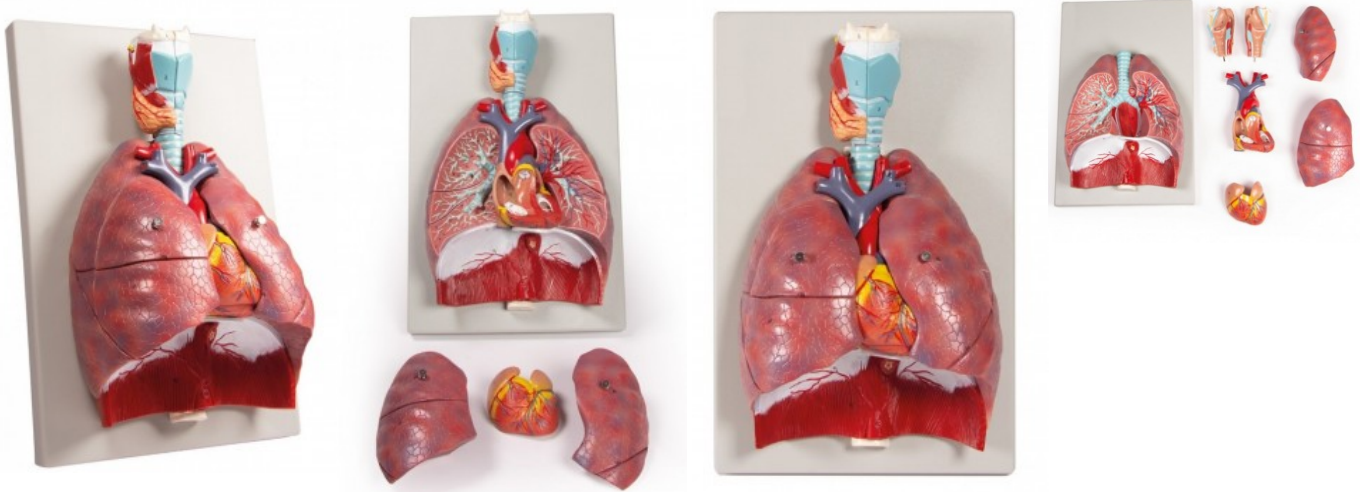
Additional information:

- The model has a base and an instruction.
- Size: 41 x 23 x 19 cm

Model of the cardiopulmonary system

Price inquiry: +48 605999769, kontakt@openmedis.pl

Product code: MA02043



Life-size anatomical model of the entire human respiratory system. It consists of 7 parts representing the larynx (in the sagittal plane); lungs (along the frontal plane); and a two-piece heart. Mounted on the base. The use of didactic colors facilitates learning and speeds up the education process. The model of the respiratory system is an excellent teaching aid for everyone who wants to learn the details of the anatomical structure of the human respiratory organs. The model of the human respiratory system is ideal for learning anatomy at home and during seminar classes at universities or medical schools. The model is manufactured by the German company Erler-Zimmer, the leader of this type of solutions on the global market.

Erler-Zimmer is a recognizable and world-renowned manufacturer of anatomical models, medical simulators and phantoms as well as veterinary models and simulators. For over 70 years it has been operating in the production and distribution of teaching aids in the field of all medical faculties and veterinary medicine. Erler-Zimmer anatomical models are made with the utmost care and from the best quality materials. Many of them are hand-finished, which is why Erler-Zimmer anatomical models are characterized by high accuracy and careful workmanship. Thanks to the use of modern 3D printing technology, Erler-Zimmer has created a unique series of 3D anatomical models. Based on radiological data, a series of models faithfully reflecting the human body was created. These advanced teaching aids are the equipment of anatomical laboratories of many Medical Universities in Poland. It is a modern solution used in many countries around the world.

Advantages of the human respiratory anatomical model:

- Can be divided into individual parts
- Learning the correct anatomy
- Learning the topography and mutual relations of organs
- The individual elements are didactically painted
- Hand-painting
- Assembled and stabilized on the base.
- Size: 26 x 40 x 12 cm, Weight: approx. 1.3 kg

Application of the anatomical model of the human respiratory system:



- Anatomy lab equipment
- Learning anatomy in home and seminar conditions
- The anatomical model can be used to demonstrate the structure of the respiratory system - to patients in office conditions
- As a teaching aid during postgraduate training for doctors, physiotherapists, osteopaths and other medical professions.

Transparent Laryngopharynx Model

Price inquiry: +48 605999769, kontakt@openmedis.pl

Product code: MA02276



This is a transparent model that reproduces the laryngopharynx three-dimensionally, from the oropharynx to the hypopharynx. It is useful in explanations to help people understand the complex structure of the laryngopharynx, and can be used as a model when training personnel involved in swallowing therapy or when giving explanation to patients or their families.

Specifications:

- The model can be split on the midline.
- The epiglottis, pyriform sinus, and glottis are faithfully reproduced, and the depth of the pyriform sinus and laryngeal vestibule can be understood.
- The complex 3-dimensional structure of the laryngopharynx can be intuitively grasped through visualization. The flow of food from the outside can also be seen (Actual liquids can be used).
- The importance of food preparation and eating posture can be taught with an understanding of the 3-dimensional structure of the laryngopharynx. The difficulty of coughing up food that has been accidentally ingested can also be understood.
- When teaching videoendoscopic examination of swallowing, the location that is being viewed can be understood by visually comparing endoscopic images and the model.
- The state of occlusion in the esophagus can be expressed with a line to help create a mental image.
- Size: 9 x 11 x 13 cm
- weight: 1.1 kg

Transparent model nose

Price inquiry: +48 605999769, kontakt@openmedis.pl

Product code: MA02270



Using this transparent model, it is possible to understand at a glance and explain simply the complex structure of the nasal cavities. The three-part model can be taken apart (two halves and a dividing plate). A versatile model for patient information or medical training. The model is flexible and can be used for the most diverse exercises. Very good also for planning of surgery.

Segmented Lung reproduction, 19 parts

Price inquiry: +48 605999769, kontakt@openmedis.pl

Product code: MA01834



The Segmented Lung Reproduction is an anatomically accurate reproduction of human lungs and bronchial tree cast from actual human specimen for in-depth anatomy studies and patient education. It is a teaching tool, manufactured to enable students to easily view the internal structures, including a cutaway view of bronchioles and lobules, detailed primary, secondary and tertiary bronchi and a detailed bronchial tree.