

## Anatomical brain half, life-size

**Price inquiry:** +48 605999769, [kontakt@openmedis.pl](mailto:kontakt@openmedis.pl)

Product code: MA02187



This life-size brain model is carefully painted, in realistic colors, depicting the main anatomy of the brain.

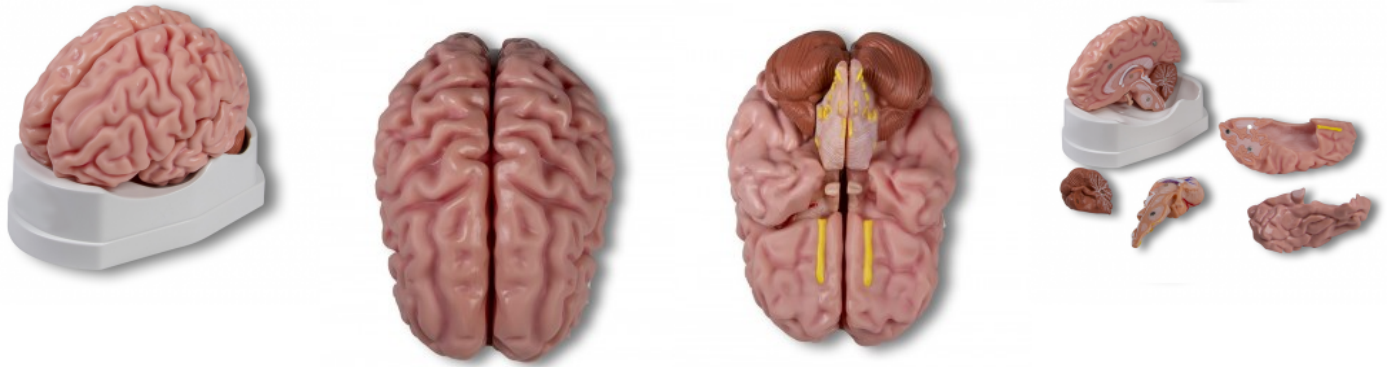
### Specifications:

- life size
- weight: approx. 1 kg

## Anatomical brain model, life-size, 5 parts

**Price inquiry:** +48 605999769, [kontakt@openmedis.pl](mailto:kontakt@openmedis.pl)

Product code: MA02272



This life-sized brain model is carefully painted in realistic color depicting the major anatomy of the brain. The left half comes apart in four pieces- the frontal and parietal, the temporal and occipital, the brainstem, and the cerebellum. The brainstem includes the trigeminal nerve (V), abducens nerve (VI), vestibulocochlear nerve (VIII), facial and intermediate nerves (VII), trochlear nerve (IV), olfactory nerve (I), glossopharyngeal nerve (IX), vagus nerve (X), accessory nerve (XI), cervical ventral roots, and hypoglossal nerve (XII). The hippocampus is attached to the brainstem to show the

relation of the hippocampus to the fornix and mammillary body in the brainstem. The choroid plexus is also shown.

## Soft Brain, 8 parts

**Price inquiry:** +48 605999769, [kontakt@openmedis.pl](mailto:kontakt@openmedis.pl)

Product code: MA00741



This realistic model is made of soft, tissue like material to be as realistic as possible. It can be divided into 8 parts:

- Frontal and parietal lobes
- Temporal with occipital lobes
- Brain stem
- Cerebellum

Size: 14 x 16 x 14 cm

## Neuron model with stages of multiple sclerosis

**Price inquiry:** +48 605999769, [kontakt@openmedis.pl](mailto:kontakt@openmedis.pl)

Product code: MA01068



This unique model shows an enlarged human neuron. The axon shows a healthy myelin sheath and three stages of myelin sheaths affected by multiple sclerosis. The neuron can be removed from the base for closer study.  
Size of model: 14.5 x 4 x 2 cm

## Brain ventricle

**Price inquiry:** +48 605999769, [kontakt@openmedis.pl](mailto:kontakt@openmedis.pl)

Product code: MA01209



Life size model of the human lateral ventricles, cerebral aqueduct, as well as the 3rd and 4th ventricle. With removable stand.

## Cerebrospinal Fluid Circulation

**Price inquiry:** +48 605999769, [kontakt@openmedis.pl](mailto:kontakt@openmedis.pl)

Product code: MA02180



Detailed cross-sectional model of the right half of the brain. Cerebrospinal fluid areas are clearly marked and flow direction is indicated by arrows.

### specifications:

- dimensions: 25cm x 18cm x 12cm
- weight: approx. 0.9 kg
- advanced painting

## Vertebra with spinal cord section

**Price inquiry:** +48 605999769, [kontakt@openmedis.pl](mailto:kontakt@openmedis.pl)

Product code: MA01067



Individual cervical vertebra with cross sectional representation of the spinal cord. White and grey spinal cord substance and the spinal nerves shown. On baseboard.















## Product information: Human brain model, natural cast

**Price inquiry:** +48 605999769, [kontakt@openmedis.pl](mailto:kontakt@openmedis.pl)

Product code: MA02580

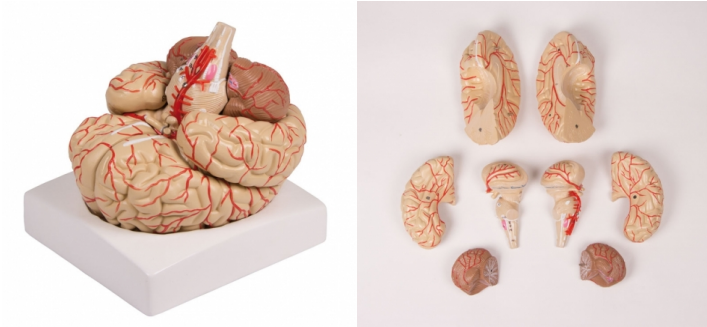


This model of the brain was formed from a real human brain. Special materials and an elaborate manufacturing process allow for a previously unknown level of detail in recreating structures in anatomy lessons. The left and right hemispheres are separate and allow you to see the brain's rod (corpus callosum) and the rim, as well as the hypothalamus, bridge, and cerebellum. There are two different models available, each one fits a specific skull. The skull is not included.

## Brain model, 9-part with arteries

**Price inquiry:** +48 605999769, [kontakt@openmedis.pl](mailto:kontakt@openmedis.pl)

Product code: MA00680



Life size model of a human brain, can be divided in the medial plane along the longitudinal fissure. It consists of 9 parts: frontal and parietal lobes, temporal and occipital lobes, the brain stem, the cerebellum and the basilar artery. It shows also the arterial blood supply and the important anatomical structures in great detail. On base tray.  
Size: 17 x 15 x 16 cm, weight: approx. 1.7 kg

## Model of the brain regions, 4 parts, 2 times the size

**Price inquiry:** +48 605999769, [kontakt@openmedis.pl](mailto:kontakt@openmedis.pl)

Product code: MA02181



The twice enlarged brain model shows the numbered and color-coded parts of the brain. Featured are:

- frontal lobe,
- parietal lobe,
- occipital lobe,
- temporal lobe,
- motor cortex
- somatosensory cortex
- limbic cortex
- cerebellum,
- brainstem

Twelve cranial nerves and additional functions are numbered **specifications:**

- dimensions: 36cm x 28cm x 20cm
- advanced painting
- delivered based on



## Brain model, life size, 5 parts

**Price inquiry:** +48 605999769, [kontakt@openmedis.pl](mailto:kontakt@openmedis.pl)

Product code: MA02262



This life-size brain model presents important landmarks and areas of the cerebral cortex. The right half is painted so that four brain lobes can be distinguished:

- parietal
- occipital
- temporal
- leading

The left half can be divided into four parts:

- anterior and parietal
- temporal and occipital
- brainstem
- cerebellum

It is painted so that you can see 5 areas of the cerebral cortex:

- motor cortex
- sensitive bark
- visual cortex
- motor center (Broca area)
- auditory cortex
- Wernicke center

### specifications:

- weight: approx.1.5 kg

## Human Brain Multiple Frontal Sections

**Price inquiry:** +48 605999769, [kontakt@openmedis.pl](mailto:kontakt@openmedis.pl)

Product code: MA00740



The Human Brain in Multiple Frontal (Coronal) Sections offers an innovative way to study the structure of the brain. Because of the three-dimensional characteristics of the adult brain, the appearance of gross neuronal structures differs depending on the plane of section. Current diagnostic tests available allow for various views of structures in the same patient. Given that neurologic anatomical markers are often used to confirm suspected diagnoses, students in Health Sciences must become adept at deciphering neurologic structures from various views. Until recently, proper models of the human brain in frontal (coronal) sections have not been available. We are proud to offer the Human Brain in frontal (coronal) section, which has been created in consultation with Cara Davies, Ph.D. Discreet built-in magnets and push-fit mating surfaces make it easy to fit and hold sections of the brain firmly together.

## Human Brain, actual cast

**Price inquiry:** +48 605999769, [kontakt@openmedis.pl](mailto:kontakt@openmedis.pl)

Product code: MA00742



This Human Brain is molded and cast from an actual specimen. Custom-formulated resin and the production process permit us to represent a level of accuracy and detail necessary for anatomy instruction. The left and right hemispheres are separated, allowing for an interior view of the corpus callosum and cingulate gyrus, as well as the hypothalamus, pons, and cerebellum. Two different models available, each fits in a specific skull. Skulls not included. Fits into our male skull model 4710.

## Sensory organs

**Price inquiry:** +48 605999769, [kontakt@openmedis.pl](mailto:kontakt@openmedis.pl)

Product code: MA02190



This unique model has been specially developed to understand the five senses - sight, smell, taste, hearing and balance - with related nerves. The model consists of a full-size part of the skull with a removable eye and a cut off tongue. Parts of the skull are open to ensure visibility of every important nerve. The cranial nerve is elastic to allow the underlying temporal nerve to be exposed. The bone elements are marked, the model is supplied with the nomenclature and an 18-minute audio CD (both in English).

### specifications:

- dimensions: 19cm x 15cm x 15cm
- weight: approx. 0.5 kg
- advanced painting
- delivered based on

## Brain Pathologies

Price: 162.36 EUR + shipping cost

Product code: MA04002

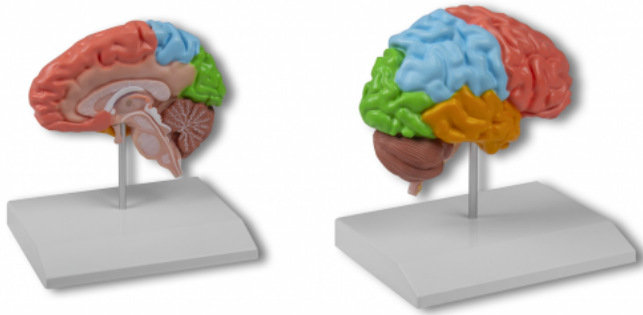


This life size model depicts 3 different pathologies that involve the vascular system of the brain, including arteriovenous malformations (called AVM), in which the blood vessels are tangled together rather than forming a normal circuit. Other featured conditions include a cerebral aneurysm and a cerebrovascular hemorrhage (stroke).

## Half-brain model, life-size

**Price inquiry:** +48 605999769, [kontakt@openmedis.pl](mailto:kontakt@openmedis.pl)

Product code: AM02581



This model shows the main landmarks of the brain in well-represented colors. It is painted so that the four lobes of the brain can be distinguished: the frontal and lateral lobes, and the temporal and occipital lobes.

## Spinal Cord, 6 times full-size

Price: 670.35 EUR + shipping cost

Product code: MA00734



This model shows a segment of the upper thoracic spinal cord, laterally and longitudinally divided showing spinal nerve roots. Delivered on baseboard.

Size: 35.5 x 27 x 27 cm, weight: 0.75 kg





## Cerebral falx model

**Price inquiry:** +48 605999769, [kontakt@openmedis.pl](mailto:kontakt@openmedis.pl)

Product code: MA02582



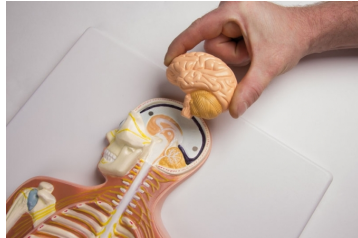
This model represents a cerebral falx. It shows the orifices of the sternal veins, arachnoid villi, superior and inferior sagittal sinus and straight sinus.



## Nervous System, 1/2 life-size

**Price inquiry:** +48 605999769, [kontakt@openmedis.pl](mailto:kontakt@openmedis.pl)

Product code: MA00730



This approximately half life-size relief model shows a general view of the peripheral and central human nervous system: the head is open to remove a brain half with cerebellum; the pathway of the main nerves is well illustrated in relation to the skeleton. Mounted on board.

Size: 90 x 31 x 12 cm, weight: 4.3 kg





## Neurovascular skull with brain

**Price inquiry:** +48 605999769, [kontakt@openmedis.pl](mailto:kontakt@openmedis.pl)

Product code: MA01069



The three part skull shows the main skull nerves and arteries. The brain has 8 parts and is made of soft, tissue like material.

Size: 17.5 x 16.5 x 22 cm

## Neuro-Anatomical Brain, 4-part, 2 times life size

**Price inquiry:** +48 605999769, [kontakt@openmedis.pl](mailto:kontakt@openmedis.pl)

Product code: MA02179



Model twice enlarged, divided into 4 parts. The frontal lobes and brainstem are removed.

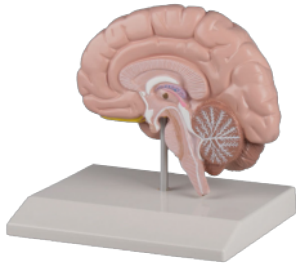
### **specifications:**

- dimensions: 36cm x 28cm x 20cm
- advanced painting
- delivered based on

## Right cerebral hemisphere

**Price inquiry:** +48 605999769, [kontakt@openmedis.pl](mailto:kontakt@openmedis.pl)

Product code: MA02172



A life-size model of the right cerebral hemisphere with the cerebellum and brainstem shown.

### specifications:

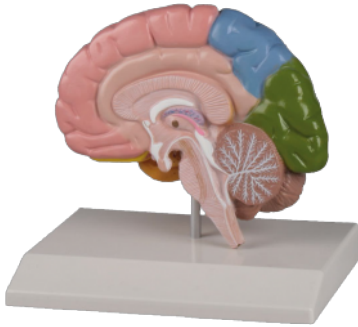
- dimensions: 16cm x 13cm x 18cm
- weight: 0.3 kg
- advanced painting
- delivered based on



## Right cerebral hemisphere

**Price inquiry:** +48 605999769, [kontakt@openmedis.pl](mailto:kontakt@openmedis.pl)

Product code: MA02171



Life-size model of the right cerebral hemisphere. The brain regions are colored. The model also shows the cerebellum and brainstem.

### specifications:

- dimensions: 16 cm x 13cm x 18cm
- weight: 0.3 kg
- advanced painting
- delivered based on

## Brain Section

**Price inquiry:** +48 605999769, [kontakt@openmedis.pl](mailto:kontakt@openmedis.pl)

Product code: MA00744



An enlarged and very detailed section through the right half of the brain including a portion of the skull. The pia mater has been removed. It is double sided and finely colored. One surface is on the median line, including a section of the falx cerebri. A sagittal cut on the reverse exposes the lateral ventricle. There are 49 references on the model, identified on an accompanying key card. Mounted on a stand.

Size: 25 x 18 x 12 cm

## Human Nervous System Model Set "Physiology of Nerves"

**Price inquiry:** +48 605999769, [kontakt@openmedis.pl](mailto:kontakt@openmedis.pl)

Product code: MA07960



The Physiology of Nerves series displays the basic structures of the human nervous system. Each of the five sections of the nerve model shows a plastic colored relief model of the main synapse variations. All sections of the nerve physiology series can magnetically attach to the illustrated base which depicts the neural components in vivid colors. Each nerve section is also available separately. The nerve physiology set contains the following sections : 1. Neuron Cell Body: Typical neuron body with cell organelles, for example mitochondria and many other characteristics of human cell, are visible through a removable transparent cover. The edge of the cell body also shows the synapses of connected neurons. 2. Myelin Sheaths of the CNS :This model shows the glial cells which build the insulating layer around the axons of the central nervous system. 3. Schwann Cells of the PNS: Depicts a Schwann cell with sectioned core. 4. Motor End :Plate Neuromuscular junction with striated muscle fibre is depicted. 5. Synapse: Featuring the endoplasmic reticulum, mitochondria and the membranes of the synaptic gap. The nerve physiology nerve series also depicts 5 smaller relief models of the main synapse variations. The nerve set is a great tool for teaching the anatomy and physiology of the human nervous system. Every original 3B Scientific® Anatomy Model gives you direct access to its digital twin on your smartphone, tablet or desktop device. Enjoy using the exclusive virtual anatomy content with the following features:

- Freely rotate your digital model and zoom in and out
- Display hotspots and their anatomical structures
- Augmented Reality (AR) feature starts your virtual anatomy model
- Anatomy Quiz function to test and improve your anatomical knowledge with instant results and final score evaluation
- Drawing function that allows image customization with save and share function
- Useful Notes function to help you with your personal learning
- Possibility to learn both male and female anatomy
- Easy access to 3D content both online and offline
- Available in 11 languages

To get started, simply scan the QR-code located on your 3B Scientific® Anatomical Model, download the new 3B Smart Anatomy app and step into the virtual world of Human Anatomy. [Click here to learn more.](#)