

## Skeleton of foot with tibia and fibula insertion, flexible

**Price inquiry:** +48 605999769, [kontakt@openmedis.pl](mailto:kontakt@openmedis.pl)

Product code: MA01054



A life-size elastic model of the human foot with fragments of the lower leg bones. Individual bones have been connected with a special elastic band, which makes this model very mobile. It is a feature that distinguishes this model from other similar products available on the market. Its design also allows for translational and anatomical movements in individual foot joints, and due to the presence of fragments of the lower leg bones, also movements in the upper ankle joint. Anatomical models constructed in such a way are perfect learning aid for physiotherapists, manual therapists, doctors and medical students.

### The model presents:

- distal fragments of the lower leg bone (tibia and fibula),
- tarsal bones (talus, heel bone, wedge heel, scaphoid bone, cubic bone),
- bones of metatarsus,
- phalanges

### Additional information:

•

the using of special, elastic rubbers as joints of individual bones makes the model highly flexibley.

## Miniature Hip Joint with cross section

**Price inquiry:** +48 605999769, [kontakt@openmedis.pl](mailto:kontakt@openmedis.pl)

Product code: MA01830



These joint model in about ½ life size shows the structures of the joint as well as the major ligaments. The inner structures can be explained with the cross section mounted on the base of the model.

Size: 12 x 10 x 18 cm, weight: 0.18 kg

## Miniature Knee Joint with cross section

**Price inquiry:** +48 605999769, [kontakt@openmedis.pl](mailto:kontakt@openmedis.pl)

Product code: MA01829



These joint model in about ½ life size shows the structures of the joint as well as the major ligaments. The inner structures can be explained with the cross section mounted on the base of the model.

Size: 12 x 10 x 20 cm, weight: 0.15 kg

## A miniature set of feet with deformations

**Price inquiry:** +48 605999769, [kontakt@openmedis.pl](mailto:kontakt@openmedis.pl)

Product code: MA02647



The model shows 3 types of feet: normal foot, flat foot and arched foot. Approximately  $\frac{1}{2}$  life-size model. The feet are cut on the sides and show bones, muscles and ligaments at the base. Only available as a set.

One foot size: 12 x 5 x 6 cm, weight: 0.6 kg



## Foot Anatomy, 9 parts

**Price inquiry:** +48 605999769, [kontakt@openmedis.pl](mailto:kontakt@openmedis.pl)

Product code: MA02426



This 9-piece model shows vital foot structures such as muscles, nerves, blood vessels and ligaments.

### Specification:

- Size: 23 x 13 x 10 cm
- Weight: 0.7 kg

## Hip-Implant-Model

**Price inquiry:** +48 605999769, [kontakt@openmedis.pl](mailto:kontakt@openmedis.pl)

Product code: MA01203



The model presents three lesser hip joints: healthy, diseased and implanted. All models are movable, and part of the pelvis and femur can be detached. Model delivered on the basis.

### Specification:

- Size: 34 x 12 x 19 cm
- Weight: 1.1 kg

## Knee-Implant-Model

**Price inquiry:** +48 605999769, [kontakt@openmedis.pl](mailto:kontakt@openmedis.pl)

Product code: MA01199



This impressive model shows three scaled down knee models. In addition to the healthy knee this model shows a diseased knee as well as a knee with knee implant. All models are movable, upper and lower leg can be separated. Supplied on Plexiglas stand.

Size: 34 x 11.5 x 16 cm, weight: 0.4 kg



## Skeleton of leg

**Price inquiry:** +48 605999769, [kontakt@openmedis.pl](mailto:kontakt@openmedis.pl)

Product code: MA01048



Natural casting of a human leg. Can be dismantled into femur, tibia, fibula and foot.

## Skeleton of leg with half pelvis and muscle marking

**Price inquiry:** +48 605999769, [kontakt@openmedis.pl](mailto:kontakt@openmedis.pl)

Product code: MA00840



- Natural casting of a human leg.
- 

Can be dismantled into femur, tibia, fibula and foot.

- With removable half pelvis.
- With marking of the muscle origins and insertion points.

## Lower limb model with half pelvis, flexible foot and muscle markings

**Price inquiry:** +48 605999769, [kontakt@openmedis.pl](mailto:kontakt@openmedis.pl)

Product code: MA02286



A natural cast of a human leg. It can be dismantled for the femur, tibia, fibula and foot. With a removable half of the pelvis. Marked on muscle beginnings and attachment points. Similar to THIS model, but with a rubber foot for increased mobility.

### Specifications:

- weight: 1.3 kg

## **Skeleton of foot with tibia and fibula insertion, flexible and numbered**

**Price inquiry:** +48 605999769, [kontakt@openmedis.pl](mailto:kontakt@openmedis.pl)

Product code: MA02290



True to life casting of a human foot with tibia and fibular insertion. The foot is movable mounted on rubber and the rolling motion can therefore be demonstrated admirably. With bone numbering.

## Muscles and tendons of the foot

**Price inquiry:** +48 605999769, [kontakt@openmedis.pl](mailto:kontakt@openmedis.pl)

Product code: AM03896



This life-size model of a right human foot shows the anatomy of the musculoskeletal system in detail and is a great aid to understanding and learning the function of muscles and ligaments.

Shown are the major ligaments and muscles: Extensor hallucis longus and brevis, Extensor digitorum longus and brevis, Fibularis peroneus tertius and brevis, Fibularis peroneus longus and brevis, Abductor hallucis, Digitorum pedis, Flexor digitorum longus and brevis, Tibialis posterior, Flexor digitorum longus, Flexor hallucis longus and Calcaneus muscle. Lumbricales pedis I-IV, Flexor digiti minimi brevis, Abductor digiti minimi. The following retinacula can be seen in the model: Ret. musculorum extensorum inferius, Ret. musculorum fibularium, Ret. musculorum flexorum.

The muscles and tendons are made of soft material.

## Right foot model with magnetic bones

**Price inquiry:** +48 605999769, [kontakt@openmedis.pl](mailto:kontakt@openmedis.pl)

Product code: MA02292



Properly attached magnets help students assemble and understand the complex structures of the bones of the foot and their joints. All bones of this model can be separated, except for the phalanges.

### Specification:

- Supplied with base.
- Weight: 0.4 kg

## Longitudinal section- model knee

**Price inquiry:** +48 605999769, [kontakt@openmedis.pl](mailto:kontakt@openmedis.pl)

Product code: MA00839



Frontal longitudinal section of the human knee joint. The bone structure, meniscuses, joint cartilage, synovial membrane and articular ligaments are represented in colour.

Natural size.

Size: 19 x 8 x 4 cm, weight: 0.3 kg

## Hip joint with resurfacing implant

**Price inquiry:** +48 605999769, [kontakt@openmedis.pl](mailto:kontakt@openmedis.pl)

Product code: MA01204



This hip joint in life size shows a “Birmingham Hip”. The implants can be removed to allow the doctor to explain the function to the patient. The model can easily be removed from the stand and disassembled. Comes on Plexiglass stand.

Size: 16 x 13 x 29 cm, weight: 0.9 kg



## Hip Joint, life size, with muscles

**Price inquiry:** +48 605999769, [kontakt@openmedis.pl](mailto:kontakt@openmedis.pl)

Product code: MA00908



Human hip joint in life size with all important muscles and ligaments. The joint has a limited movability. With educational card German/English.

On Stand.

Size: 13 x 13 x 24 cm, weight: 0.7 kg

## Hip joint with ligaments with stand

**Price inquiry:** +48 605999769, [kontakt@openmedis.pl](mailto:kontakt@openmedis.pl)

Product code: MA00688



Natural casting of a human hip joint. The femoral stump is retained in the hip joint by the ligamentary apparatus. The ligamentary apparatus with the iliofemoral ligament, ischiofemoral ligament and pubofemoral ligament allow demonstration of the movements of the hip joint. Flexion and retroversion (extension), abduction and adduction and to a certain extent also outer and inner rotation.

With removable stand.



## Knee model with Endoprosthesis

**Price inquiry:** +48 605999769, [kontakt@openmedis.pl](mailto:kontakt@openmedis.pl)

Product code: MA00916



This life size knee model is made of transparent plastic and shows graphically the position and function of a knee endoprosthesis.

The reproduced prosthesis can be removed and replaced from the model, allowing to explain the procedure very clearly during patient education and preparation of operation.

The Endoprosthesis is made of metal and almost corresponds to a real prosthesis in weight and size.

Due to the transparent bones the position and function of the prosthesis is clearly visible.

## Knee Joint, life size, with muscles

**Price inquiry:** +48 605999769, [kontakt@openmedis.pl](mailto:kontakt@openmedis.pl)

Product code: MA00903



Human knee joint in life size with all important muscles and ligaments (collateral ligaments, meniscus, crucial ligaments, patellar tendon).

The joint is not movable. With educational card German/English.

On Stand.

Size: 8 x 8 x 24 cm, weight: 0.8 kg

## Knee joint with ligaments with stand

**Price inquiry:** +48 605999769, [kontakt@openmedis.pl](mailto:kontakt@openmedis.pl)

Product code: MA00687



Natural casting of a human knee joint. With stumps of femur and lower leg. The insertion tendons of the straight muscle of the thigh, kneecap with patellar tendons, lateral ligaments, meniscuses and cruciate ligaments are manufactured from elastic synthetic material. The principal movements of the knee joint, such as flexion and extension and outer and inner rotation can be demonstrated. With removable stand.



## Foot replica for nursing practice

**Price inquiry:** +48 605999769, [kontakt@openmedis.pl](mailto:kontakt@openmedis.pl)

Product code: MA01353



This first class casts of real human female feet with start of lower leg is perfect for nursing practice, bandaging or washing. Soft, tissue-like material with carefully reproduced separate toes makes the model perfect for hygienic practice in diabetes. Of course it is also suitable for presentation of orthoses or socks.



## Foot skeleton on Nylon

**Price inquiry:** +48 605999769, [kontakt@openmedis.pl](mailto:kontakt@openmedis.pl)

Product code: MA02289



This foot skeleton is very handy for those who want to study single bones in detail. Because of the loose mounting on nylon wire all bones can be separated and studied individually. Nevertheless they always stay in correct anatomical position within the foot.

## Foot skeleton, block model

**Price inquiry:** +48 605999769, [kontakt@openmedis.pl](mailto:kontakt@openmedis.pl)

Product code: MA01055



- Natural one-piece casting of a human foot.
- Representation of all structures and anatomical details.
- Particularly economically priced.

## Flat foot, pes planus

**Price inquiry:** +48 605999769, [kontakt@openmedis.pl](mailto:kontakt@openmedis.pl)

Product code: MA01163



This life size model of a right human foot is medially opened and shows bones, joints, ligaments, fatty tissue and muscles.

The start of lower leg is also represented as cross-section and shows tibia and fibula as well as the corresponding muscles, ligaments, vessels and fatty tissue.

Size: 26 x 10.5 x 13.5 cm, weight: 0.6 kg

## Hollow foot, pes cavus

**Price inquiry:** +48 605999769, [kontakt@openmedis.pl](mailto:kontakt@openmedis.pl)

Product code: MA01514



This life size model of a right human foot is medially opened and shows bones, joints, ligaments, fatty tissue and muscles. The start of lower leg is also represented as cross-section and shows tibia and fibula as well as the corresponding muscles, ligaments, vessels and fatty tissue.

Size: 24.5 x 10.5 x 13.5 cm, weight: 0.6 kg

## **Skeleton of foot with tibia and fibula insertion**

**Price inquiry:** +48 605999769, [kontakt@openmedis.pl](mailto:kontakt@openmedis.pl)

Product code: MA01052



- Natural casting of a human foot mounted on wire.
- With tibia and fibula insertion.
- Without stand.

## Foot skeleton with ligaments

**Price inquiry:** +48 605999769, [kontakt@openmedis.pl](mailto:kontakt@openmedis.pl)

Product code: MA01490



Life size foot skeleton with representation of the ligamentous apparatus with related muscles. All bones of the foot as well as start of tibia and fibula are represented separately. The following muscles with ligaments are present: Flexor digitorum longus muscle, Posterior tibial muscle, Flexor hallucis longus muscle, Peroneus longus muscle, Peroneus brevis muscle, Extensor hallucis longus muscle, Extensor digitorum longus muscle, Tibialis anterior muscle, Superior fibular retinaculum, Inferior extensor retinaculum of foot, Soleus muscle and Flexor digitorum brevis muscle. With removable stand and Key Card in Latin, German and English.

## Skeleton of foot, numbered

**Price inquiry:** +48 605999769, [kontakt@openmedis.pl](mailto:kontakt@openmedis.pl)

Product code: MA01051

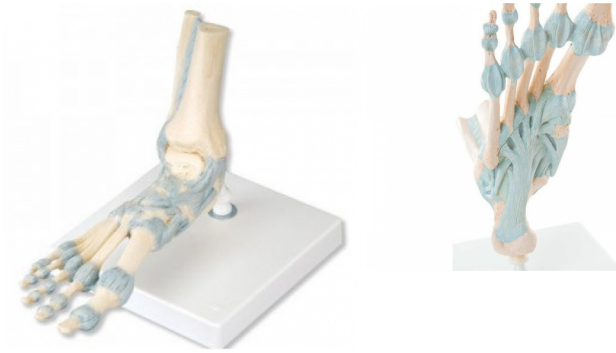


- Natural casting of a human foot. All bones mobile mounted on wire.
- Model as KD6050, but with bone numbering.
- Without stand.

## Foot Skeleton Model with Ligaments

**Price inquiry:** +48 605999769, [kontakt@openmedis.pl](mailto:kontakt@openmedis.pl)

Product code: MA01511



This detailed foot skeleton model displays numerous important ligaments and tendons including the Achilles and peroneus longus tendons of the ankle. The foot skeleton consists of the foot bone and lower portions of the tibia and fibula, including the introsseous membrane found between them. All the anatomically important ligaments and tendons of the foot are shown, large and small. This is a high quality anatomical replica of the human foot and ankle. Every original 3B Scientific® Anatomy Model gives you direct access to its digital twin on your smartphone, tablet or desktop device. Enjoy using the exclusive virtual anatomy content with the following features:

- Freely rotate your digital model and zoom in and out
- Display hotspots and their anatomical structures
- Augmented Reality (AR) feature starts your virtual anatomy model
- Anatomy Quiz function to test and improve your anatomical knowledge with instant results and final score evaluation
- Drawing function that allows image customization with save and share function
- Useful Notes function to help you with your personal learning
- Possibility to learn both male and female anatomy
- Easy access to 3D content both online and offline
- Available in 11 languages

To get started, simply scan the QR-code located on your 3B Scientific® Anatomical Model, download the new 3B Smart Anatomy app and step into the virtual world of Human Anatomy. [Click here to learn more.](#)



## Common Foot Problems

**Price inquiry:** +48 605999769, [kontakt@openmedis.pl](mailto:kontakt@openmedis.pl)

Product code: MA01850



An incredibly realistic, life-size, handpainted foot replica moulded from an actual human foot. Abnormalities include: bunion, callus, corn, inflamed toenail, open sore, and dry, cracked skin. Great for use when working with diabetic patients!

Size: 23 x 9.5 x 11.5 cm

## Skeleton of leg with muscle marking

**Price inquiry:** +48 605999769, [kontakt@openmedis.pl](mailto:kontakt@openmedis.pl)

Product code: MA01049



Natural casting of a human leg.

Can be dismantled into femur, tibia, fibula and foot. With marking of the muscle origins and insertion points.

## Skeleton of foot

**Price inquiry:** +48 605999769, [kontakt@openmedis.pl](mailto:kontakt@openmedis.pl)

Product code: MA01050



- Natural casting of a human foot. All bones mobile mounted on wire.
- Without stand.

## **Skeleton of foot with tibia and fibula insertion, numbered**

**Price inquiry:** +48 605999769, [kontakt@openmedis.pl](mailto:kontakt@openmedis.pl)

Product code: MA01053



- Natural casting of a human foot mobile mounted on wire.
- With tibia and fibula insertion.
- Without stand.

## Foot skeleton with ligaments

**Price inquiry:** +48 605999769, [kontakt@openmedis.pl](mailto:kontakt@openmedis.pl)

Product code: MA00838

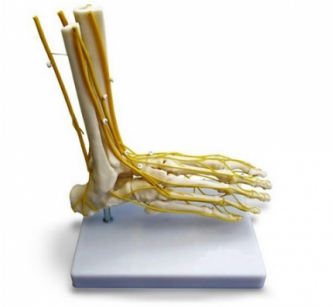


Foot skeleton flexibly mounted on wire. This functional model shows the important ligaments of the foot.  
Size: 25 x 8,1 x 20 cm, weight: 0.5 kg

## Neuro Foot

**Price inquiry:** +48 605999769, [kontakt@openmedis.pl](mailto:kontakt@openmedis.pl)

Product code: MA00837



- Life size model of the right foot with all major nerves depicted, shown on both dorsal and plantar surfaces.
- 

Foot can be removed and placed on the stand upside down to facilitate viewing of the plantar surface.

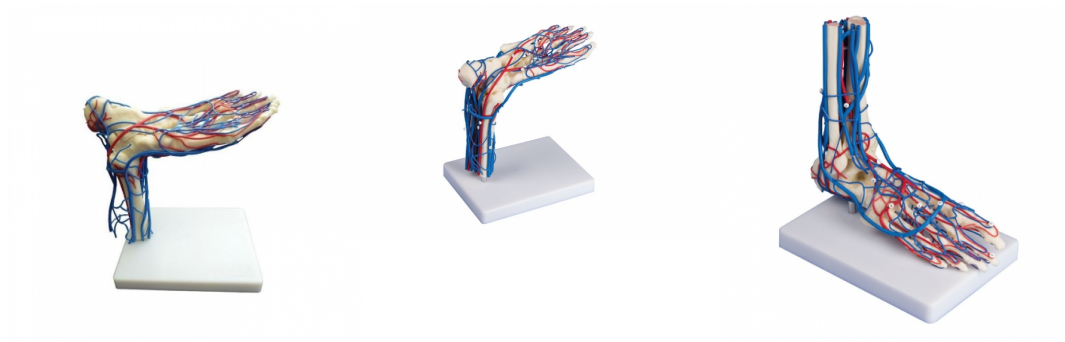
- Mounted on a stand with keycard.
- Size: 22 x 15 x 25 cm



## Vascular Foot

**Price inquiry:** +48 605999769, [kontakt@openmedis.pl](mailto:kontakt@openmedis.pl)

Product code: MA00836



- Life size model of the right foot with all major veins and arteries depicted.
- 

The circulatory system is shown on both dorsal and plantar surfaces.

- Foot can be removed and placed on the stand upside down to facilitate viewing of the plantar surface.
- Mounted on a stand.
- Size: 22 x 15 x 25 cm



## Hip joint with sacrum and ligaments with stand

**Price inquiry:** +48 605999769, [kontakt@openmedis.pl](mailto:kontakt@openmedis.pl)

Product code: MA02324



Natural casting of a human hip joint. The femoral stump is retained in the hip joint by the ligamentary apparatus. The ligamentary apparatus with the iliofemoral ligament, ischiofemoral ligament and pubofemoral ligament allow demonstration of the movements of the hip joint. Flexion and retroversion (extension), abduction and adduction and to a certain extent also outer and inner rotation. With stand and sacrum.

## Skeleton of leg with half pelvis and flexible foot

**Price inquiry:** +48 605999769, [kontakt@openmedis.pl](mailto:kontakt@openmedis.pl)

Product code: MA01477



Natural casting of a human leg. Can be dismantled into femur, tibia, fibula and foot. Model with a rubber-mounted foot for increased possibility of movement.

## Skeleton of leg with half pelvis

**Price inquiry:** +48 605999769, [kontakt@openmedis.pl](mailto:kontakt@openmedis.pl)

Product code: MA00389



Natural casting of a human leg. Can be dismantled into femur, tibia, fibula and foot. With removable half pelvis.