

Surgical cat simulator

Price inquiry: +48 605999769, kontakt@openmedis.pl

Product code: MZ02349



This model is a hybrid full cat anatomical replica with synthetic muscles, tendons and bones.

Canine Surgical Model

Price inquiry: +48 605999769, kontakt@openmedis.pl

Product code: MZ02296



The presented model of the dog is a high-quality phantom providing the opportunity to learn and train repeatable surgical procedures in the so-called high fidelity. It is equipped with configurable pathologies integrated with total vascularization. Provides veterinary students and surgeons with a realistic experience of situations often encountered in operating rooms.

Specification:

1. Standard Abdominal Procedures

- Gastrotomy with foreign body removal
- Splenectomy
- Liver lobe biopsy
- Partial liver lobectomy
- Enterotomy with foreign body removal
- Intestinal resection with anastomosis
- Small intestinal biopsy
- OVH (replaceable)
- Cystotomy with stone removal

2. Technical Procedures

- Cephalic venipuncture
- Cephalic vein catheterization
- External jugular venipuncture
- External jugular catheterization
- Orotracheal intubation
- Nasoesophageal tube placement
- Stomach tube placement
- Thoracocentesis
- Cystocentesis
- Chest tube placement
- Urinary catheterization
- Upper GI endoscopy
- Lower GI endoscopy

- Cystoscopy

3. Other Surgical Procedures

- Tracheostomy
- Cutaneous suturing
- Muscular suturing
- Surgical hemostasis
- Intra-muscular injections

4. Custom Procedures

- GDV
- Gastropexy
- Diaphragmatic hernia repair
- Chest tube placement

Canine Abdominal Skin Plate

Price inquiry: +48 605999769, kontakt@openmedis.pl

Product code: MZ02340

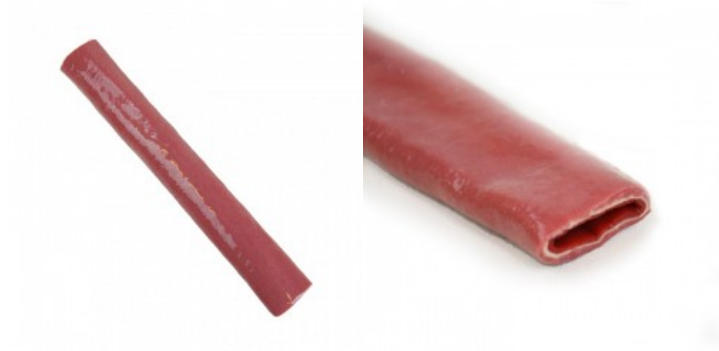


- dimensions: 25.5 x 25.5 x 17.5 cm
- weight: approx. 3 kg

Canine Bowel, 15 cm

Price inquiry: +48 605999769, kontakt@openmedis.pl

Product code: MZ02341



High-quality model of the dog's intestine, made of the most advanced materials.

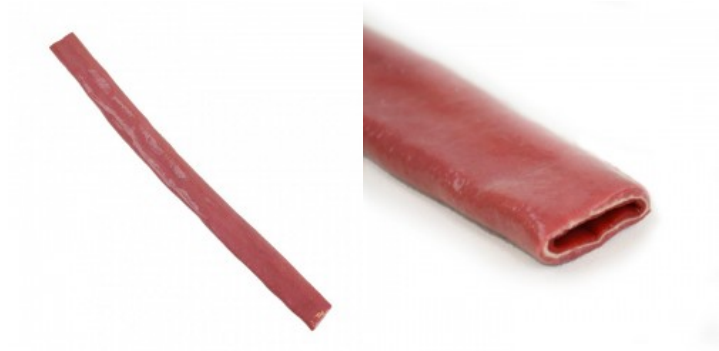
Specification:

- weight: 0.5 kg
- dimensions: 2.5 x 2.5 x 15 cm

Canine Bowel, 30 cm

Price inquiry: +48 605999769, kontakt@openmedis.pl

Product code: MZ02342



High-quality model of the dog's intestine, made of the most advanced materials.

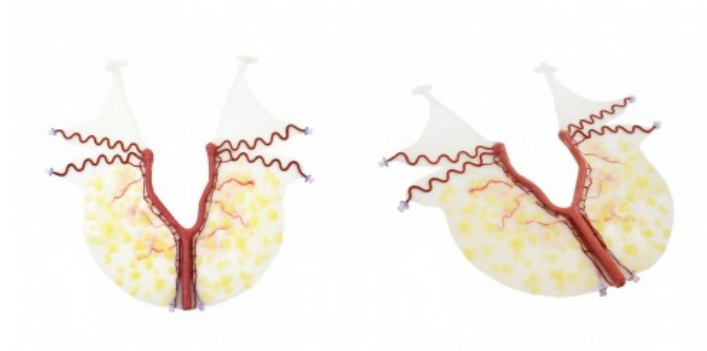
Specification:

- weight: 0.5 kg
- dimensions: 2.5 x 2.5 x 30 cm

Canine Uterus (Vascularized)

Price inquiry: +48 605999769, kontakt@openmedis.pl

Product code: MZ02337



A realistic model of the dog's uterus made of flexible material. It contains vascularity. Can be used as a replacement for the dog surgical simulator.

- dimensions: 25.5 x 20 x 12.5 cm
- weight: 1.3 kg

Canine Urinary Bladder (Vascularized)

Price inquiry: +48 605999769, kontakt@openmedis.pl

Product code: MZ02336



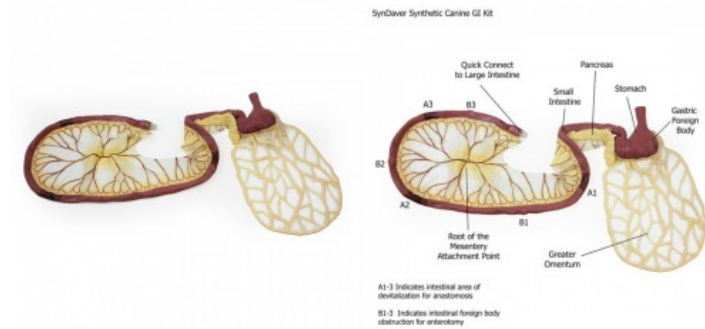
A realistic model of a dog's bladder, made of the highest quality materials. It contains vascularity. It is a replaceable element of the Surgical Dog Simulator.

- dimensions: 25.5 x 20 x 12.5 cm
- weight: 1.3 kg

Canine GI Tract (Stomach, Pancreas, Intestine)

Price inquiry: +48 605999769, kontakt@openmedis.pl

Product code: MZ02344



A high-quality model of a dog's digestive tract, made of the most advanced materials.

Specification:

- weight: about 2.5 kg
- dimensions: 30 x 30 x 15 cm

Canine Liver Lobe (Vascularized)

Price inquiry: +48 605999769, kontakt@openmedis.pl

Product code: MZ02338



The model can be a replaceable element in the Surgical Dog Simulator.

- dimensions: 25.5 x 20 x 20 cm
- weight: 2.2 kg

Canine Forelimb Skin

Price inquiry: +48 605999769, kontakt@openmedis.pl

Product code: MZ02343



The model includes a flap of dog forelimb for use with the Surgical Dog Simulator to simulate a digital heart rate and perform a blood draw or IV line setting. It includes a vascular system that can be perfused and a circulatory pump supplied with a surgical dog. This model is a disposable item intended for use with a surgical dog and is not sold with the forelimbs as pictured.

Specification:

- weight: 1 kg
- dimensions: 12.5 x 12.5 x 5 cm

Canine Neck Skin (Vascularized)

Price inquiry: +48 605999769, kontakt@openmedis.pl

Product code: MZ02345



The model includes a flap of skin on a dog's neck, intended for use with the Surgical Dog Simulator to simulate a digital heart rate and perform a blood draw or IV line setting. It includes a vascular system that can be perfused and a circulatory pump supplied with a surgical dog. This model is an item intended for use with a surgical dog and is not sold with a dog head and neck as pictured.

Specification:

- weight: approx. 1.5 kg
- dimensions: 25 x 20 x 12.5 cm

Canine Spleen (Vascularized)

Price inquiry: +48 605999769, kontakt@openmedis.pl

Product code: MZ02335



A realistic model of a spleen of a dog, made of the highest quality materials. It contains vascularity.

- dimensions: 25.5 x 20 x 12.5 cm
- weight: 1.3 kg

Canine Spleen w/Pathologies (Vascularized)

Price inquiry: +48 605999769, kontakt@openmedis.pl

Product code: MZ02339



A realistic model of a dog's spleen with pathologies, made of the highest quality materials. It contains vascularity.

- dimensions: 25.5 x 20 x 12.5 cm
- weight: 1.3 kg

Canine Abdominal Surgical Model

Price inquiry: +48 605999769, kontakt@openmedis.pl

Product code: MZ02297



The presented model of the canine abdominal is a high-quality phantom providing the opportunity to learn and train repeatable surgical procedures in the so-called high fidelity. It is equipped with configurable pathologies integrated with total vascularization. Provides veterinary students and surgeons with a realistic experience of situations often encountered in operating rooms.

Specification:

1. Standard Abdominal Procedures

- Gastrotomy with foreign body removal
- Splenectomy
- Liver lobe biopsy
- Partial liver lobectomy
- Enterotomy with foreign body removal
- Intestinal resection with anastomosis
- Small intestinal biopsy
- OVH (replaceable)
- Cystotomy with stone removal

Canine Airway Trainer (basic)

Price inquiry: +48 605999769, kontakt@openmedis.pl

Product code: MZ02298



The phantom allows you to perform extremely faithful intubation and train the ability to supply the upper respiratory tract. Features the highly realistic anatomy of a dog's mouth and upper respiratory tract. It will allow students to experience realistic intubation sensations that take place in real situations.

Canine Airway Trainer (Deluxe)

Price inquiry: +48 605999769, kontakt@openmedis.pl

Product code: MZ02299



The phantom allows you to perform extremely faithful intubation and train the ability to supply the upper respiratory tract. Features the highly realistic anatomy of a dog's mouth and upper respiratory tract. It will allow students to experience realistic intubation sensations that take place in real situations. Unlike the "basic version", this model additionally includes vascularized skin of the neck, realistic bifurcated trachea and lungs.