





Skull and horn Merino sheep ram (Ovis aries)

Price inquiry: +48 605999769, kontakt@openmedis.pl

Product code: MZ03023



High quality skull reproduction. 2part model, lower jaw removable. Skull length appr. 29 cm, Horn width appr. 60 cm, individual horns 97 cm and 98 cm long. Horns supplied losely.

Skull, domestic sheep, female (*Ovis aries*)

Price inquiry: +48 605999769, kontakt@openmedis.pl

Product code: MZ02012



High quality skull reproduction. 2part model, lower jaw removable. Skull length appr. 23cm. Delivery time: 14-21 workdays.

Sheep skull model, artificial

Price inquiry: +48 605999769, kontakt@openmedis.pl

Product code: MZ01982



A model of a sheep's skull made on a 1: 1 scale. It has been developed on the basis of scans of real bovine skulls together with veterinary teachers, in that it contains the most important anatomical structures needed to study the anatomy of sheep's skull. The skull also has a detachable mandible with full dentition, which can be attached to the skull at any time using magnets placed in the model.

Additional information:

- short production time approx. 3-4 days
- short delivery time
- life size, 1: 1 scale
- anatomical details
- detachable lower jaw

Sheep model, 11-parts, 1/2 life size

Price inquiry: +48 605999769, kontakt@openmedis.pl

Product code: MZ01895



Didactic model of a sheep on the base, reduced by about 2 times. Intended for educational purposes for students. It has the ability to divide into 11 separate parts of the body and organs. The model presents the muscular structure of a sheep on one side, while on the other the outer structure is visible. It is possible to divide the whole model in the sagittal section, thanks to which it presents the internal structure.

Additional features:

- Size: approx.: 38x69x76cm
- Weight: 21kg
- User manual
- Fully colored
- model on base

Sheep model, 12 parts, 2/3 life size

Price inquiry: +48 605999769, kontakt@openmedis.pl

Product code: MZ02301



A model of a sheep on the base, approx. 2/3 natural size. The model is installed on a base with wheels, and can be divided in two parts along its sagittal plane. The right part shows the outer part of the animal, and the left part presents body and limb muscles.

When two halves are separated, the left side shows the chest and the abdominal cavity with detachable organs (a lung, a kidney), and the right side of the model shows main blood vessels, the heart, the abdominal cavity wall with detachable organs, including: a stomach, a liver, a spleen, a small intestine and a uterus. The model can be divided into 12 parts.

Removable parts:

- 2 body halves, divisible in the sagittal section
- stomach (2 pieces),
- small and large intestine
- heart (2 parts)
- liver with spleen
- one limb
- lung,
- 2-part uterus (reproductive system),
- rectum, bladder, excretory system

Specification:

- Size: approx. 85x36x69 cm,
- Weight: approx. 15 kg,
- Fully colorful,
- Model on the base with wheels.

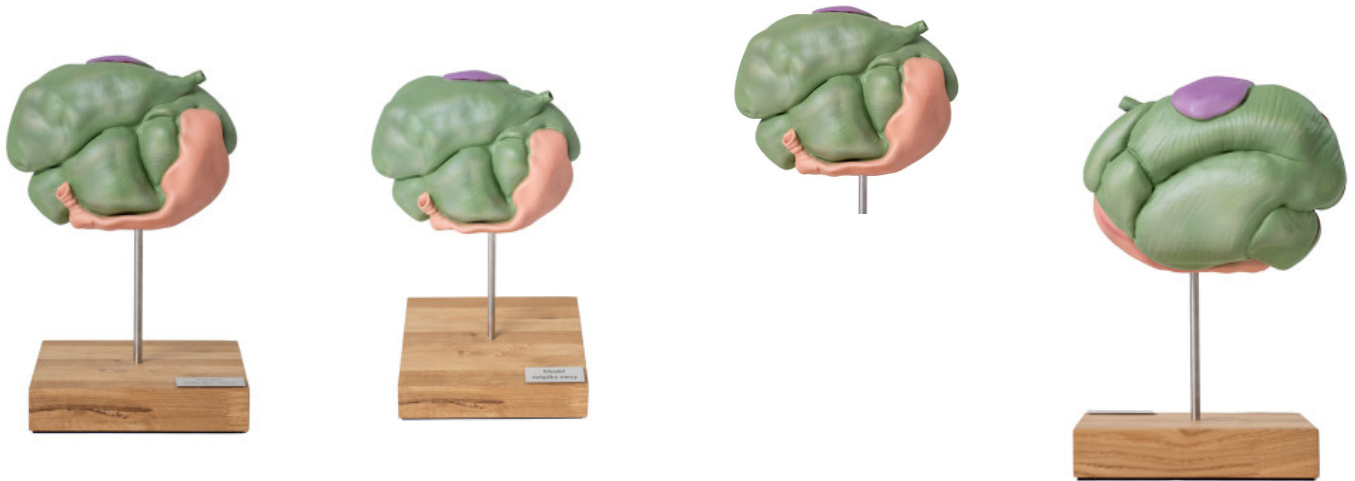




Sheep stomach model, 2 parts, 1/3 natural size

Price inquiry: +48 605999769, kontakt@openmedis.pl

Product code: MZ02412



A 1: 3 scale detailed model of a sheep stomach. It consists of 2 parts that can be separated to show the internal structure.

Application:

- Learning the anatomical structure of a sheep's stomach
- veterinary teaching
- veterinary medicine

Additional information:

- Possibility to make a model in 1: 1 scale
- The possibility of making and adapting the model to a specific specification

Sheep skeleton - Polish mountain sheep (adult female)

Price inquiry: +48 605999769, kontakt@openmedis.pl

Product code: MZ02625



Complete frame, ready for assembly

Approximate dimensions after folding:

- Height 85 cm
- Width 25 cm
- Length 110 cm
- Weight 4 kg

Sheep Skeleton Specimen

Price inquiry: +48 605999769, kontakt@openmedis.pl

Product code: M01656



This **sheep skeleton specimen** is suited for visualising the anatomical structures of a sheep and the individual bones are numbered for accurate identification.

- Real skeleton of a sheep
- Firmly mounted on a wooden base
- Delivered with plastic case to protect the bones
- Dimensions (L x W x H): **55 x 14 x 31 cm**