

Didactic horse anatomical model, 12 parts

Price inquiry: +48 605999769, kontakt@openmedis.pl

Product code: MZ01867



A reduced-size, fully colorful, didactic horse model on the base. It has the ability to divide into 12 separate parts of the body and organs. The model shows the muscular structure of the horse on one side, on the other, the external structure is visible. It is possible to divide the model in a sagittal cross-section to presents the internal structure, including the digestive system and reproductive organs of mares.

Additional features:

- Size: approx. 95x24x67cm
- Weight: 16.5 kg
- User manual

Horse's limb for palpation and X-ray examination / Radiology Limb

Price inquiry: +48 605999769, kontakt@openmedis.pl

Product code: M01642



Right Distal Forelimb

- Features a fully articulated skeleton. The bone material is radiodense allowing for visualization using radiography techniques
- Allows movement at the carpus and fetlock joints
- Has a soft silicone skin for palpation

Features include:

- The full superficial and deep flexor tendon unit which can be felt towards its insertion
- Palpable landmarks of the pastern joint
- Palpable joints including the intercarpal, radiocarpal, fetlock and coffin joints

Includes stand for clamping to a table.

Equine Theriogenology Model

Price inquiry: +48 605999769, kontakt@openmedis.pl

Product code: MZ02285



A realistic phantom in the form of a rump of a horse containing organs of the reproductive system of a mare. Intended for practices and sciences in the field of theriogenology, that is dealing with reproduction, including the physiology and pathology of the female reproductive systems of animals and the clinical practice of veterinary obstetrics, gynecology and andrology.

Specification:

- The construction of the simulator is made of epoxy resin
- Soft, durable perineum panel
- Inflatable vinyl rectum with pump
- Artificial, removable tail
- Replica of polyurethane pelvis
- Palpable soft uterus with cervix, urethra and broad ligament
- 3 sets of easily replaceable ovaries; anestrus, estrus and estrus with follicles with storage case
- Approximate dimensions: 134cm x 80cm x 80cm
- Approximate weight: 45 kg

Hoof Capsule

Price inquiry: +48 605999769, kontakt@openmedis.pl

Product code: MZ03095



Derived from CT and MR co-registered data, anatomically accurate and lifesize.

The advantages:

- 3D printed in full color, each anatomical component is individually colored.
- Hoof capsule is available separately and anchors the distal limb in the stance position.
- The series consists of four models: starting from Model 1 showing the full anatomy of the foot and comprised of 25 anatomical structures to step-by-step reduced models showing deeper structures.

Horse skull

Price inquiry: +48 605999769, kontakt@openmedis.pl

Product code: M01373



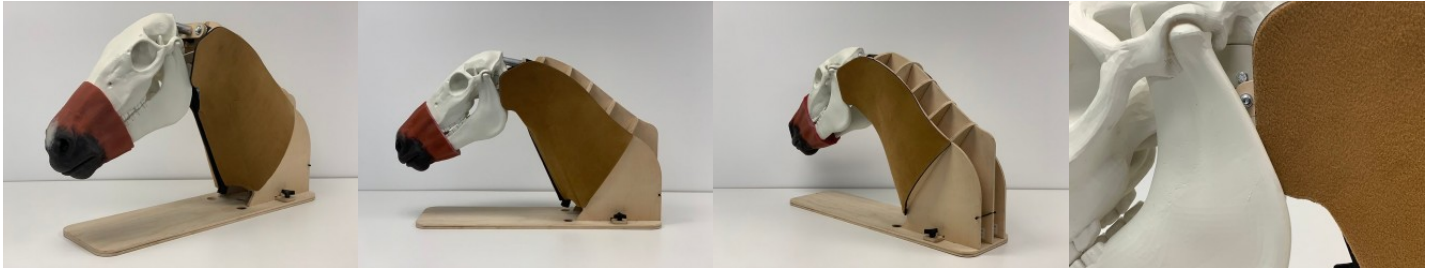
The large and slender horse skull has long, broad, tapering nasals. At the front of the mouth are large incisors, designed for cropping grass. At the back of the mouth are six large, squared molars on either side of the maxilla and the mandible. The area between the incisors and the molars is called the bar. In that space sits a canine tooth (not present in all horses). The eyes sit back far on the head, typical of grazing animals. The braincase is small. The original male specimen of this cast was a large retired police horse. 2-part skull (separate cranium & jaw).



Nasogastric Equine Intubation Model

Price inquiry: +48 605999769, kontakt@openmedis.pl

Product code: MZ02557



A realistic trainer designed for learning and training nasogastric intubation in horses. Anatomically correct structure reflects realistic treatment sensations. It allows you to perform basic surgery training routinely performed in equine colic cases to decompress the stomach and provide therapy. This model can be secured with the head facing down first to avoid inserting the tube into the trachea. The nasogastric tube can then be inserted into the nose in the ventral and medial directions. As the tube reaches the throat, there is soft resistance as the tube contacts the esophageal opening. The horse's head can be bent up and down to open the airway or esophagus. The model includes both the esophagus and the trachea to ensure proper tube placement. You can touch the nasogastric tube above the left jugular vein and feel it travel along the neck under the skin to the stomach. The model also includes dorsal ("false nostrils") and abdominal ("true nostrils").

Attention!

The photos are illustrative and the product may finally differ in appearance, e.g. colors.

The skull is produced in white or gray depending on the availability of materials.

Model of the small and large intestine of a horse

Price inquiry: +48 605999769, kontakt@openmedis.pl

Product code: MZ03881



A scaled-down set of 2 models depicting the horse's large and small intestines. The model of the small intestine shows the duodenum, jejunum, and ileum. The large intestine model should show structures such as: large colon, small colon, rectum with an anus.



Equine limbs on the base

Price inquiry: +48 605999769, kontakt@openmedis.pl

Product code: MZ02413



Exhibit showing the limbs of an adult horse. The front limb is positioned to the shoulder blade and the rear limb to the hip joint. Bones mounted on the base.



Horse Front Leg with Scapula, articulated on Base

Price inquiry: +48 605999769, kontakt@openmedis.pl

Product code: M01380



We include the scapula, humerus, forearm (fused radius and ulna), cannon bone and foot. The foot consists of the long pastern bone (or first phalanx), the short pastern bone (or second phalanx) and the coffin bone (or third phalanx). The coffin bone is enclosed by the hoof.

The horse is an unguligrade mammal. Such mammals walk on from four to only one digit (the horse's foot is really a single digit). The equivalent of the wrist or ankle joint is high above the ground. Such adaptations result in the ability to sustain high speeds.

Horse (mare) model, 16 parts, 1/3 life size

Price inquiry: +48 605999769, kontakt@openmedis.pl

Product code: MZ02519



The model shows a mare 1/3 of its life size. It is intended for teaching purposes and is mounted on a base with wheels. The model can be divided into two parts in the sagittal plane: one side shows the external anatomy and the other side shows the muscles. The left interior shows the chest and abdominal cavity with interchangeable organs. The right side shows the main blood vessels. Half of the head can be separated from the muscle half.

The model can be disassembled into 16 parts:

- right side of the head (outside)
- left side of the head (muscles)
- right side of the hull (outside)
- left side of the torso (muscles)
- left front leg
- right gluteus muscle
- Heart (2 parts)
- Left lung
- Stomach (2 parts)
- Small intestine
- Colon
- liver
- Left kidney
- spleen

*You can order a model in any size

Horse Hoof Model, 6 parts

Price inquiry: +48 605999769, kontakt@openmedis.pl

Product code: MZ01955



Didactic anatomical model of the horse's hoof with the possibility of splitting into 6 parts. Dimensions approx. 31x20x18cm. Model based.

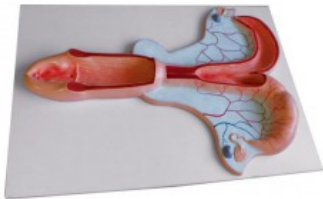




Horse/ Mare Uterus model

Price inquiry: +48 605999769, kontakt@openmedis.pl

Product code: MZ01891



Life-size model of the mare uterus on the base. It has one detachable part, the detachment of which reveals the internal structure.

Additional information:

- dimensions: approx. 79x55x8cm
- Weight: approx. 6-7kg

Horse kidney model

Price inquiry: +48 605999769, kontakt@openmedis.pl

Product code: MZ03890



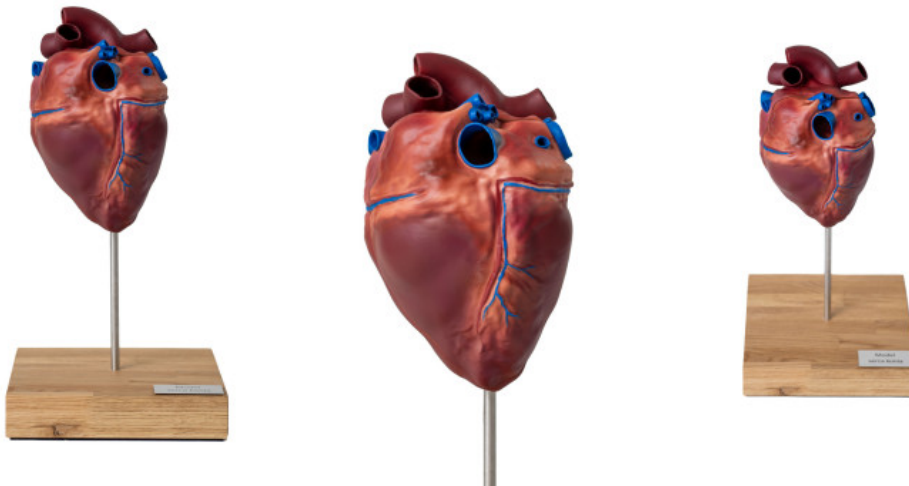
A reduced model of a horse kidney made of hard, easily washable material. Hand finished.



Horse heart model

Price inquiry: +48 605999769, kontakt@openmedis.pl

Product code: MZ03882

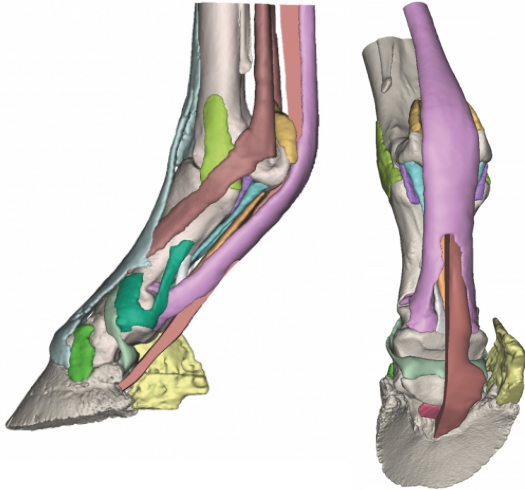


A scaled-down model of a horse's heart. It shows the correct anatomy of the horse's heart, including: 2 atria, ventricles, mouths of the main blood vessels. The model is made of hard plastic.

Foot of a horse as model - Model 3

Price inquiry: +48 605999769, kontakt@openmedis.pl

Product code: M01377



Derived from CT and MR co-registered data, anatomically accurate and lifesize. 3D printed in full color, each anatomical component is individually colored. Hoof capsule is available separately and anchors the distal limb in the stance position. The series consists of four models: starting from Model 1 showing the full anatomy of the foot and comprised of 25 anatomical structures to step-by-step reduced models showing deeper structures.

Model 3:

Similar to Model 1, but this model, with the deep digital flexor tendon sectioned, shows the tendon's relationship to the distal sesamoid bone and the impar ligament. One ungular cartilage is absent to show the collateral ligaments of the distal sesamoid bone.

Foot of a horse as model - Model 1

Price inquiry: +48 605999769, kontakt@openmedis.pl

Product code: M01375



Derived from CT and MR co-registered data, anatomically accurate and lifesize. 3D printed in full color, each anatomical component is individually colored. Hoof capsule is available separately and anchors the distal limb in the stance position. The series consists of four models: starting from Model 1 showing the full anatomy of the foot and comprised of 25 anatomical structures to step-by-step reduced models showing deeper structures.

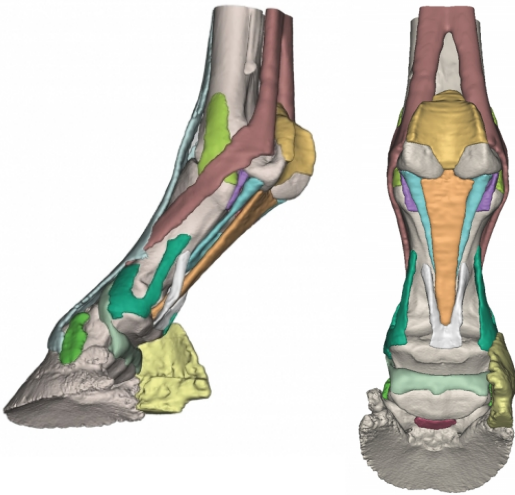
Model 1:

Structures: Third metacarpal bone; Proximal sesamoid bones; Proximal phalanx; Middle phalanx; Distal phalanx; Distal sesamoid (navicular) bone; Ungular cartilages; Collateral ligaments of the metacarpophalangeal joint; Collateral ligaments of the proximal interphalangeal joint and the abaxial palmar ligaments of the foot; Collateral ligaments of the distal interphalangeal joint; Collateral ligament of the distal sesamoid (navicular) bone; Distal sesamoidean impar ligament; Proximal scutum and intersesamoidean ligament; Cruciate sesamoidean ligament; Short sesamoidean ligaments; Oblique sesamoidean ligaments; Straight sesamoidean ligament; Axial palmar ligaments of the foot; Suspensory ligament and extensor branches; Deep digital flexor tendon; Superficial digital flexor tendon; Common digital extensor tendon.

Foot of a horse as model - Model 2

Price inquiry: +48 605999769, kontakt@openmedis.pl

Product code: M01376



Derived from CT and MR co-registered data, anatomically accurate and lifesize. 3D printed in full color, each anatomical component is individually colored. Hoof capsule is available separately and anchors the distal limb in the stance position. The series consists of four models: starting from Model 1 showing the full anatomy of the foot and comprised of 25 anatomical structures to step-by-step reduced models showing deeper structures.

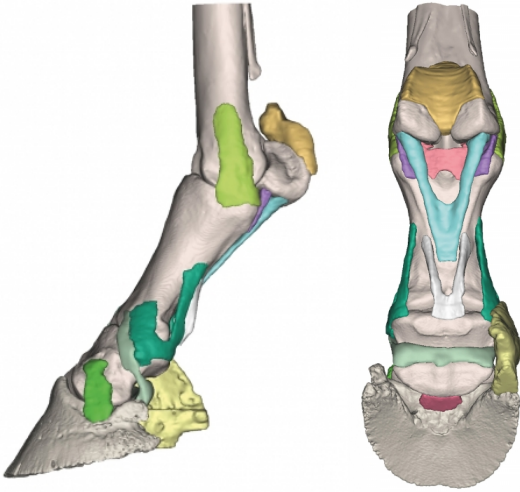
Model 2:

As Model 1, however, this model shows the proximal sesamoidean ligaments, impar ligament and the collateral ligaments of the distal sesamoid (navicular) bone.

Foot of a horse as model - Model 4

Price inquiry: +48 605999769, kontakt@openmedis.pl

Product code: M01378



Derived from CT and MR co-registered data, anatomically accurate and lifesize. 3D printed in full color, each anatomical component is individually colored. Hoof capsule is available separately and anchors the distal limb in the stance position. The series consists of four models: starting from Model 1 showing the full anatomy of the foot and comprised of 25 anatomical structures to step-by-step reduced models showing deeper structures.

Model 4:

This model, stripped of tendons and the suspensory ligament, shows the bones of the foot and their deep supporting ligaments.

Horse foot

Price inquiry: +48 605999769, kontakt@openmedis.pl

Product code: M01372



The foot consists of the long pastern bone (or first phalanx), the short pastern bone (or second phalanx) and the coffin bone (or third phalanx). The coffin bone is normally enclosed by the hoof (not included). Not shown are Ligaments, tendons, cushions and cartilage that contribute to the complicated structure of the horse's foot.

Horse Skeleton (Equus ferus caballus), Male, Specimen

Price inquiry: +48 605999769, kontakt@openmedis.pl

Product code: M01697



The real bone specimen of an adult horse is composed of approximately 252 individual bones. It represents a typical example of the order of odd-toed ungulates. The skeleton is mounted on a moveable base plate.

Length: Approx. 250 – 300 cm

Width: Approx. 60 – 70 cm

Height at withers: Approx. 140 – 170 cm

Weight: Approx. 170 – 200 kg

Horse skeleton model, unassembled, real bones

Price inquiry: +48 605999769, kontakt@openmedis.pl

Product code: MZ03891



Unassembled, loose bones of a horse skeleton. Dissected biological material. Complete skeleton.



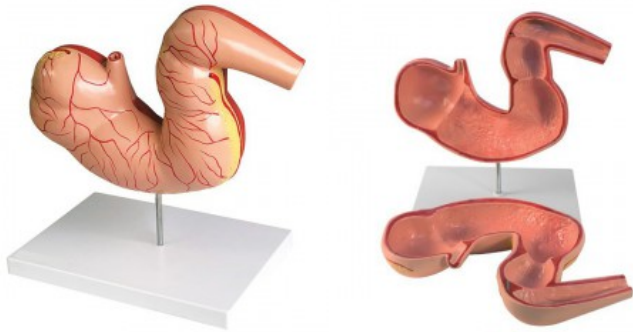




Horse stomach model, 2 parts

Price inquiry: +48 605999769, kontakt@openmedis.pl

Product code: MZ01888



A realistic model of a horse's stomach. It is divided into two parts, each of which represents the internal and external structures of the horse's stomach structure.

Specification:

- Dimensions: approx. 48x23x36cm
- Weight: approx. 1.6-2kg

Equine GI Tract

Price inquiry: +48 605999769, kontakt@openmedis.pl

Product code: M01683



A realistic model imitating the horse's gastrointestinal tract. Anatomically correct.

The model consists of 5 pumped components (Each component above is divided into batches separately to allow individual sections to be blown).

- left and right ventral colon,
- left and right dorsal colon
- cecum

Additional information:

- In addition, a 3-part stretch of inflatable small intestine is attached to the model.
- Made of materials imitating natural tissues

Equine Dystocia Simulator

Price inquiry: +48 605999769, kontakt@openmedis.pl

Product code: MZ04022



The advanced, multifunctional, full size **mare birth simulator** (dystocia - severe childbirth) with the possibility of learning and training in nasogastric intubation, intravenous injections on the cervical vessels and intramuscular injections. **The veterinary simulator** is modeled on a typical Quarter Horse mare. Horses of this breed are characterized by a square, muscular figure and a short, wedge-shaped head - tapering wedge-shaped towards the bottom. The structure of the **mare anatomical model** is reinforced with epoxy steel/fiberglass and has a waterproof coating for easy cleaning.

Mare Veterinary Simulator Specification:

- Modeled as a standard 15 hand Quarter Horse
- Steel reinforced epoxy/fibreglass construction with water resistant components for ease of cleaning
- 1.36m at the shoulder and 2.44m from nose to tail. Widest point is 0.8m
- Inflatable foal air bed support system
- Clear vinyl uterine bag
- Soft durable birthing perineum panel
- Replica pelvis
- Padded fetal extractor, obstetric chain, head snare and landing mat
- Comes standard in brown
- Custom markings available upon request

Dystocia Training: Students will gain confidence and develop familiarity with foal positioning and palpation. 34kg (75lbs) birthing foal size

- Rectal palpation • Durable, flexible and easy to clean skin
- Compatible with the equine uterus set for artificial insemination training upgrade kit and palpation of multi stage ovaries
- Realistic in size and aesthetically pleasing

Module of nasogastric intubation and jugular vein injections and intramuscular injections:

- The module can be ordered and used as a separate simulation unit without the delivery panel.
- IV injection place with palpable veins that can withstand repeated punctures (20 or 22 gauge needle - recommended for simulation)
- Easily replaceable, durable latex venous tubing suitable for multiple punctures: set includes 5 sets of veins



- The mechanical system of increasing pressure allows for obtaining appropriate tension of the vessel in order to collect blood
- Durable, easy to remove, washable, replaceable skin with mane
- The place enabling intramuscular injections is adapted to multiple punctures and to accept injections with liquids
- Rolling Stand, adjustable for height, rostral tilt, and 90 degree rotation

REPLACEABLE PARTS:

- Birthing Perineum Panel
- Palpation Panel and Equine Uterus Set
- Standard Tail
- Uterine Bag
- Foal
- Veins
- Blood
- Neck Hide

UPGRADEABLE PARTS:

- Artificial Insemination techniques can be practiced with the purchase of the Palpation Panel With Equine Theriogenology Uterus Set. Equine uterus set includes interchangeable ovaries.

The animal models and veterinary simulators in the OpenMedis offer?

The **simulation in veterinary** medicine is a dynamically developing field of education. OpenMedis is a manufacturer and distributor of advanced **veterinary simulators** and **animal anatomical models**, which are ideal equipment for a veterinary laboratory (skills lab - clinical skills). The **veterinary simulators** enable the acquisition of practical skills in various procedures performed on real animals. The use of **veterinary simulators, animal trainers, anatomical models** and **animal phantoms** in the teaching process reduces the distance between theory and practice and reduces students' stress related to carrying out a given procedure on a living organism. The **animal simulators** are the future of veterinary medicine. Thanks to **veterinary simulators**, it is possible to train specific practical skills before going to work with real animals, which also increases the comfort of patients themselves and contributes to maintaining animal welfare. Our offer includes, among others, procedural **veterinary phantoms**, such as a **simulator for cattle insemination**, a **trainer for learning pig insemination**, a **cow dystocia simulator** or a **horse colic model**. Our offer also includes **animal models** for learning anatomy, e.g. a 15-piece cow model, a 16-piece mare model or a pig model made of 20 parts. In addition to farm animal simulators, our assortment also includes models and phantoms of pets, enabling e.g. training in CPR or injections in dogs and cats. Another modern solution is a **virtual platform for learning veterinary anatomy**, which will work well in any teaching facility (such as the University of Life Sciences) as equipment for a veterinary and zootechnical laboratory.

Equine Nasogastric and Venipuncture with IM Injection veterinary simulator

Price inquiry: +48 605999769, kontakt@openmedis.pl

Product code: MZ04040



The advanced, multi-purpose **horse head trainer** for learning and training intubation and performing intravenous and intramuscular injections. **The horse phantom** is delivered with an ergonomic tripod on wheels used to suspend the head of a **horse model** at the appropriate height. This practical **veterinary simulator** is made of realistic materials that faithfully reflect the appearance of a real horse. The internal structure of the presented **horse head trainer** has been constructed in a way that enables learning and training in the so-called conditions as much as possible high fidelity. **The horse head phantom** is intended to facilitate and accelerate learning and acquire practical clinical skills such as intubation of horses and intramuscular and intravenous injections. This reduces the stress of future veterinarians and technicians, as well as the animals themselves, related to performing the indicated activities on a living organism.

Technical specification:

- The metal Rolling Stand
- Durable Silicone with metal armature
- Removable head for ease of transportation, and replacement of components
- Removable/washable hide covering. Can be replaced when worn
- Comes with 5 sets of replacement veins

Product features:

- Replica nasal passageway that simulates anatomical structure while students practice passing the intubation tube via the esophagus
- Well rendered internal anatomy will allow the student to confirm tube placement in the esophagus via a visual reference site on the left side of the neck. Students can then continue to pass the tube into the stomach chamber
- Smell and or suction test can be performed to indicate proper placement of the tube in the stomach chamber
- Lavage technique and administration of fluids can be simulated
- Jugular venipuncture with palpable veins (20-22) gauge needle is recommended for simulation).
- Easily replaceable latex vein tubing that can endure multiple punctures for simulation purposes
- Mechanical vein pressurizing system allows for positive pressure for blood draw (20-22) gauge needle recommended for simulation).
- Intramuscular site that can endure multiple punctures and accept fluid injections
- Soft silicone head with flexible ears and well rendered anatomy enables students to locate facial injection sites.
- **The Head model** also accepts bit & bridle Rolling stand, adjustable for height, rostral tilt and 90 degree

rotation

Replaceable parts:

- Veins
- Intramuscular Pads
- Mane
- Hide Covering
- Blood
- Blood Bag
- Stomach Chamber

The application of horse veterinary simulators

The veterinary simulators available in our offer have been designed to enable realistic training and education in high-fidelity conditions. They are ideal as equipment for clinical skills laboratories or veterinary and zootechnical laboratories. The presented **horse head veterinary phantom** allows you to improve and develop the following skills:

- performing intubation
- learning the anatomy head region and locating characteristic landmarks
- performing venopuncture learning and training in intramuscular injections
- learning and training in collecting blood from the jugular veins
- gastric lavage and administration of fluids putting on

We offer various **horse models** and **animal phantoms** for advanced training in the field of veterinary medicine. Our **animal anatomical models** allow you to learn the topographic anatomy of organs and the relationships between them, e.g. the **mare model**. It is worth pointing out that some of our products are **advanced veterinary simulators** enabling demonstration of colic in horses, education in the field of sea diseases, mare dystocia or rectal examination (mare theriogenological model). Our dystocia foal model is perfect for educating how to deal with a newborn foal and for explaining issues related to mare's perinatal care.

Dystocia Foal Model

Price inquiry: +48 605999769, kontakt@openmedis.pl

Product code: MZ04038



The full-size, realistic **veterinary model** of a dystocia foal. This **veterinary trainer** enables practical learning how to deal with a newborn foal. **Product features:**

- Fully articulated steel skeleton, with ribcage, vertebrae, pelvis and spine
- Realistic movement; durable and flexible skin and tail
- Skull with jaw, teeth, soft palate
- Esophagus for intubation and palpable anus
- Reinforced ears and forelegs with durable hooves for chaining
- Realistic 34.1kg (75 lb) weight
- Standard brown
- Custom colours and marking available at an additional cost upon request
- Foal Bag for storage and transportation

Equine Neck Venipuncture and Intramuscular Injection

Price inquiry: +48 605999769, kontakt@openmedis.pl

Product code: VSI12



This advanced and realistic head simulator of equine on a tripod, designed for training and improving the skills of venipuncture and intramuscular injections.

Main features:

- Jugular venipuncture with palpable veins
- Easily replaceable latex vein tubing that can endure multiple punctures; includes 5 sets of veins
- Mechanical system allows the veins to be pressurized
- Long lasting, easily removable, washable, replaceable hide covering with mane
- IM site that can endure multiple punctures and accept fluid injections
- Soft silicone head with flexible ears and well rendered anatomy illustrates facial injection sites and accepts a bridle
- Rolling Stand, adjustable for height, rostral tilt, and 90 degree rotation

Replaceable Parts

- Veins
- Intramuscular Pads
- Mane
- Hide Covering

Equine Nerve Block Trainer

Price inquiry: +48 605999769, kontakt@openmedis.pl

Product code: MZ02554



The trainer in the form of a horse's limb is intended for learning how to perform peripheral nerve blocks with feedback informing about the correctness of the procedure performed. The model has realistic nerve palpation sensation and needle resistance.

Veterinary simulator - Bovine Venipuncture and Epidural Tail Model

Price inquiry: +48 605999769, kontakt@openmedis.pl

Product code: MZ04042



A realistic **veterinary simulator** allowing you to learn and improve your skills in performing tail vein puncture and epidural anesthesia in cattle. This **veterinary trainer** in the form of a **bovine tail** offers realistic sensations during venopuncturing and epidural procedures on cows. The **cow tail model** for injection, made of durable silicone, can be easily attached to advanced veterinary simulators, e.g. Hereford or Holstein dystocia, as well as to **theriogenological simulators**. The presented **veterinary trainer** contains palpable bones to increase realism. Thanks to a dedicated stand, it can be placed on a table at the appropriate height, making the training even more realistic and ergonomic. The device is ideal for **equipping a veterinary skills laboratory** for students and future veterinary technicians. **The bovine tail model** is available in two versions: brown or black. Set contains:

- realistic model of a bovine tail, fully movable
- stand
- artificial blood bag
- a tube simulating the tail vein
- a tube simulating epidural puncture place

The above components are also available as spare parts for this **veterinary simulator**.

Equine Palpation/ Colic Simulator with Equine Neck Venipuncture and Intramuscular Injection

Price inquiry: +48 605999769, kontakt@openmedis.pl

Product code: M01691



A realistic palpation horse simulator in natural size. It allows performing venipuncture and intramuscular injection. The simulator comes equipped with inflating latex intestines to familiarize students with the symptoms of colic and abdominal pain.

Horse Body Features

- Modeled as a standard 15 hand Quarter Horse
- Steel reinforced epoxy/fibreglass construction with water resistant components for ease of cleaning
- 1.5m at the shoulder and 2.25m from nose to tail. Widest point is 0.6m
- 5 section inflatable latex GI Tract. Right and left ventral colon, right and left dorsal colon, and cecum. 3m section of small intestine with mount
- Spleen and left kidney attached with the renosplenic ligament. Palpable aorta capable of simulating a pulse
- Palpable soft uterus with cervix, urethra and broad ligament
- 3 sets of interchangeable ovaries; anestrus, estrus, and estrus with follicle
- Abdominocentesis function with replaceable pad; fluid reservoir and palpable linea
- Comes standard in black(Custom breed / paint available for an additional cost)
- Artificial, removable tail
- Soft, durable perineum panel
- Replica polyurethane pelvis
- Inflatable vinyl rectum
- Recycled plastic base

The Equine Neck Venipuncture/IM Injection is removable from the horse body and may be used as a stand alone unit. Can be purchased separately.

Features include:

- Jugular venipuncture with palpable veins
- Easily replaceable latex vein tubing that can endure multiple punctures; includes 5 sets of veins
- Mechanical system allows the veins to be pressurized
- Long lasting, easily removable, washable, replaceable hide covering with mane
- IM site that can endure multiple punctures and accept fluid injections
- Soft silicone head with flexible ears and well rendered anatomy illustrates facial injection sites and accepts a bridle



- Rolling Stand, adjustable for height, rostral tilt, and 90 degree rotation

Replaceable Parts

- Veins
- Intramuscular Pads
- Mane
- Hide Covering
- Abdominocentesis pad
- GI Tract
- Perineum Panel with Equine Uterus
- Ovaries
- Spleen
- Kidney
- Aorta

Advanced Equine Simulator

Price inquiry: +48 605999769, kontakt@openmedis.pl

Product code: M01382



The Advanced Equine Simulator (in black) is the leading and most comprehensive equine simulator available. It has been designed to advance a comprehensive set of educational goals for the following procedures:

- Intramuscular Injections
- Nasolacrimal Duct Flush
- Placement of Subpalpebral Lavage System
- Eye Nerve Blocks – Auriculopalpebral Nerve & Supraorbital Nerve
- Teeth Nerve Blocks – Mental Nerve, Maxillary Nerve & Infraorbital Nerve
- Blood draw from jugular
- Jugular catheter insertion
- Blood draw from deep facial artery
- Blood draw from transverse facial vein
- Transverse facial artery catheter insertion

Repetitive use of this product will help students develop the procedural skills and confidence necessary before their first live animal experience. Ships with initial supply of artificial blood powder and 1000 ml IV bag. Designed by equine surgeon educators using innovative technologies, the Advanced Equine Simulator is engineered to provide the most anatomically correct and realistic simulated equine training experience available. The Advanced Equine Simulator delivers excellence in veterinary training.